

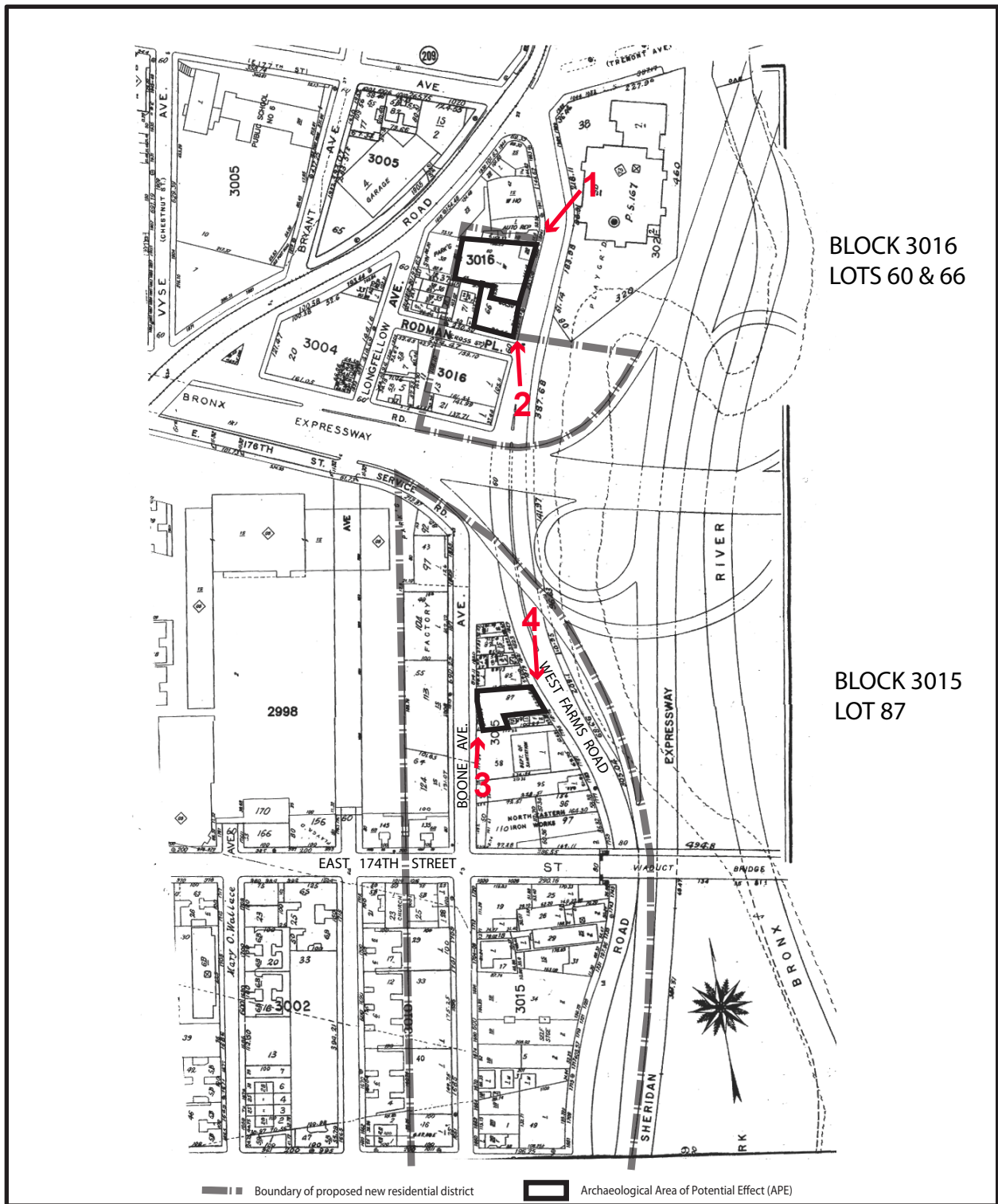
BASE MAP: U.S.G.S. Topographic Map: Central Park and Flushing, NY Quadrangles, 1979.

# ARCHAEOLOGICAL DOCUMENTARY STUDY CROTONA PARK EAST PROPOSED REZONING BRONX, NEW YORK

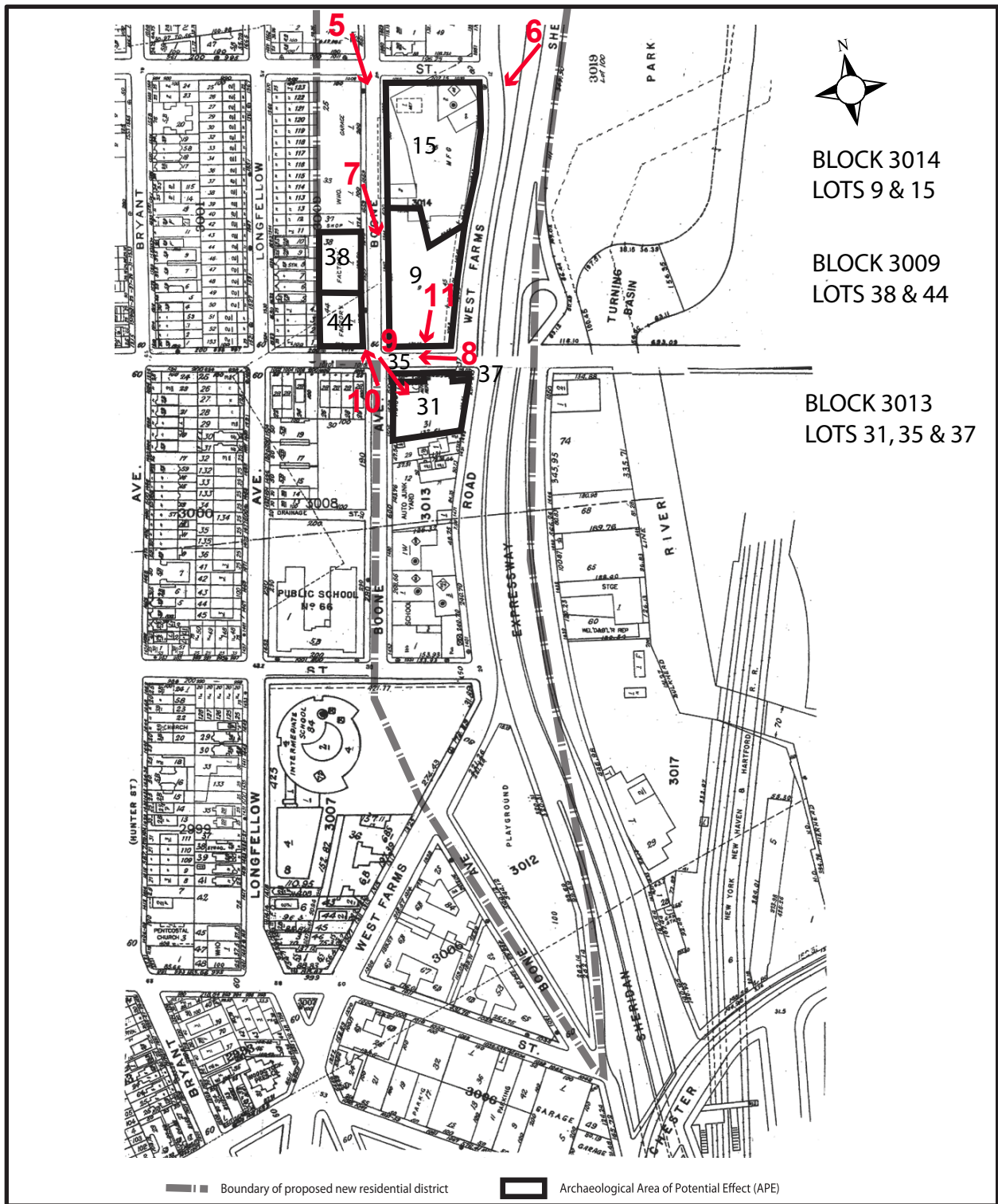
FIGURE 1: PROJECT SITE LOCATION ALL APE BLOCKS.











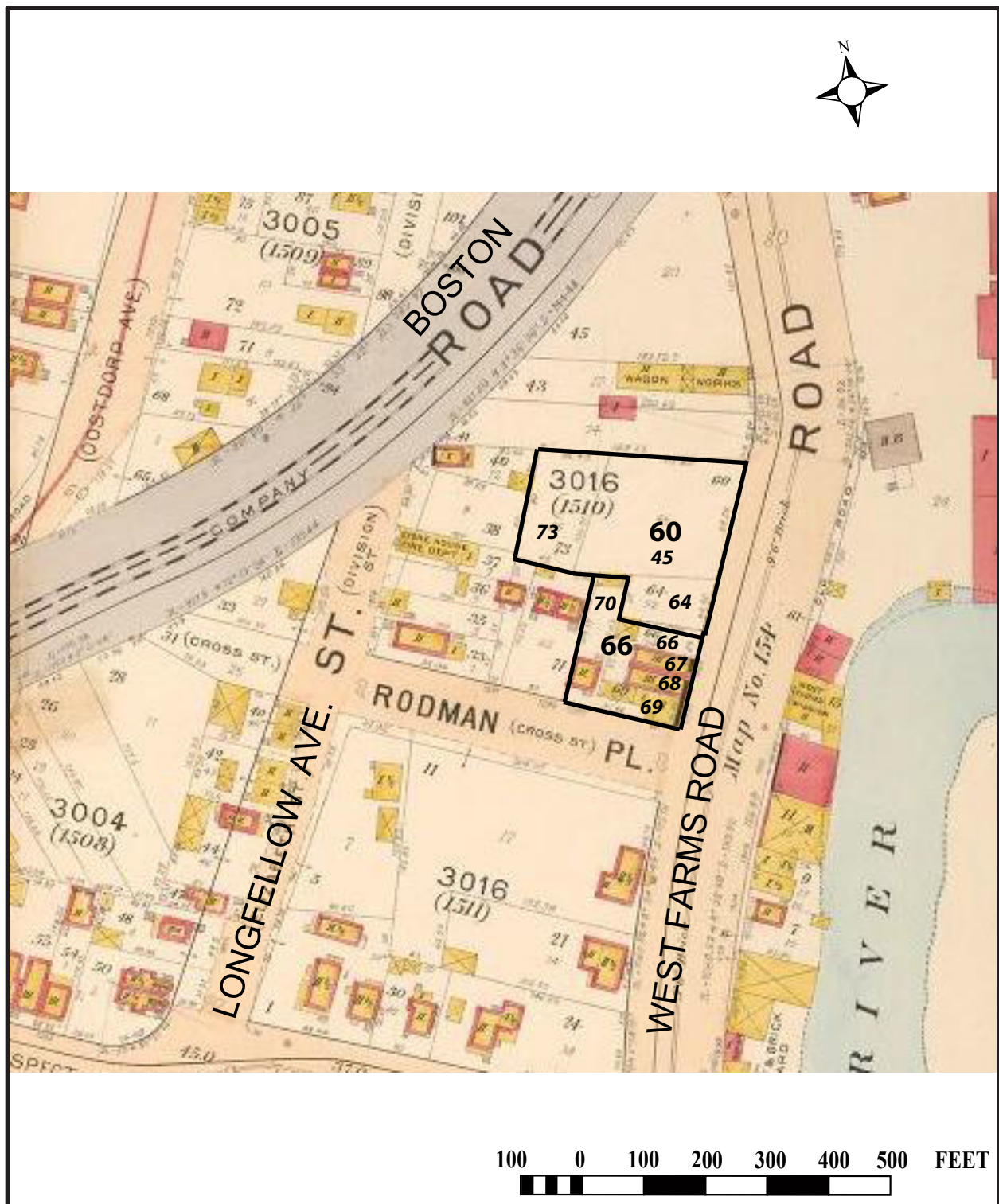
BASE MAP: Insurance Maps of New York. Sanborn Map Company, New York. Provided by Stantec.

# ARCHAEOLOGICAL DOCUMENTARY STUDY CROTONA PARK EAST PROPOSED REZONING BRONX, NEW YORK

FIGURE 3: PROJECT SITE LOCATION BLOCKS 3009, 3013, AND 3014  
 AND LOCATIONS OF PHOTOGRAPHS, IN RED.







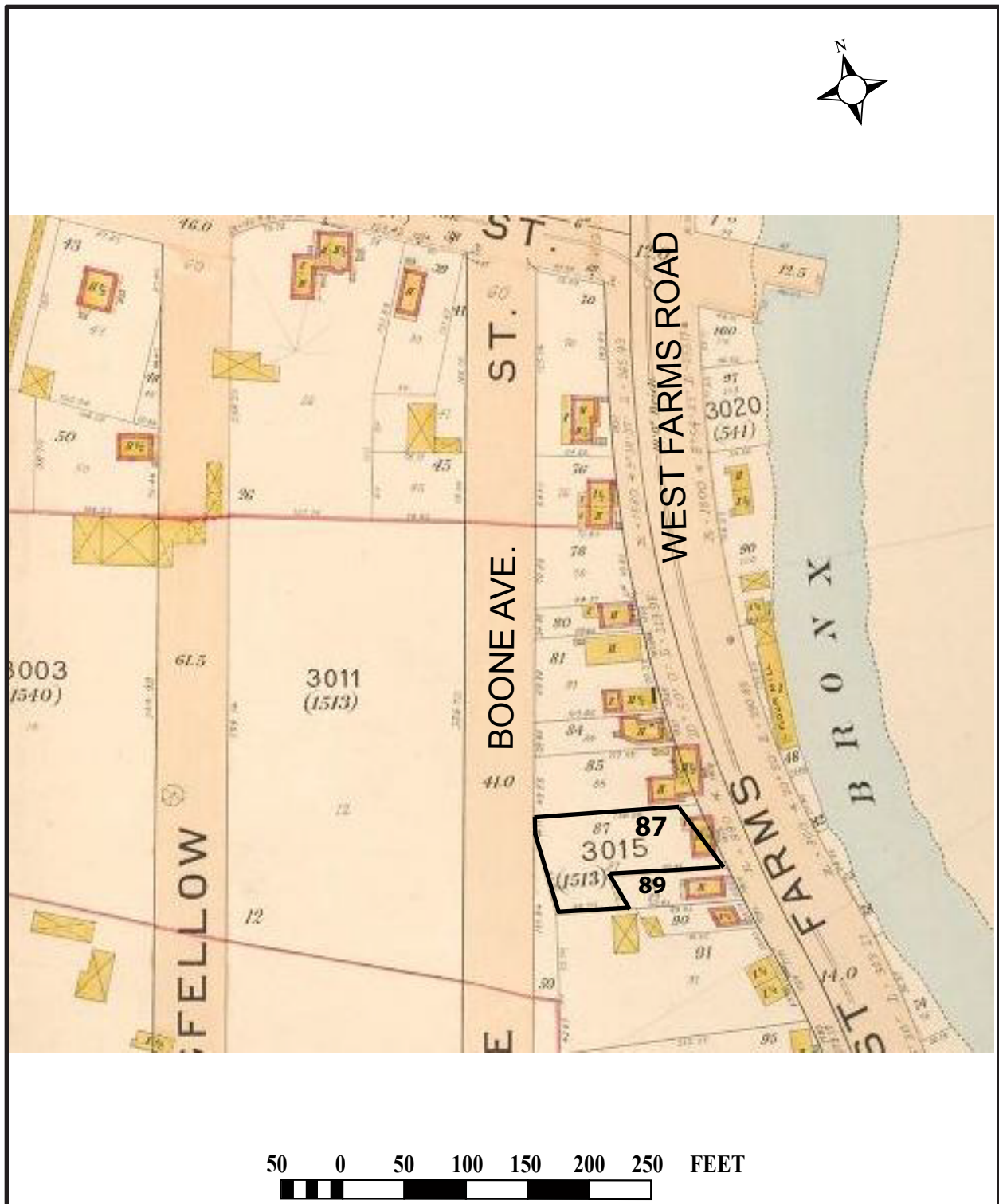
BASE MAP: *Atlas of the Borough of the Bronx, City of New York*. E. Belcher Hyde Map Company, New York.

ARCHAEOLOGICAL DOCUMENTARY STUDY  
CROTONA PARK EAST PROPOSED REZONING  
BRONX, NEW YORK

FIGURE 4: PROJECT SITE LOCATION BLOCK 3016 IN 1901.  
Note: historical lot numbers are shown in italics.







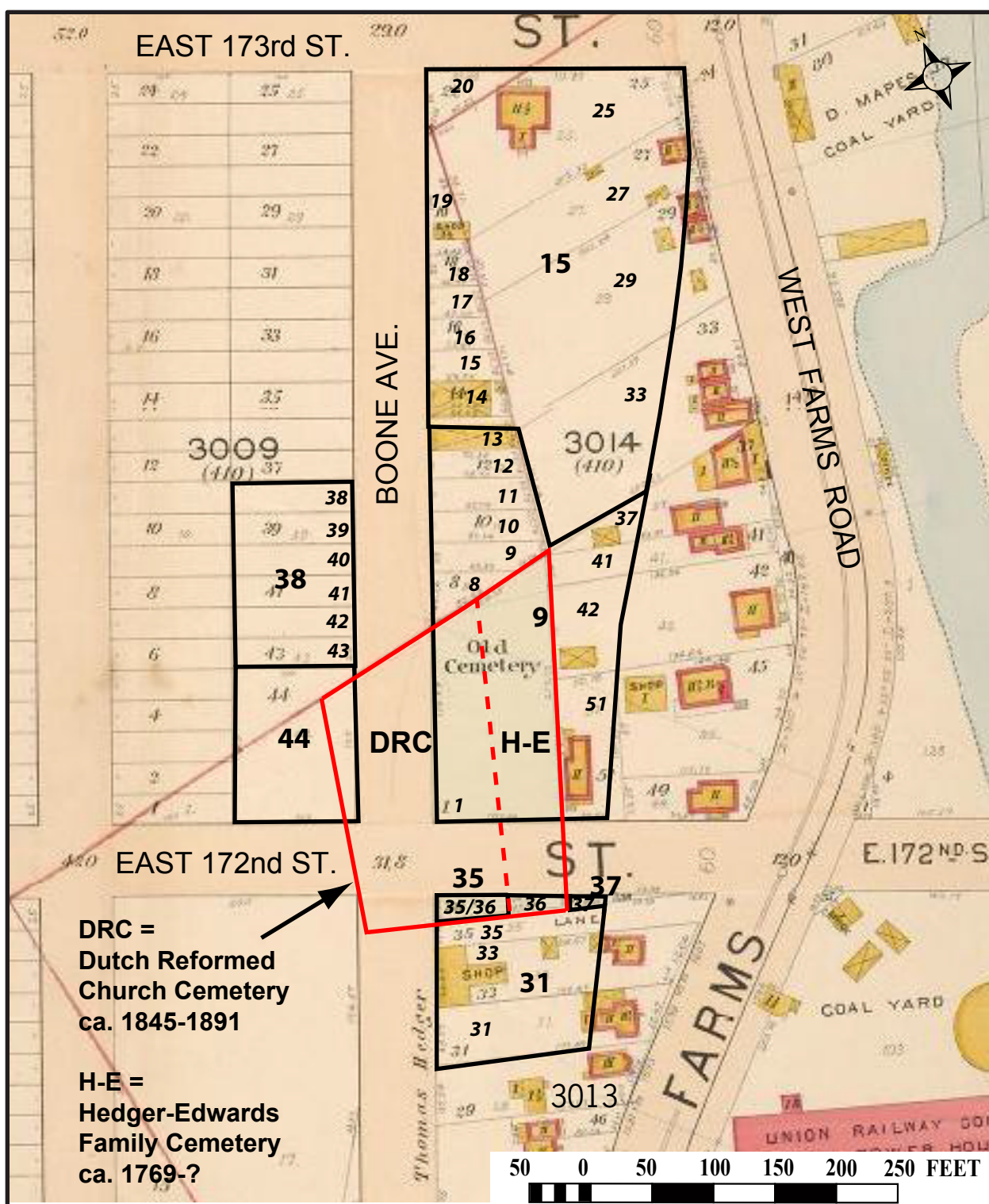
BASE MAP: *Atlas of the Borough of the Bronx, City of New York*. E. Belcher Hyde Map Company, New York.

ARCHAEOLOGICAL DOCUMENTARY STUDY  
CROTONA PARK EAST PROPOSED REZONING  
BRONX, NEW YORK

FIGURE 5: PROJECT SITE LOCATION BLOCK 3015 IN 1901.







BASE MAP: *Atlas of the Borough of the Bronx, City of New York*. E. Belcher Hyde Map Company, New York.

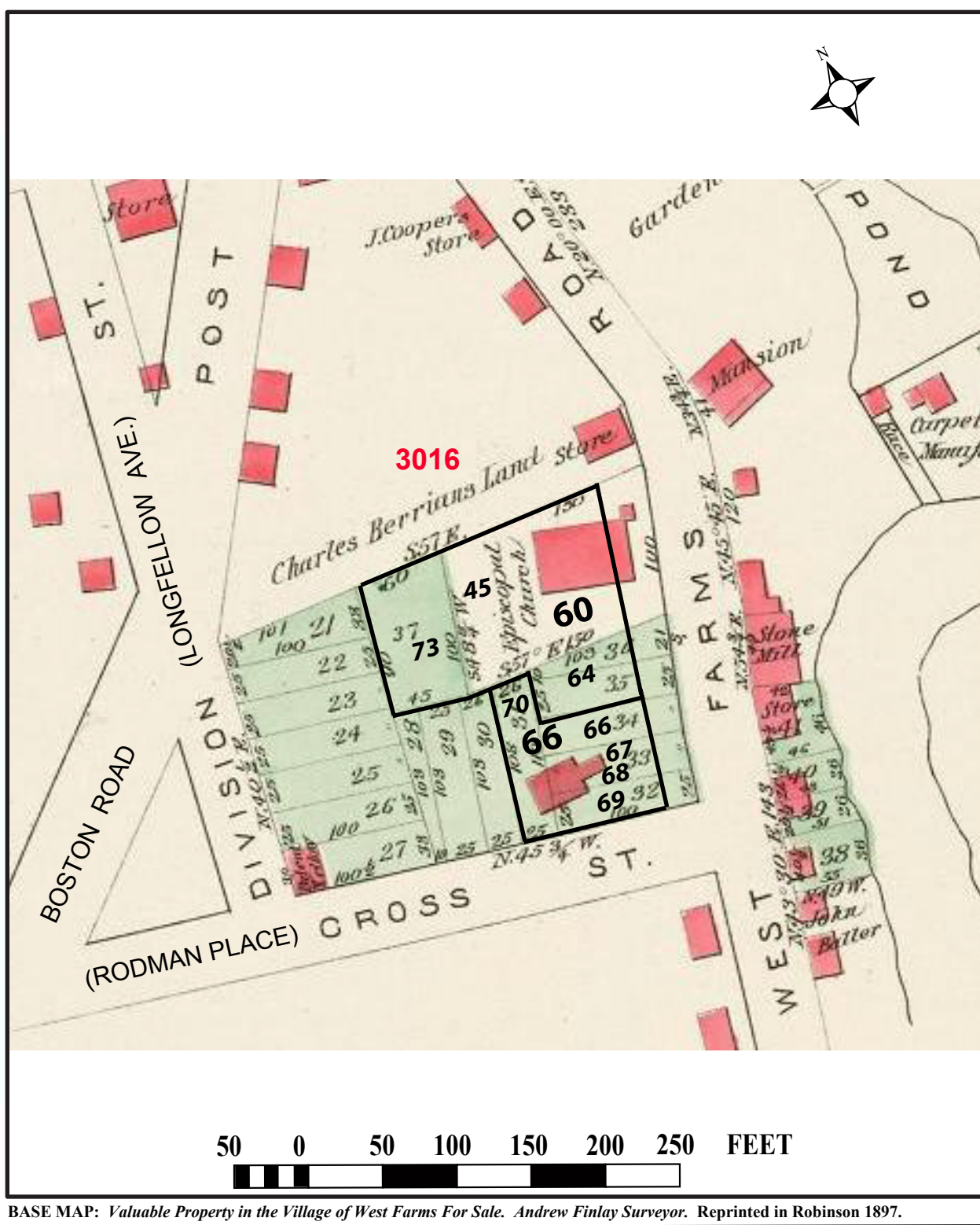
ARCHAEOLOGICAL DOCUMENTARY STUDY  
CROTONA PARK EAST PROPOSED REZONING  
BRONX, NEW YORK



FIGURE 6: PROJECT SITE LOCATION BLOCKS 3009, 3013, AND 3014 IN 1901.

Note: Historical lot numbers are shown in italics and red lines demarcate cemetery boundaries.



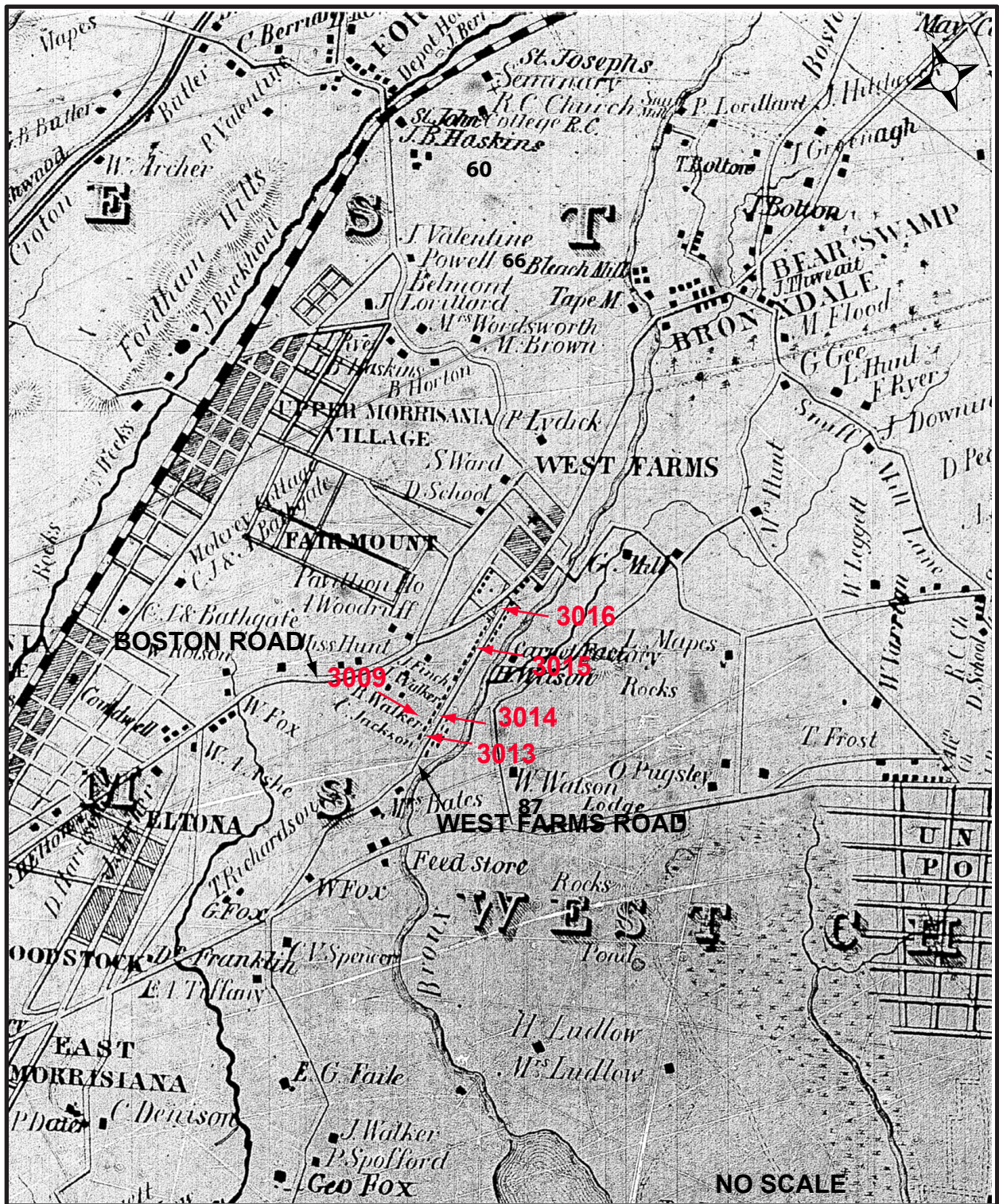


ARCHAEOLOGICAL DOCUMENTARY STUDY  
CROTONA PARK EAST PROPOSED REZONING  
BRONX, NEW YORK

FIGURE 7: PROJECT SITE LOCATION BLOCK 3016 IN 1847.  
Note: historical lot numbers are shown in italics.







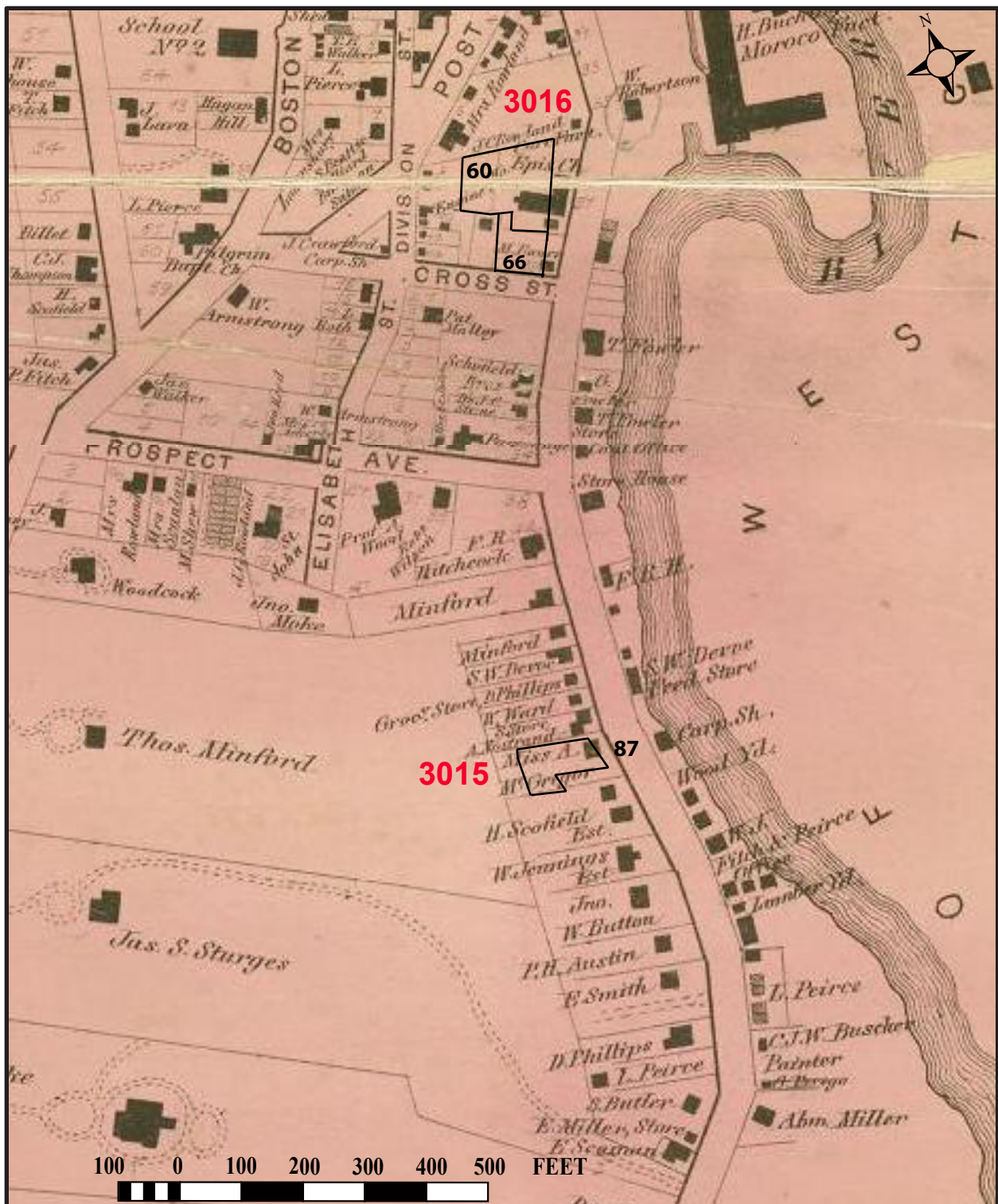
BASE MAP: Map of Westchester County, New York. Sidney and Neff, White Plains, New York.

ARCHAEOLOGICAL DOCUMENTARY STUDY  
CROTONA PARK EAST PROPOSED REZONING  
BRONX, NEW YORK

FIGURE 8: PROJECT SITE LOCATION ALL BLOCKS IN 1851.







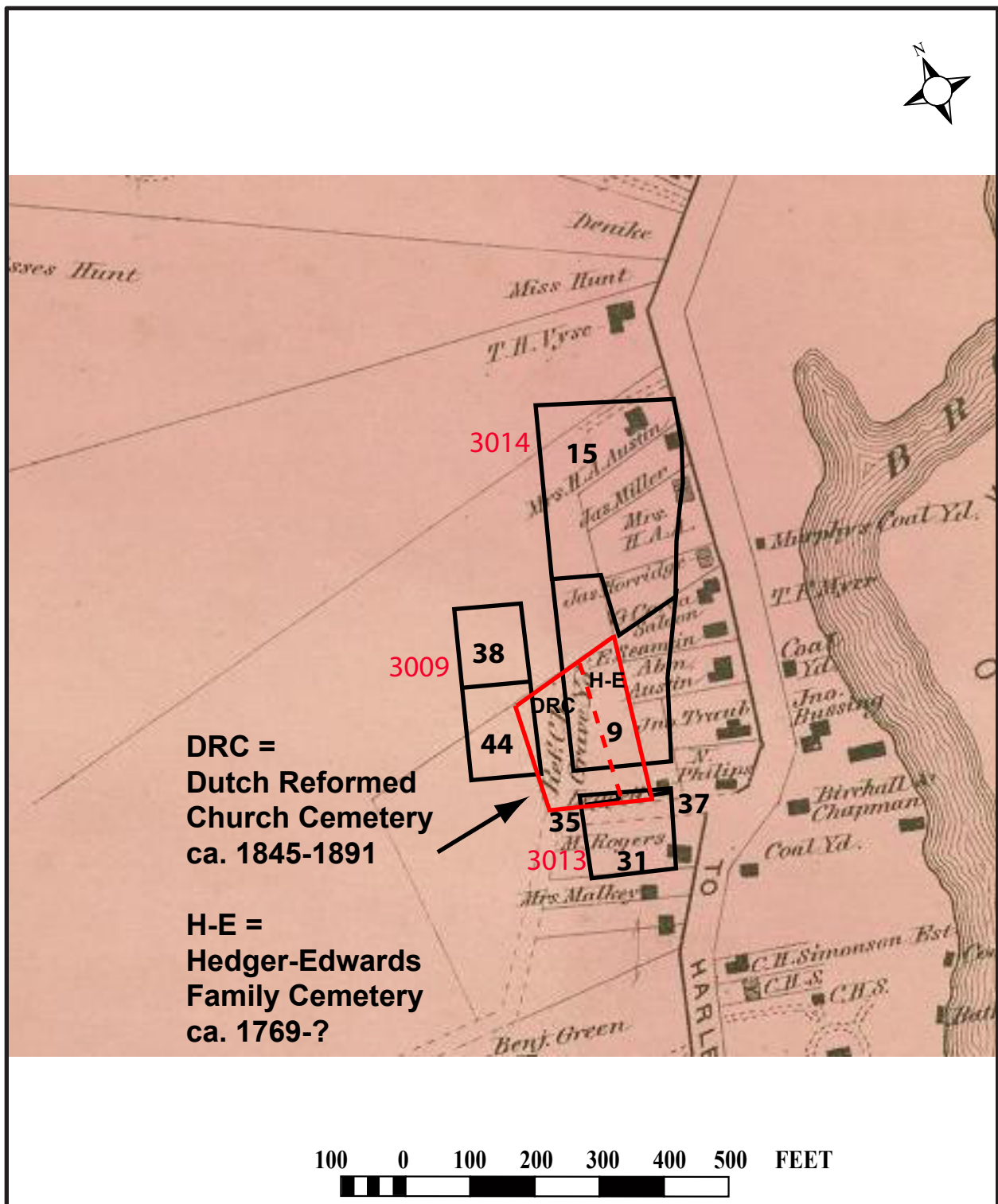
BASE MAP: *Atlas of Westchester County*. F. W. Beers and Company, New York.

ARCHAEOLOGICAL DOCUMENTARY STUDY  
CROTONA PARK EAST PROPOSED REZONING  
BRONX, NEW YORK

FIGURE 9: PROJECT SITE LOCATION BLOCKS 3015 AND 3016 IN 1868.



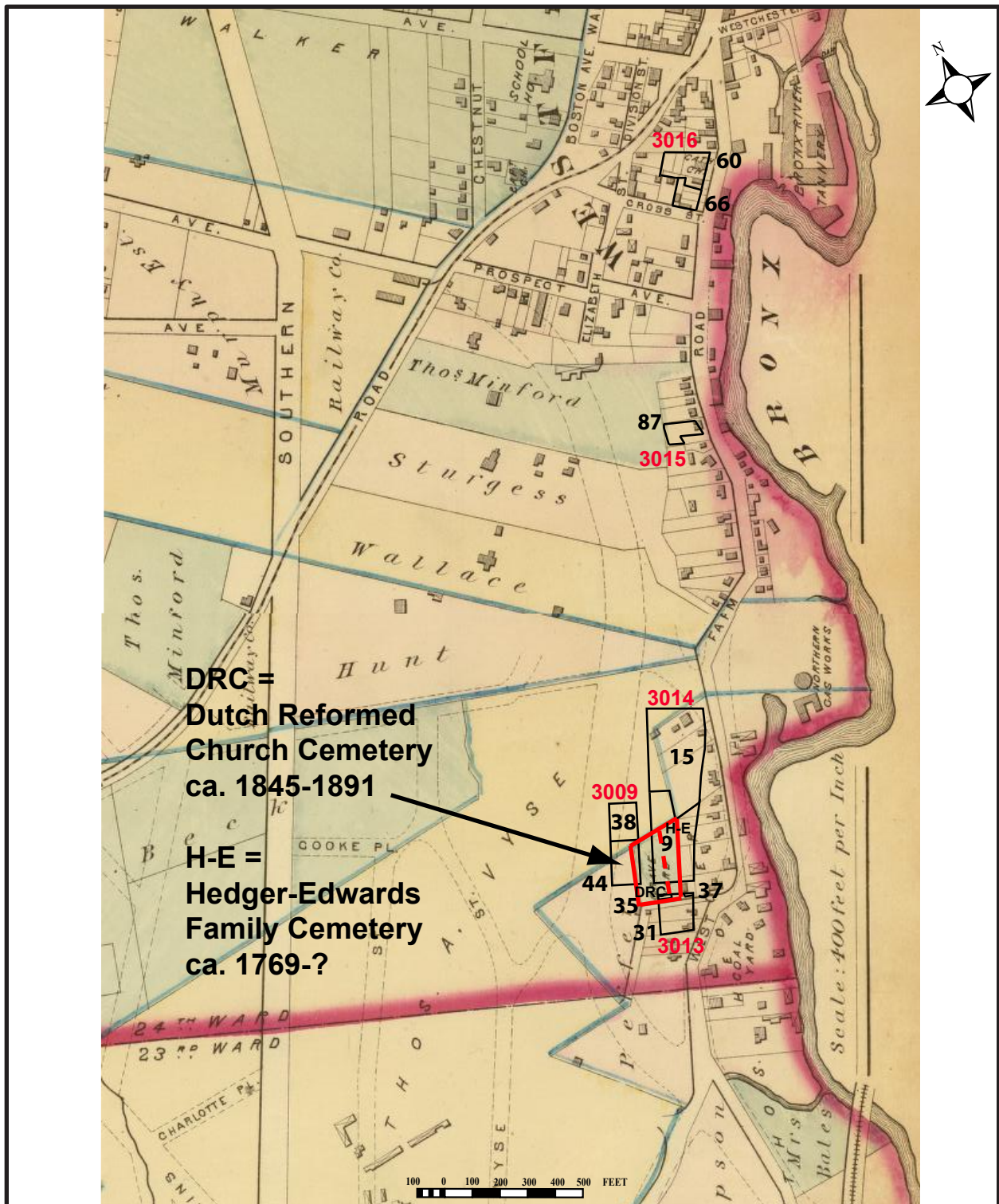




ARCHAEOLOGICAL DOCUMENTARY STUDY  
CROTONA PARK EAST PROPOSED REZONING  
BRONX, NEW YORK

FIGURE 10: PROJECT SITE LOCATION BLOCKS 3009, 3013, AND 3014 IN 1868.





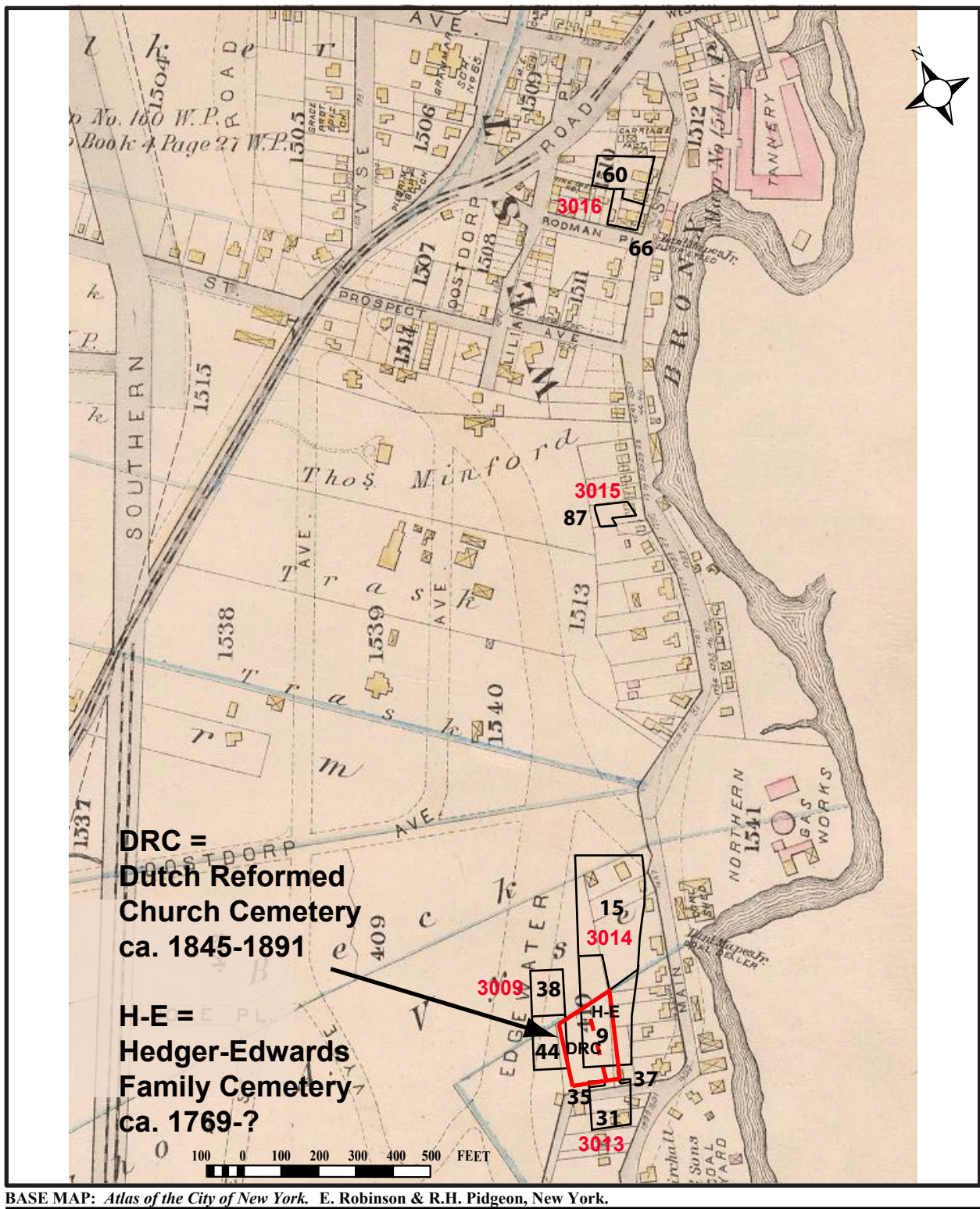
ARCHAEOLOGICAL DOCUMENTARY STUDY  
CROTONA PARK EAST PROPOSED REZONING  
BRONX, NEW YORK

FIGURE 11: PROJECT SITE LOCATION ALL APE BLOCKS IN 1879.

Note: Red lines demarcate mapped boundaries of cemeteries.







ARCHAEOLOGICAL DOCUMENTARY STUDY  
CROTONA PARK EAST PROPOSED REZONING  
BRONX, NEW YORK

FIGURE 12: PROJECT SITE LOCATION, ALL APE BLOCKS IN 1885.  
Note: Red lines demarcate mapped boundaries of cemeteries.

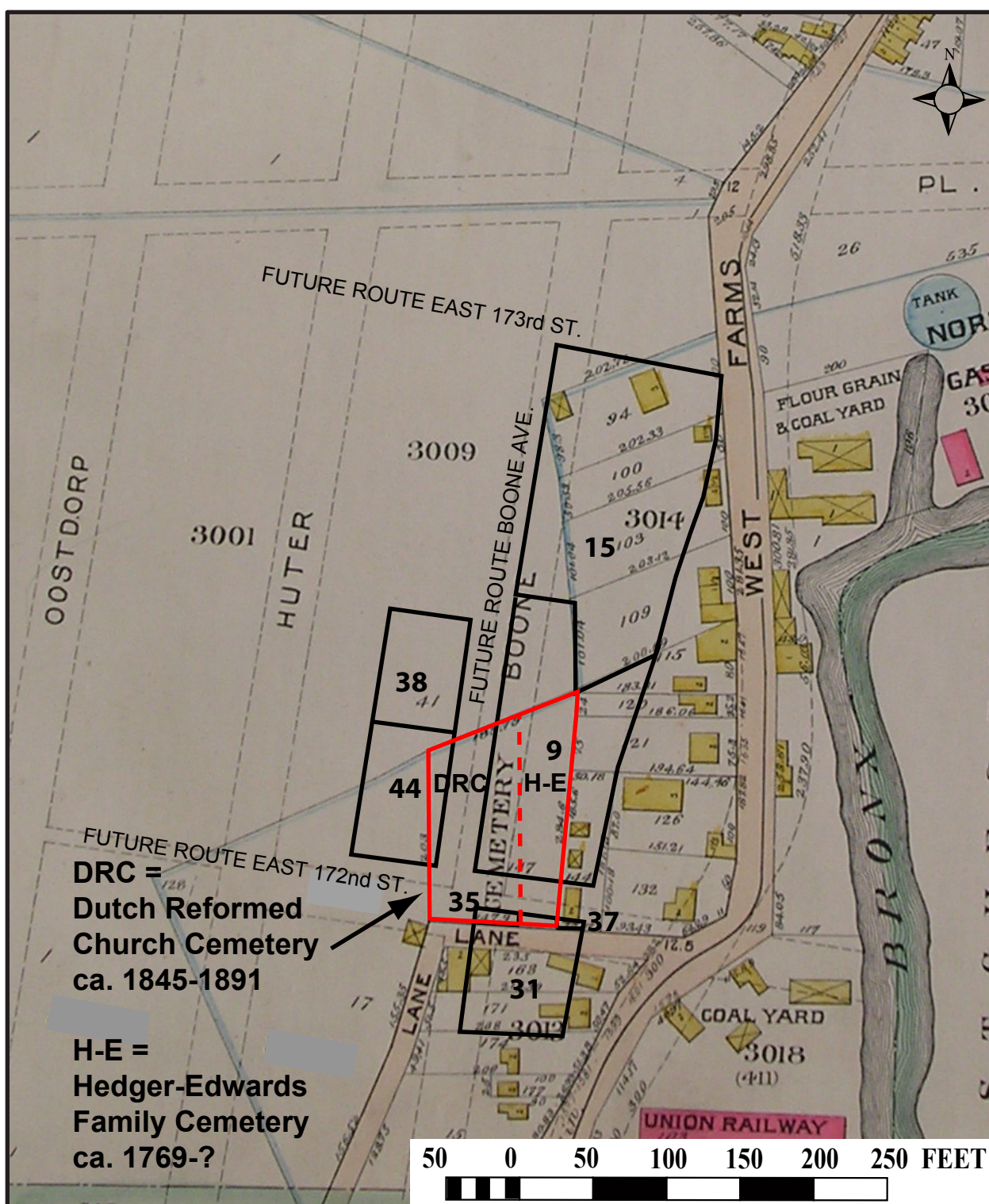












BASE MAP: *Atlas of the City of New York, 23rd and 24th Wards*. G. W. Bromley and Company, Philadelphia.

ARCHAEOLOGICAL DOCUMENTARY STUDY  
CROTONA PARK EAST PROPOSED REZONING  
BRONX, NEW YORK

FIGURE 15: PROJECT SITE LOCATION BLOCKS 3009, 3013, AND 3014 IN 1893.

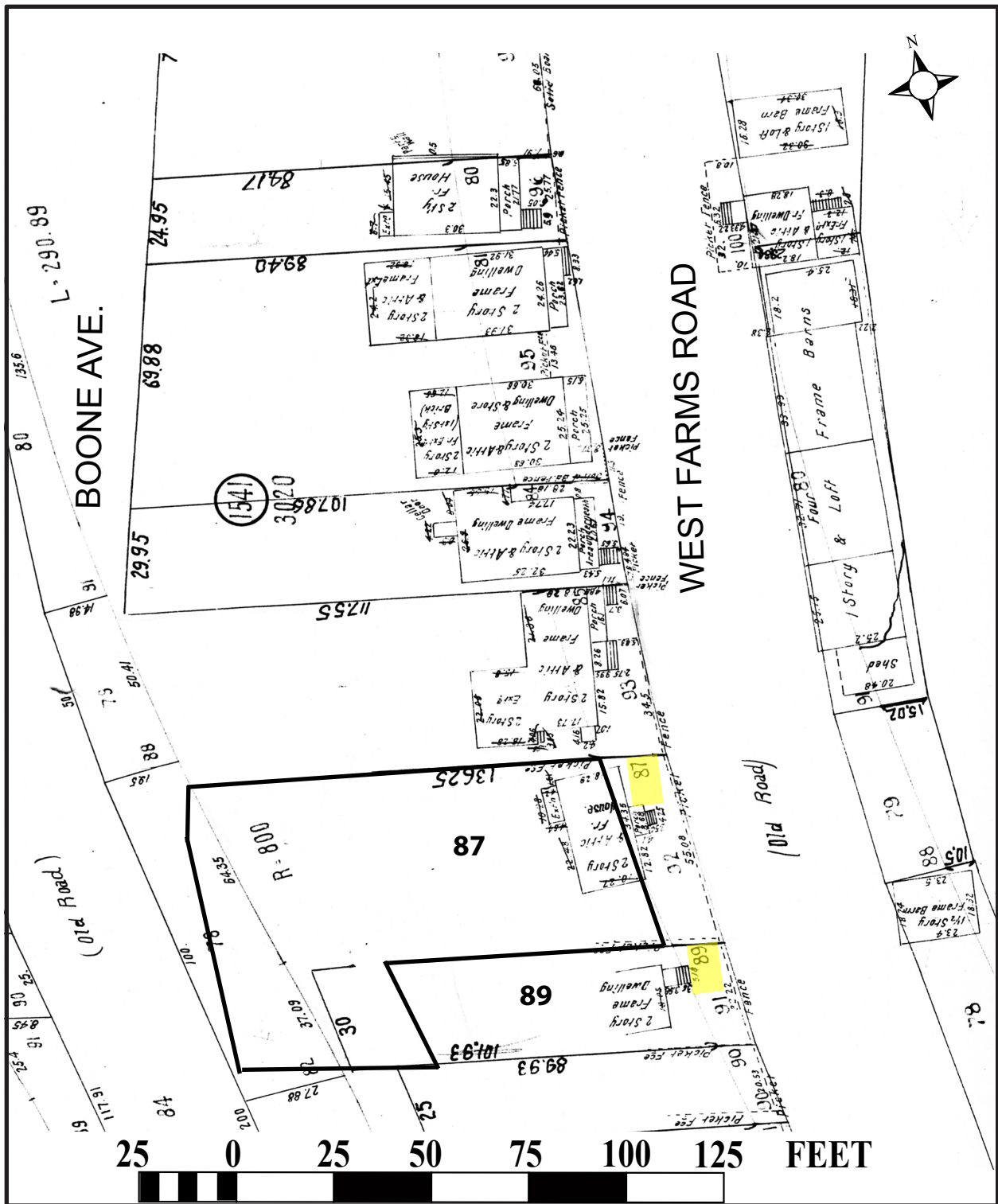
Note: Red lines demarcate mapped boundaries of cemeteries.

The illustrated blocks/streets placements are "as proposed" in 1893; when they were laid out in subsequent years, the actual placement did vary.









BASE MAP: Draft Damage Map, Section B, West Farms Road. Topographical Bureau, City of New York.

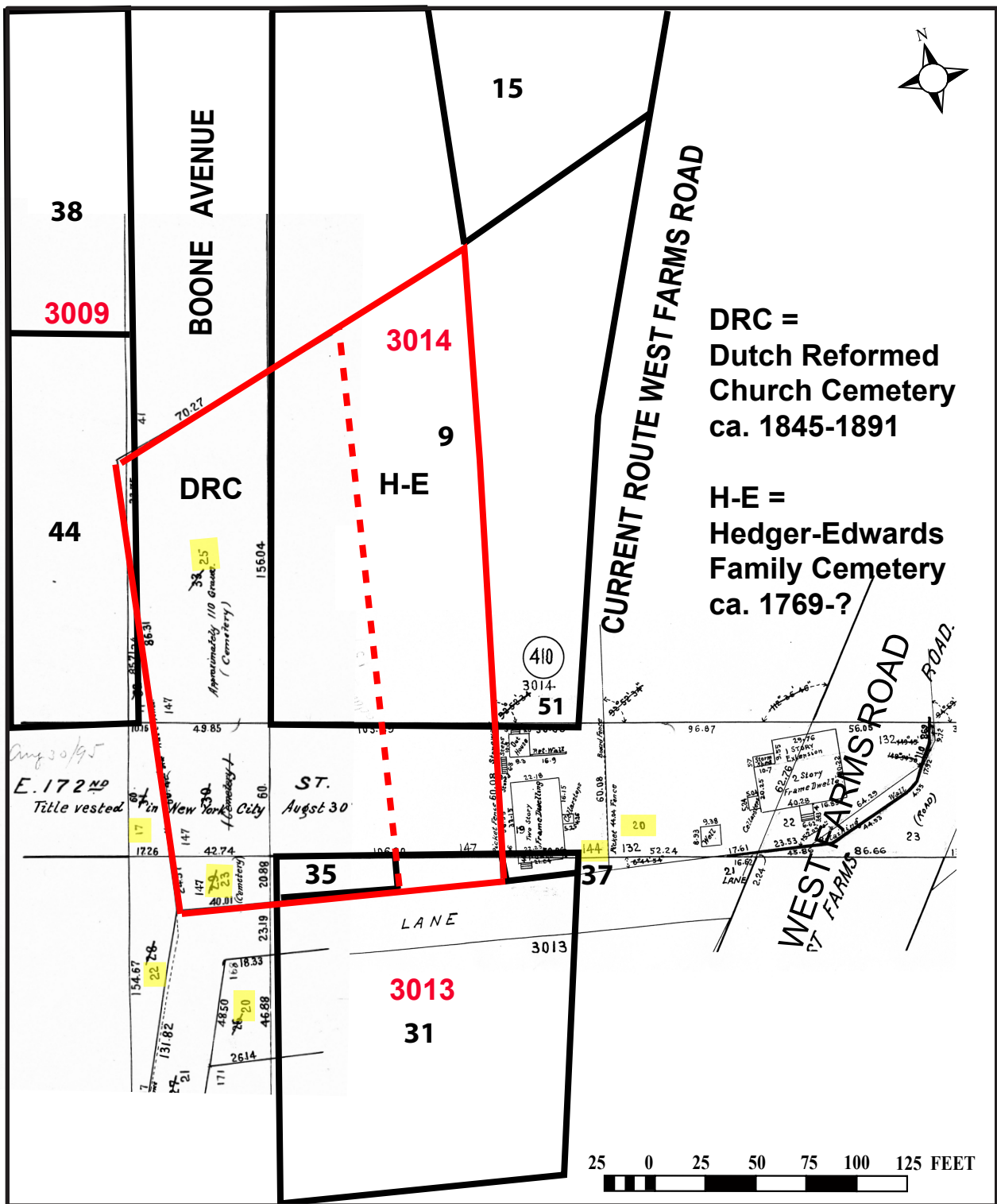
ARCHAEOLOGICAL DOCUMENTARY STUDY  
CROTONA PARK EAST PROPOSED REZONING  
BRONX, NEW YORK

FIGURE 17: PROJECT SITE LOCATION BLOCK 3015 IN 1896.

Note: Lot numbers assigned for inventory purposes prior to the widening of West Farms Road are highlighted in yellow.







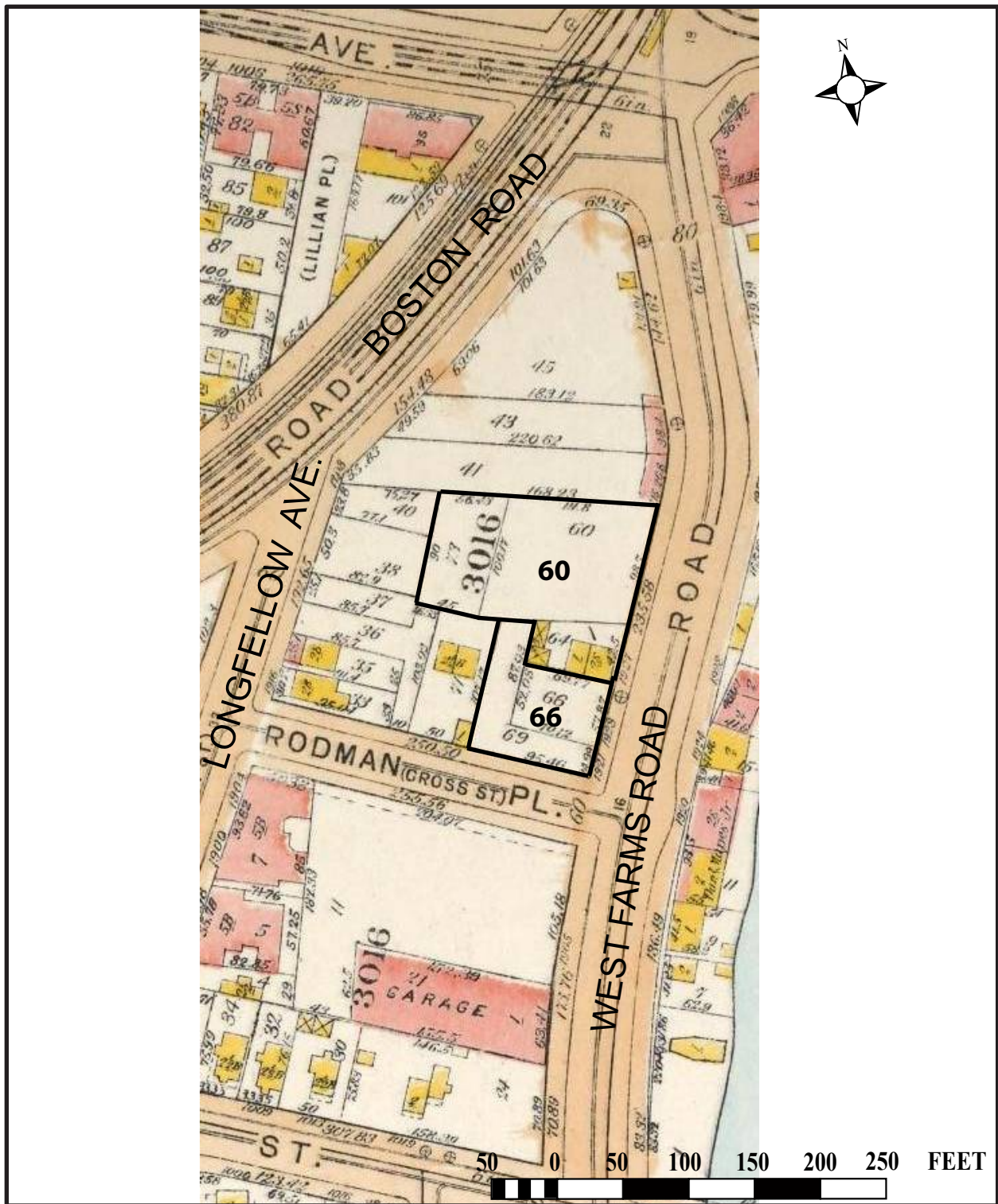
BASE MAP: Draft Damage Map, Section B, West Farms Road. Topographical Bureau, City of New York.

ARCHAEOLOGICAL DOCUMENTARY STUDY  
CROTONA PARK EAST PROPOSED REZONING  
BRONX, NEW YORK

FIGURE 18: PROJECT SITE LOCATION BLOCK 3009, 3013, AND 3014 IN 1896.

Note: Red lines demarcate boundaries of cemeteries. Lot numbers assigned for inventory purposes prior to the creation of Boone Avenue and East 172nd Street are highlighted in yellow.





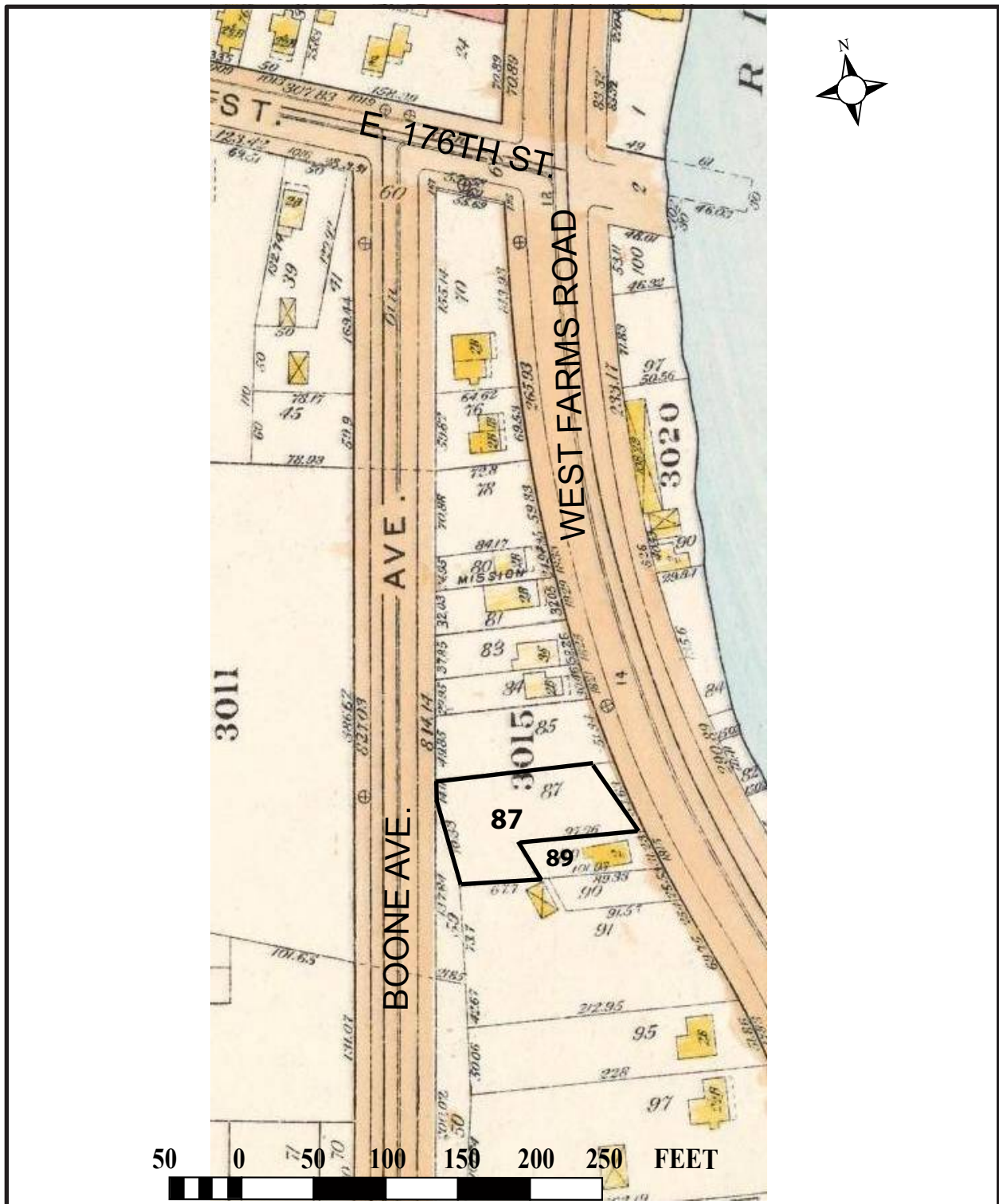
BASE MAP: *Atlas of the City of New York, borough of the Bronx, from actual surveys and official plans, Bromley and Company, Philadelphia.*

ARCHAEOLOGICAL DOCUMENTARY STUDY  
CROTONA PARK EAST PROPOSED REZONING  
BRONX, NEW YORK

FIGURE 19: PROJECT SITE LOCATION BLOCK 3016 IN 1921.





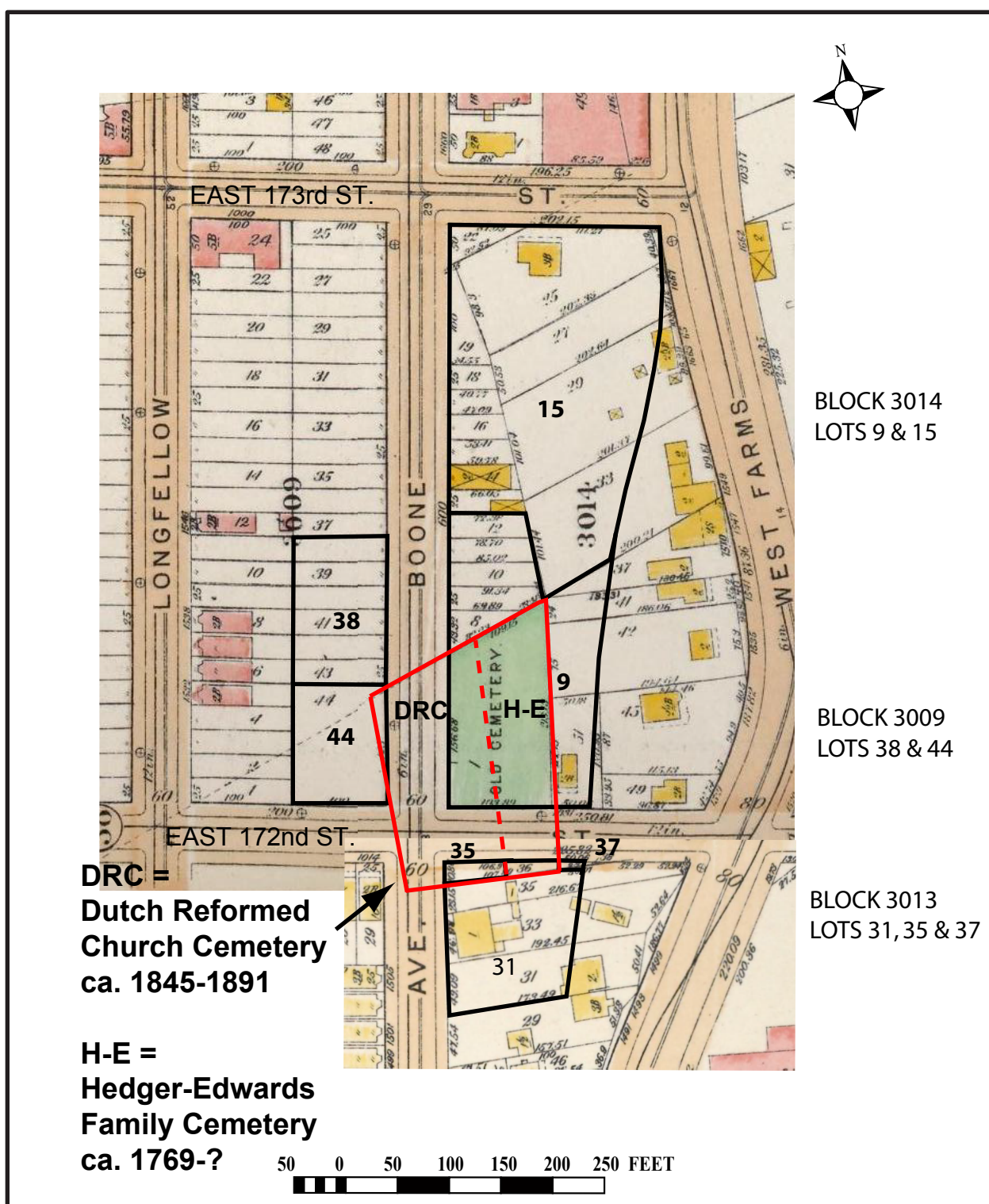


BASE MAP: *Atlas of the City of New York, borough of the Bronx, from actual surveys and official plans, Bromley and Company, Philadelphia.*

ARCHAEOLOGICAL DOCUMENTARY STUDY  
CROTONA PARK EAST PROPOSED REZONING  
BRONX, NEW YORK

FIGURE 20: PROJECT SITE LOCATION BLOCK 3015 IN 1921.





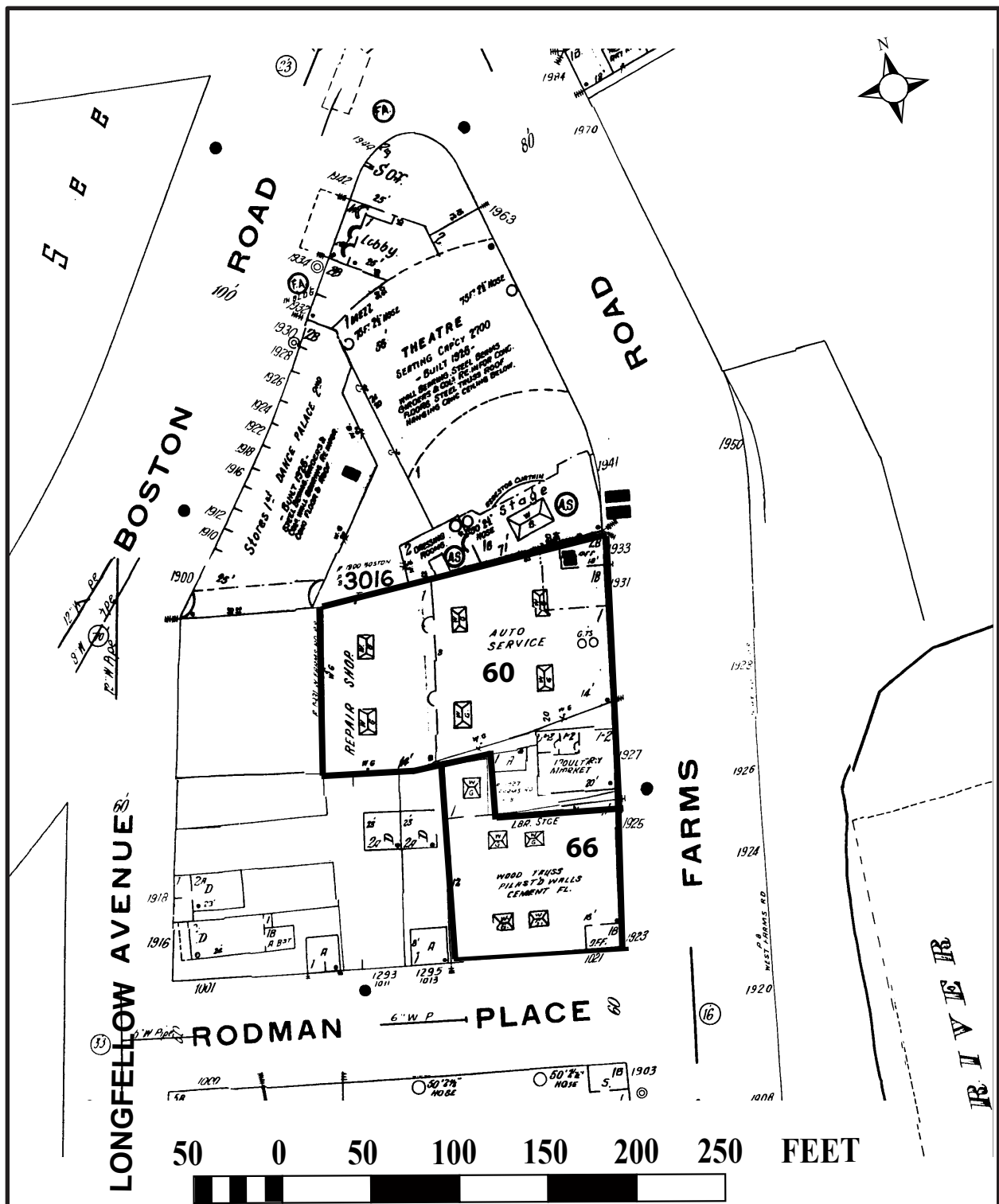
BASE MAP: *Atlas of the City of New York, borough of the Bronx, from actual surveys and official plans*, Bromley and Company, Philadelphia.

ARCHAEOLOGICAL DOCUMENTARY STUDY  
CROTONA PARK EAST PROPOSED REZONING  
BRONX, NEW YORK

FIGURE 21: PROJECT SITE LOCATION BLOCKS 3009, 3013, AND 3014 in 1921.  
Note: Red lines demarcate mapped boundaries of cemeteries.



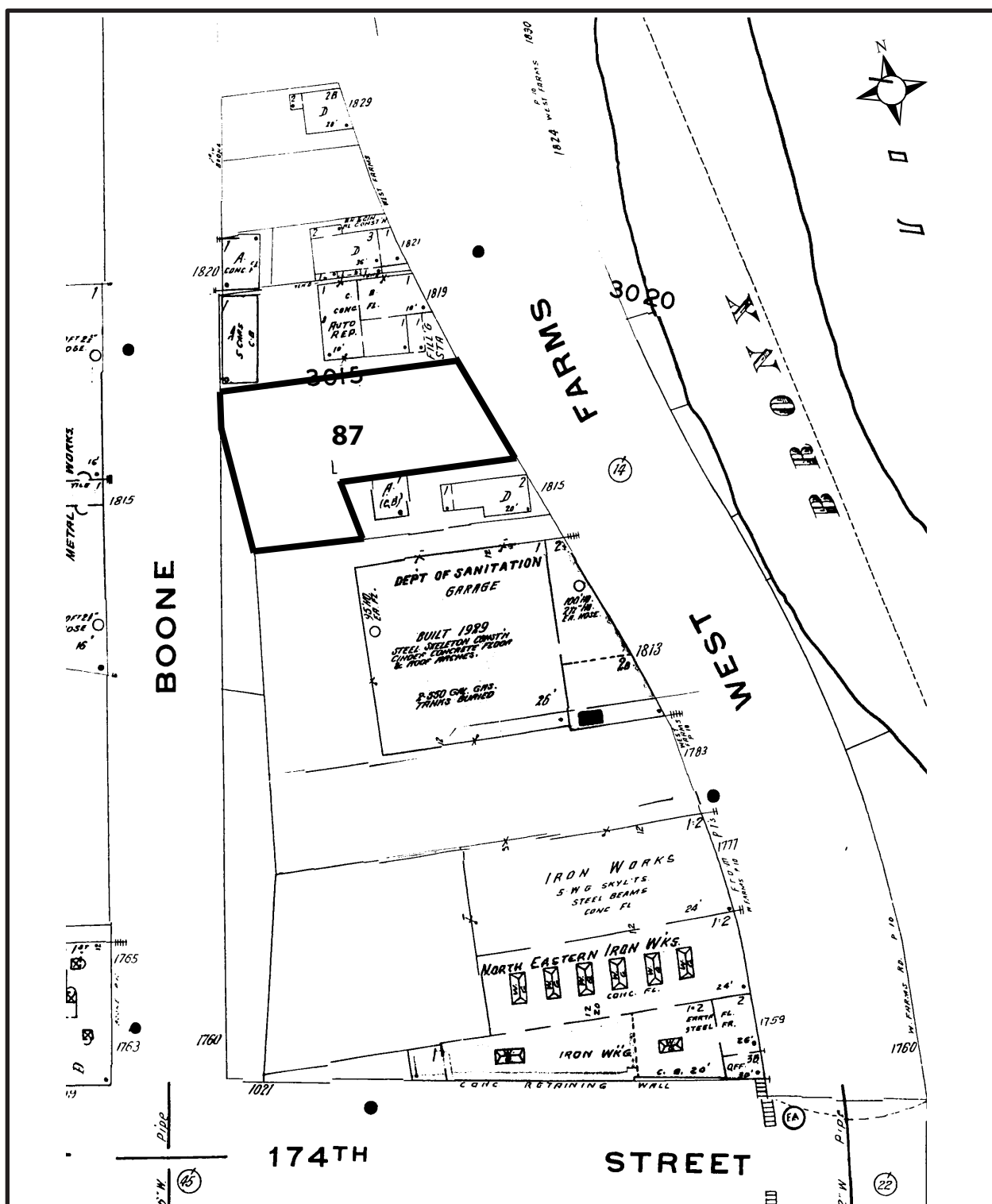




ARCHAEOLOGICAL DOCUMENTARY STUDY  
CROTONA PARK EAST PROPOSED REZONING  
BRONX, NEW YORK

FIGURE 22: PROJECT SITE LOCATION BLOCK 3016 IN 1951.



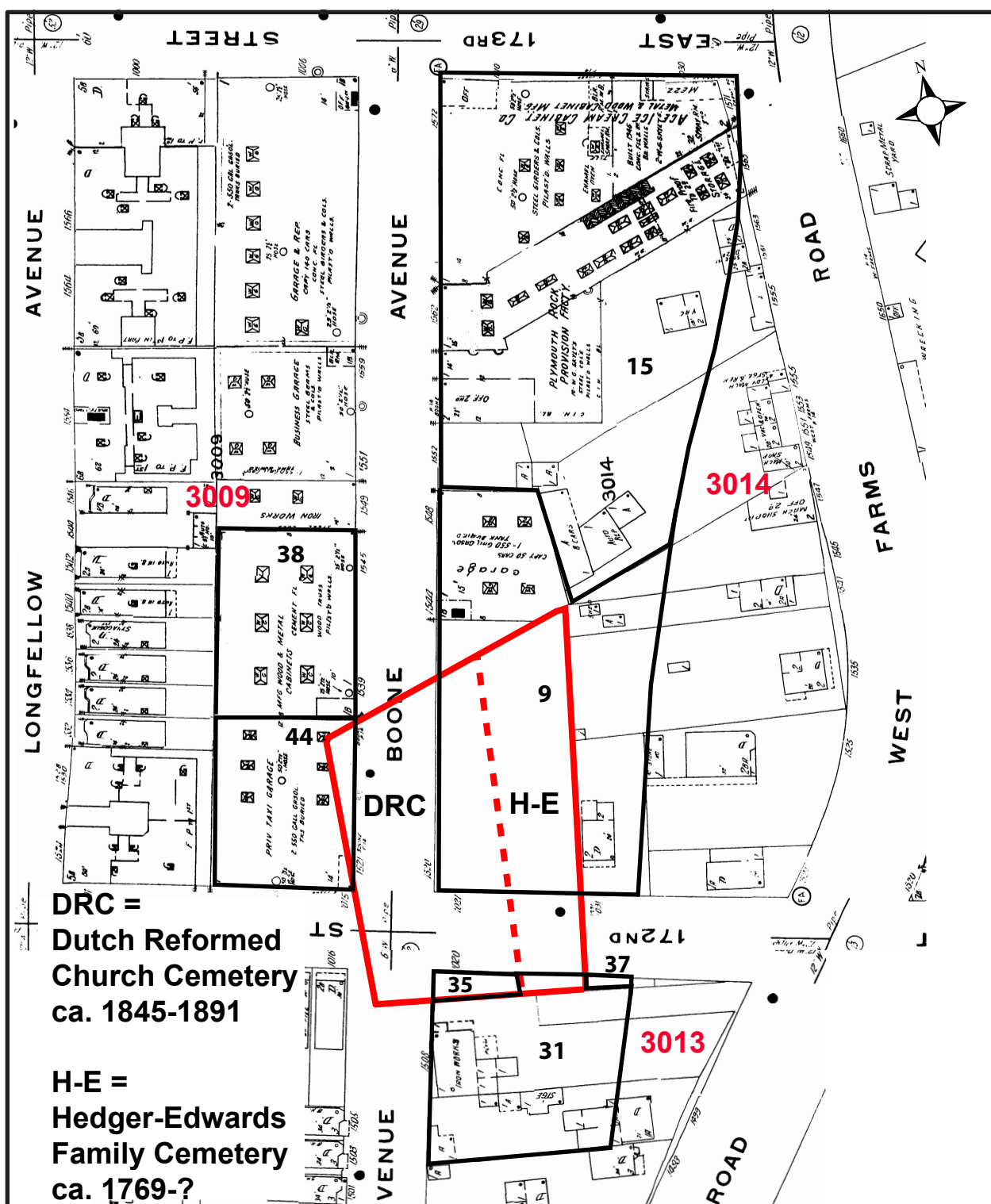


ARCHAEOLOGICAL DOCUMENTARY STUDY  
CROTONA PARK EAST PROPOSED REZONING  
BRONX, NEW YORK

FIGURE 23: PROJECT SITE LOCATION BLOCK 3015 IN 1951.







BASE MAP: Insurance Maps of the City of New York; Borough of the Bronx. Vol. 16, 1915 corrected to 1951. Sanborn Map Co., New York.

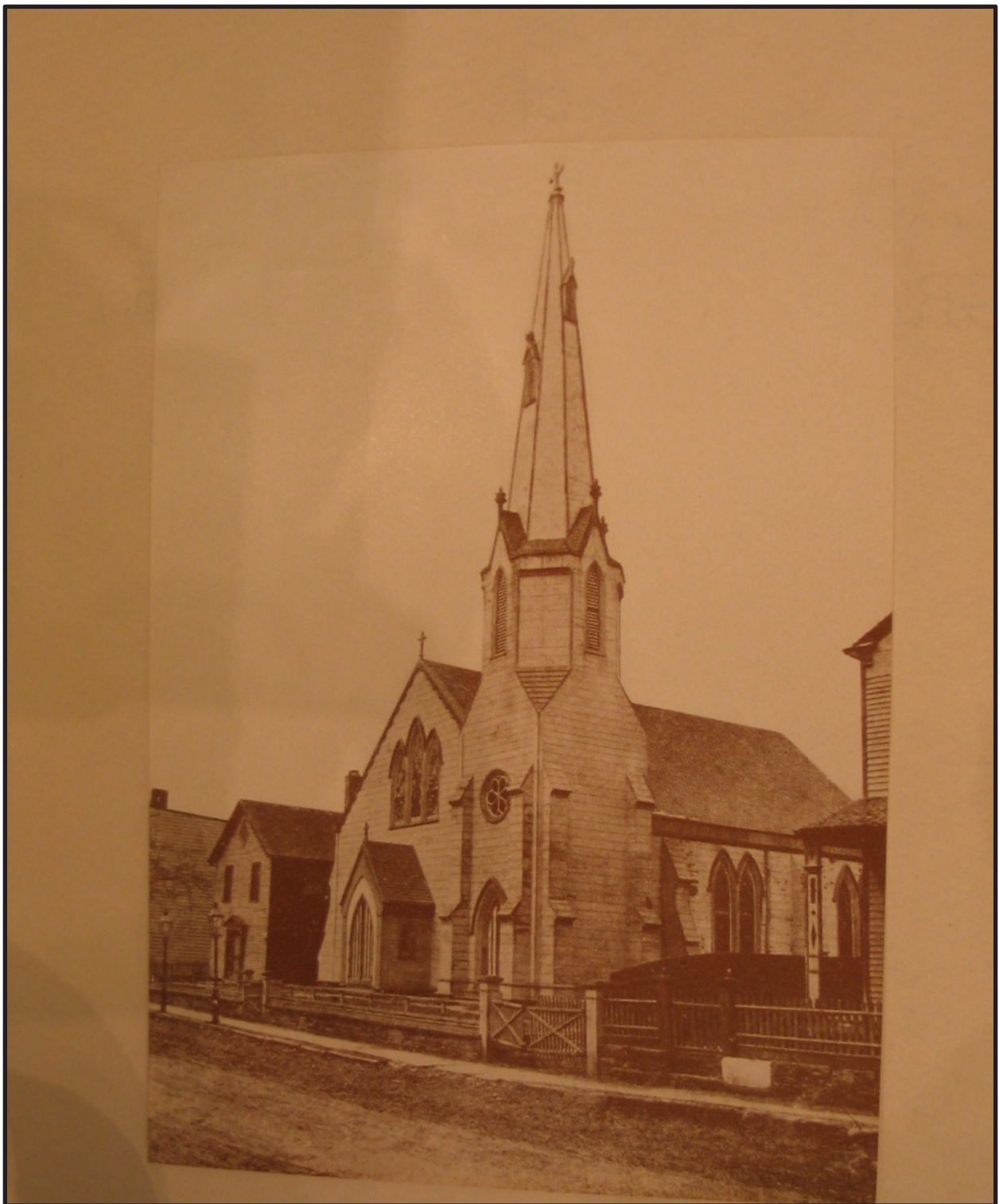
ARCHAEOLOGICAL DOCUMENTARY STUDY  
CROTONA PARK EAST PROPOSED REZONING  
BRONX, NEW YORK



FIGURE 24: PROJECT SITE LOCATION BLOCKS 3009, 3013, AND 3014 IN 1951.

Note: Red lines demarcate mapped boundaries of cemeteries.





SOURCE: *Reminiscences of Grace Church, West Farms, Bronx, New York, 1935.*

ARCHAEOLOGICAL DOCUMENTARY STUDY  
CROTONA PARK EAST PROPOSED REZONING  
BRONX, NEW YORK

FIGURE 25: GRACE EPISCOPAL CHURCH ON WEST FARMS ROAD,  
PRIOR TO DEMOLITION.

Note: Facing southwest from West Farms Road to Church  
with Parish Hall/School to left.





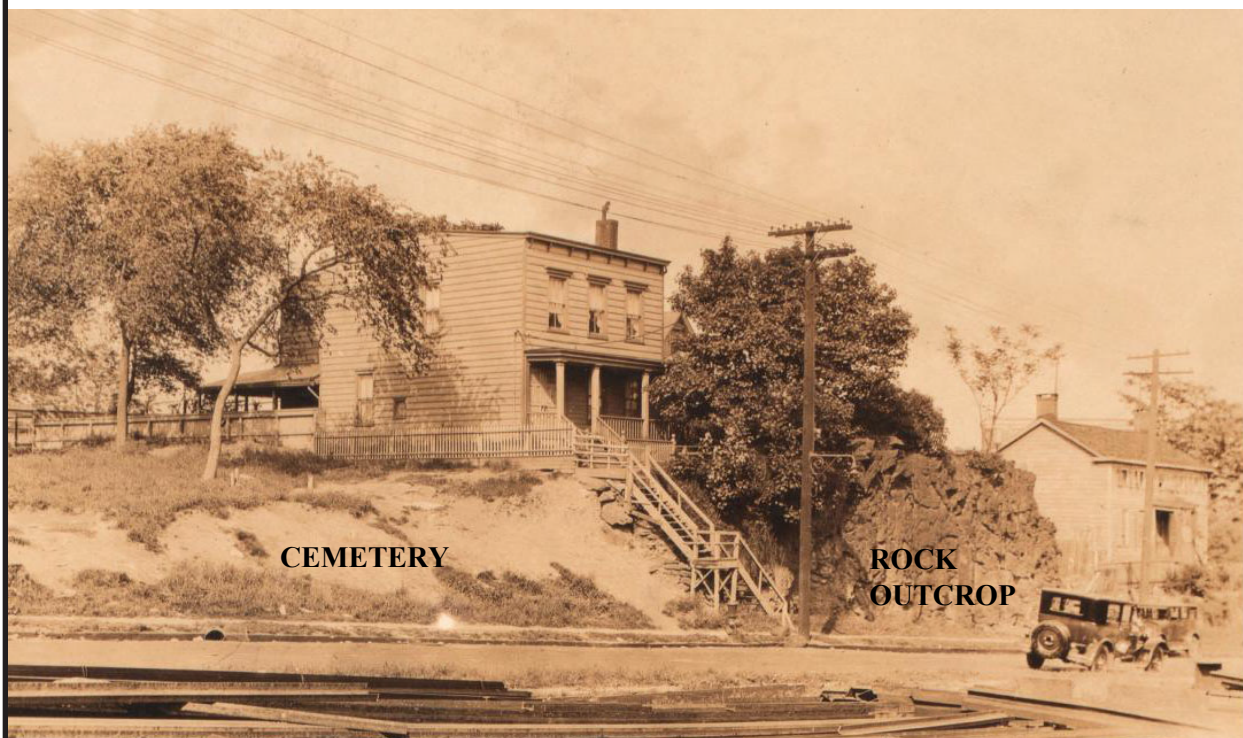


SOURCE: EAST 172ND STREET - WEST FARMS ROAD. SPERR, PERRY LOOMIS. NYPL DIGITAL IMAGES.

ARCHAEOLOGICAL DOCUMENTARY STUDY  
CROTONA PARK EAST PROPOSED REZONING  
BRONX, NEW YORK



FIGURE 26: TOP - BLOCK 3014 AND EAST 172ND STREET BEFORE WEST FARMS ROAD WAS MOVED WEST - FACING NORTHWEST FROM BLOCK 3013 IN 1928. BOTTOM - DWELLING ON BLOCK 3014 LOT 51 AFTER IT WAS MOVED NORTH INTO THE APE - FACING NORTHWEST FROM EAST 172ND STREET IN 1938.



SOURCE: *EAST 172ND STREET - BOONE AVENUE*. SPERR, PERRY LOOMIS. NYPL DIGITAL IMAGES.

ARCHAEOLOGICAL DOCUMENTARY STUDY  
CROTONA PARK EAST PROPOSED REZONING  
BRONX, NEW YORK

FIGURE 27: BLOCK 3014 LOT 1 CEMETERY AND LOT 51 HOUSE, FACING NORTHEAST  
FROM BOONE AVENUE AND EAST 172ND STREET IN 1928.





