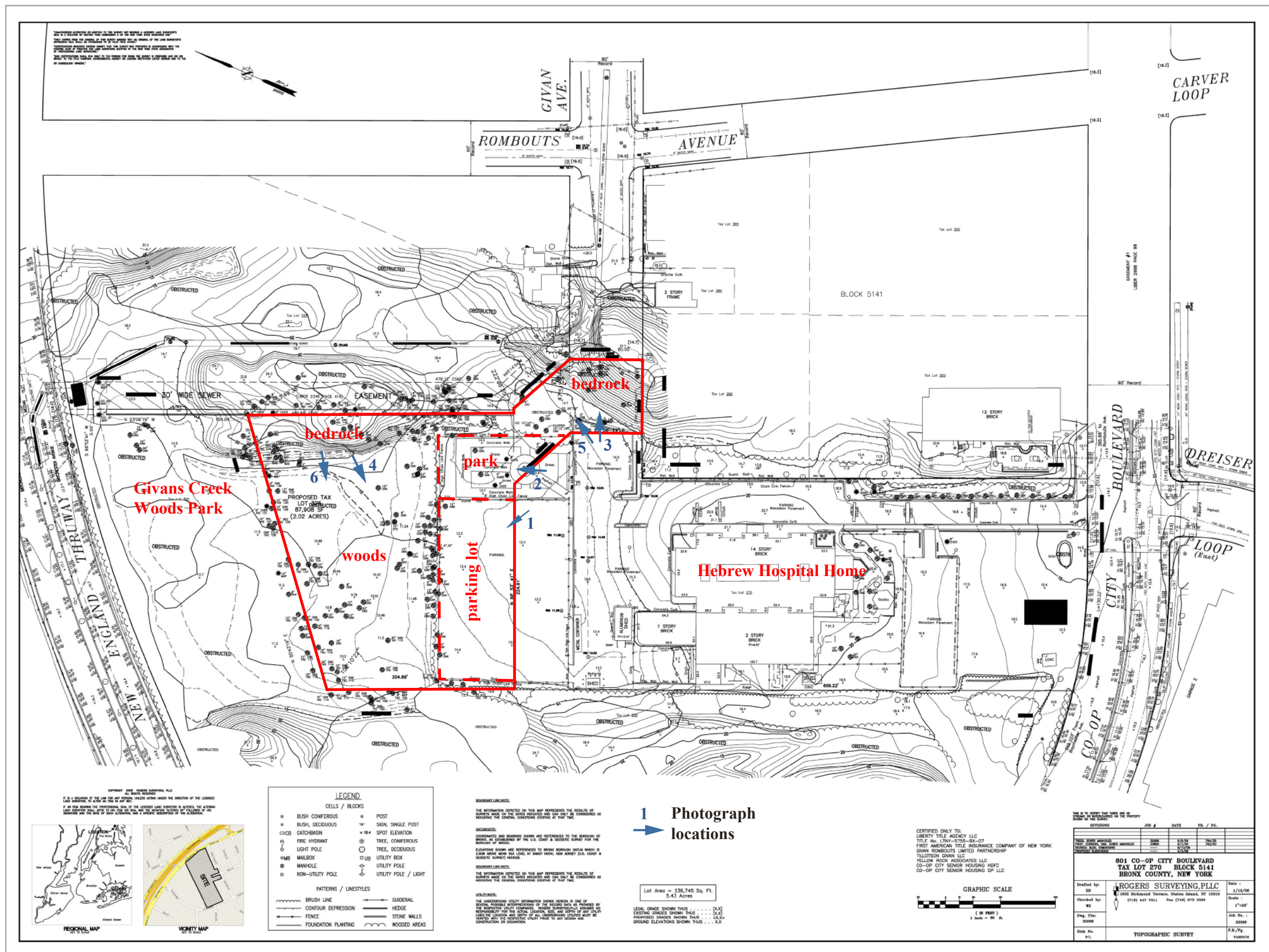


Phase IA Archaeological Assessment
 801 Co-op City Boulevard, Block 5140, Part of Lot 270
 Bronx, Bronx County, New York

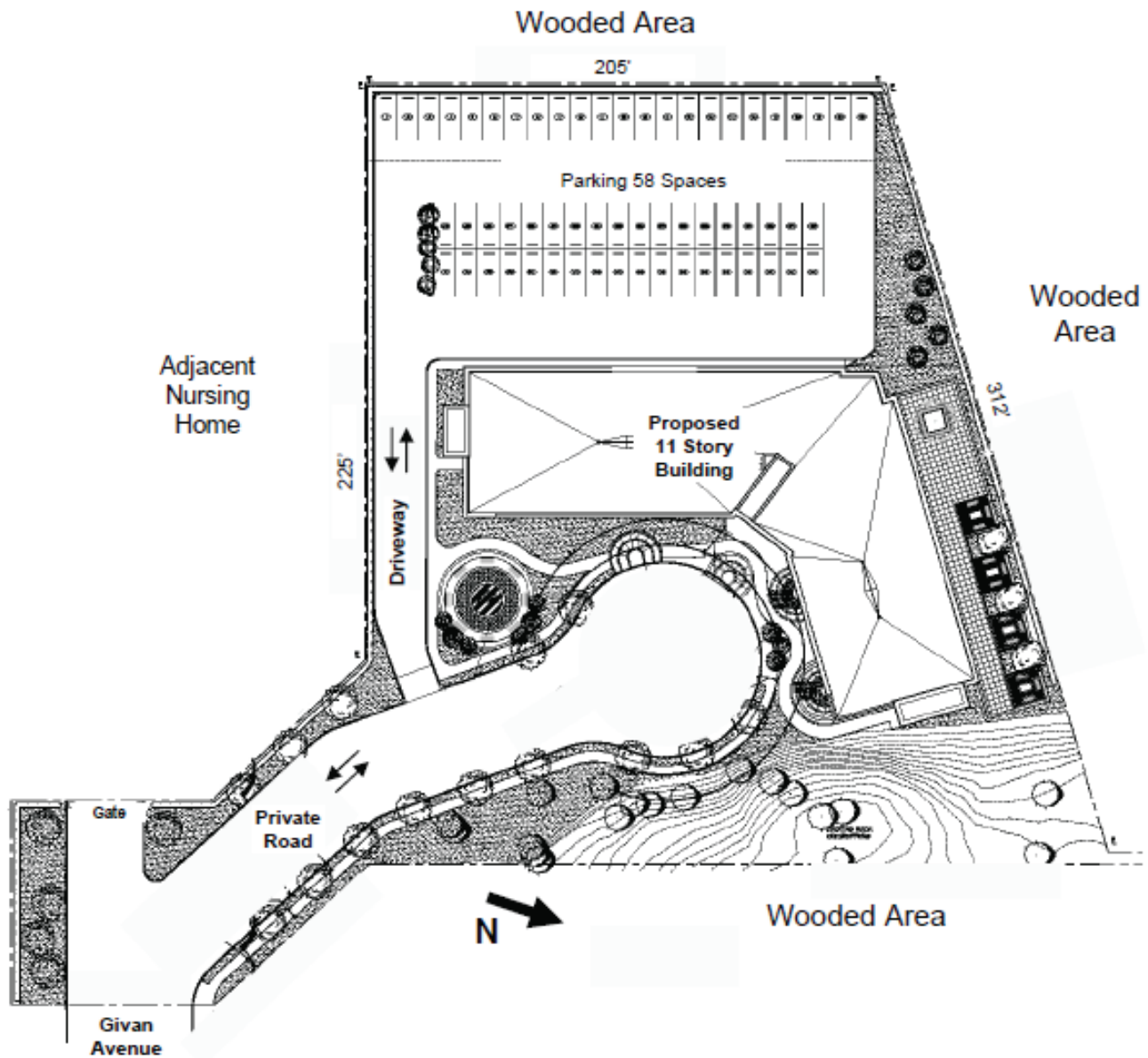


Figure 1: Project site on *Mount Vernon, New York* and *Flushing, New York* 7.5 Minute Quadrangles (U.S.G.S. 1979a and 1979b).
 [Note that despite its 1979 publication date, this map depicts conditions on the project site prior to 1974].

0 1000 2000 3000 4000 5000 FEET



Proposed Project Site Plan



Phase IA Archaeological Assessment
801 Co-op City Boulevard, Block 5140, Part of Lot 270
Bronx, Bronx County, New York

Figure 3: Proposed project development (Crowell Planning Associates 2009).



0 40 80 120 160 200 FEET

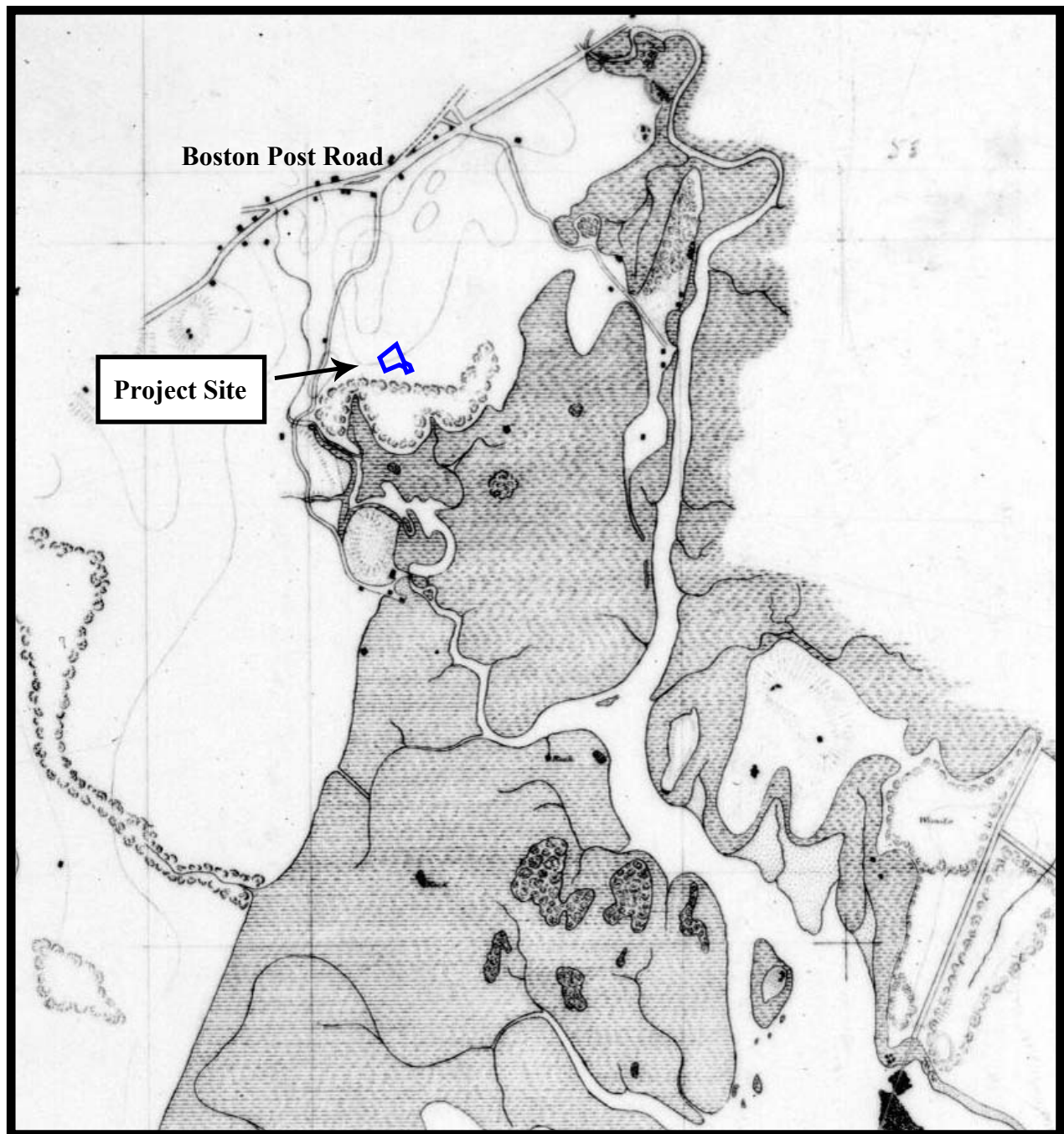


Phase IA Archaeological Assessment
 801 Co-op City Boulevard, Block 5140, Part of Lot 270
 Bronx, Bronx County, New York



Figure 4: Project site on soil map (U.S.D.A. 2005).

0 2000 4000 6000 8000 10,000 FEET

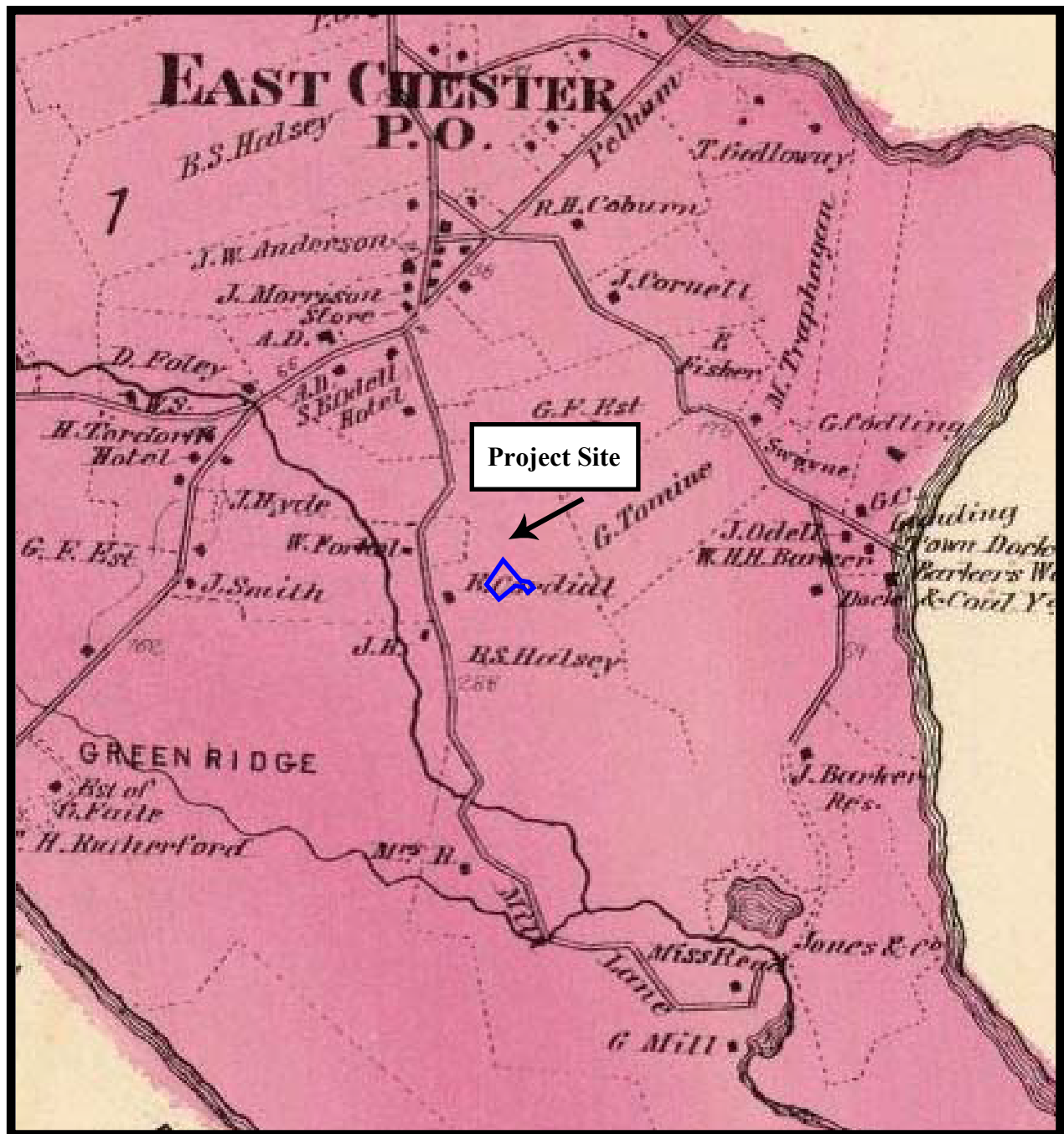


Phase IA Archaeological Assessment
 801 Co-op City Boulevard, Block 5140, Part of Lot 270
 Bronx, Bronx County, New York



Figure 5: Project site on *Map of a Part of the Coast of Long Island, N.Y. from Rodman to Throgs Neck* (U.S.C.S. 1837).

0 1000 2000 3000 4000 5000 FEET

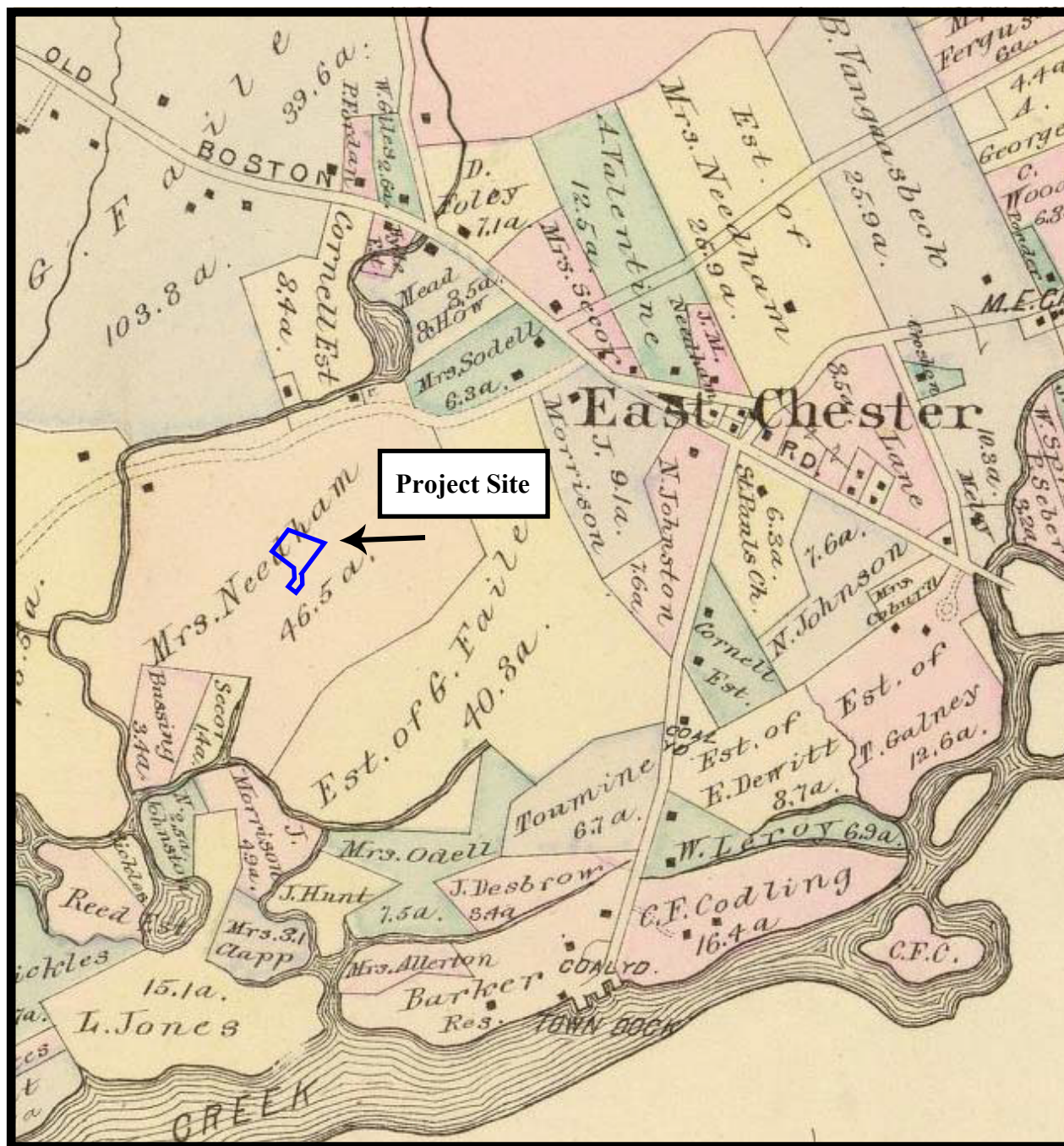


Phase IA Archaeological Assessment
 801 Co-op City Boulevard, Block 5140, Part of Lot 270
 Bronx, Bronx County, New York



Figure 6: Project site on *Atlas of New York and Vicinity* (Beers 1868).

0 1000 2000 3000 4000 5000 FEET

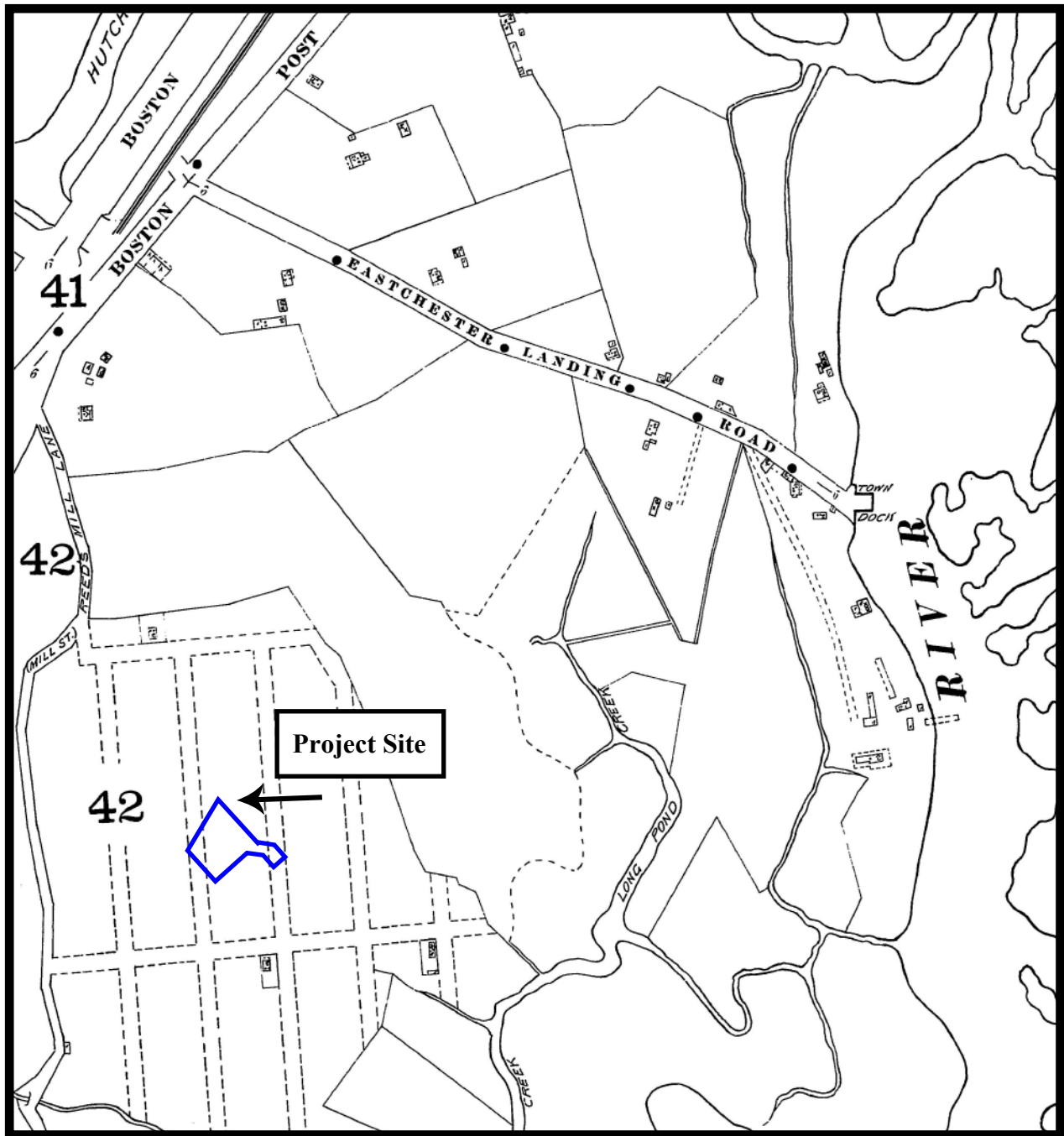


Phase IA Archaeological Assessment
 801 Co-op City Boulevard, Block 5140, Part of Lot 270
 Bronx, Bronx County, New York



Figure 7: Project site on *Atlas of the Westchester County, New York* (Bromley 1881).

0 1000 2000 3000 4000 5000 FEET

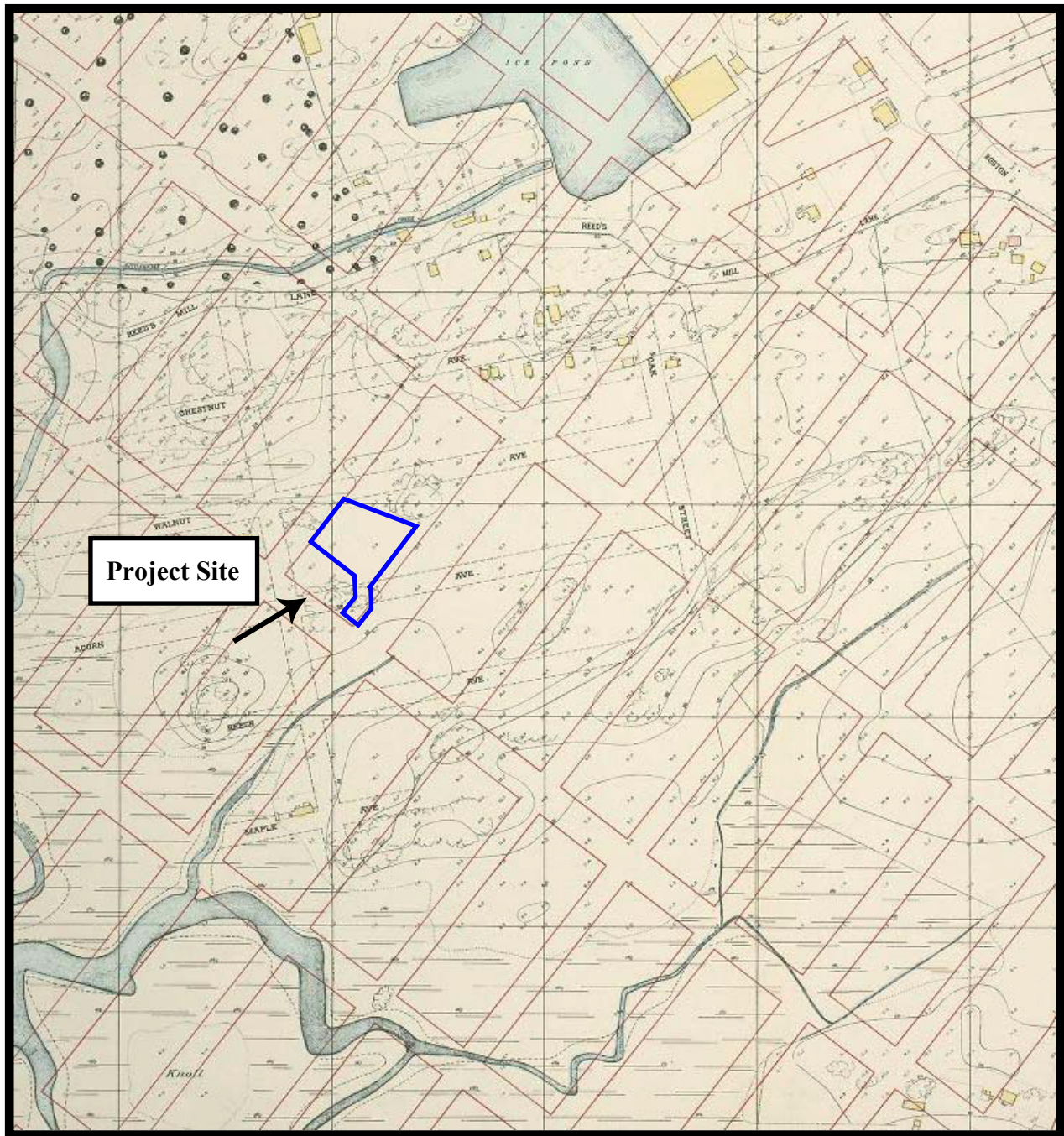


Phase IA Archaeological Assessment
 801 Co-op City Boulevard, Block 5140, Part of Lot 270
 Bronx, Bronx County, New York



Figure 8: Project site on *Insurance Maps of the City of New York: Borough of the Bronx* (Sanborn 1897).

0 500 1000 1500 2000 2500 FEET

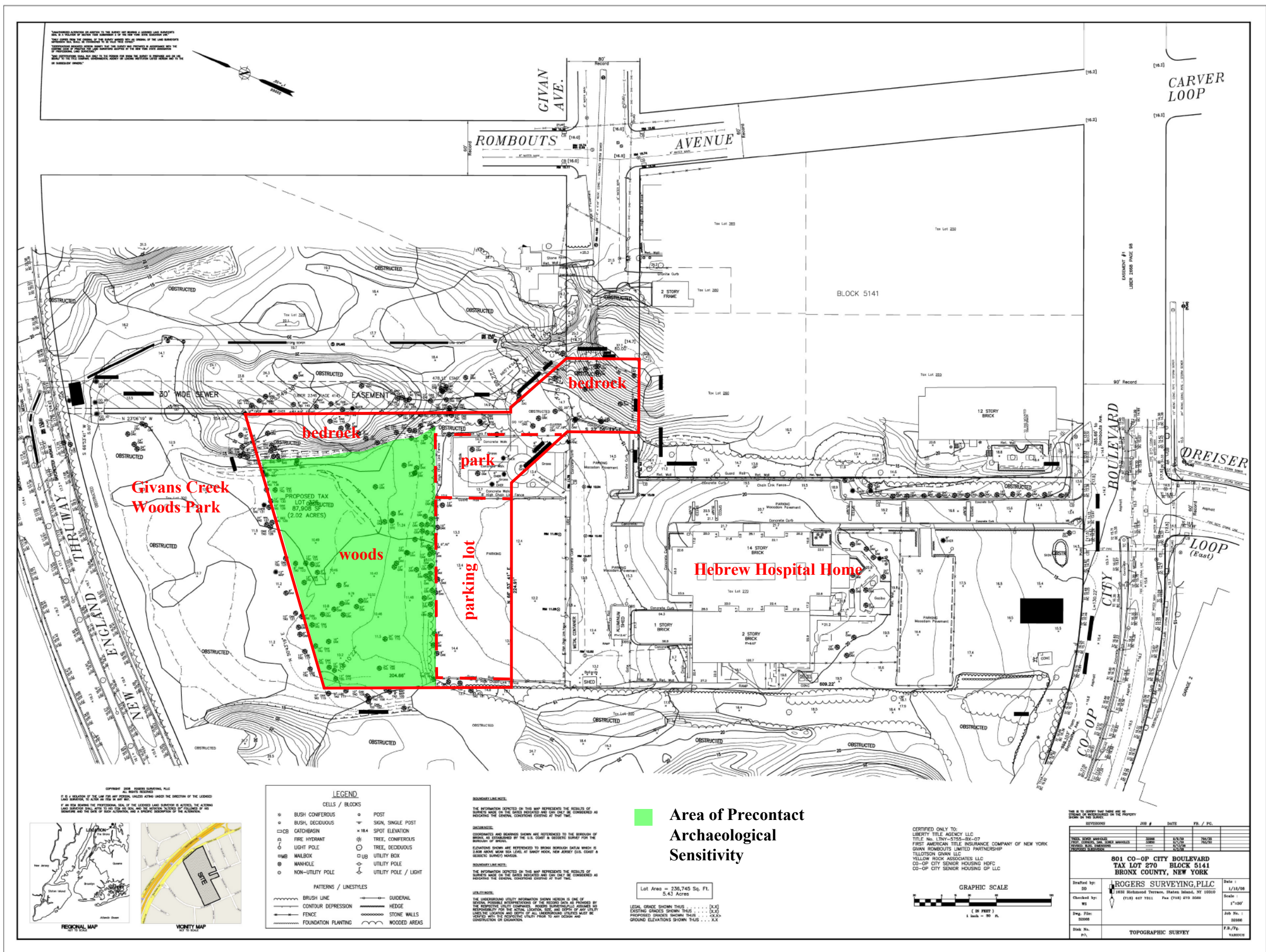


Phase IA Archaeological Assessment
801 Co-op City Boulevard, Block 5140, Part of Lot 270
Bronx, Bronx County, New York



Figure 9: Project site on *Topographical Survey of the Borough of the Bronx, Easterly of the Bronx River* (Topographical Bureau 1905).

0 500 1000 1500 2000 2500 FEET





Photograph 1: Project site showing existing parking lot on southwestern side of property. Note cracked asphalt and water pooling on left. View looking west.



Photograph 2: Project site showing landscaped park area east of parking lot. Wooden surveyor's stake in left foreground marks southern project boundary. View looking northwest.



Photograph 3: Project site showing large bedrock ridge at southeastern edge of property. View looking northeast.



Photograph 4: Project site showing swale or intermittent creek bed filled with standing water. View looking southwest.

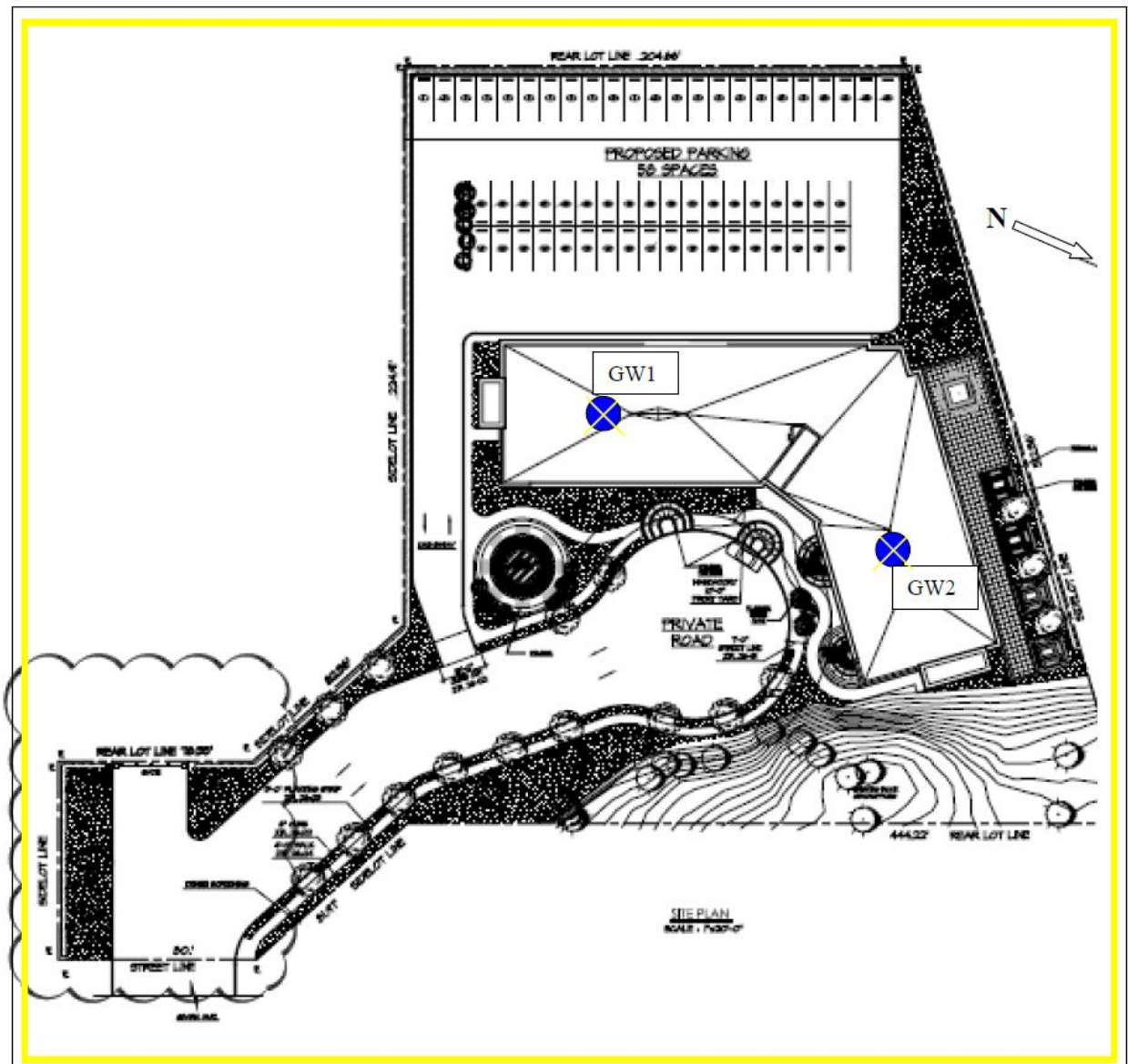



Photograph 5: Project site showing utility disturbance (note vertical pipe in approximate center of image) at southeast end of project site. View looking northeast.



Photograph 6: Project site showing typical vegetation in wooded area. Orange surveyor's stake in left foreground marks swale or creek bed. View looking southeast from top of bedrock ridge at northeast side of property.

APPENDIX A: SOIL BORINGS



 Groundwater Sampling Location

Geologic Boring Log Details



ENVIRONMENTAL BUSINESS CONSULTANTS

SB1 Boring Log

Location: SW corner of property, in parking lot.		Depth to Water (ft. from grade.)		Site Elevation Datum
Site Name: ARK0704	Address:		Date	DTW
	801 Co-op City Blvd, Bronx, NY		Groundwater depth	
Drilling Company: LVS, Inc.		Method: Geoprobe		Well Specifications
Date Started: 9/5/2009		Date Completed: 9/5/2009		
Completion Depth: 7.5 feet		Geologist Charles Sosik		
		Not Encountered		None

B1 (NTS)	DEPTH (ft below grade)	SAMPLES			SOIL DESCRIPTION
		Reco- very (in.)	Blow per 6 in.	PID (ppm)	
	0				
	to	24		0.0	Fill material, bricks and rubble in dk brwn silty soil matrix. No odor. Sample retained at 0-2 ft
	4				
	to	24		0.0	Fill material in dk brwn silty soil matrix. Friable bedrock, mica shist in bottom 6". Rejection at 7.5 ft. No odor. Sample retained at 6-8'.
	8				
	to				
	12				
	to				
	16				
	to				
	20				
	to				
	24				

Geologic Boring Log Details



ENVIRONMENTAL BUSINESS CONSULTANTS

SB2 Boring Log

Location: NW corner of property, in woods.		Depth to Water (ft. from grade.)		Site Elevation Datum	
Site Name: ARK0704		Address:		Date	DTW
		801 Co-op City Blvd, Bronx, NY		Ground Elevation	
Drilling Company: LVS, Inc.		Method: Geoprobe		Groundwater depth	
Date Started: 9/5/2009		Date Completed: 9/5/2009		Not Encountered	
Completion Depth: 4 feet		Geologist Charles Sosik		Well Specifications	
				None	

B1 (NTS)	DEPTH (ft below grade)	SAMPLES			SOIL DESCRIPTION
		Reco- very (in.)	Blow per 6 in.	PID (ppm)	
	0				6" topsoil followed by dk brwn silty clay. Decomposed mica shist bottom 3". Rejection at 4'. Sample retained at 0-2 ft
	to	30		0.0	
	4				
	to				
	8				
	to				
	12				
	to				
	16				
	to				
	20				
	to				
	24				



SB3 Boring Log

[illegible]

Geologic Boring Log Details



ENVIRONMENTAL BUSINESS CONSULTANTS

SB4 Boring Log

Location: SE corner of property, in garden/employee sitting area.			Depth to Water (ft. from grade.)		Site Elevation Datum	
Site Name: ARK0704		Address: 801 Co-op City Blvd, Bronx, NY		Date	DTW	Ground Elevation
				Groundwater depth		Well Specifications
Drilling Company: LVS, Inc.		Method: Geoprobe		approx 9'		
Date Started: 9/5/2009		Date Completed: 9/5/2009		None		
Completion Depth: 12 feet		Geologist Charles Sosik				

B1 (NTS)	DEPTH (ft below grade)	SAMPLES			SOIL DESCRIPTION
		Recovery (in.)	Blow per 6 in.	PID (ppm)	
	0				
	to	24		0.0	4" topsoil fillwd by fill material, bricks & rubble in dk brwn silty soil matrix. Bottom 3" of sample contains native soil: brwn silty soil w/ mica shist rx fragments. No odor. Sample retained at 0-2'
	4				
	to	24		0.0	Friable mica shist top 1' followed by 9" brwn clayey silt high in organic material. Bottom 3" contains bog material, damp. No odor
	8				
	to	24		0.0	DK brwn silty bog material followed by 3" coarse sand and gravel then 1' boggy, silty clay. Sample saturated above clay. No odor. Sample retained at 10-12'
	12				
	to				
	16				
	to				
	20				
	to				
	24				

Geologic Boring Log Details



ENVIRONMENTAL BUSINESS CONSULTANTS

SB5 Boring Log

Location: NE corner of property, in woods			Depth to Water (ft. from grade.)		Site Elevation Datum	
Site Name: ARK0704		Address:		Date	DTW	Ground Elevation
		801 Co-op City Blvd, Bronx, NY		Groundwater depth		
Drilling Company: LVS, Inc.		Method: Geoprobe		approx 7'		Well Specifications
Date Started: 9/5/2009		Date Completed: 9/5/2009		Encountered		None
Completion Depth: 12 feet		Geologist Charles Sosik				

B1 (NTS)	DEPTH (ft below grade)	SAMPLES			SOIL DESCRIPTION
		Reco- very (in.)	Blow per 6 in.	PID (ppm)	
	0				
	to	24		0.0	1' topsoil followed 1ft decomposed mica shist. No odor. Sample retained at 0-2'
	4				
	to	24		0.0	Decomposed mica shist Wet. No odor
	8				
	to	30		0.0	Decomposed mica shist becoming competent at 12'. Wet. No odor. Sample retained at 10-12'. Set temporary well for GW sample.
	12				
	to				
	16				
	to				
	20				
	to				
	24				