

HISTORICAL
PERSPECTIVES INC.



Archaeological Field Investigation

**Van Cortlandt Park Green Infrastructure at the
Tennis Courts, Lake House, and Riverdale Stables
Bronx, New York 10463
Parts of Block 5900, Lots 1 and 150
Department of Parks & Recreation Contract # X092-222M**

**Archaeological Field Investigation
Van Cortlandt Park Green Infrastructure at the
Tennis Courts, Lake House, and Riverdale Stables
Bronx, New York 10463
Parts of Block 5900, Lots 1 and 150
Department of Parks & Recreation Contract # X092-222M**

Prepared For:

City of New York Department of Parks & Recreation
Flushing Meadows-Corona Park
Olmsted Center
Flushing, NY 11368

Prepared By:

Historical Perspectives, Inc.
P.O. Box 529
Westport, CT 06881

Author:

Sara F. Mascia, Ph.D., R.P.A.

May 2024

EXECUTIVE SUMMARY

The New York City Department of Parks and Recreation (Parks) has proposed green infrastructure improvements to three specific areas within Van Cortlandt Park in the Bronx, New York (Figure 1). The proposed project includes a subsurface retention system to the southwest of the existing Tennis Courts, which is near the Van Cortlandt House Museum and a comfort station, and rain gardens in proximity to the Van Cortlandt Lake House and the Riverdale Stables (Figures 2-4). The objective is to reduce the overall amount of stormwater flowing into combined sewer overflows. The rain garden practices will be constructed with native plantings and each practice will manage stormwater on-site to reduce pollutant loads and slow runoff to Van Cortlandt Lake/Hester and Piero's Mill Pond and the combined sewer system. As result of construction, affected lawn areas, curbs, fences, and pavements will be reconstructed.

Historical Perspectives, Inc. (HPI) was retained by Parks to prepare an Archaeological Testing Work Plan (Work Plan) for the planned field investigation of the three project loci. The Work Plan was submitted to Parks, the New York City Landmarks Preservation Commission (LPC), and the interested Indigenous Tribes for review in November 2023 and approved by LPC in December 2023.

The archaeological excavations in all three loci were conducted in December 2023. Prior to the initiation of fieldwork, HPI contacted LPC and the Tribal representatives to provide them with the testing start date. The archaeological field testing was undertaken and/or supervised by a Registered Professional Archaeologist (RPA) and a Registered Archaeologist (RA). HPI performed all work and recorded all archaeological activities according to the approved Work Plan.

Archaeological testing entailed excavating a total of 48 Shovel Tests (STs), including judgmentally placed STs and Array STs. Within each testing locus, the archaeologists encountered relatively uniform stratigraphy, which was often characterized by disturbed soil strata. All STs measured 40 to 50 centimeters in diameter and were excavated to either undisturbed non-artifact bearing subsoil or were terminated due to obstructions that prevented further soil removal.

Field testing found that the APE within two of the three loci did not possess any precontact deposits. Only two precontact artifacts were recovered from the upper modern strata in the Tennis Courts locus. This is likely due to the prior disturbance caused by land manipulation and the introduction of underground utilities (e.g., electric and water), to the Tennis Courts locus during the 20th century. Similarly, all historic deposits in the Tennis Courts locus were found in disturbed soils or mixed with modern material. In both the Lake House and Riverdale Stables loci extensive disturbance and/or filling was identified during the field investigation. Additional testing is not recommended for archaeological resources within the APE for all three of the project loci.

TABLE OF CONTENTS

| | |
|---|----|
| EXECUTIVE SUMMARY | ii |
| INTRODUCTION | 1 |
| FIELD METHODOLOGY | 1 |
| PROJECT SETTING | 2 |
| RESULTS OF INVESTIGATIONS | 2 |
| CONCLUSIONS AND RECOMMENDATIONS | 4 |
| BIBLIOGRAPHY | 6 |
| FIGURES | |
| PHOTOGRAPHS | |
| APPENDIX A: Record of Shovel Test Excavations | |
| APPENDIX B: Catalog of Recovered Artifacts | |

List of Figures

1. Project site on *Yonkers, N.Y.-N.J. 7.5 Minute Quadrangle*, (U.S.G.S. 2019).
2. Schematic Proposal for the Tennis Courts Locus (Parks 2022).
3. Schematic Proposal for the Lake House Locus (Parks 2022).
4. Schematic Proposal for the Riverdale Stables Locus (Parks 2022).
5. Location of Shovel Tests (STs) at the Tennis Courts Locus (Parks 2022; HPI 2024).
6. Location of Shovel Tests (STs) at the Lake House Locus (Parks 2022; HPI 2024).
7. Location of Shovel Tests (STs) at the Riverdale Stables Locus (Parks 2022; HPI 2024).

List of Photographs

- Photograph 1. The Tennis Courts Locus, Facing North.
Photograph 2. The Lake House Locus, Facing East.
Photograph 3. The Riverdale Stables Locus, Facing Southwest.
Photograph 4. Stratigraphy at the Tennis Courts Locus, ST 90S90W.
Photograph 5. Disturbed Strata Observed in ST S120W0 Array 9W at the Tennis Courts Locus.
Photograph 6. Collection of surface stones from ST 30S150W.
Photograph 7A. Quartz biface and unidentified plastic fragment recovered from ST 120S0W.
Photograph 7B. Reverse side of Quartz biface.
Photograph 8. ST S120W0, Array 9S at the Tennis Courts Locus.
Photograph 9A. Chert Flake Recovered from ST 120S0W Array 9S.
Photograph 9B. Reverse of Chert Flake.
Photograph 10. Dark Green Hand Blown Bottle Base Fragments from STs 120S0W, Array 3S and 105S30W.
Photograph 11. Salt-glazed Stoneware recovered with Unidentified Plastic in ST 150S30W.
Photograph 12. Decorative Metal Button Fragment found with Pull-top Fragment in ST 150S30W.
Photograph 13. Smoking Pipe Stem and Anthracite Coal Fragments Recovered from ST 150S0W.
Photograph 14. ST J2 at the Lake House Locus. Note rocks and bricks in the base of the ST.
Photograph 15. ST N200W200 at the Riverdale Stables Locus.
Photograph 16. ST J1 at the Riverdale Stables Locus.
Photograph 17. Fragments of a pitcher recovered from ST N100W200 at the Riverdale Stables Locus.
Photograph 18. Selection of bottle fragments recovered from ST N200W200 at the Riverdale Stables Locus.
Photograph 19. Waterman's Ink bottle recovered from ST N200W100 at the Riverdale Stables Locus.
Photograph 20. Jar Rim, Medicine Bottle, and Lysol Bottle (right) recovered from ST N100W200 at the Riverdale Stables Locus.
Photograph 21. Ceramics recovered from ST N100W200 at the Riverdale Stables Locus. Note the horse on the small pitcher (top).
Photograph 22. Light bulb recovered from ST N100W200 at the Riverdale Stables Locus.
Photograph 23. Marble and bottle top recovered from ST J1 at the Riverdale Stables Locus.
Photograph 24. Metal Compact recovered from ST J1 at the Riverdale Stables Locus.

I. Introduction

The New York City Department of Parks and Recreation (Parks) has proposed green infrastructure improvements to three specific areas within Van Cortlandt Park in the Bronx, New York (Figure 1). The proposed project includes a subsurface retention system to the southwest of the existing Tennis Courts, which is near the Van Cortlandt House Museum and a comfort station, and rain gardens in proximity to the Van Cortlandt Lake House and the Riverdale Stables (Figures 2-4). The objective is to reduce the overall amount of stormwater flowing into combined sewer overflows. The rain garden practices will be constructed with native plantings and each practice will manage stormwater on-site to reduce pollutant loads and slow runoff to Van Cortlandt Lake/Hester and Piero's Mill Pond and the combined sewer system. As result of construction, affected lawn areas, curbs, fences, and pavements will be reconstructed.

The Area of Potential Effect (APE) is defined in 36 CFR 800.16(d) as “the geographic area or areas within which an undertaking may directly or indirectly cause changes in the character or use of historic properties, if any such properties exist. In accordance with 36 CFR 800.4(a)(1), the Area of Potential Effect (APE) for the project was defined for three proposed green infrastructure loci based on the scope of work described above. Within each locale, an area representing potential direct effects from physical alterations or ground disturbance associated with the project was identified, including locations in which the proposed project has the potential to affect potential archaeological resources.

Historical Perspectives, Inc. (HPI) was retained by Parks to prepare an Archaeological Testing Work Plan (Work Plan) for the planned field investigation of the three project loci. The Work Plan was submitted to Parks, the New York City Landmarks Preservation Commission (LPC), and the interested Indigenous Tribes for review in November 2023 and approved by LPC in December 2023.

II. Field Methodology

The archaeological field testing program described in the Work Plan consisted of shovel testing at each locus, to confirm the presence or absence of archaeological resources within the proposed APEs, and to document past disturbance to each area. The standard shovel tests are hand-excavated units that generally measure approximately 40 cm in diameter and extend up to approximately 1 meter in depth. The shovel tests were excavated to natural subsoil where possible. Soil excavated from shovel tests was screened through ¼-inch wire mesh to retrieve any artifacts. Any artifacts found during excavation were professionally cleaned, documented, packaged, cataloged, and boxed in an appropriate archival manner at HPI's off-site laboratory and provided safe archival storage for the duration of the project contract. At the end of the contract, unless otherwise indicated in writing by Parks, HPI will deliver all archaeological resources to a storage location identified by Parks.

During the field investigation, professional standards for screening, recordation, labeling, mapping, photography, and cataloging were observed. A daily record of the archaeological testing effort was completed, including field notes, photographs/photo logs (including menu boards as warranted) and appropriate mapping/ drawings. The field team utilized the North American Datum 1983—NAV83 with a vertical datum of NAVD88 during the field testing and depths for the shovel tests were taken or converted to English system, to align with the NAV83 and NAVD88 data.

Finally, the Work Plan specified that the placement and number of the shovel tests at each locus would vary according to the specific conditions in each area. The Work Plan specifically stated that:

At the Tennis Courts locus, shovel tests will be placed within the APE boundaries south of the east-west drainage line that was previously tested in 1996. A standard grid using a 30-foot testing interval will be implemented where possible. Judgmentally placed shovel tests will be placed where the grid cannot be implemented due to trees or other obstructions. Additional “arrays” around shovel tests will be excavated at the four cardinal directions if isolated precontact period artifacts are found within natural strata.

At the Lake House locus, several judgmentally placed shovel tests will be excavated at the far eastern end of the APE, which is the lowest lying landform and where it is possible that

there has been less fill placed. The remainder of the Lake House APE has known and deep fill strata, which will not be breached by the planned green infrastructure work. No shovel tests will be placed in this filled and sloped area.

At the Riverdale Stables locus, a series of large-interval (approximately 100 feet) or judgmentally placed shovel tests will be excavated in order to confirm disturbance. The precise location and interval of the shovel tests will be determined in the field. Should these shovel tests reveal archaeological resources within intact natural strata above the subsoil, then additional, closer-interval shovel tests will be completed to determine the extent of any such materials.

III. Project Setting

The Tennis Courts locus is within a level to gently sloping area south of a 20th century comfort station, southeast of the historic Van Cortlandt House, and immediately southwest of the Tennis Courts (Figure 1; Photograph 1). The majority of this location is covered with grass or exposed soil and trees are present adjacent to, or just within, the north, east, and west APE boundaries. Subsurface utility lines and manholes are also present within this area.

The Lake House locus is a sloping grassy hillside located to the east of the paved roundabout at the terminus of the Van Cortlandt Park roadway (Figure 1; Photograph 2). A subsurface drainage line with associated manholes runs along the northern boundary of the APE in this location.

The Riverdale Stables locus is a grassy field located to the west and north of the Riverdale Stables buildings and grounds (Figure 1; Photograph 3). This location had been the location a low-lying area between two tributaries of Tibbets Brook. Historically, this area was described as graded in some locations with much of the central area used as a dumping ground for ash fill in the early 20th century. A subsurface drainage line runs northeast-southwest between the stables parking lot and the grassy field.

IV. Results of the Field Investigation

The archaeological excavations in all three loci were conducted in December 2023. Prior to the initiation of fieldwork, HPI contacted LPC and the Tribal representatives to provide them with the testing start date. The archaeological field testing was undertaken and/or supervised by a Registered Professional Archaeologist (RPA) and a Registered Archaeologist (RA). HPI performed all work and recorded all archaeological activities according to the approved Work Plan.

Archaeological testing entailed excavating a total of 48 Shovel Tests (STs), including judgmentally placed STs and Array STs. Within each testing locus, the archaeologists encountered relatively uniform stratigraphy, which was often characterized by disturbed soil strata. All STs measured 40 to 50 centimeters in diameter and were excavated to either undisturbed non-artifact bearing subsoil or were terminated due to obstructions that prevented further soil removal. Stratigraphy was noted to establish context and integrity as well as to further ascertain whether any potential *in situ* cultural resources or features were extant. A complete record of each ST's stratigraphy is included as Appendix A. The recovered artifacts were processed in the laboratory and an inventory catalog is included as Appendix B.

Below is a discussion of the results of excavation within each of the Test Areas.

Tennis Courts Locus

A standard grid of Shovel Tests (STs) at 30ft intervals was laid out across the APE, using the chain link fence surrounding the Tennis Courts at the northeast corner of the APE as the datum and baseline (Figure 5). The initial ST at the northeast corner of the grid was laid out 30ft south of the datum. The ST was placed just south of the east-west drainage line that had been previously tested and the remainder of the STs were placed to the south and west of the initial ST (Greenhouse Consultants, Inc. 1996). During the investigation of this locus, Dr. Jeffrey Bendremer, THPO for the Stockbridge-Munsee, visited the site and the team.

For the current project, a total of 24 STs were placed within the grid. Additionally, 10 Array units were also explored. All the STs examined were excavated to the depth of proposed disturbance, to sterile soils, or to an impassable obstruction. Only six of the initial STs investigated had clear undisturbed strata, primarily toward the center and southern portion of this locus (Table 1; Appendix A; Photograph 4).

Table 1. Typical Undisturbed Stratigraphy in Tennis Courts Locus as represented in ST 90S90W.

| Level/ Horizon | Depths inbs/cmbs | Description |
|-------------------|---------------------------|---|
| 1/A | 0-11in/ 0-28cm | Dark brown (10YR 3/3) sandy clay loam |
| 2/B | 11-28.3 in/ 28-72cm | Yellowish brown (10YR 5/6) sandy clay loam |
| 3/C | 28.3-31-5 in/ 72-80 cm | Pale brown (10YR6/3) coarse sand with some small stones |

The remainder of the STs exhibited evidence of the grading and/or filling activity that occurred in this grassy area in association with the installation of utilities, paths, the tennis courts, various plantings, and likely for the creation of the relatively level grassy lawn (Table 2; Appendix A; Photograph 5).

Table 2. Typical Disturbed Stratigraphy in Tennis Courts Locus as represented in ST 150S30W.

| Level/ Horizon | Depths inbs/cmbs | Description |
|-------------------|-----------------------------|---|
| 1/A1 | 0-12.2inbs/ 0-31cmbs | Dark brown (10YR 3/3) sandy clay loam |
| 2/A2 | 12.2-15.7inbs/ 31-40cmbs | Dark brown (10YR 3/3) mottled with yellowish brown (10YR 5/6) sandy clay loam |
| 3/B | 15.7-26inbs/ 40-66cmbs | Yellowish brown (10YR 5/6) sandy clay loam |
| 4/C | 26-30.7inbs/ 66-78cmbs | 10YR6/3 pale brown compact fine sand |

In a few test pits, the B-horizon was not present, leaving modern topsoil and/or fill over the C-horizon.

In two of the STs, a 20th century gravel path was noted just below the surface (STs 60S30W, 60S0W). The gravel became more compact with larger rocks causing obstructions to hand excavation. In one unit a stone surface was exposed. Probing around the ST found that it did not extend further than one foot to the north and less than a foot to the west. The ST was expanded where the north end to the stones was identified (Photograph 6). Investigation beneath a section of the stones recovered modern machine-made bottle fragments 4.5 in (11 cm) below the stones in a same mottled soil noted in many of the surrounding STs (Appendices A and B). This collection of stones appears to be a remnant of an unknown 20th century activity.

As mentioned above, only two precontact artifacts were recovered from the upper modern or mottled strata in the Tennis Courts locus. Initially a quartz biface was recovered from ST 120S0W in a mottled stratum that also contained a white unidentified plastic fragment (Figure 5; Photograph 7a and 7b). This unit was at the eastern edge of the APE. Although the quartz was of poor quality and recovered in the A2 horizon along with modern plastic, there was some evidence that it had been worked. An array of STs was placed around the positive ST (at 3' and 9') within the APE. In one of the array units (120S0W Array 9S), a chert flake was recovered (Photographs 8 and 9a and 9b). This artifact was also recovered from the A-horizon, along with several small concrete fragments. Although these two precontact artifacts were not recovered in the B-horizon, four additional array STs were investigated and no other precontact artifacts were recovered.

The modern disturbance in this locus, including the grading and filling associated with the installation of the tennis courts, numerous utilities, plantings, and likely for the creation of the relatively level grassy lawn were also likely the reason that so few older artifacts were recovered from the STs. Only a few fragments of hand blown dark green bottle glass, salt glazed stoneware, whiteware, a metal button, and a single pipe stem were recovered that date to the period prior to the 20th century (Photographs 10 -13). These artifacts were typically mixed in with modern artifacts

(Appendix B). In contrast, numerous modern artifacts (modern machine made bottle glass, many from beer bottles, as well as small pieces of plastic and a 1946 penny) were recovered in almost all of the STs. This appears to be also the case for the previous excavations that took place in 1993 and 1996 in the area of the Tennis Courts (Rothschild and Matthews 1993; Greenhouse Consultants 1996; Bankoff and Winter 2005).

No precontact or early historic features were identified during the excavation of the Tennis Courts locus. Only two precontact artifacts were recovered; both found in association with modern artifacts. In addition, only scattered historic artifacts were recovered; all were found mixed with modern artifacts. The presence of both the older and more recent artifacts in the same strata appears to confirm the 20th century disturbance across the entire locus.

Lake House Locus

The Lake House APE is comprised of a small area on the hillside at the end of the paved roundabout at the terminus of the Van Cortlandt Park roadway (Figure 6). This location also had a significant amount of disturbance due to the installation of the roundabout, a paved pathway, and a large drainage line with associated manholes. A datum was placed in the location where the current drainage line intersects the curb. Four STs were placed judgmentally within the APE, as close to 50' intervals as possible. All of the STs examined were excavated to the depth of proposed disturbance, to sterile soils, or to an impassable obstruction. As anticipated, excavation did indicate that this area was disturbed (Appendix A). The strata identified recorded the presence of topsoil over fill in all of the STs (Table 3).

Table 3. Typical Stratigraphy in Lake House Locus as represented by ST J4.

| Level/ Horizon | Depths inbs/cmbs | Description |
|---------------------------|-----------------------------|---|
| 1/Topsoil | 0-3.9 inbs/ 0-10 cmbs | Dark brown (10YR 3/3) sandy clay loam |
| 2/Fill | 3.9-5.9 inbs/ 10-15 cmbs | Dark grayish brown (10YR 4/2) coarse sandy clay loam with cobbles, brick fragments, and some larger rocks |
| 3/Fill | 5.9-18.1 inbs/ 15-46 cmbs | Very dark grayish brown (10YR3/2) coarse sand with large stones |

All of the STs that were examined were terminated due to the presence of the larger rocks in the fill (Appendix A; Photograph 14). Modern plastic and bottle glass were noted, but not collected. ST J3 had a few more artifacts that included anthracite coal, glass fragments, a nail and a piece of redware. No evidence of an intact historical surface or undisturbed stratigraphy was identified. Excavation confirmed that this small locus had been disturbed.

Riverdale Stables Locus

The Riverdale Stables locus had historically been the location a low-lying area between two tributaries of Tibbets Brook. This area was described as being graded in some locations with much of the area later used as a dumping ground for ash fill in the 20th century. The field methodology for this locus was to excavate a series of large-interval (approximately 100 feet) or judgmentally placed shovel tests to confirm disturbance. Nine STs were placed on a grid in the central portion of the APE, where no obvious surface disturbance, slopes, or utilities were present (Figure 7). One additional ST was investigated near the adjacent parking area. STs were excavated to the depth of the planed work or until there was an obstruction. Each of the STs examined in this locus displayed very deep ash/coal fill strata with gravel, rocks, and 20th century artifacts (Table 4; Photographs 15 and 16; Appendices A and B).

During excavation unidentified slag, asphalt, and concrete fragments were noted but not collected. Each of the STs examined contained a large number of artifacts (Appendix B). The collection appears to date to the first half of the 20th century. In fact, several of the historical artifacts recovered date specifically to the 1920s and 1930s (Appendix B). Among the assemblage are 22 architectural fragments (window glass and nails), 93 food related ceramic fragments, 108 food related glass fragments (bottles and vessels), 4 electrical fragments (light bulbs and porcelain) and 14 medicine bottle fragments (Photographs 17-20). Of the eleven small personal items recovered are a brass compact, milk glass vessel fragments, and a marble (Photographs 22-23).

Table 4. Typical Stratigraphy in Riverdale Stables Locus as represented by ST 100N100W.

| Level/ Horizon | Depths inbs/cmbs | Description |
|---------------------------|------------------------------|--|
| 1/Topsoil | 0-10.2 inbs/ 0-26cmbs | Dark brown (10YR 3/3) sandy loam |
| 2/Fill | 10.2-33.1 inbs/ 26-84cmbs | Gray (10YR 6/1) coal ash mottled with dark grayish brown (10YR 4/2) gravelly coarse sandy clay loam with artifacts, asphalt, and rocks |

No features or precontact artifacts were identified at the Riverdale Stables locus. Instead, the presence of deep ash/coal strata with rocks and artifacts across the entire APE confirms the historical description of the filling that took place in this locus.

V. Conclusions and Recommendations

Field testing found that the APE within two of the three loci did not possess any precontact deposits. Only two precontact artifacts were recovered from the upper modern strata in the Tennis Courts locus. This is likely due to the prior disturbance caused by land manipulation and the introduction of underground utilities (e.g., electric and water), to the Tennis Courts locus during the 20th century. Similarly, all historic deposits in the Tennis Courts locus were found in disturbed soils or mixed with modern material. In both the Lake House and Riverdale Stables loci extensive disturbance and/or filling was identified during the field investigation. Additional testing is not recommended for archaeological resources within the APE for all three of the project loci.

VI. Bibliography

Bankoff, H. Arthur and Frederick A. Winter

1991 *Van Cortlandt House Excavations, 1990 and 1991*. Brooklyn College CUNY, Brooklyn, New York.

1993 *Excavations and Archaeological Tests on the site of the Proposed Tennis Courts at Van Cortlandt Park*. Report submitted to NYC Department of Parks and Recreation.

Greenhouse Consultants, Inc.

1996 *Stage IB Archaeological Survey of The Tennis Courts Project, Van Cortlandt Park, The Bronx, New York*. Prepared for Fredante Construction Corporation.

Historical Perspectives, Inc.

2023 *Archaeological Testing Work Plan Van Cortlandt Park Green Infrastructure at the Tennis Courts, Lake House, and Riverdale Stables, Bronx, New York*. Prepared for the City of New York Department of Parks and Recreation.

Landmarks Preservation Commission (LPC)

2018 *Landmarks Preservation Commission Guidelines for Archaeological Work in New York City*.

Rothschild, Nan A. and Christopher N. Matthews

1993 *Phase IA-IB Archaeological Investigations of the Proposed Area for the Construction of Six Tennis Courts on the Parade Grounds of Van Cortlandt Park, The Bronx, New York*.



Archaeological Field Investigation
 Van Cortlandt Park Green Infrastructure at the
 Tennis Courts, Lake House, and Riverdale Stables
 Bronx, New York 10463
 Parts of Block 5900, Lots 1 and 150



Figure 1. Project sites on Yonkers N.Y-N.J. 7.5 Minute quadrangle (U.S.G.S. 2019).

Site - Van Cortlandt Park Tennis Courts

DPR Property ID: X092
 Broadway, Van Cortlandt Park S



Key

- Proposed Drainage Structure
- Proposed Drain
- Subsurface Storage
- TDA
- Existing Tree CRZ
- Boring Location

| SITE ID | |
|-------------------------|------------------------|
| CONTRIBUTARY AREA IN SF | VOLUME CAPTURED IN GAL |
| 092B | 39,553 SF / 50,984 GAL |



Van Cortlandt Park Green Infrastructure | Tennis Courts Schematic Proposal

Archaeological Field Investigation
 Van Cortlandt Park Green Infrastructure at the Tennis Courts, Lake House, and Riverdale Stables
 Bronx, New York 10463
 Parts of Block 5900, Lots 1 and 150



Figure 2. Schematic Proposal for the Tennis Courts Locus (Source: Parks 2022).

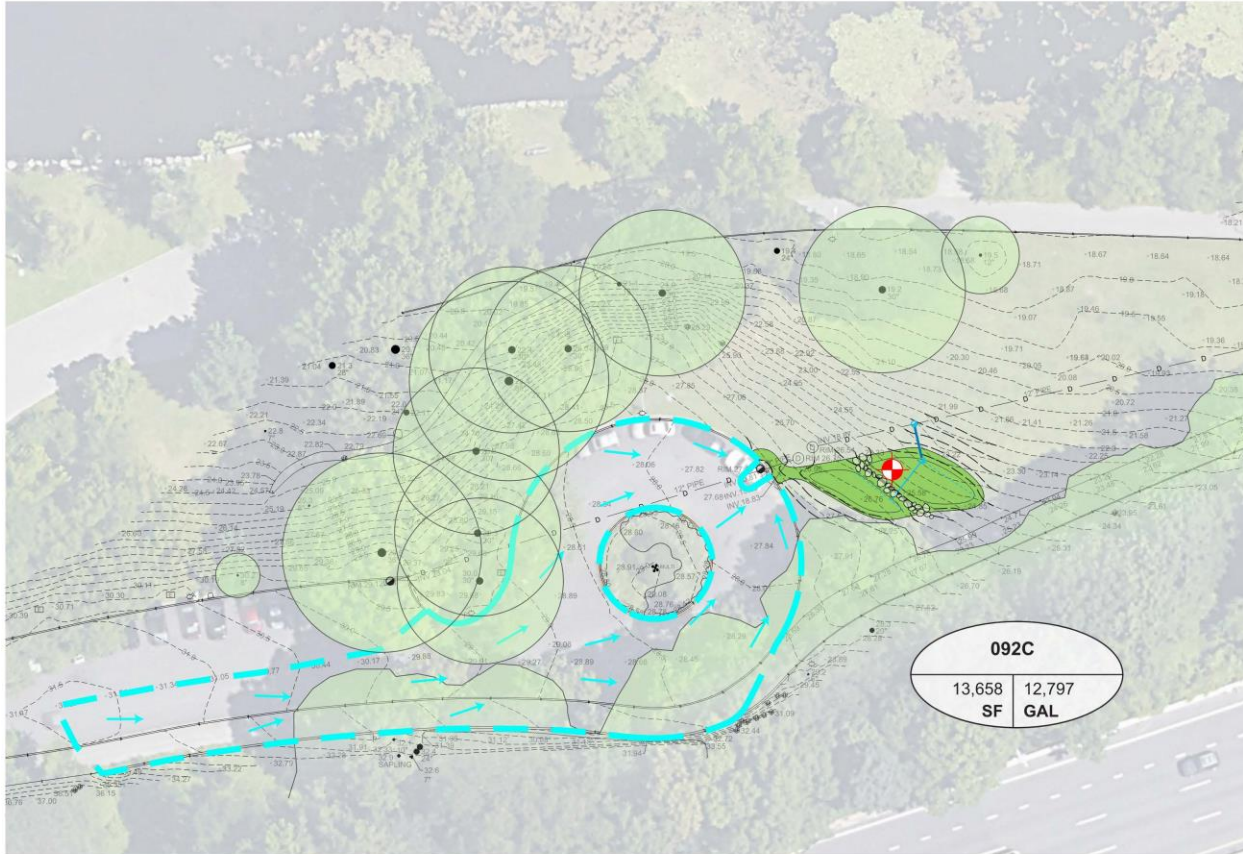
Site - Van Cortlandt Lake House

DPR Property ID: X092
 Van Cortlandt Park South, Broadway

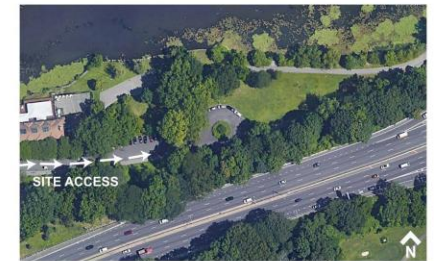


Key

- Existing Tree CRZ / Dripline
- Existing Drainage Structure
- TDA
- Surface Flow Direction
- Proposed Rain Garden
- Proposed Drainage Structure
- Proposed Drain
- Boring Location



| SITE ID | |
|-------------------------------|------------------------------|
| CONTRIBUTORY AREA IN SF | VOLUME CAPTURED IN GAL |



Van Cortlandt Park Green Infrastructure | Lake House Schematic Proposal

Archaeological Field Investigation
 Van Cortlandt Park Green Infrastructure at the Tennis Courts, Lake House, and Riverdale Stables
 Bronx, New York 10463
 Parts of Block 5900, Lots 1 and 150



Figure 3. Schematic Proposal for the Lake House Locus (Source: Parks 2022).

Site - Riverdale Stables

DPR Property ID: X092
Mosholu Avenue, Broadway



| | |
|-----------|------------|
| 092A | |
| 59,631 SF | 67,024 GAL |

Key

- Existing Trees
- Proposed Rain Gardens DEP Funded
- Proposed Grading DEP Funded
- Proposed Tree Plantings Tree Replacement Funds
- Proposed Path Parks Funded
- TDA
- Boring Location

| SITE ID | |
|-------------------------|------------------------|
| CONTRIBUTORY AREA IN SF | VOLUME CAPTURED IN GAL |

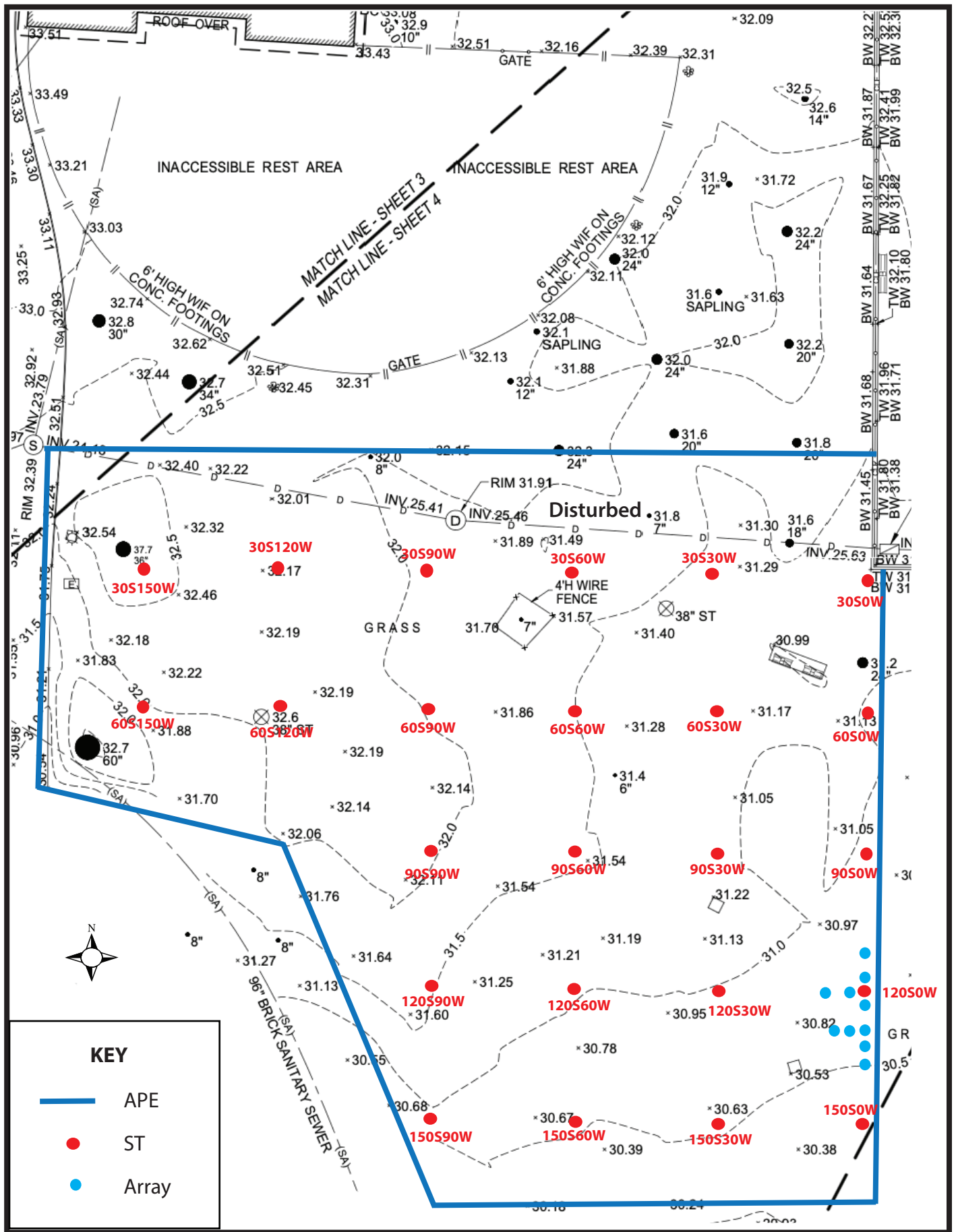


Van Cortlandt Park Green Infrastructure | Riverdale Stables Schematic Proposal

Archaeological Field Investigation
Van Cortlandt Park Green Infrastructure at the Tennis Courts, Lake House, and Riverdale Stables
Bronx, New York 10463
Parts of Block 5900, Lots 1 and 150



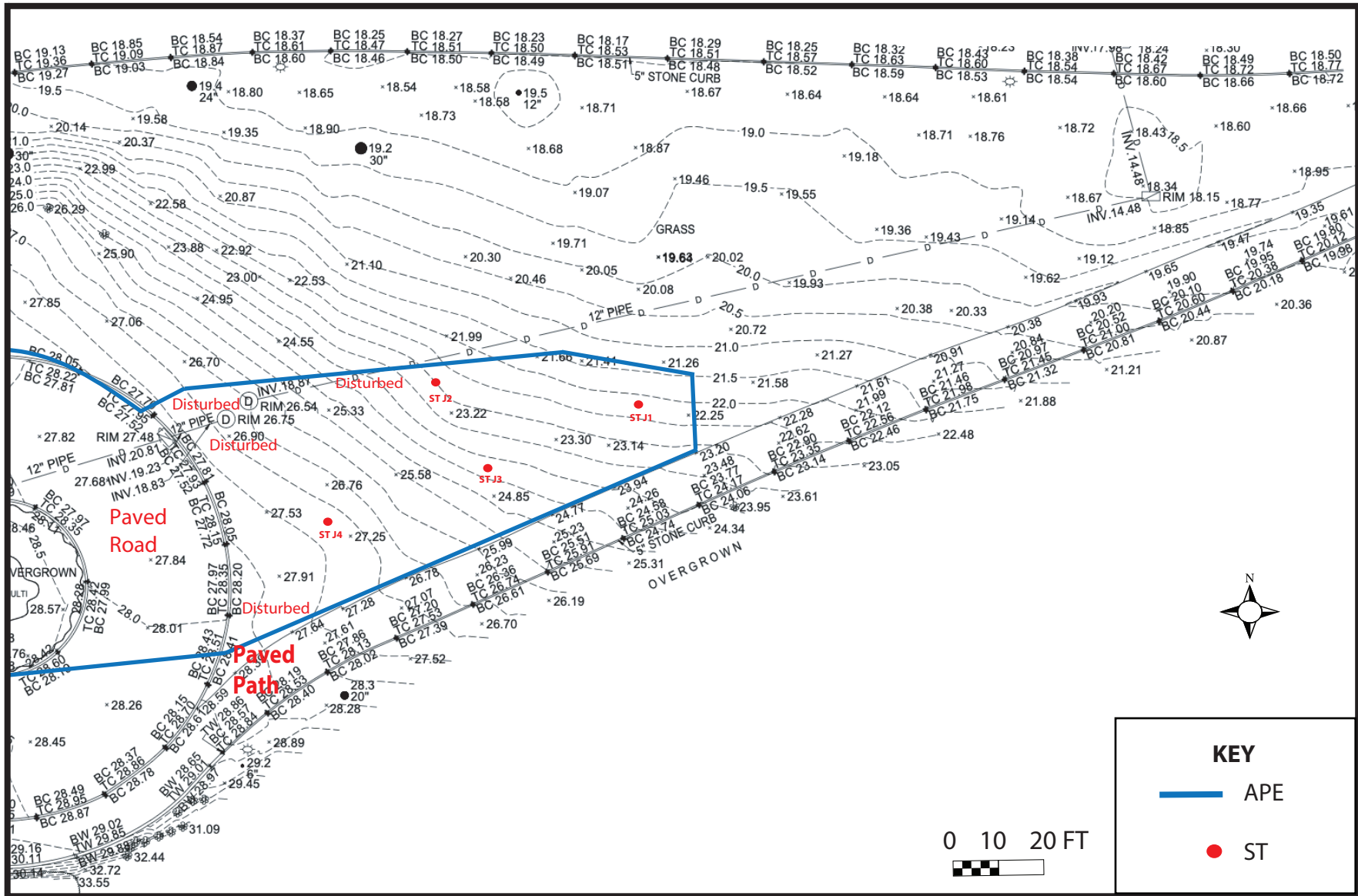
Figure 4. Schematic Proposal for the Riverdale Stables Locus (Source: Parks 2022).



Archaeological Field Investigation
 Van Cortlandt Park Green Infrastructure at the
 Tennis Courts, Lake House, and Riverdale Stables
 Bronx, New York 10463
 Parts of Block 5900, Lots 1 and 150



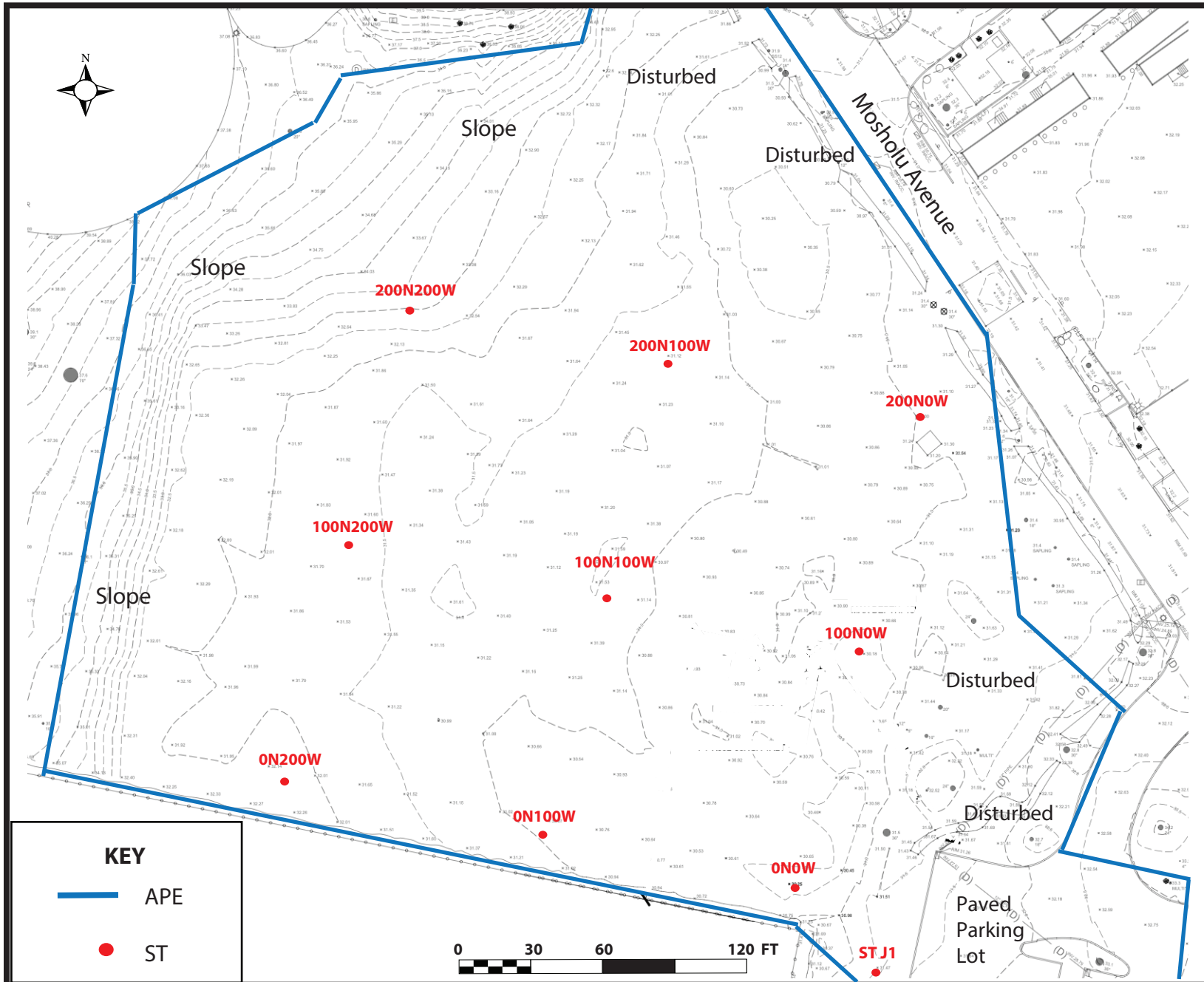
Figure 5. Location of Shovel Tests (ST) at the Tennis Courts (Parks 2022, HPI 2024).



Archaeological Field Investigation
 Van Cortlandt Park Green Infrastructure at the
 Tennis Courts, Lake House, and Riverdale Stables
 Bronx, New York 10463
 Parts of Block 5900, Lots 1 and 150



Figure 6. Location of Shovel Tests (STs) at the Lake House (Parks 2022, HPI 2024).



Archaeological Field Investigation
 Van Cortlandt Park Green Infrastructure at the Tennis Courts, Lake House, and Riverdale Stables
 Bronx, New York 10463, Parts of Block 5900, Lots 1 and 150



Figure 7. Location of Shovel Tests (STs) at the Riverdale Stables (Parks 2022, HPI 2024).



Photograph 1. The Tennis Courts Locus, Facing North.



Photograph 2. The Lake House Locus, Facing East.



Photograph 3. The Riverdale Stables Locus, Facing Southwest.



Photograph 4. Stratigraphy at the Tennis Courts Locus, ST S90W90.



Photograph 5. Disturbed Strata Observed in ST S120W0 Array 9W at the Tennis Courts Locus.



Photograph 6. Collection of surface stones from ST 30S150W.



Photograph 7A. Quartz biface and unidentified plastic fragment recovered from ST 120S0W.



Photograph 7A. Reverse side of Quartz biface.



Photograph 8. Stratigraphy in ST S120W0, Array 9S at the Tennis Courts Locus.



Photograph 9A. Chert Flake Recovered from ST 120S0W Array 9S.



Photograph 9A. Reverse of Chert Flake.



Photograph 10. Dark Green Hand Blown Bottle Base Fragments from STs 120S0W, Array 3S and 105S30W.



Photograph 11. Salt-glazed Stoneware recovered with Unidentified Plastic in ST 150S30W.



Photograph 12. Decorative Metal Button Fragment found with Pull-top Fragment in ST 150S30W.



Photograph 13. Smoking Pipe Stem and Anthracite Coal Fragments Recovered from ST 150S0W.



Photograph 14. ST J2 at the Lake House Locus. Note rocks and bricks in the base of the ST.



Photograph 15. ST N200W200 at the Riverdale Stables Locus.



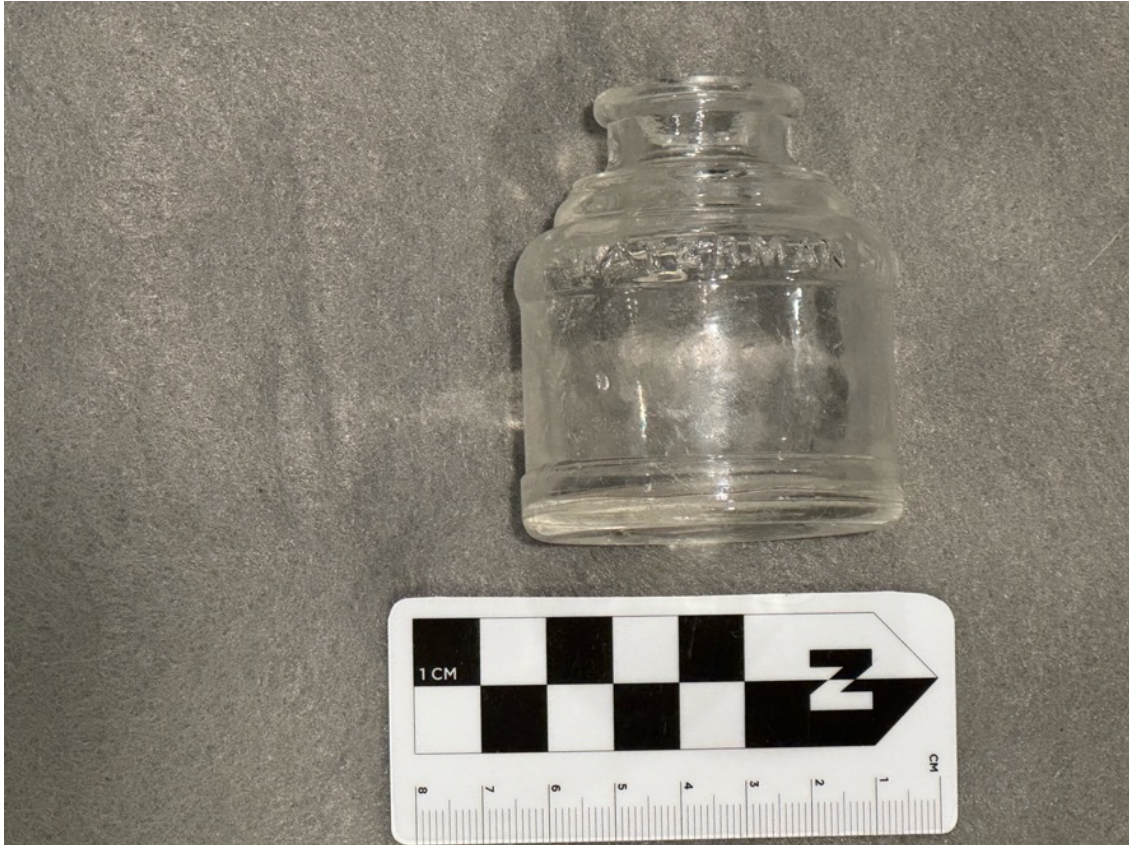
Photograph 16. ST J1 at the Riverdale Stables Locus.



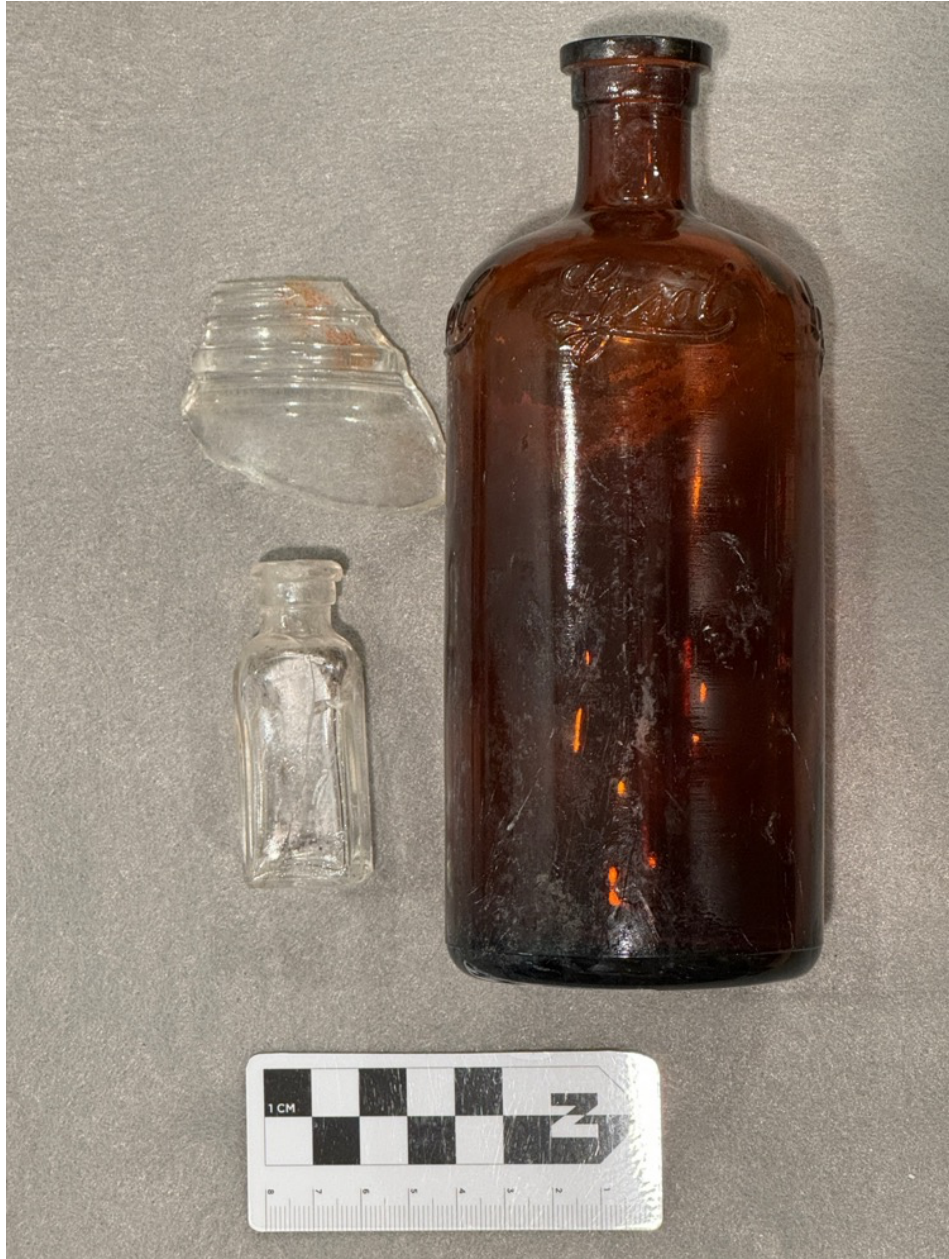
Photograph 17. Fragments of a pitcher recovered from ST N100W200 at the Riverdale Stables Locus.



Photograph 18. Selection of bottle fragments recovered from ST N200W200 at the Riverdale Stables Locus.



Photograph 19. Waterman's Ink bottle recovered from ST N200W100 at the Riverdale Stables Locus.



Photograph 20. Jar Rim, Medicine Bottle, and Lysol Bottle (right) recovered from ST N100W200 at the Riverdale Stables Locus.



Photograph 21. Ceramics from ST N100W200 at the Riverdale Stables Locus.
Note the horse on the small pitcher (top).



Photograph 22. Light bulb recovered from ST N100W200 at the Riverdale Stables Locus.



Photograph 23. Marble and bottle top recovered from ST J1 at the Riverdale Stables Locus.



Photograph 24. Metal Compact recovered from ST N100W200 at the Riverdale Stables Locus.

| Area/Unit Coordinates/ Judgemental | Surface Elevation | Array | Level | Horizon | Depth (in) | Depth (cm) | Soil Color | Soil Description | Cultural Material | Comments/Reason for Termination |
|--|----------------------|-------|-------|-------------|------------|---------------|--|-------------------------|--------------------------------|---|
| Tennis Courts (TC) | | | | | | | | | | |
| TC 30S, 0W | 31 ft NAVD88 | --- | 1 | A | 0-10.6 | 0-27 | 10YR3/3 dark brown | SA CL LO | modern/historic | |
| | | | 2 | B | 10.6-21.7 | 27-55 | 10YR5/6 yellowish brown | SA CL LO | NCM | |
| | | | 3 | C | 21.7-24.4 | 55-62 | 10YR6/3 pale brown | coarse SA | NCM | sterile subsoil |
| TC 30S, 30W | 31.4 ft NAVD88 | --- | 1 | Fill 1 | 0-7.6 | 0-70 | 10YR3/4 dark yellowish brown | loose coarseSALO | modern | |
| | | | 2 | Fill 2 | 7.6-36.2 | 70-92 | 10YR5/6 yellowish brown | coarse SA | modern- asphalt (discarded) | terminal depth |
| TC 30S, 60W | 31.5 ft NAVD88 | --- | 1 | Topsoil | 0-7.5 | 0-19 | 10YR3/2 very dark grayish brown | compact CL LO | modern- bottle glass | |
| | | | 2 | Mixed Fill | 7.5-27.2 | 19-69 | 10YR5/6 yellowish brown | compact Cl coarse SA | modern- asphalt (discarded) | NCM from 25cmbs, compaction impasse |
| TC 30S, 90W | 31.9 ft NAVD88 | --- | 1 | Topsoil | 0-8.7 | 0-22 | 10YR3/2 very dark grayish brown | compact CL LO | modern | |
| | | | 2 | Mixed Fill | 8.7-24.8 | 22-63 | 10YR5/6 yellowish brown | compact CL coarse SA | modern- asphalt (discarded) | compaction impasse |
| TC 30S, 120W | 32.17 ft NAVD88 | --- | 1 | Topsoil | 0-6.3 | 0-16 | 10YR3/2 very dark grayish brown | SA CL LO | modern | |
| | | | 2 | Gravel Fill | 6.3-10.2 | 16-26 | 10YR3/3 dark brown | gravelly SA CL LO | NCM | |
| | | | 3 | Fill | 10.2-29.9 | 26-76 | 10YR5/6 yellowish brown | compact CL coarse SA | modern | |
| | | | 4 | C | 29.9-31.5 | 76-80 | 10YR6/3 pale brown | CL SA | NCM | sterile subsoil |
| TC 30S, 150W | 32.5 ft NAVD88 | --- | 1 | Topsoil | 0-10.2 | 0-26 | 10YR3/3 dark brown | coarse SA LO | modern; historic - cut bone | ST expanded to 45x85cm in order to uncover unidentified stone surface, section of surface removed to excavate below |
| | | | 2 | A2/Fill | | 26-42 | 10YR3/3 dark brown mottle with 10YR5/6 yellowish brown | SA CL LO | modern | |

| Area/Unit Coordinates/ Judgemental | Surface Elevation | Array | Level | Horizon | Depth (in) | Depth (cm) | Soil Color | Soil Description | Cultural Material | Comments/Reason for Termination |
|--|----------------------|-------|-------|---------|------------|---------------|------------------------------------|--------------------------|-------------------------------|---|
| | | | 3 | C | | 42-56 | 10YR6/4 light yellowish brown | gravelly SA | NCM | compaction impasse |
| TC 60S, 0W | 31.13 ft NAVD88 | -- | 1 | Fill | 10.2-11 | 0-28 | 10YR3/1 very dark gray | gravelly coarse SA LO | NCM | gravel/stone impasse- possible remnants of path behind tennis court area, compact gravel impasse |
| TC 60S, 30W | 31.2 ft NAVD88 | -- | 1 | Fill | 0-8.7 | 0-22 | 10YR3/1 very dark gray | gravelly coarse SA LO | NCM | gravel/stone impasse- possible remnants of path behind tennis court area; rock impasse |
| TC 60S, 60W | 31.5 ft NAVD88 | -- | 1 | A | 8.7-12.6 | 0-32 | 10YR3/3 dark brown | SA CL LO | NCM | |
| | | | 2 | B | 12.6-30.7 | 32-78 | 10YR5/6 yellowish brown | SA CL LO | NCM | |
| | | | 3 | C | 30.7-33.2 | 78-84 | 10YR6/3 pale brown | coarse SA | NCM | sterile subsoil |
| TC 60S, 90W | 32 ft NAVD88 | -- | 1 | A | 0-7.9 | 0-20 | 10YR3/3 dark brown | SA CL LO | modern | |
| | | | 2 | B | 7.9-28.3 | 20-72 | 10YR5/6 yellowish brown | SA CL LO | NCM | stone impasse |
| TC 60S, 120W | 32.6 ft NAVD88 | -- | 1 | Topsoil | 0-4.7 | 0-12 | 10YR3/2 very dark grayish brown | SA CL LO | modern | ST is 2m south of large stump |
| | | | 2 | Fill 1 | 4.7-15 | 12-38 | 10YR4/6 dark yellowish brown | SI SA with pebbles | NCM | Fill possibly related to nearby lamps |
| | | | 3 | Fill 2 | 15-25.2 | 38-64 | 10YR6/4 light yellowish brown | SA | NCM | |
| TC 60S, 150W | 32 ft NAVD88 | -- | 1 | Topsoil | 0-10.2 | 0-26 | 10YR3/2 very dark grayish brown | SA CL LO | NCM | ST offset 2ft north, 2ft east |
| | | | 2 | Fill | 10.2-32.3 | 26-82 | 10YR6/4 light yellowish brown | SA | modern | stone/root impasse |
| TC 90S, 0W | 30.9 ft NAVD88 | -- | 1 | A | 0-11.4 | 0-29 | 10YR3/3 dark brown | SA CL LO | modern- refuse (discarded) | |
| | | | 2 | B | 11.4-29.1 | 29-74 | 10YR5/6 yellowish brown | SA CL LO | NCM | stone impasse |
| TC 90S, 30W | 31.2 ft NAVD88 | -- | 1 | A | 0-12.6 | 0-32 | 10YR3/3 dark brown | SA CL LO | modern- refuse (discarded) | |

| Area/Unit Coordinates/ Judgemental | Surface Elevation | Array | Level | Horizon | Depth (in) | Depth (cm) | Soil Color | Soil Description | Cultural Material | Comments/Reason for Termination |
|--|----------------------|-------|-------|---------|------------|---------------|--|---------------------|---|------------------------------------|
| | | | 2 | B | 12.6-37 | 32-94 | 10YR5/6 yellowish brown | SA CL LO | NCM | terminal depth |
| TC 90S, 60W | 31.54 ft NAVD88 | -- | 1 | A | 0-7.9 | 0-20 | 10YR3/3 dark brown | SA CL LO | modern | |
| | | | 2 | A2 | 7.9-8.7 | 20-22 | 10YR3/3 dark brown mottle with 10YR5/6 yellowish brown | SA CL LO | historic | |
| | | | 3 | B | 8.7-29.9 | 22-76 | 10YR5/6 yellowish brown | SA CL LO | NCM | |
| | | | 4 | C | 29.9-32.3 | 76-82 | 10YR6/3 pale brown | CL coarse SA | NCM | sterile subsoil |
| TC 90S, 90W | 32 ft NAVD88 | -- | 1 | A | 0-11 | 0-28 | 10YR3/3 dark brown | SA CL LO | modern fragments - plastic (discarded) | ST photo taken |
| | | | 2 | B | 11-28.3 | 28-72 | 10YR5/6 yellowish brown | SA CL LO | NCM | |
| | | | 3 | C | 28.3-31.5 | 72-80 | 10YR6/3 pale brown | CL SA | NCM | sterile subsoil |
| TC 120S, 0W | 30.9 ft NAVD88 | -- | 1 | A | 0-7.9 | 0-20 | 10YR3/3 dark brown | SA CL LO | modern- plastic, glass | |
| | | | 2 | A2 | 7.9-15.7 | 20-40 | 10YR3/3 dark brown mottle with 10YR5/6 yellowish brown | SA CL LO | historic; precontact | |
| | | | 3 | B | 15.7-33.1 | 40-84 | 10YR5/6 yellowish brown | SA CL LO | NCM | |
| | | | 4 | C | 33.1-34.3 | 84-87 | 10YR6/3 pale brown | CL coarse SA | NCM | sterile subsoil |
| TC 120S, 0W | 30.9 ft NAVD88 | 3N | 1 | A | 0-10.2 | 0-26 | 10YR3/3 dark brown | SA CL LO | modern- glass | |
| | | | 2 | B | 10.2-29.1 | 26-74 | 10YR5/6 yellowish brown | SA CL LO | NCM | |
| | | | 3 | C | 29.1-32.3 | 74-82 | 10YR6/3 pale brown | coarse SA | NCM | sterile subsoil |
| TC 120S, 0W | 31 ft NAVD88 | 9N | 1 | A | 0-7.9 | 0-20 | 10YR3/3 dark brown | SA CL LO | modern- bottle glass, metal | |
| | | | 2 | A2 | 7.9-15.4 | 20-39 | 10YR3/3 dark brown mottle with 10YR5/6 yellowish brown | SA CL LO | historic- stoneware ceramic | |
| | | | 3 | B | 15.4-25.6 | 39-65 | 10YR5/6 yellowish brown | SA CL LO | NCM | |
| | | | 4 | C | 25.6-30.7 | 65-78 | 10YR6/3 pale brown | CL coarse SA | NCM | sterile subsoil |
| TC 120S, 0W | 30.9 ft NAVD88 | 3S | 1 | A | 0-6.3 | 0-16 | 10YR3/3 dark brown | SA CL LO | modern- concrete (discarded), brick fragments | |

| Area/Unit Coordinates/ Judgemental | Surface Elevation | Array | Level | Horizon | Depth (in) | Depth (cm) | Soil Color | Soil Description | Cultural Material | Comments/Reason for Termination |
|--|----------------------|-----------|-------|---------|------------|---------------|--|---------------------|--|------------------------------------|
| | | | 2 | A2 | 6.3-15.4 | 16-39 | 10YR3/3 dark brown mottle with 10YR5/6 yellowish brown | SA CL LO | historic | |
| | | | 3 | B | 15.4-28.3 | 39-72 | 10YR5/6 yellowish brown | SA CL LO | NCM | |
| | | | 4 | C | 8.3-31.5 | 72-80 | 10YR6/3 pale brown | CL coarse SA | NCM | sterile subsoil |
| TC 120S, 0W | 30.8 ft NAVD88 | 9S | 1 | A | 0-6.3 | 0-16 | 10YR3/3 dark brown | SA CL LO | modern- concrete (discarded); precontact flake | ST photo taken |
| | | | 2 | A2 | 6.3-10.2 | 16-26 | 10YR3/3 dark brown mottle with 10YR5/6 yellowish brown | SA CL LO | NCM | |
| | | | 3 | B | 10.2-22.8 | 26-58 | 10YR5/6 yellowish brown | SA CL LO | NCM | |
| | | | 4 | C | 22.8-27.6 | 58-70 | 10YR6/3 pale brown | CL coarse SA | NCM | sterile subsoil |
| TC 120S, 0W | 30.8 ft NAVD88 | 9S- 3W | 1 | A | 0-4.7 | 0-12 | 10YR3/3 dark brown | SA CL LO | NCM | |
| | | | 2 | A2 | 4.7-12.6 | 12-32 | 10YR3/3 dark brown mottle with 10YR5/6 yellowish brown | SA CL LO | historic- stoneware ceramic, nail | |
| | | | 3 | B | 12.6-28 | 32-74 | 10YR5/6 yellowish brown | SA CL LO | NCM | |
| | | | 4 | C | 28-32.3 | 74-82 | 10YR6/3 pale brown | CL coarse SA | NCM | sterile subsoil |
| TC 120S, 0W | 30.82 ft NAVD88 | 9S- 6W | 1 | A | 0-5.5 | 0-14 | 10YR3/3 dark brown | SA CL LO | modern | |
| | | | 2 | B | 5.5-23.2 | 14-59 | 10YR5/6 yellowish brown | SA CL LO | NCM | |
| | | | 3 | C | 23.2-29.5 | 59-75 | 10YR6/3 pale brown | CL coarse SA | NCM | sterile subsoil |
| TC 120S, 0W | 30.6 ft NAVD88 | 12S | 1 | A | 0-8.3 | 0-21 | 10YR3/3 dark brown | SA CL LO | modern- bottle caps (discarded) | |
| | | | 2 | B | 8.3-22 | 21-56 | 10YR5/6 yellowish brown | SA CL LO | NCM | |
| | | | 3 | C | 22-28.3 | 56-72 | 10YR6/3 pale brown | CL coarse SA | NCM | sterile subsoil |
| TC 120S, 0W | 30.5 ft NAVD88 | 15S | 1 | A | 0-7.1 | 0-18 | 10YR3/3 dark brown | SA CL LO | modern | |

| Area/Unit Coordinates/ Judgemental | Surface Elevation | Array | Level | Horizon | Depth (in) | Depth (cm) | Soil Color | Soil Description | Cultural Material | Comments/Reason for Termination |
|--|----------------------|-------|-------|---------|------------|---------------|--|------------------------------|---|------------------------------------|
| | | | 2 | B | 7.1-26.8 | 18-68 | 10YR5/6 yellowish brown | SA CL LO | NCM | |
| | | | 3 | C | 26.8-29.9 | 68-76 | 10YR6/3 pale brown | CL coarse SA | NCM | sterile subsoil |
| TC 120S, 0W | 30.85 ft NAVD88 | 3W | 1 | A | 0-7.1 | 0-18 | 10YR3/3 dark brown | SA CL LO | modern- plastics (discarded), wire nails, glass | |
| | | | 2 | A2 | 7.2-11.8 | 18-30 | 10YR3/3 dark brown mottle with 10YR5/6 yellowish brown | SA CL LO | historic- nail | |
| | | | 3 | B | 11.8-31.5 | 30-80 | 10YR5/6 yellowish brown | SA CL LO | NCM | |
| | | | 4 | C | 31.5-33.9 | 80-86 | 10YR6/3 pale brown | CL coarse SA | NCM | sterile subsoil |
| TC 120S, 0W | 30.86 ft NAVD88 | 9W | 1 | A | 0-5.5 | 0-14 | 10YR3/3 dark brown | SA CL LO | modern | ST photo taken |
| | | | 2 | A2 | 5.5-18.1 | 14-46 | 10YR3/3 dark brown mottle with 10YR5/6 yellowish brown | SA CL LO | historic- glass, brick fragments | |
| | | | 3 | B | 18.1-27.6 | 46-70 | 10YR5/6 yellowish brown | SA CL LO | NCM | |
| | | | 4 | C | 27.6-31.9 | 70-81 | 10YR6/3 pale brown | CL coarse SA | NCM | sterile subsoil |
| TC 120S, 30W | 31 ft NAVD88 | -- | 1 | A | 0-5.5 | 0-14 | 10YR3/3 dark brown | SA CL LO | NCM | |
| | | | 2 | A2 | 5.5-16.5 | 14-42 | 10YR3/3 dark brown mottle with 10YR5/6 yellowish brown | SA CL LO | historic- glass, ceramics, nail | |
| | | | 3 | B | 16.5-21.7 | 42-55 | 10YR5/6 yellowish brown | SA CL LO | NCM | |
| | | | 4 | C | 21.7-26.4 | 55-67 | 10YR6/3 pale brown | Cl coarse SA with cobbles | NCM | sterile subsoil |
| TC 120S, 60W | 31.1 ft NAVD88 | -- | 1 | A | 0-9.4 | 0-24 | 10YR3/3 dark brown | SA CL LO | NCM | |
| | | | 2 | B | 9.4-31.5 | 24-80 | 10YR5/6 yellowish brown | SA CL LO | NCM | |
| | | | 3 | C | 31.5-33.1 | 80-84 | 10YR6/3 pale brown | CL coarse SA | NCM | sterile subsoil |
| TC 120S, 90W | 31.5 ft NAVD88 | --- | 1 | A | 0-9.1 | 0-23 | 10YR3/3 dark brown | SA CL LO | modern- bottle glass | |

| Area/Unit Coordinates/ Judgemental | Surface Elevation | Array | Level | Horizon | Depth (in) | Depth (cm) | Soil Color | Soil Description | Cultural Material | Comments/Reason for Termination |
|--|----------------------|-------|-------|------------|------------|---------------|--|-------------------------------------|---|---|
| | | | 2 | B | 9.1-29.1 | 23-74 | 10YR5/6 yellowish brown | SA CL LO | NCM | |
| | | | 3 | C | 29.1-30.7 | 74-78 | 10YR6/3 pale brown | CL coarse SA | NCM | sterile subsoil |
| TC 150S, 0W | 30.4 ft NAVD88 | -- | 1 | A | 0-5.9 | 0-15 | 10YR3/3 dark brown | SA CL LO | modern- glass, button | |
| | | | 2 | A2 | 5.9-13.4 | 15-34 | 10YR3/3 dark brown mottle with 10YR5/6 yellowish brown | SA CL LO | historic- pipe stem, anthracite coal | |
| | | | 3 | B | 13.4-29.9 | 34-76 | 10YR5/6 yellowish brown | SA CL LO | NCM | |
| | | | 4 | C | 29.931.5 | 76-80 | 10YR6/3 pale brown | CL coarse SA | NCM | sterile subsoil |
| TC 150S, 30W | 30.6 ft NAVD88 | -- | 1 | A | 0-12.2 | 0-31 | 10YR3/3 dark brown | SA CL LO | modern- slag, metal, bottle glass, penny | |
| | | | 2 | A2 | 12.2-15.7 | 31-40 | 10YR3/3 dark brown mottle with 10YR5/6 yellowish brown | SA CL LO | modern- plastic, bottle glass, metal; historic- bottle glass, stoneware ceramic, nail | |
| | | | 3 | B | 15.7-26 | 40-66 | 10YR5/6 yellowish brown | SA CL LO | NCM | |
| | | | 4 | C | 26-30.7 | 66-78 | 10YR6/3 pale brown | CL coarse SA | NCM | sterile subsoil |
| TC 150S, 60W | 30.6 ft NAVD88 | -- | 1 | A | 0-9.8 | 0-25 | 10YR3/3 dark brown | SA CL LO | modern- metal | |
| | | | 2 | B | 9.8-31.5 | 25-80 | 10YR5/6 yellowish brown | SA CL LO | NCM | |
| | | | 3 | C | 31.5-33.9 | 80-86 | 10YR6/3 pale brown | CL coarse SA | NCM | sterile subsoil |
| TC 150S, 90W | 30.7 ft NAVD88 | -- | 1 | Fill | 0-33.5 | 0-85 | 10YR5/3 brown | SI fine SA | modern- bottle glass, plastic, nail, slag | disturbed |
| RIVERDALE STABLES (RS) | | | | | | | | | | |
| RS 0N, 0W | 30.25 ft NAVD88 | -- | 1 | Mixed Fill | 0-18.1 | 0-46 | 10YR6/1 gray with 10YR4/2 dark grayish brown | compact gravelly coarse SA LO | mixed modern/historic; slag, asphalt discarded | high amounts of coal ash, asphalt impasse |

| Area/Unit Coordinates/Judgemental | Surface Elevation | Array | Level | Horizon | Depth (in) | Depth (cm) | Soil Color | Soil Description | Cultural Material | Comments/Reason for Termination |
|-----------------------------------|-------------------|-------|-------|------------|------------|------------|--|-------------------------------|---|--|
| RS 0N, 100W | 30.9 ft NAVD88 | -- | 1 | Topsoil | 0-2.4 | 0-6 | 10YR3/3 dark brown | SA LO | NCM | |
| | | | 2 | Mixed Fill | 2.4-31.5 | 6-80 | 10YR6/1 gray with 10YR4/2 dark grayish brown | compact gravelly coarse SA LO | mixed modern/historic; slag, asphalt discarded | high amounts of coal ash, terminal depth |
| RS 0N, 200W | 32 ft NAVD88 | -- | 1 | Mixed Fill | 0-16.5 | 0-42 | 10YR6/1 gray with 10YR5/2 grayish brown | compact gravelly coarse SA LO | mixed modern/historic; slag, asphalt, concrete discarded | high amounts of coal ash, concrete/asphalt impasse |
| RS 100N, 0W | 30.18 ft NAVD88 | -- | 1 | Topsoil | 0-2 | 0-5 | 10YR3/3 dark brown | SA LO | NCM | |
| | | | 2 | Mixed Fill | 2-31.9 | 5-81 | 10YR6/1 gray with 10YR4/2 dark grayish brown | compact gravelly coarse SA LO | mixed modern/historic; slag, anthracite coal discarded | high amounts of coal ash, terminal depth |
| RS 100N, 100W | 31.45 ft NAVD88 | -- | 1 | Fill | 0-10.2 | 0-26 | 10YR5/6 yellowish brown | SA | NCM | ST photo taken |
| | | | 2 | Mixed Fill | 10.2-33.1 | 26-84 | 10YR6/1 gray with 10YR4/2 dark grayish brown | compact gravelly coarse SA LO | mixed modern/historic; slag, asphalt unidentified metal discarded | high amounts of coal ash, terminal depth |
| 100N, 200W | 31.65 ft NAVD88 | -- | 1 | Topsoil | 0-5.5 | 0-14 | 10YR3/3 dark brown | SA LO | mixed modern/historic-glass, slag | |
| | | | 2 | Mixed Fill | 5.5-36.2 | 14-92 | 10YR6/1 gray with 10YR5/2 grayish brown | compact gravelly coarse SA LO | mixed modern/historic; slag, anthracite discarded | high amounts of coal ash, terminal depth |
| 200N, 0W | 31 ft NAVD88 | -- | 1 | Topsoil | 0-8.7 | 0-22 | 10YR2/2 very dark brown | SA CL LO | NCM | |

| Area/Unit Coordinates/ Judgemental | Surface Elevation | Array | Level | Horizon | Depth (in) | Depth (cm) | Soil Color | Soil Description | Cultural Material | Comments/Reason for Termination |
|--|----------------------|-------|-------|------------|------------|---------------|--|-------------------------------------|--|---|
| | | | 2 | Mixed Fill | 8.7-24.4 | 22-62 | 10YR6/1 gray with 10YR4/2 dark grayish brown | gravelly coarse SA LO | mixed modern/historic; slag, furnace scale discarded | high amounts of coal ash, stone impasse |
| 200N, 100W | 31.1 ft NAVD88 | -- | 1 | Mixed Fill | 0-18.9 | 0-48 | 10YR4/2 dark grayish brown with 10YR6/1 gray | gravelly coarse SA LO | mixed modern/historic; slag, furnace scale discarded | high amounts of coal ash, stone impasse |
| 200N, 200W | 33 ft NAVD88 | -- | 1 | Topsoil | 0-4.7 | 0-12 | 10YR3/3 dark brown | SA LO | modern- plastic, glass | |
| | | | 2 | Mixed Fill | 4.7-27.6 | 12-70 | 10YR6/1 gray with 10YR5/2 grayish brown | gravelly coarse SA LO | mixed modern/historic; slag, furnace scale discarded | ST photo taken, high amounts of coal ash |
| | | | 3 | Fill | 27.6-33.5 | 70-85 | 10YR6/1 gray | gravelly coarse SA LO | mixed modern/historic; slag, furnace scale discarded | high amounts of coal ash, terminal depth |
| RS J1 | 31.47 ft NAVD88 | -- | 1 | Mixed Fill | 0-33.9 | 0-86 | 10YR6/1 gray with 10YR4/2 dark grayish brown | compact gravelly coarse SA LO | mixed modern/historic; slag, furnace scale discarded | ST photo taken, high amounts of coal ash, terminal depth |
| Lake House (LH) | | | | | | | | | | |
| LH J1 | 22.25 ft NAVD88 | -- | 1 | Topsoil | 0-2.4 | 0-6 | 10YR3/3 dark brown | SA CL LO | modern- brown bottle glass (noted only) | |
| | | | 2 | Fill | 2.4-16.5 | 6-42 | 10YR4/2 dark grayish brown | coarse SA CL LO with cobble | NCM | stone impasse |
| LH J2 | 23 ft NAVD88 | -- | 1 | Fill | 0-17.7 | 0-45 | 10YR4/2 dark grayish brown | coarse SA CL LO with cobble | modern - bottle glass (noted only), brick and metal pipe (42cmbs) at base | ST photo taken, stone/brick impasse |

| Area/Unit Coordinates/ Judgemental | Surface Elevation | Array | Level | Horizon | Depth (in) | Depth (cm) | Soil Color | Soil Description | Cultural Material | Comments/Reason for Termination |
|--|----------------------|-------|-------|---------|------------|---------------|------------------------------------|-----------------------------------|--|------------------------------------|
| LH J3 | 23.75 ft NAVD88 | -- | 1 | Fill | 0-23.2 | 0-59 | 10YR4/2 dark grayish brown | coarse SA CL LO with cobble | modern | stone impasse |
| LH J4 | 27.25 ft NAVD88 | -- | 1 | Topsoil | 0-3.9 | 0-10 | 10YR3/3 dark brown | SA CL LO | modern- bottle glass (noted only) | large stone in north half of ST |
| | | | 2 | Fill 1 | 3.9-5.9 | 10-15 | 10YR5/6 yellowish brown | SA CL LO | modern- plastic, wrappers (noted only) | |
| | | | 3 | Fill 2 | 5.9-18.1 | 15-46 | 10YR3/2 very dark grayish brown | coarse SA CL LO | NCM | stone impasse |

CL - Clay Sand

NCM - No Cultural Material

LO - Loam SI - Silt

Appendix B. Catalog of Recovered Artifacts

| Area | Grid Coordinates/ Judgemental | Array | Level | Quantity | Functional Group | Class | Material | Type | Object | Part | Description |
|---------------|----------------------------------|-------|-------|----------|------------------|-----------|-------------|----------------------|---------------|----------|---|
| Tennis Courts | 30S, 0W | -- | 1 | 1 | food related | ceramic | earthenware | whiteware | vessel | fragment | white glazed interior with light blue glazed exterior |
| | | | | 1 | food related | glass | aqua-tint | machinemade | bottle | fragment | small fragment, some opaque weathering, modern |
| | | | | 1 | food related | glass | dark green | hand-blown | bottle | fragment | heavy scratching |
| | | | | 2 | food related | glass | brown | machinemade | bottle | fragment | modern beer bottle fragments |
| | | | | 3 | food related | glass | colorless | | vessel | fragment | 3 fragments form base of glass stem, slight iridescent weathering |
| | | | | 5 | domestic | ceramic | earthenware | redware | vessel | fragment | unglazed, likely flower pot fragment |
| Tennis Courts | 30S, 30W | -- | 1 | 1 | architectural | ceramic | earthenware | red | brick | fragment | small brick or large tile, side stamped: "MADE IN U.S.A.", top stamped partial: "X-... EHM" |
| | | | | 1 | food related | ceramic | earthenware | whiteware | vessel | fragment | no decoration |
| | | | | 1 | food related | ceramic | porcelain | soft-paste porcelain | vessel | fragment | blue decorated exterior, moderate weathering of glaze |
| | | | | 1 | food related | glass | colorless | machinemade | bottle | fragment | base fragment, ridged edge |
| | | | | 1 | food related | glass | colorless | machinemade | bottle | fragment | linear embossment on exterior |
| | | | | 1 | food related | glass | colorless | machinemade | bottle | fragment | parial embossment "E" |
| | | | | 2 | food related | glass | green | machinemade | vessel | fragment | modern beer bottle fragments |
| Tennis Courts | 30S, 60W | -- | 1 | 1 | food related | glass | colorless | machinemade | bottle | fragment | decorative dimpled surface |
| | | | | 1 | food related | glass | green | machinemade | bottle | fragment | modern beer bottle fragment |
| Tennis Courts | 30S, 90W | -- | 1 | 1 | food related | glass | colorless | indeterminate | vessel | fragment | small thin fragment |
| | | | | 1 | indeterminate | glass | colorless | machinemade | bottle | fragment | very small scratched fragment |
| | | | | 1 | unaffiliated | synthetic | plastic | indeterminate | indeterminate | fragment | textured green plastic with white stripe |
| | | | | 1 | unaffiliated | metal | iron | indeterminate | indeterminate | fragment | small rectangular strip, mild corrosion |

Appendix B. Catalog of Recovered Artifacts

| Area | Grid Coordinates/ Judgemental | Array | Level | Quantity | Functional Group | Class | Material | Type | Object | Part | Description |
|---------------|----------------------------------|-------|-------|----------|------------------|-----------|-------------|-----------------|---------------|----------|--|
| Tennis Courts | 30S, 120W | -- | 1 | 1 | food related | glass | brown | machinemade | bottle | fragment | modern beer bottle fragment |
| | | | | 1 | food related | metal | aluminum | machinemade | bottlecap | complete | "Corona Extra" modern beer bottle cap |
| | | | | 1 | domestic | ceramic | earthenware | redware | vessel | fragment | unglazed, likely flower pot fragment |
| | | | | 1 | industrial | inorganic | asphalt | | asphalt | fragment | asphalt sample |
| | | -- | 3 | 1 | food related | metal | aluminum | machinemade | pull tab | fragment | partial pull tab from can |
| | | | | 1 | industrial | inorganic | asphalt | machinemade | asphalt | fragment | asphalt sample |
| | | | | 1 | unaffiliated | glass | colorless | indeterminate | indeterminate | fragment | very small and thin, possible lightbulb fragment |
| Tennis Courts | 30S, 150W | -- | 1 | 1 | architectural | ceramic | earthenware | red | brick | fragment | very small fragment |
| | | | | 1 | food remains | organic | bone | mid-size mammal | epiphysis | fragment | cut edge indicates butchering |
| | | | 2 | 3 | food related | glass | green | machinemade | bottle | fragment | |
| Tennis Courts | 60S, 90W | -- | 1 | 1 | food related | glass | colorless | machinemade | vessel | fragment | very small fragment |
| | | | | 1 | food related | glass | green | machinemade | bottle | fragment | modern beer bottle fragment |
| Tennis Courts | 60S, 150W | -- | 2 | 1 | architectural | ceramic | earthenware | red | tile | fragment | ridged bottom |
| | | | | 1 | unaffiliated | glass | colorless | machinemade | indeterminate | fragment | heavily weathered, possibly melted bottle fragment |
| Tennis Courts | 90S, 60W | -- | 1 | 1 | architectural | metal | iron | cut | nail | complete | square shaft visible through heavy corrosion, square head is possible hand-wrought |
| | | | | 1 | architectural | glass | aqua-tint | flat | window | fragment | very small thin fragment, |
| | | | | 1 | food related | glass | brown | machinemade | bottle | fragment | modern beer bottle fragment |
| | | | | 1 | food related | glass | green | machinemade | bottle | fragment | modern beer bottle fragment |
| | | | | 2 | food related | glass | white | indeterminate | vessel | fragment | very thin fragments, some corrosion |
| | | | | 1 | domestic | ceramic | earthenware | redware | vessel | fragment | unglazed, likely flower pot fragment |
| | | | | 1 | personal | synthetic | plastic | | game piece | fragment | small circular piece |

Appendix B. Catalog of Recovered Artifacts

| Area | Grid Coordinates/ Judgemental | Array | Level | Quantity | Functional Group | Class | Material | Type | Object | Part | Description |
|---------------|----------------------------------|-------|-------|----------|------------------|-----------|-------------|---------------|---------------|----------|---|
| | | --- | 2 | 1 | architectural | metal | iron | cut | nail | complete | square shaft and head visible through heavy corrosion |
| | | | | 1 | architectural | metal | iron | wire | nail | fragment | head absent, heavily corroded shaft |
| | | | | 1 | food related | ceramic | earthenware | whiteware | vessel | fragment | very small fragment, undecorated |
| | | | | 1 | food related | glass | dark green | indeterminate | vessel | fragment | small fragment, fractured with opaque weathering |
| | | | | 1 | domestic | ceramic | earthenware | redware | vessel | fragment | unglazed, likely flower pot fragment |
| Tennis Courts | 90S, 90W | --- | 1 | 1 | architectural | ceramic | earthenware | red | brick | fragment | no markings |
| | | | | 2 | domestic | ceramic | earthenware | redware | vessel | fragment | unglazed, likely flower pot fragment |
| Tennis Courts | 120S, 0W | --- | 1 | 1 | food related | glass | brown | machinemade | bottle | fragment | modern beer bottle fragment |
| | | | | 1 | personal | synthetic | plastic | indeterminate | bead | complete | very small pink bead |
| | | | 2 | 1 | precontact | lithic | quartz | | biface | complete | removal scars on each side, orange tint material |
| | | | | 1 | unaffiliated | synthetic | plastic | indeterminate | indeterminate | fragment | thin white plastic fragment |
| | | | 3 | 1 | food remains | organic | shell | oyster | shell | half | |
| | | 3N | 1 | 2 | architectural | glass | colorless | flat | window | fragment | unweathered |
| | | | | 1 | food related | glass | colorless | machinemade | vessel | fragment | light scratching |
| | | 9N | 1 | 1 | architectural | glass | aqua-tint | indeterminate | window | fragment | thin fragment, light scratching |
| | | | | 1 | food related | ceramic | stoneware | | vessel | fragment | salt glazed exterior, light brown slip interior |
| | | | | 1 | food related | glass | colorless | machinemade | vessel | fragment | unweathered |
| | | | | 1 | food related | metal | aluminum | machinemade | pull tab | fragment | partial pull tab from can |
| | | | | 1 | personal | metal | steel | machinemade | button | fragment | small button with pressed design |
| | | | | 1 | unaffiliated | other | | anthracite | coal | fragment | small thin fragment |
| | | 3S | 2 | 2 | food related | glass | dark green | hand-blown | bottle | fragment | thick base fragment |
| | | 9S | 1 | 1 | precontact | lithic | chert | | flake | complete | greenish Onondaga variety material |

Appendix B. Catalog of Recovered Artifacts

| Area | Grid Coordinates/ Judgemental | Array | Level | Quantity | Functional Group | Class | Material | Type | Object | Part | Description |
|---------------|----------------------------------|-------|-------|----------|------------------|-----------|-------------|---------------|---------------|----------|--|
| | | 9S-3W | 2 | 1 | architectural | metal | iron | cut | nail | complete | square shaft and head visible through heavy corrosion, head is possibly hand-wrought |
| | | | | 1 | food related | ceramic | stoneware | | vessel | fragment | salt glazed exterior with blue decoration, light brown slip interior |
| | | 9S-6W | 1 | 2 | domestic | ceramic | earthenware | redware | vessel | fragment | unglazed, likely flower pot fragments |
| | | 15S | 1 | 1 | architectural | metal | iron | machinemade | screw | complete | Phillips-head, some corrosion |
| | | | | 2 | food related | glass | colorless | machinemade | bottle | fragment | light scratching |
| | | 3W | 1 | 2 | architectural | metal | iron | machinemade | screw | complete | Phillips-head, some corrosion |
| | | | 2 | 1 | architectural | metal | iron | cut | nail | complete | square shaft and head visible through heavy corrosion, head is possibly hand-wrought |
| | | 9W | 1 | 2 | architectural | metal | iron | wire | nail | fragment | round heads, corroded |
| | | | | 1 | architectural | metal | iron | wire | nail | fragment | head absent, heavy corrosion |
| | | | | 1 | architectural | metal | iron | wire | indeterminate | fragment | bent corroded wire |
| | | | | 1 | food related | glass | dark green | hand-blown | bottle | fragment | very small thin fragment |
| | | | | 1 | food related | glass | colorless | machinemade | bottle | fragment | unweathered |
| | | | | 1 | food related | glass | colorless | machinemade | bottle | fragment | partial star embossed, unweathered |
| | | | | 1 | food related | ceramic | earthenware | redware | vessel | fragment | interior broken off, exterior unglazed with fine ridged pattern |
| | | | | 1 | food related | metal | aluminum | machinemade | pull tab | complete | pull tab from can |
| | | | | 1 | unaffiliated | synthetic | rubber | machinemade | indeterminate | fragment | wedge-shaped previously white rubber |
| | | | 2 | 1 | architectural | ceramic | earthenware | red | brick | fragment | weathered brick fragment |
| | | | | 1 | food related | glass | colorless | machinemade | bottle | fragment | unweathered |
| | | | | 1 | food related | glass | colorless | indeterminate | vessel | fragment | melting and heat damage |
| Tennis Courts | 120S, 30W | -- | 2 | 1 | architectural | metal | iron | indeterminate | nail | fragment | head absent, heavy corrosion |

Appendix B. Catalog of Recovered Artifacts

| Area | Grid Coordinates/ Judgemental | Array | Level | Quantity | Functional Group | Class | Material | Type | Object | Part | Description |
|---------------|----------------------------------|-------|-------|----------|------------------|---------------|-------------------|---------------|--------------------|----------|--|
| | | | | 1 | architectural | glass | colorless | flat | window | fragment | unweathered |
| | | | | 1 | food related | ceramic | earthenware | whiteware | vessel | fragment | blue decorated exterior |
| | | | | 1 | food related | ceramic | earthenware | whiteware | vessel | fragment | very small thin fragment, no decoration |
| Tennis Courts | 120S, 90W | -- | 1 | 1 | food related | glass | green | machinemade | bottle | fragment | modern beer bottle fragment |
| Tennis Courts | 150S, 0W | -- | 1 | 1 | food related | glass | aqua-tint | machinemade | bottle | fragment | unweathered |
| | | | | 1 | indeterminate | synthetic | plastic | | indeterminate | fragment | fragment |
| | | -- | 2 | 1 | personal | clay | kaolin | smoking pipe | stem | fragment | appears used, unmarked |
| | | | | 1 | sample | organic | coal | anthracite | coal | fragment | unweathered |
| Tennis Courts | 150S, 30W | -- | 1 | 8 | food related | glass | colorless | machinemade | bottle | fragment | base fragments with stippling on center, unweathered |
| | | | | 4 | food related | glass | colorless | machinemade | bottle | fragment | modern beer bottle fragment |
| | | | | 1 | food related | glass | brown | machinemade | bottle | fragment | modern beer bottle fragment |
| | | | | 1 | food related | metal | aluminum | machinemade | pull tab | complete | pull tab from can |
| | | | | 1 | food related | synthetic | plastic | | disposable utensil | fragment | utensil handle fragment |
| | | | | 1 | industrial | glass | N/A | N/A | slag | fragment | heavily heat-damaged material |
| | | | | 1 | personal | metal | copper/zinc alloy | machinemade | coin | complete | wheat penny, year 1946 |
| | | | 2 | 1 | architectural | metal | iron | indeterminate | nail | complete | heavy corrosion prevents identification |
| | | | | 1 | food related | ceramic | stoneware | | vessel | fragment | salt glazed exterior, unglazed interior |
| | | | | 1 | food related | glass | colorless | moldmade | vessel | fragment | unweathered |
| | | | | 2 | food related | glass | colorless | moldmade | vessel | fragment | stippled embossment, unweathered |
| | | | | 4 | food related | glass | dark green | hand-blown | vessel | fragment | base and neck fragments heavy scratching and opaque weathering |
| | | | | 1 | unaffiliated | synthetic | plastic | moldmade | indeterminate | fragment | white rim fragment |
| | | | | 1 | unaffiliated | synthetic | plastic | moldmade | indeterminate | fragment | grey fragment |
| Tennis Courts | 150S, 60W | -- | 1 | 1 | food related | metal/plastic | aluminum | machinemade | seal | fragment | seal from beneath bottle cap |

Appendix B. Catalog of Recovered Artifacts

| Area | Grid Coordinates/ Judgemental | Array | Level | Quantity | Functional Group | Class | Material | Type | Object | Part | Description |
|---------------|----------------------------------|-------|-------|----------|--------------------------|-----------|-------------|-------------|---------------|----------|---|
| | | | | 1 | sample | organic | coal | anthracite | coal | fragment | |
| Tennis Courts | 150S, 90W | -- | 1 | 1 | architectural | metal | iron | cut | nail | fragment | square shaft visible through heavy corrosion, head is possibly hand-wrought |
| | | | | 1 | food related | glass | green | machinemade | bottle | fragment | modern beer bottle fragment |
| | | | | 1 | food related | glass | brown | machinemade | bottle | fragment | base fragment, likely modern beer bottle |
| | | | | 1 | unaffiliated | synthetic | plastic | | indeterminate | fragment | colorless rim fragment |
| Stables | 0N, 0W | -- | 1 | 1 | architectural | metal | iron | machinemade | screw | complete | some corrosion, small with round slotted head |
| | | | | 1 | architectural | glass | colorless | machinemade | window | fragment | some opaque weathering |
| | | | | 1 | food related | glass | brown | machinemade | bottle | fragment | some opaque weathering |
| | | | | 1 | food related / medicinal | glass | colorless | machinemade | bottle | fragment | some opaque weathering, partial embossment: "UNTY" |
| Stables | 0N, 100W | -- | 2 | 1 | architectural | metal | iron | wire | nail | complete | some corrosion, round head |
| | | | | 1 | architectural | glass | aqua-tint | flat | window | fragment | scratches and mild opaque weathering |
| | | | | 6 | food related | ceramic | earthenware | whiteware | vessel | fragment | vessel base fragments, one with partial mark: "MADE" |
| | | | | 3 | food related | ceramic | earthenware | whiteware | vessel | fragment | one piece is partial rim, all undecorated |
| | | | | 1 | food related | ceramic | earthenware | creamware | vessel | fragment | partial base, undecorated |
| | | | | 1 | food related | ceramic | earthenware | whiteware | vessel | fragment | undecorated |
| | | | | 1 | food related | ceramic | earthenware | whiteware | vessel | fragment | yellow glazed interior with decorated green glazed exterior |
| | | | | 1 | food related | glass | colorless | machinemade | bottle | fragment | pitting/scratches and opaque weathering |
| | | | | 1 | food related | glass | colorless | machinemade | bottle | fragment | possible neck fragment |
| | | | | 1 | food related | glass | colorless | machinemade | bottle | fragment | thick partial base, heavy scratching and some opaque weathering |
| | | | | 3 | food related | glass | colorless | machinemade | bottle | fragment | 3 pieces fit to form bead finish bottleneck with cork, slight iridescent weathering |

Appendix B. Catalog of Recovered Artifacts

| Area | Grid Coordinates/ Judgemental | Array | Level | Quantity | Functional Group | Class | Material | Type | Object | Part | Description |
|---------|----------------------------------|-------|-------|----------|------------------|---------|--------------|-------------------------------|-------------------|----------|--|
| | | | | 1 | food related | glass | colorless | machinemade | bottle | fragment | vessel base w/embossed Hazel-Atlas Glass Co.and "5350" on side. Early mark of company (1923-1982), |
| | | | | 1 | food related | glass | colorless | machinemade | jar | complete | small jar with lug type external neck finish, embossed Hazel-Atlas Glass Co. mark (1920s) on base along with "940-2" |
| | | | | 1 | food related | metal | copper alloy | machinemade | spoon | complete | table spoon with decorated handle |
| | | | | 1 | food related | glass | colorless | machinemade | bottle | complete | milk bottle, base embossed with Owens-Illinois Glass Co. mark (company 1929-1960), sides embossed: "1QT 4", "SHEFFIELD" (ca. 1920s) and "REGISTERED" |
| | | | | 1 | medicinal | glass | colorless | machinemade | bottle | complete | large bottle, base embossed with Petrolagar Laboratories makers mark (1941-1950s) |
| | | | | 1 | domestic | metal | iron | machinemade | wheel | complete | small wheel with spoke, heavy corrosion |
| | | | | 1 | electrical | ceramic | porcelain | soft paste (electrical grade) | electrical socket | complete | unglazed porcelain, screw bottom, partial metal rim with illegible embossment |
| | | | | 2 | personal | glass | opaque blue | | vessel | fragment | base fragments with shallow sides, possible ashtray |
| | | | | 1 | unaffiliated | glass | colorless | machinemade | indeterminate | fragment | thick glass, heavy scratching and iridescent weathering |
| Stables | 0N, 200W | -- | 1 | 1 | food related | ceramic | earthenware | whiteware | vessel | fragment | small handle, green sponge painted |
| | | | | 1 | food related | glass | colorless | machinemade | lid | fragment | small lid fragment with molding characteristic of lightning-type closure |
| | | | | 1 | food related | glass | yellow | indeterminate | vessel | fragment | heavily cracked |
| | | | | 1 | food related | glass | colorless | machinemade | bottle | fragment | some opaque weathering, partial embossment: "PY" |

Appendix B. Catalog of Recovered Artifacts

| Area | Grid Coordinates/ Judgemental | Array | Level | Quantity | Functional Group | Class | Material | Type | Object | Part | Description |
|---------|----------------------------------|-------|-------|----------|------------------|---------|---------------------|---------------|---------------|----------|--|
| | | | | 3 | food related | glass | colorless | machinemade | bottle | fragment | ketchup bottle, 3 pieces form base and partial faceted side, base embossed with ca. Owens-Illinois Glass Co. makers mark and "BLUE LABEL KETCHUP"ca. 1920s |
| | | | | 1 | domestic | ceramic | earthenware | redware | vessel | fragment | unglazed, probable flower pot fragment |
| Stables | 100N, 0W | -- | 2 | 1 | architectural | metal | iron | machinemade | indeterminate | fragment | heavy corrosion prevents identification |
| | | | | 1 | architectural | metal | iron | machinemade | indeterminate | fragment | possible keyhole, heavy corrosion prevents identification |
| | | | | 1 | architectural | ceramic | porcelain | soft paste | tile | complete | small hexagonal tile, unglazed |
| | | | | 1 | architectural | ceramic | stoneware | indeterminate | tile | fragment | white glaze |
| | | | | 1 | food related | glass | colorless | moldmade | vessel | fragment | base fragment with embossed "I"- Industrial Glass Co. makers mark (1982-96) |
| | | | | 1 | food related | glass | colorless | moldmade | vessel | fragment | some opaque weathering |
| | | | | 1 | food related | glass | colorless | moldmade | vessel | fragment | partial rim with crosshatched embossment |
| | | | | 3 | food related | glass | white | indeterminate | vessel | fragment | undecorated |
| | | | | 5 | food related | glass | colorless | moldmade | vessel | fragment | pieces fit together to form partial rim with floral embossment and "woodgrain" embossed sides |
| | | | | 5 | food related | glass | white | moldmade | vessel | fragment | pieces fit together to form decoratively embossed partial rim and side |
| | | | | 11 | food related | glass | white and colorless | moldmade | vessel | fragment | pieces fit together to form vessel with ridged sides |
| | | | | 1 | electrical | resin | phenolic | machinemade | socket | complete | possibly part of a light fixture, some corroded copper interior components |

Appendix B. Catalog of Recovered Artifacts

| Area | Grid Coordinates/ Judgemental | Array | Level | Quantity | Functional Group | Class | Material | Type | Object | Part | Description |
|---------|----------------------------------|-------|-------|----------|------------------|---------|-------------|-------------------------------|----------------------|----------|--|
| Stables | 100N, 100W | -- | 2 | 1 | architectural | metal | iron | wire | nail | complete | round head, heavy corrosion |
| | | | | 1 | food related | ceramic | earthenware | whiteware | vessel | fragment | undecorated |
| | | | | 2 | food related | ceramic | porcelain | soft paste | vessel | fragment | blue "Asian motif" transfer print decoration on interior, soft paste |
| | | | | 1 | food related | glass | white | indeterminate | vessel | fragment | undecorated |
| | | | | 1 | food related | glass | colorless | machinemade | bottle | fragment | threaded rim fragment |
| | | | | 1 | food related | glass | colorless | machinemade | bottle | fragment | thick base fragment, partial embossment: "C 2" |
| | | | | 2 | food related | glass | colorless | machinemade | bottle | fragment | faceted vessel side fragments |
| | | | | 2 | food related | glass | brown | machinemade | bottle | fragment | square vessel, one piece partial embossment: "20 oz" |
| | | | | 1 | medicinal | glass | colorless | machinemade | bottle | fragment | base with "SUTAX TRADEMARK" makers mark embossment (drug company) |
| | | | | 2 | domestic | ceramic | earthenware | redware | vessel | fragment | unglazed, one piece is partial base, probable flower pot fragments |
| | | | | 1 | electrical | ceramic | porcelain | soft paste (electrical grade) | electrical insulator | complete | ceramic insulator with some corroded metal components |
| Stables | 100N, 200W | -- | 1 | 1 | architectural | glass | aqua-tint | flat | window | fragment | some scratching and opalescent weathering |
| | | | | 1 | food related | glass | brown | machinemade | bottle | fragment | modern beer-bottle fragment |
| | | | | 1 | food related | glass | colorless | machinemade | bottle | fragment | slight weathering |
| | | | | 1 | food related | glass | colorless | machinemade | vessel | fragment | starburst embossment on exterior |
| | | | | 1 | food related | glass | colorless | machinemade | bottle | fragment | fine stippling on exterior |
| | | | | 1 | food related | glass | colorless | indeterminate | vessel | fragment | thin fragment, clouded |
| | | | | 1 | unaffiliated | glass | colorless | N/A | slag | fragment | amorphous melted glass |
| | | -- | 2 | 1 | architectural | metal | iron | wire | nail | fragment | heavy corrosion, head absent |
| | | | | 1 | architectural | metal | iron | indeterminate | indeterminate | fragment | heavy corrosion prevents identification |
| | | | | 1 | architectural | ceramic | earthenware | whiteware | tile | fragment | glazed surface, unglazed ridged bottom |

Appendix B. Catalog of Recovered Artifacts

| Area | Grid Coordinates/ Judgemental | Array | Level | Quantity | Functional Group | Class | Material | Type | Object | Part | Description |
|------|----------------------------------|-------|-------|----------|------------------|---------|-------------|---------------|--------|----------|--|
| | | | | 1 | architectural | glass | colorless | flat | window | fragment | iridescent weathering |
| | | | | 1 | food related | ceramic | earthenware | whiteware | vessel | fragment | floral embossment |
| | | | | 1 | food related | ceramic | earthenware | whiteware | vessel | fragment | vessel base fragment |
| | | | | 1 | food related | ceramic | porcelain | soft paste | vessel | fragment | rim fragment, green sponge painted interior, undecorated exterior |
| | | | | 1 | food related | ceramic | porcelain | hard paste | vessel | fragment | rim fragment with rose floral transfer print on interior |
| | | | | 2 | food related | ceramic | earthenware | whiteware | vessel | fragment | rim fragments with very faint leaf decoration |
| | | | | 5 | food related | ceramic | earthenware | whiteware | vessel | fragment | brown marbled glaze, symbol stamped on base |
| | | | | 16 | food related | ceramic | earthenware | whiteware | vessel | fragment | fragments of shallow dish with blue annular decoration |
| | | | | 27 | food related | ceramic | earthenware | whiteware | vessel | fragment | fragments of large pitcher with scalloped rim, highly ornamental and colorful floral transfer print with painted gold accents, possibly a soft paste porcelain rather than a whiteware |
| | | | | 1 | food related | glass | colorless | indeterminate | vessel | fragment | possible hand-blown |
| | | | | 1 | food related | glass | colorless | machinemade | bottle | fragment | vessel wall with small molded ridges |
| | | | | 1 | food related | glass | aqua-tint | indeterminate | bottle | fragment | mild opaque weathering |
| | | | | 1 | food related | glass | colorless | machinemade | bottle | fragment | opaque weathering, thick base with embossed Graham Glass Co. makers mark (1912-26) |
| | | | | 1 | food related | glass | colorless | machinemade | bottle | fragment | threaded rim with embossed Owens-Illinois Glass Co. (1954-present) |
| | | | | 1 | food related | glass | colorless | moldmade | bottle | fragment | bottle neck with bead lip |
| | | | | 1 | food related | glass | dark green | indeterminate | bottle | fragment | mild opaque weathering |
| | | | | 1 | food related | glass | light green | moldmade | bottle | fragment | mild opaque weathering |
| | | | | 1 | food related | glass | green | moldmade | bottle | fragment | mild opaque weathering |
| | | | | 2 | food related | glass | colorless | moldmade | bottle | fragment | mild opaque weathering |

Appendix B. Catalog of Recovered Artifacts

| Area | Grid Coordinates/ Judgemental | Array | Level | Quantity | Functional Group | Class | Material | Type | Object | Part | Description |
|---------|----------------------------------|-------|-------|----------|------------------|---------|--------------------|---------------|-----------|----------|--|
| | | | | 2 | food related | glass | colorless | moldmade | jar | fragment | threaded jar rim fragments |
| | | | | 2 | food remains | organic | bone | large mammal | teeth | complete | large teeth |
| | | | | 1 | medicinal | glass | colorless | machinemade | bottle | fragment | small square bottle base embossed with Owens-Illinois Glass Co. makers mark and "ILLINOIS" (late 1920s) |
| | | | | 1 | medicinal | glass | blue | machinemade | bottle | fragment | square bottle fragment, mild opaque weathering |
| | | | | 1 | medicinal | glass | colorless | machinemade | bottle | complete | small square bottle with base embossed: "2-B" |
| | | | | 2 | medicinal | glass | colorless | machinemade | bottle | fragment | square sided bottle with side embossed: "AVC.3 1/2 OZS NET" and base embossed with Owens Bottle Co. makers mark (1919-29) |
| | | | | 1 | domestic | glass | amber | machinemade | bottle | complete | ca. 1910-1920s: "Lysol" bottle; base embossed with Whitall Tatum & Co. makers mark and embossed "BOTTLE MADE IN USA", and "LYSOL INCORPORATED BLOOMFIELD NJ" |
| | | | | 1 | unaffiliated | glass | colorless and pink | N/A | slag | fragment | amorphous melted glass |
| | | | | 1 | electrical | glass | colorless | machinemade | lightbulb | fragment | very small bulb, missing base |
| | | | | 1 | electrical | glass | colorless | machinemade | lightbulb | complete | large bulb, slightly clouded |
| | | | | 1 | personal | ceramic | porcelain | soft paste | vessel | fragment | possible inkwell fragment, painted horses motif on exterior |
| | | | | 1 | personal | metal | brass | machinemade | compact | complete | small makeup compact, faint linear pattern |
| Stables | 200N, 0W | -- | 2 | 1 | architectural | metal | iron | indeterminate | nail | fragment | some corrosion, head absent |
| | | | | 1 | food related | glass | colorless | indeterminate | vessel | fragment | ridged fragment, mild opaque weathering |

Appendix B. Catalog of Recovered Artifacts

| Area | Grid Coordinates/ Judgemental | Array | Level | Quantity | Functional Group | Class | Material | Type | Object | Part | Description |
|---------|----------------------------------|-------|-------|----------|------------------|---------|-------------|---------------|---------------|----------|--|
| | | | | 1 | personal | glass | colorless | machinemade | vessel | fragment | base embossed: "EMPIRE CANDLE WORKS NEW YORK" (ca. 1920s-1930s), faceted sides |
| | | | | 1 | unaffiliated | glass | colorless | indeterminate | indeterminate | fragment | thick flat fragment, mild opaque weathering |
| Stables | 200N, 100W | -- | 1 | 1 | food related | ceramic | earthenware | whiteware | vessel | fragment | scalloped rim fragment with rose floral transfer print |
| | | | | 1 | food related | ceramic | earthenware | whiteware | vessel | fragment | blue painted exterior, indistinct pattern |
| | | | | 1 | food related | ceramic | earthenware | whiteware | vessel | fragment | base fragment, undecorated |
| | | | | 1 | food related | ceramic | earthenware | creamware | vessel | fragment | unglazed interior, undecorated |
| | | | | 2 | food related | ceramic | porcelain | soft paste | vessel | fragment | base fragment with Goa, France makers mark (1900-53) |
| | | | | 1 | food related | glass | colorless | machinemade | bottle | fragment | mild opaque weathering |
| | | | | 1 | food related | glass | dark green | indeterminate | vessel | fragment | small fragment, mild scratching |
| | | | | 1 | food related | glass | green | machinemade | bottle | fragment | mild opaque weathering |
| | | | | 1 | food related | glass | light green | machinemade | bottle | fragment | very faint coloring |
| | | | | 1 | food related | glass | brown | machinemade | bottle | fragment | squared corner fragment |
| | | | | 2 | food related | glass | yellow | machinemade | bottle | fragment | small fragments, slight opaque weathering |
| | | | | 1 | medicinal | glass | brown | machinemade | bottle | fragment | small bottle neck with collared ring finish |
| | | | | 1 | medicinal | glass | colorless | machinemade | bottle | fragment | very small bottle neck with collared ring finish |
| | | | | 1 | medicinal | glass | colorless | machinemade | bottle | fragment | very small square base embossed: "6B" |
| | | | | 1 | domestic | ceramic | earthenware | redware | vessel | fragment | unglazed, possible flower pot fragment |
| | | | | 1 | personal | glass | colorless | moldmade | vessel | fragment | thick-based with shallow sides, possible ashtray |

Appendix B. Catalog of Recovered Artifacts

| Area | Grid Coordinates/ Judgemental | Array | Level | Quantity | Functional Group | Class | Material | Type | Object | Part | Description |
|---------|----------------------------------|-------|-------|----------|------------------|-----------|-------------|-----------------|---------------|----------|--|
| | | | | 1 | personal | glass | colorless | machinemade | bottle | complete | ink bottle, embossed side: "WATERMAN'S INK 20Z", base embossed with Brockway Glass Co. makers mark (1925-ca.1934) and "THIS CONTAINER MADE IN U.S.A., 5" |
| Stables | 200N, 200W | -- | 1 | 1 | food related | glass | colorless | machinemade | vessel | fragment | white painted crown motif exterior |
| | | | | 2 | indeterminate | synthetic | plastic | indeterminate | indeterminate | fragment | red modern plastic |
| | | -- | 2 | 1 | architectural | metal | iron | indeterminate | nail | complete | round head, heavy corrosion |
| | | | | 1 | architectural | metal | iron | indeterminate | nail | fragment | head absent, some corrosion |
| | | | | 1 | architectural | metal | iron | wire | nail | fragment | head absent, some corrosion |
| | | | | 8 | food related | ceramic | earthenware | whiteware | vessel | fragment | fragments are partial base and scalloped rim of same vessel, yellowish glaze with orange transfer print floral decoration |
| | | | | 1 | food related | glass | aqua-tint | machinemade | bottle | fragment | mild opaque weathering |
| | | | | 1 | food related | glass | light green | machinemade | bottle | fragment | base fragment, scratches and mild opaque weathering |
| | | | | 1 | food related | glass | yellow | indeterminate | vessel | fragment | base fragment with floral embossment |
| | | | | 2 | food related | glass | colorless | indeterminate | vessel | fragment | circular etched design on exterior, heavy opaque weathering |
| | | | | 3 | food related | glass | colorless | machinemade | bottle | fragment | mild opaque weathering |
| | | | | 1 | food remains | organic | bone | mid-size mammal | shaft | fragment | broken bone, unidentified mammal |

Appendix B. Catalog of Recovered Artifacts

| Area | Grid Coordinates/ Judgemental | Array | Level | Quantity | Functional Group | Class | Material | Type | Object | Part | Description |
|------|----------------------------------|-------|-------|----------|------------------|---------|-------------|---------------|--------|----------|--|
| | | | | 1 | medicinal | glass | blue | machinemade | bottle | fragment | very small round bottle, side embossed: "EMERSON DRUG CO, BROMO-SELTZER", base embossed: Maryland Glass Corp. makers mark (ca.1921-30s) and "89" |
| | | | | 1 | sample | organic | coal | anthracite | coal | fragment | |
| | | -- | 3 | 1 | architectural | metal | iron | wire | nail | fragment | head absent, heavy corrosion |
| | | | | 1 | architectural | glass | colorless | flat | window | fragment | heavy opaque weathering |
| | | | | 1 | food related | ceramic | earthenware | whiteware | vessel | fragment | base fragment, undecorated |
| | | | | 1 | food related | ceramic | porcelain | hard paste | vessel | fragment | gold and pink annular decoration on exterior |
| | | | | 1 | food related | ceramic | porcelain | hard paste | vessel | fragment | heavy smelting/heat damage, undecorated |
| | | | | 1 | food related | ceramic | earthenware | whiteware | vessel | fragment | heavy heat damage/cracking, partial scalloped rim |
| | | | | 3 | food related | ceramic | earthenware | whiteware | vessel | fragment | fragments are partial base and scalloped rim of same vessel, yellowish glaze with orange transfer print floral decoration |
| | | | | 1 | food related | glass | aqua-tint | indeterminate | vessel | fragment | rim fragment, opaque weathering |
| | | | | 1 | food related | glass | light green | moldmade | vessel | fragment | faceted sides with circular etched pattern |
| | | | | 1 | food related | glass | colorless | machinemade | jar | fragment | partial threaded rim of jar |
| | | | | 1 | food related | glass | colorless | machinemade | jar | fragment | partial wide-mouthed rim |
| | | | | 1 | food related | glass | colorless | indeterminate | vessel | fragment | thick base, possibly hand-blown, opaque weathering |
| | | | | 1 | food related | glass | colorless | machinemade | bottle | fragment | partial base with partial embossment: "& SON" |
| | | | | 1 | food related | glass | colorless | machinemade | bottle | fragment | partial base with illegible embossment |
| | | | | 1 | food related | glass | colorless | machinemade | flask | fragment | partial oval base |

Appendix B. Catalog of Recovered Artifacts

| Area | Grid Coordinates/ Judgemental | Array | Level | Quantity | Functional Group | Class | Material | Type | Object | Part | Description |
|---------|----------------------------------|-------|-------|----------|------------------|-----------|---------------|---------------|---------------|----------|--|
| | | | | 1 | food related | glass | colorless | machinemade | bottle | fragment | slightly melted base embossed with Brockway Glass Co makers mark and "HELLMANN'S BLUE RIBBON REGISTERED" (ca. 1930s) |
| | | | | 2 | food related | glass | yellow | moldmade | vessel | fragment | base and floral embossed rim fragments of shallow dish |
| | | | | 1 | food remains | organic | bone | small bird | epiphysis | fragment | very small bone, complete epiphysis and partial shaft |
| | | | | 2 | medicinal | glass | colorless | machinemade | bottle | complete | split into 2 pieces, small bottle with collared ring finish, side embossed: "<indistinct> i", some opaque weathering |
| | | | | 1 | medicinal | glass | colorless | machinemade | bottle | complete | very small square bottle with collared ring finish, base embossed: "B 7" |
| | | | | 1 | domestic | glass | brown | machinemade | bottle | fragment | small bottle neck with collared ring finish, embossed: "CLOROX" |
| | | | | 2 | domestic | ceramic | earthenware | redware | vessel | fragment | unglazed, possible flower pot fragments |
| | | | | 1 | personal | clay | earthenware | hand-sculpted | marble | complete | tan-bodied with remnants of magenta dye, unglazed |
| | | | | 1 | industrial | glass | N/A | N/A | slag | fragment | heavily burned material |
| | | | | 1 | unaffiliated | glass | blue | indeterminate | indeterminate | fragment | melted and heavily heat-damaged |
| | | | | 1 | unaffiliated | glass | colorless | machinemade | bottle | fragment | small base with embossed spool(?) symbol (unknown maker) |
| | | | | 1 | unaffiliated | metal | iron | machinemade | can | fragment | can rim fragment, corroded |
| | | | | 1 | sample | inorganic | furnace scale | N/A | furnace scale | fragment | |
| Stables | J1 | --- | 1 | 2 | architectural | glass | aqua-tint | machinemade | window | fragment | mild opaque weathered |
| | | | | 1 | food related | ceramic | porcelain | soft paste | vessel | fragment | rim fragment with gold annular decoration on exterior |

Appendix B. Catalog of Recovered Artifacts

| Area | Grid Coordinates/ Judgemental | Array | Level | Quantity | Functional Group | Class | Material | Type | Object | Part | Description |
|------------|----------------------------------|-------|-------|----------|------------------|---------|-------------------------|---------------|---------|----------|--|
| | | | | 1 | food related | ceramic | porcelain | soft paste | vessel | fragment | small fragment, undecorated |
| | | | | 1 | food related | ceramic | earthenware | whiteware | vessel | fragment | undecorated |
| | | | | 1 | food related | glass | white | indeterminate | vessel | fragment | very small thin fragment |
| | | | | 1 | food related | glass | colorless | machinemade | bottle | fragment | thick partial vessel wall |
| | | | | 1 | food related | glass | colorless | machinemade | bottle | fragment | partial vessel wall, partial embossment: "D" |
| | | | | 1 | food related | glass | colorless | machinemade | bottle | fragment | partial vessel wall with deep diamond-shaped molding |
| | | | | 1 | food related | glass | colorless | machinemade | bottle | fragment | partial embossment: "EC. PAT." |
| | | | | 1 | food related | glass | colorless | machinemade | bottle | fragment | partial base with small ridges |
| | | | | 1 | food related | glass | colorless | machinemade | bottle | fragment | partial base embossed with unidentified makers mark: "D" interlocked with "L" inside diamond |
| | | | | 1 | food related | glass | colorless | machinemade | bottle | fragment | partial ovular base, no marks |
| | | | | 1 | food related | glass | colorless | indeterminate | vessel | fragment | thick base fragment |
| | | | | 1 | food related | glass | colorless | machinemade | vessel | fragment | base with illegible embossment |
| | | | | 1 | food related | glass | colorless | machinemade | vessel | fragment | small bottle with threaded lip |
| | | | | 1 | food related | glass | colorless | | stopper | fragment | bottle stopper with circular top |
| | | | | 1 | personal | ceramic | porcelain | soft paste | figure | fragment | fragment of molded object, faint pink paint remnants |
| | | | | 1 | personal | glass | opaque yellow and green | machinemade | marble | complete | yellow and green swirled marble |
| Lake House | J3 | -- | 1 | 1 | architectural | metal | iron | indeterminate | nail | complete | heavy corrosion prevents identification |
| | | | | 1 | food related | glass | colorless | machinemade | bottle | fragment | partial base with stippled edge |
| | | | | 2 | food related | glass | colorless | indeterminate | vessel | fragment | heavy scratching/cracking |
| | | | | 3 | food related | glass | aqua-tint | machinemade | vessel | fragment | vessel wall fragments, some scratching |
| | | | | 1 | domestic | ceramic | earthenware | redware | vessel | fragment | possible flower pot fragment |
| | | | | 1 | sample | organic | coal | anthracite | coal | fragment | |