

4761K

2003 G-house

ARCHAEOLOGICAL TESTING REPORT
100 JAY STREET
BROOKLYN, NEW YORK
BLOCK 53, LOTS 24, 26 AND 27

RECEIVED
ENVIRONMENTAL REVIEW

NOV 18 2003

LANDMARKS PRESERVATION
COMMISSION

prepared for:
The Hudson Companies Inc., LLC
155 Third Street
Brooklyn, New York 11231

prepared by:
Greenhouse Consultants Incorporated
40 Exchange Place, 13th Floor
New York, New York 10005

November 2003

name of
RPA?

of B 53 and 52 Rezoning

244

TABLE OF CONTENTS

	Page
Table of Contents	2
List of Figures	3
List of Plates	4
List of Personnel	5
Introduction	1
Field Methodology	2
Stratigraphic Summary	4
Artifact Processing and Analysis	9
Results	14
Conclusions and Recommendations	15
Bibliography	16

- Appendix 1 Field Record Forms and Context Numbering
- Appendix 2 Artifact Inventory

LIST OF FIGURES

- Figure 1 Location of the project area shown on portion of U.S.G.S. 7.5 minute series Brooklyn, N.Y. quadrangle, 1967, photorevised 1979.
- Figure 2 Locations of Backhoe Trenches 1 through 8 within the project area.
- Figure 3 Plan of Backhoe Trench 1.
- Figure 4 Plan of Backhoe Trench 2.
- Figure 5 Plan of Backhoe Trench 5.

LIST OF PLATES

- | | |
|----------|------------------------------------------------------------------------------|
| Plate 1 | View of excavation of Backhoe Trench 1 looking northeast. |
| Plate 2 | View of Backhoe Trench 1 looking west showing cellar entryway. |
| Plate 3 | View of Backhoe Trench 2 looking south showing privy or dry well. |
| Plate 4 | View of the south section of Backhoe Trench 3. |
| Plate 5 | View of Backhoe Trench 4 looking west. |
| Plate 6 | View of Backhoe Trench 5 looking south with dry well in background. |
| Plate 7 | View of dry well in Backhoe Trench 5 looking east. |
| Plate 8 | Detail of brick drain leading to dry well in Backhoe Trench 5 looking north. |
| Plate 9 | View of the north section of Backhoe Trench 6. |
| Plate 10 | View of the north section of Backhoe Trench 7. |
| Plate 11 | View of the west section of Backhoe Trench 8. |

LIST OF PERSONNEL

William I. Roberts IV	-	Principal Investigator Co-Author
Paula M. Crowley	-	Laboratory Director Co-Author Artifact Analyst Word/Data Processor
William Goldsmith	-	Field Technician
Bruno Carallo, Jr.	-	Backhoe Operator

INTRODUCTION

The 100 Jay Street project area is located in the section of Brooklyn known as DUMBO, or Down Under the Manhattan Bridge Overpass. The project area consists of Lots 24, 26 and 27 on Block 53. The Manhattan Bridge approach passes over Block 53 just west of the project area. See Figure 1.

Two background research reports were prepared for this project by Celia Bergoffen during 2001. The first report covers Lots 3, 6, 21; and 24 through 27 on Block 53. Archaeological testing of Lots 24, 26 and 27 was recommended (Bergoffen 2001:13-16).

Lot 24 had structures at the front and rear of the lot by 1855. Sewers and water lines were available after 1859. An L-shaped yard between the front and rear buildings remained open through time. During the 1860s the Mullen family occupied this lot. They operated a dry-goods store (Bergoffen 2001:9, 13-14). A cistern would be the most likely resource located within this part of Lot 24.

Lot 26 had a house at the front and a shed at the rear of the lot by 1855. Sewers and water lines were also available after 1859. The front building was later extended, but an L-shaped yard remained open through time. Lot 26 was owned and occupied by Mary Ellsinger from 1861 through 1866 (Bergoffen 2001:9, 14). A cistern would be the most likely resource to survive in Lot 26.

Lot 27 had a house on it by 1852. Sewers and water lines were available after 1859. The entire eastern side of the rear yard remained open through time. Lot 27 was occupied by the Widow Cassin and three boarders during the 1850s. Lot 27 was owned by Patrick Creau during 1866 through 1869. It became the property of Mary Ellsinger around 1875 and she owned it through 1886 (Bergoffen 2001:9, 15). A privy would be the most likely type of resource to survive.

The general purpose of archaeological testing is to document the presence or absence of potential prehistoric or historic archaeological resources through the use of physical testing techniques. The expected resources for this block consist of features associated with the nineteenth century residences, including privies, cisterns or wells. Location of these features are expected to be located near the present surface since they were constructed on or cut into this surface during the nineteenth century.

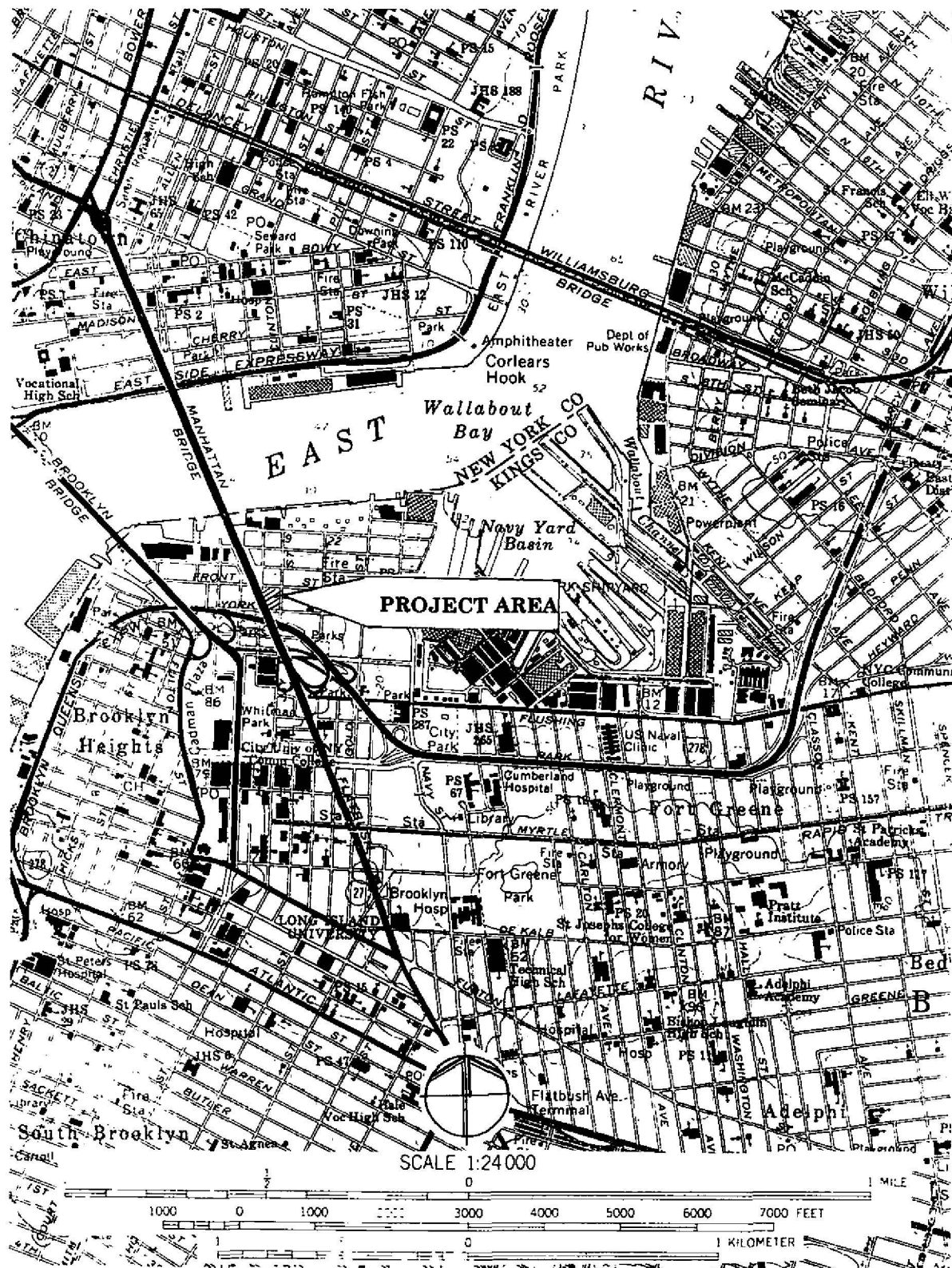


Figure 1 Location of the project area shown on portion of U.S.G.S. 7.5 minute series Brooklyn, N.Y. quadrangle, 1967, photorevised 1979.

FIELD METHODOLOGY

The subsurface archaeological testing at 100 Jay Street, Brooklyn, New York began on September 3, 2003 and was completed September 5, 2003. As stated in the scope-of-work for this testing, the technique used to examine buried deposits was the mechanical excavation of trenches. A total of eight trenches were excavated by backhoe, the results of which were closely monitored by archaeologists. This testing strategy was designed by the principal investigator and approved by the staff of the New York City Landmarks Preservation Commission. See Figure 2 for the locations of the trenches.

All eight backhoe trenches were located as proposed. Measurements were taken from property lines and existing buildings, and the corners of the trenches were painted on the parking lot surface. The backhoe was then used to break and remove the asphalt surface. Excavation proceeded slowly and methodically, under constant supervision of registered professional archaeologists.

The use of mechanical means of excavation expedites the removal of large quantities of fill. A total of approximately 8,592 cubic feet of soil were removed from the trenches, the dimensions of which varied from 14 feet to 42 feet long, 6 to 8 feet wide, and 4.1 to 8.5 feet deep.

Soil samples were selectively removed from the fill of features and the deepest layer encountered. This soil was then screened through ¼-inch mesh in order to recover artifacts. Artifacts were also recovered when they were observed in the trench by directing the backhoe operator to selectively remove them with the backhoe bucket. Soil strata were measured, described, and recorded for all trenches. All trenches were backfilled immediately following excavation and the recording of data.

A total of approximately 8,592 cubic feet of soil was removed from the eight backhoe trenches, the dimensions of which varied from 13 to 42 feet long, 6 to 8 feet wide, and 4.1 to 8.5 feet deep. The following table contains the statistics for each trench.

Table 1
Backhoe Trench Statistics

Trench #	Dimensions (ft.)	Cubic feet
Trench 1	15 x 8 x 6.4 deep	768 ft ³
Trench 2	38 x 6 x 6.3 deep	1436 ft ³
Trench 3	15 x 8 x 6.5 deep	780 ft ³
Trench 4	25 x 7 x 4.1 deep	718 ft ³
Trench 5	42 x 7 x 5.0 deep	1470 ft ³
Trench 6	13 x 8 x 7.0 deep	728 ft ³
Trench 7	24 x 8 x 7.5 deep	1440 ft ³
Trench 8	14 x 8 x 8.5 deep	952 ft ³

STRATIGRAPHIC SUMMARY

Lot 27

Backhoe trenches 1, 2 and 3 were located in Lot 27. Backhoe Trench 1 lay near the midsection of the lot, Backhoe Trench 2 along the eastern boundary, and Backhoe Trench 3 at the northern boundary of the lot. The following table illustrates the sequence of stratigraphy in Backhoe Trenches 1, 2 and 3.

Table 2
Backhoe Trench 1 Data

Layer	Description	Thickness	Interpretations	Depth
.01	Asphalt	0.2 ft	Parking lot surface	0.2 ft.
.02	Gravel in dark greyish brown silty sand	0.5	Fill	0.7 ft.
.03	Yellowish brown silty sand	2.1 ft.		2.9 ft.
.04	Dark yellowish brown sand	0.5 ft.		3.4 ft.
.05	Very dark greyish brown silty sand	0.8 ft.	Feature fill	1.5 ft.
.06	Yellowish brown silty sand	3.7 ft	Feature fill	5.2 ft.
.07	Very dark greyish brown silty sand	1.0 ft.	Feature fill	6.2 ft.
.08	Light grey concrete (no reinforcing)	0.2 ft.	Feature floor	6.4 ft.
.09	Yellowish brown silty sand		Subsoil	

Table 3
Backhoe Trench 2 Data

Layer	Description	Thickness	Interpretation	Depth
.01	Asphalt	0.2 ft	Parking lot surface	0.2 ft.
.02	Dark greyish brown gravel in silty sand	0.2 ft.	Fill	0.4 ft.
.03	Very dark grey silty sand w/red brick fragments	0.8 ft.	Fill	1.2 ft.
.04	Dark yellowish brown silty sand	3.4 ft.	Fill	4.6 ft.
.05	Brown sand w/red brick fragments	1.4 ft.		6.0 ft.
.06	Dark yellowish brown silty sand	0.3 ft.	Subsoil	6.3 ft.
.07	Very dark greyish brown silty sand	1.3 ft.	Feature fill	4.4 ft.

Table 4
Backhoe Trench 3 Data

Layer	Description	Thickness	Interpretation	Depth
.01	Asphalt	0.2 ft.	Parking lot surface	0.2 ft.
.02	Very dark greyish brown silty sand w/bred brick & mortar	0.9 ft.	Fill	1.1 ft.
.03	Yellowish brown silty sand w/bred brick & mortar	4.9 ft.	Builder's trench	6.0 ft.
.04	Dark yellowish brown fine sand	3.5 ft.	Fill	4.6 ft.
.05	Yellowish brown fine sand	1.9	Subsoil	6.5 ft.

Five to nine contexts were recorded in each of Backhoe Trenches 1 through 3. If the contexts associated with the two features are eliminated, then either five or six contexts were recorded. In all cases the top layer was black asphalt, 0.2 feet thick. This is the parking lot surface. Beneath this layer were either two to four layers of fill. The top layer of the fill was dark greyish brown or very dark greyish brown silty sand with gravel or brick and mortar fragments. Thickness ranged from 0.2 to 0.9 feet averaging 0.5 feet. The deeper fill layers were usually yellowish brown in color, although brown and very dark grey appear once each. Texture was sand or silty sand. Thickness was quite variable. The total thickness of these two or three layers varied from 2.6 feet to 5.6 feet, averaging 3.9 feet. The deepest layer recorded for each trench was a yellowish brown or dark yellowish brown silty sand or fine sand. No inclusions were noted. This layer was identified as the subsoil.

Lot 26

Backhoe Trenches 4, 5 and 6 were placed in Lot 26. Backhoe Trench 4 was placed toward the northern end of the lot, Backhoe Trench 5 along the western boundary and Backhoe Trench 6 in the midsection of the lot.

Table 5
Backhoe Trench 4 Data

Layer	Description	Thickness	Interpretation	Depth
.01	Asphalt	0.2 ft.	Parking lot surface	0.2 ft.
.02	Very dark greyish brown	0.2 ft.	Fill	0.2 ft.
.03	Dark grey silty sand	0.6 ft.	Fill	1.0 ft.
.04	Dark yellowish brown silty sand	1.4 ft.	Fill	2.4 ft.
.05	Yellowish brown sand	1.7 ft.	Subsoil	4.1 ft.
.06	Dark yellowish brown sand	3.5 ft.	Feature fill	ft.

Table 6
Backhoe Trench 5 Data

Layer	Description	Thickness	Interpretation	Depth
.01	Asphalt	0.1 ft.	Parking lot surface	0.1 ft.
.02	Dark greyish brown silty sand	0.2 ft.	Fill	0.3 ft.
.03	Very dark grey silty sand	0.4 ft.	Fill	0.7 ft.
.04	Dark yellowish brown fine sand w/brick fragments	2.1 ft.	Fill	2.8 ft.
.05	Yellowish brown fine sand	2.2 ft.	Subsoil	5.0 ft.
.06	Yellowish brown fine sand	3.27 ft.	Feature fill	4.47 ft.

Table 7
Backhoe Trench 6 Data

Layer	Description	Thickness	Interpretation	Depth
.01	Asphalt	0.1 ft.	Parking lot surface	0.1 ft.
.02	Very dark greyish brown silty sand w/gravel	0.2 ft.	Fill	0.3 ft.
.03	Very dark grey to pale brown silty sand	0.6 ft.	Fill	0.9 ft.
.04	Dark yellowish brown sand	4.2 ft.	Fill	5.1 ft.
.05	Dark yellowish brown fine sand	1.9 ft.	Subsoil	7.0 ft.
.06	Yellowish brown fine sand	4.8 ft.	Fill	5.7 ft.

Six contexts were recorded in each of Backhoe Trenches 4 through 6. When the contexts associated with the features in Backhoe Trenches 4 and 5 are eliminated, then either five or six contexts were recorded. In all cases the top layer was black asphalt 0.1 to 0.2 feet thick. This layer was the parking lot surface. Beneath this layer were three or four layers of fill. The top of the fill was a dark greyish brown or very dark greyish brown sand or silty sand which was 0.2 feet thick. The next layer encountered was a very dark grey silty sand mottled with pale brown silty sand in one case. Thickness ranged from 0.4 to 0.6 feet, averaging 0.5 feet. The deeper part of the fill consisted of one or two layers of dark yellowish brown or very dark yellowish brown silty sand or sand. The total thickness ranged from 1.4 feet to 4.8 feet. It averaged 3.1 feet thick. The deepest layer recorded in all three trenches was a yellowish brown or dark yellowish brown sand. This layer was the subsoil.

Lot 24

Backhoe Trenches 7 and 8 were placed in Lot 24. Backhoe Trench 7 lay across the midsection of the property and Backhoe Trench 8 along the western boundary.

Table 8
Backhoe Trench 7 Data

Layer	Description	Thickness	Interpretation	Depth
.01	Asphalt	0.1 ft.	Parking lot surface	0.1 ft.
.02	Very dark greyish brown silty sand w/gravel	0.2 ft.	Fill	0.3 ft.
.03	Dark greyish brown silty sand w/red brick, mortar, cobbles, etc.	1.3 ft.	Fill	1.6 ft.
.04	Dark yellowish brown fine sand w/metal & red brick fragments	3.4 ft.	Fill	5.0 ft.
.05	Yellowish brown fine sand	2.5 ft.	Subsoil	7.5 ft.
.06 South side only	Very dark grey silty sand w/building rubble	3.5 ft.	Fill of front building cellar	4.0 ft.

Table 9
Backhoe Trench 8 Data

Layer	Description	Thickness	Interpretation	Depth
.01	Asphalt	0.1 ft.	Parking lot surface	0.1 ft.
.02	Very dark greyish brown silty sand	0.2 ft.	Fill	0.3 ft.
.03	Dark greyish brown silty sand	0.4 ft.	Fill	0.7 ft.
.04	Dark yellowish brown sand	5.3 ft.	Fill	6.0 ft.
.05	Yellowish brown fine sand	2.5 ft.	Subsoil	8.5 ft.

Either five or six contexts were recorded in Backhoe Trenches 7 and 8. When the fill of the cellar seen in Backhoe Trench 7 is eliminated, then five layers were recorded in each trench. The top layer was a black asphalt, 0.1 feet thick. Beneath this layer were three layers of fill. The first fill layer was a very dark greyish brown silty sand with some gravel. It was 0.2 feet thick. The second fill layer was a dark greyish brown silty sand with red brick, mortar, and other building rubble. It was 0.4 to 1.3 feet thick. The deepest fill layer was a dark yellowish brown sand. It was 3.4 to 5.3 feet thick. The deepest layer recorded was a yellowish brown fine sand. This layer was the subsoil.

BT1 PLAN

3 Sept. 2003 WIR

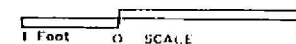
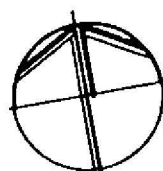
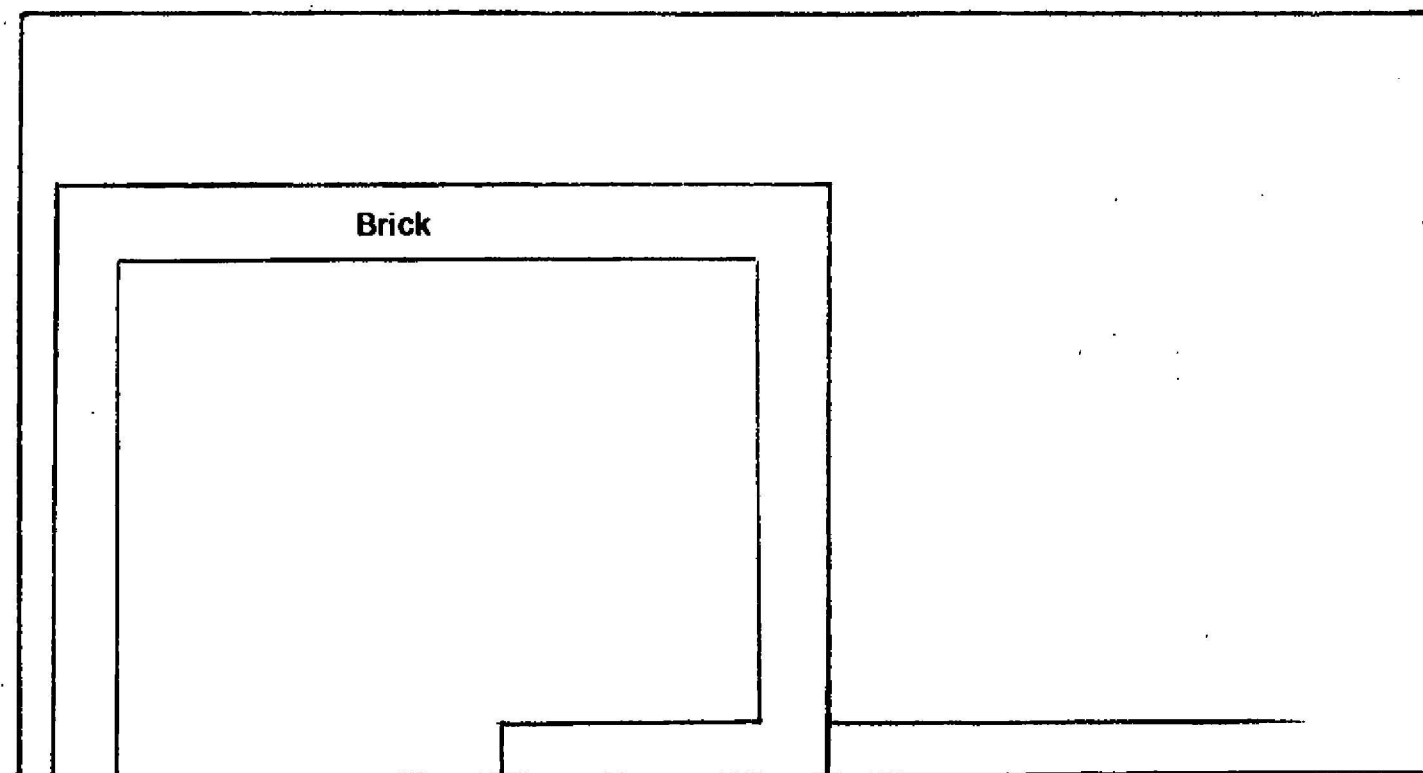
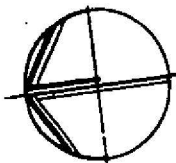
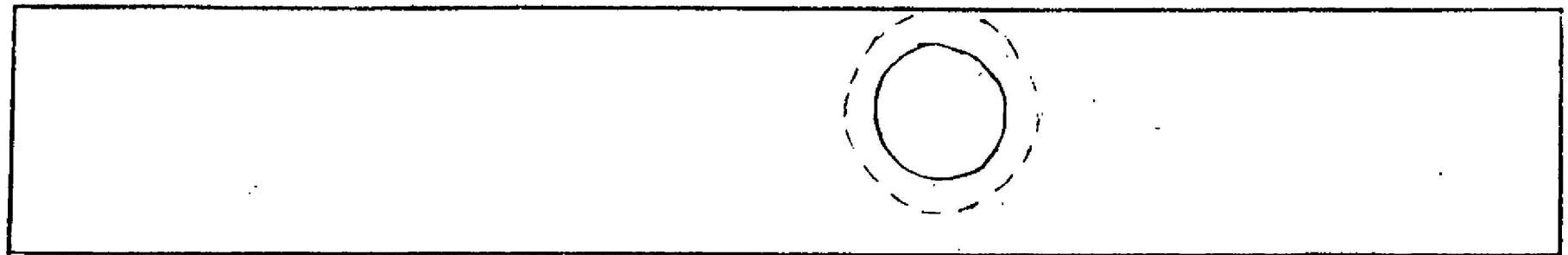


Figure 3 Plan of Backhoe Trench 1.

BT 2

PLAN

3 Sept. 2003 WIR



SCALE



0 4 feet

Figure 4 Plan of Backhoe Trench 2.

BT5 PLAN

4 Sept. 2003 WIR

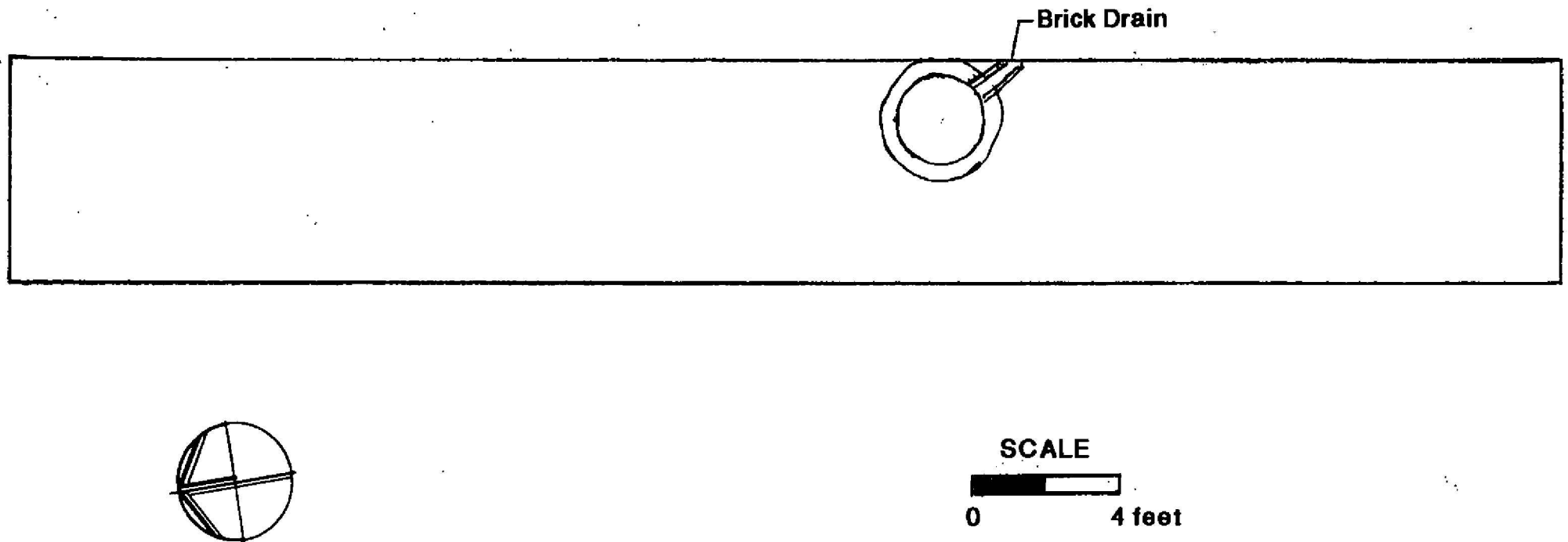


Figure 5 Plan of Backhoe Trench 5.

ARTIFACT PROCESSING AND ANALYSIS

Laboratory Methodology

Artifacts recovered from the field testing at the 100 Jay Street project area were brought to the Greenhouse Consultants laboratory for processing and analysis. Artifacts were washed in room temperature tap water, dried, marked and catalogued. The drying procedure was slow air drying on screens in the laboratory processing area. The artifacts were then labeled with their appropriate context number.

Artifacts were identified using a modified form of the Cultural Material Data Base Taxonomy of the National Park Service. Artifacts were coded for their functional group, class and material. Technological and stylistic manufacturing ranges were assigned when an artifact exhibited a datable attribute. Establishing a range of the manufacture of artifacts provides a time frame for establishing dates after which the refuse deposits were made. This information was recorded on a tyvek label which was inserted with the artifact into a clear polyethylene ziplock bag. The bags were also labeled with context and catalog numbers.

Contexts were assigned series numbers in accordance to the type of data recovery method. The data recovery methods employed at 100 Jay Street were backhoe trenching and feature exploration. The 4000 series represents trenching and 6000 series for the features. The second layer of Backhoe Trench 1 would be identified as 4001.02. See Appendix 1 for the context labeling system.

Artifact Analysis

Sampled artifacts were retained from three backhoe contexts and four feature contexts, for a total of 74 artifacts.

Backhoe Trench Context	Amount
4006.07	4
4007.06	4
4008.04	6

Subtotal	14
Feature Context	
6001.01 (Backhoe Trench 1)	8
6002.07 (Backhoe Trench 2)	41
6003.01 (Backhoe Trench 4)	7
6004.01 (Backhoe Trench 5)	4

Subtotal	60
Total	74

Lot 24

Backhoe Trenches 7 and 8 contained a total of ten artifacts. Context 4007.06 contained two bottles, a jar and an electrical insulator. The base of the milk glass jar was embossed MUSTEROLE CLEVELAND. Mustard plaster was used to treat a variety of ailments including congestion, muscle soreness, cold coughs, skin rashes and bites, and numerous other illnesses. This company dates to after 1906 (Fike 1987:174). One aqua bottle was embossed: S. LIEBMANN'S SONS/BRC CO/N.Y. and the second bottle was embossed BROCKWAY/7, a machine made, Philadelphia oval base with a patent lip. The second bottle dates to the twentieth century.

Context 4008.04 contained six artifacts, including two ceramics and four glass. The ceramics included one small piece of ironstone and a yellowware base to a bowl or mug with manganese in the interior and exterior under clear glaze. The first bottle was part of a cylindrical emerald colored body, embossed G.V. DEMOTT/5 stars/DEM. The second bottle was a complete light green soda bottle embossed CREAM SODA/F.K./1860/BROOKLYN made in a two piece mold. The third bottle was a complete, aqua, made in a two piece mold, embossed: M.B. & CO./145/WEST 35TH ST./NY/1861. The fourth bottle was also complete, emerald colored, squat cylindrical bodied embossed: HUBENER/BROOKLYN/PHILADELPHIA/ XXX/PORTER & ALE. Spillman (1983:56) states these style of porter ale bottles were manufactured between 1840 and 1876.

Lot 24 Summary. Material recovered from the trenches at Lot 24 reflect two different periods. The artifacts from Trench 7, placed across the midsection of the lot, represent remains from twentieth century discards. The artifacts from Trench 8, excavated along the western boundary of the lot, were manufactured during the second half of the nineteenth century.

Lot 26

Trenches 4, 5 and 6 were placed in this lot, with artifacts retained from backhoe context 4006.06 (4), Feature contexts 6003.01 (7), and 6004.01 (4), for a total of fifteen.

Context 4006.06 held four glass or glass related items. One clear ink bottle was recovered that had a cylindrical body and rolled lip. A complete, clear milk bottle was also retained, embossed 4/1//QT/SHEFFIELD//SHEFFIELD/REGISTERED/MTC. Two bottle bands were saved. One was white plastic with an imprint of STA-FAST/N E in diamond Y/STERILIZED. The second band was a red band, over a white band, imprinted with SOLID//SET/TRADEMARK/STERILIZED/N.Y.U.S.A.

Context 6003.01 in Backhoe Trench 4, contained seven artifacts, including two pieces of ceramic and five glass. The two ceramic artifacts were a piece of a plain porcelain plate and a piece of a plain ironstone plate. The ironstone plate was a large enough piece to contain part of maker's mark, the unicorn from the coat of arms. The five glass artifacts included a glass mug, of clear press paneled/diamond pattern. A complete, 8-paneled, umbrella ink bottle with a pontil mark was the second glass artifact found. The third piece of glass was an aqua bottle with an ovoid base. It has a sloppily applied downtooled lip and was made in a two-piece mold. The fourth glass artifact was an aqua bottle, which mended, with an avoid base, downtooled lip and cup

bottom mold. The shoulders were embossed: SACHEVALIERS//...OR THE HAIR. The ink bottle was probably made between 1865 and 1900 (Spillman 1983:122. The two bottles could have been made during a wide range of time: the first one between 1750 and 1880 (Jones and Sullivan 1985:27), and the second one, from 1850 to the 1920s (ibid.:38).

Four artifacts were retained from Context 6004.01 in Backhoe Trench 5. These were two mammal ribs, a small piece of ironstone ceramic, and a piece of clear bottle glass with molded rings exterior.

Lot 26 Summary. Artifacts from Trench 6, placed across the midsection of the lot, are twentieth century in manufacture. The same may be true for artifacts from the feature, 6004.01, in Backhoe Trench 5, placed along the western boundary of the lot. Artifacts from the feature in Trench 4, Context 6003.01, excavated toward the back of the lot, theoretically span a century and a half of manufacture. Comparison of manufacturing ranges indicates a manufacturing range in the second half of the nineteenth century.

Lot 27

Backhoe Trenches 1, 2 and 3 were situated in Lot 27. Artifacts were sampled from the feature in Backhoe Trench 1, Context 6001.01 and the feature in Backhoe Trench 2, Context 6002.07.

Context 6001.01 contained eight artifacts, including three pieces of ceramic, three pieces of glass, mortar and metal. The metal was a rusted, white enameled kettle lid. The surface of the piece of mortar had circular porcelain tiles embedded in it. Ceramics included one piece of plain porcelain, 50 percent of a broken hotelware cup, and a stoneware lid, with a Bristol slip, sponged blue. The bottles consisted of a broken milk bottle embossed: 4/SHEFFIELD/REG-U S-PAT. OFF./1 QT//4/SHEFFIELD FARMS CO INC/SHEFFIELD/REG-U S-PAT.OFF./NEW YORK. The second bottle was complete, machine made with a club sauce finish and partial cork. The third bottle was also complete, a Philadelphia oval made in a two piece vertical mold with separate base; prescription lip with cork, embossed: M. & S. ARENSBERG/Wholesale and Retail Druggists/BROOKLYN, NEW YORK.

Context 6002.07 held 41 artifacts. The functional categories of kitchen group, faunal/floral, architecture, household furnishings, and activities were represented.

Table 10
Feature 2, Context 6002.07, Artifacts by Functional Group

Functional Group	Subgroup	Class	Amount	Subtotal	Total
Kitchen					19
	Ceramics			9	
		Redware	1		

Functional Group	Subgroup	Class	Amount	Subtotal	Total
		Staffordshire?	1		
		Pearlware?	1		
		Ironstone	1		
	Glass			10	
		Container glass	5		
		Bottle glass	5		
Fauna/flora					12
	Avian bone			9	
	Mammal bone			1	
	Mammal molar			1	
	Oyster shell			1	
Architecture/ Construction					5
	Brick			1	
	Wood			1	
	Tile			1	
	Flat glass			2	
Household furnishings					2
	Hook, screw in			1	
	Flat glass, ridged			1	
Activities					6
	Wire			1	
	Metal bar			1	

Functional Group	Subgroup	Class	Amount	Subtotal	Total
	Film leader			1	
	Orb, blue			1	
	Coal			2	

Summary Lot 27. Feature 1, Context 6001.01, in Trench 1 represents cultural remains from the twentieth century. The artifacts sampled in Feature 2, Context 6002.07, Trench 2, represent a span of time from possibly the late eighteenth century through the nineteenth or early twentieth century.

RESULTS

The archaeological testing of the 100 Jay Street project area resulted in the discovery of four features. A total of eight backhoe trenches were completed within Lots 24, 26 and 27 on Block 53. Lot 26 contained one feature, and two were found in Lot 27.

Backhoe Trench 1 in Lot 27 contained a rear cellar entrance to the main structure. This entryway was approximately five feet north-south by 6.7 feet east-west. The feature began at 0.7 feet below grade and the floor was found at 6.2 feet below grade. The floor was an unreinforced concrete slab. This feature was completely emptied of fill which contained twentieth century artifacts.

Backhoe Trench 2 in Lot 27 contained a probable privy. This feature is circular in plan and was built of dry laid stone. It is located along the eastern lot boundary, about in the center of the rear yard. The upper part of the fill was sampled and found to contain artifacts dating to the late eighteenth and nineteenth centuries.

Backhoe Trench 4 in Lot 26 contained part of a pit or trench in its eastern 3.5 feet. This area is adjacent to a building in Lot 25, seen on the 1887 Sanborn map (Bergoffen 2001:Figure 10). This makes it likely that this feature is part of a builder's trench for that structure. The artifacts recovered date to the last half of the nineteenth century and are likely associated with Lot 25 and not Lot 26.

Backhoe Trench 5 in Lot 26 contained a probable dry well. It was placed along the western lot boundary near the center of the rear yard. A dry laid brick and stone drain was found leading into it. The dry-well itself was circular in plan and composed of dry-laid stone. The fill consisted of fine sand with few artifacts. The artifacts found appeared to be from the early twentieth century. This feature is quite similar to a dry-well found in the MetroTech project in Brooklyn.

No features were found in Backhoe Trenches 3, 6, 7 or 8.

Only the feature in Backhoe Trench 2 has the likelihood of providing evidence important to local history. This is the only feature found which contains a fair number of domestic artifacts that can be associated with specific occupants.

CONCLUSIONS AND RECOMMENDATIONS

The above text documents the procedures and results of the archaeological testing at 100 Jay Street, Kings County, New York. It is our opinion that a significant historic archaeological site exists within Lot 27. This site consists of a privy, and the lot was occupied by the widow Cassin and three boarders during the mid-nineteenth century. Patrick Cream owned it from 1866 through 1869, followed by Mary Ellsinger from circa 1875 through 1886.

This site is potentially eligible for the National and New York State Registers of Historic Places under Criterion D, its ability to yield information important to local history. Recovery and analysis of the fill of this cistern could provide insights into the lives of a middle class widow and her boarders in Brooklyn during the nineteenth century. Present plans for Lot 27 require the destruction of this privy.

We recommend that the fill of the privy found in Lot 27 be completely excavated prior to construction of anew structure. This excavation would recover the archaeological data represented by this feature prior to its destruction.

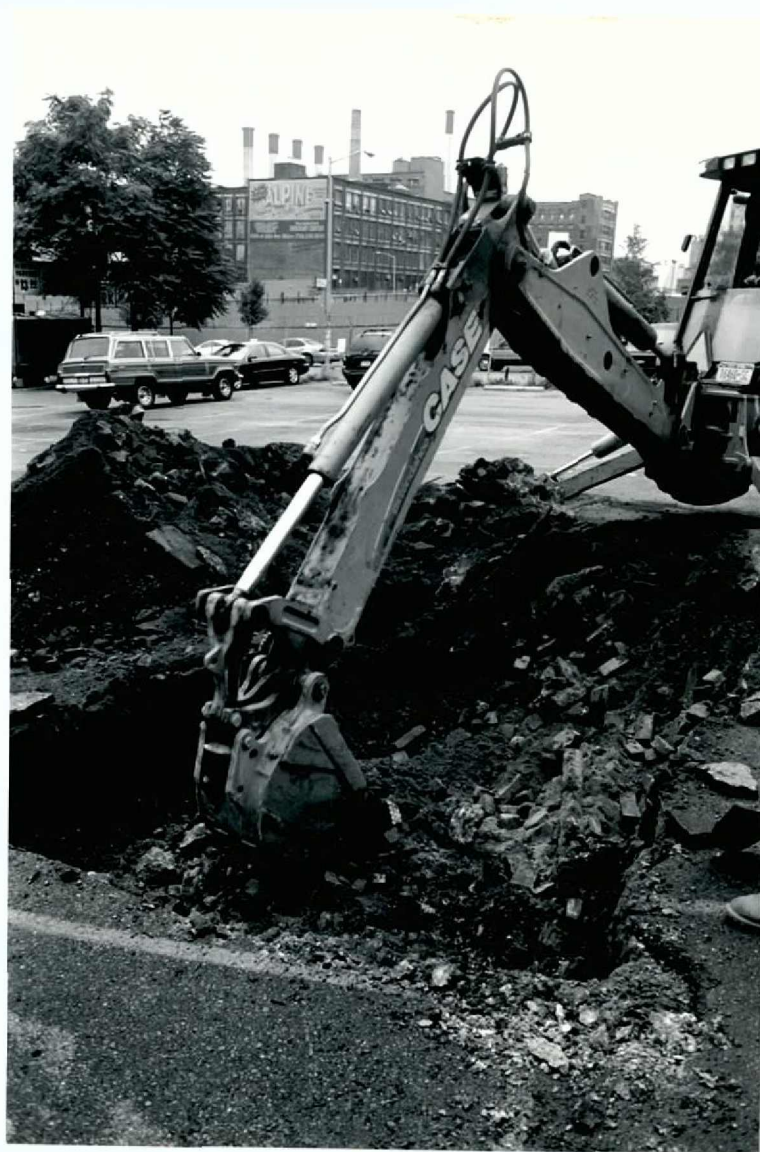


Plate 1 View of excavation of Backhoe Trench 1 looking northeast.



Plate 2

View of Backhoe Trench 1 looking west showing cellar entryway.

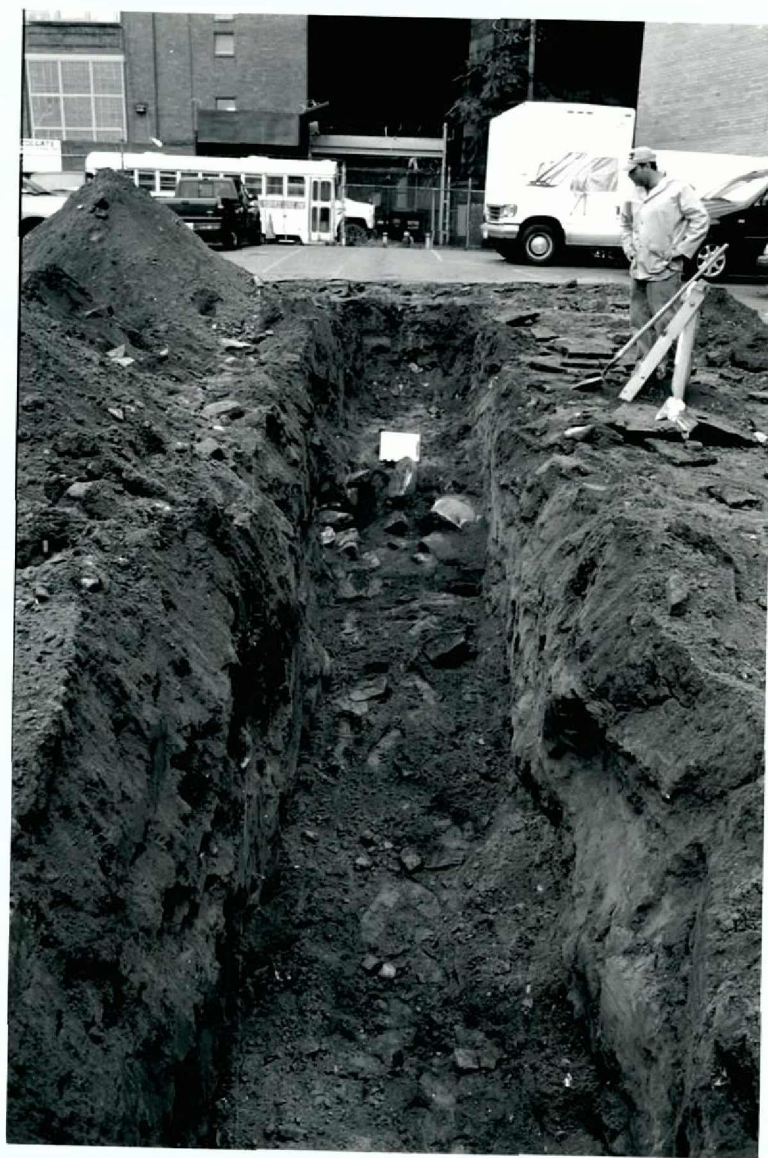


Plate 3 View of Backhoe Trench 2 looking south showing privy or dry well.

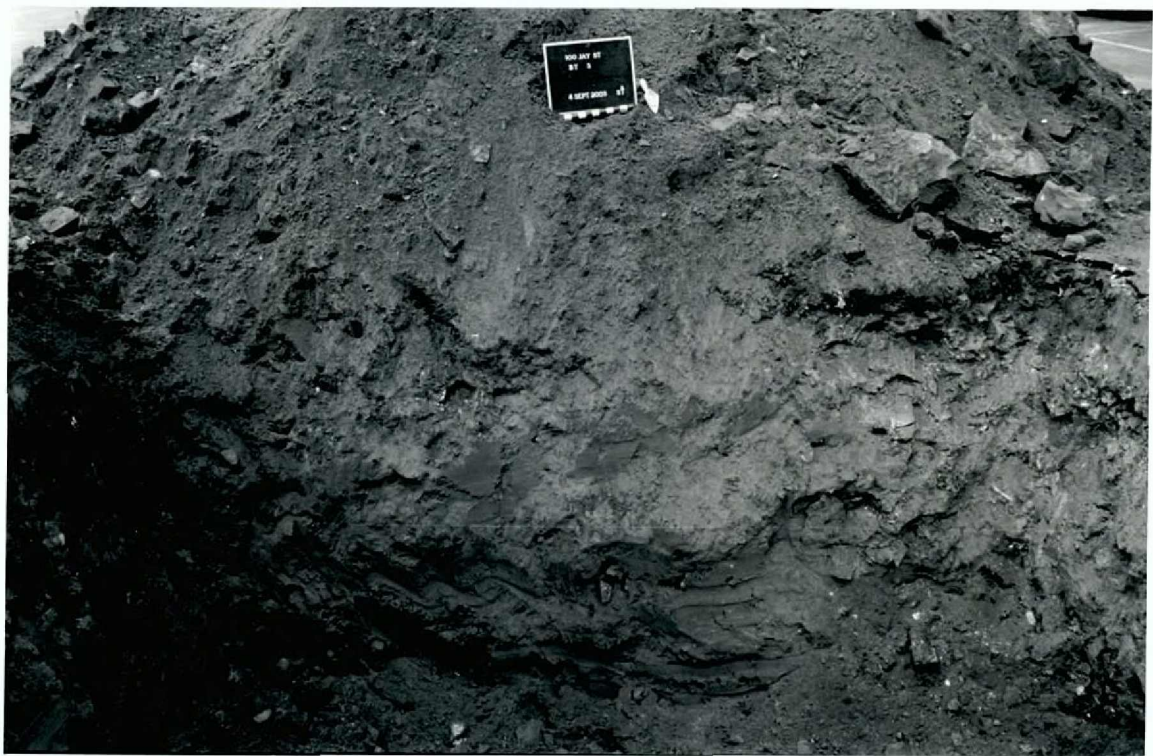


Plate 4 View of the south section of Backhoe Trench 3.



Plate 5 View of Backhoe Trench 4 looking west.

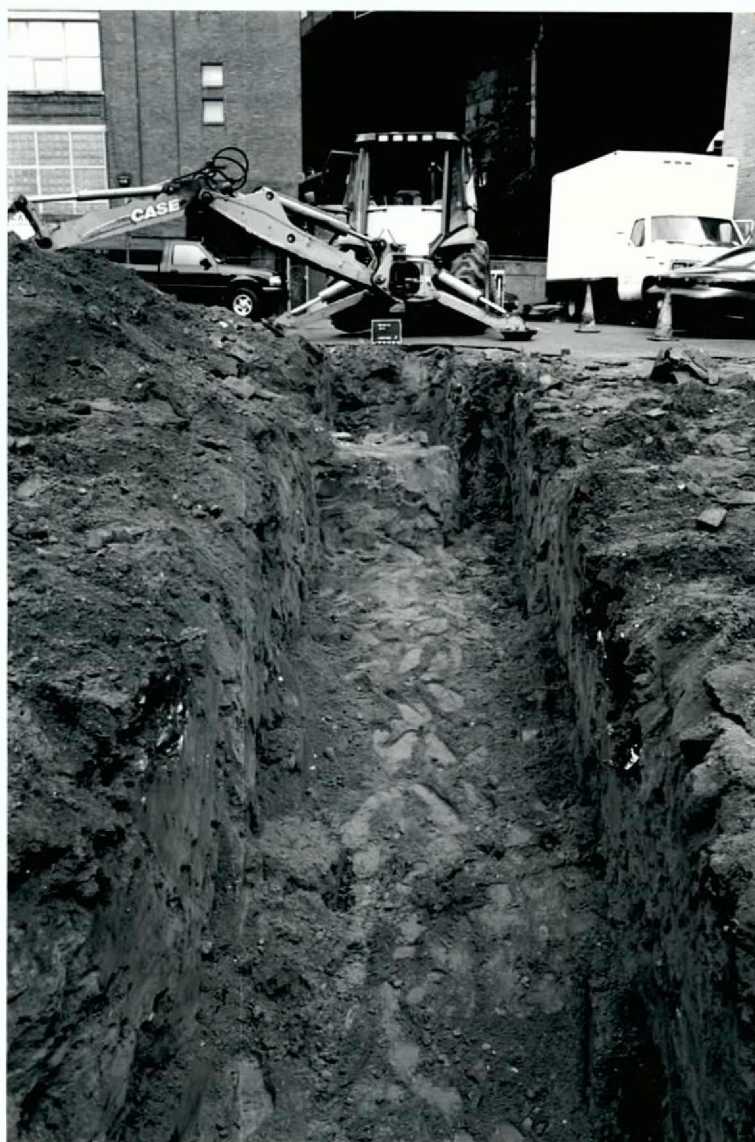


Plate 6 View of Backhoe Trench 5 looking south with dry well in background.



Plate 7 View of dry well in Backhoe Trench 5 looking east.



Plate 8 Detail of brick drain leading to dry well in Backhoe Trench 5 looking north.



Plate 9 View of the north section of Backhoe Trench 6.

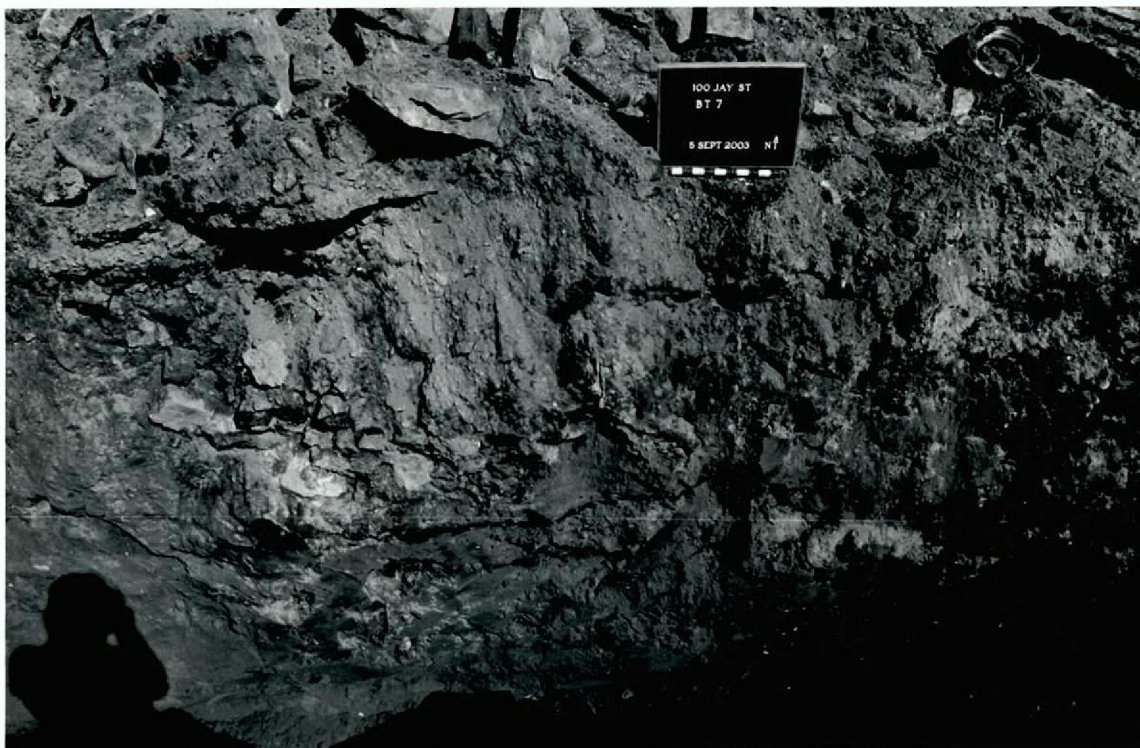


Plate 10 View of the north section of Backhoe Trench 7.



Plate 11 View of the west section of Backhoe Trench 8.

BIBLIOGRAPHY

- Bergoffen, Celia J.
2001 Light Bridges at 100 Jay Street Rezoning, Block 53, Lots 3, 6, 21 and 24-27, Brooklyn, New York. Phase 1A Archaeological Assessment Report.
- Fike, Richard E.
1987 The Bottle Book. A Comprehensive Guide to Historic, Embossed Medicine Bottles. Salt Lake City, Utah: Biggs M. Smith, Inc, Peregrine Smith Books.
- Jones, Olive and Catherine Sullivan
1985 The Parks Canada Glass Glossary for the Description of Containers, Tableware, Flat Glass, and Closures. Ottawa, Canada: Studies in Archaeology, Architecture and History, National Historic Parks and Sites Branch, Parks Canada, Environment Canada.
- Spillman, Jane S.
1983 Glass Bottles, Lamps & Other Objects. New York, New York: Alfred A. Knopf.
- United States Geological Survey
1967 Brooklyn, New York Quadrangle. 7.5 minute series topographic map. Photorevised 1979.

APPENDIX 1
FIELD RECORD FORMS AND CONTEXT NUMBERING SYSTEM

SURVEY RECORD SHEET : Postholes, Auger holes, Shovel tests

PROJECT : 100 Jay St.			COORDINATES : 15' x 8'		
SITE :	SUPERVISOR : WR	EXCAVATOR : WG	SCREENED ? No	DATE : 3 Sept. 03	TEST TYPE AND NO. : PT 1
STRATIGRAPHY :					
LAYER	DEPTH *	DESCRIPTION	COLOR	CULT. MAT.	NOTES
1	0 - 0.2'	Asphalt	10 YR 2/1 Blk	—	Surface of Parking lot
2	0.2' - 0.7'	Gravel in Si Sa	10 YR 4/2 Dk Gr. Br.	—	Fill
3	0.7' - 2.9'	Si Sa	10 YR 5/4 Yel. Br.	concrete, Red Br. Marble (disc.)	—
4	2.9' - 3.4'	Sa	10 YR 4/6 Dk Yel. Br.	—	—
5	3.4' - 1.5'	Si Sa	10 YR 3/2 v. Dk Gr. Br.	Red Br., Marble (disc.)	Feature Fill
6	1.5' - 5.2'	Si Sa	10 YR 5/4 Yel. Br.	Profile Red Br., Marble, Plaster, light green ceramic, etc.	Feature Fill
7	5.2' - 6.2'	Si Sa	10 YR 3/2 v. Dk Gr. Br.	Red Br., Marble, Wood (disc.)	Feature Fill
8	6.2' - 6.4'	Concrete (No reinforcing)	10 YR 7/1 Lt. Gr.	concrete.	Feature Floor
* Give depths relative to ground surface					
General Notes : (Note if cult. material retained, and if soil samples are taken.) Layers 3+4 outside feature Layers 5, 6+7 inside feature Layer 9 - 6.4' - ?' Si Sa 10 YR 5/6 Yel. Br.					
Cross Refs :					
Plan			Photos		
Section			Notebook		

SURVEY RECORD SHEET : Postholes, Auger holes, Shovel tests

PROJECT : 100 Jay St.			COORDINATES : 6' x 38'		
SITE :	SUPERVISOR : WR	EXCAVATOR : WG	SCREENED ? Sample 1/4"	DATE : 3 Sept. 03	TEST TYPE AND NO. : BT 2
STRATIGRAPHY :					
LAYER	DEPTH *	DESCRIPTION	COLOR	CULT. MAT.	NOTES
1	0 - 0.2'	Asphalt	10 YR 2/1 Blk	Asphalt (disc.)	Parking lot Surface
2	0.2' - 0.4'	Gravel in Si Sa	10 YR 4/2 Dk Gr. Br.	(disc.)	Fill
3	0.4' - 1.2'	Red Br. Frag in Si Sa	10 YR 3/1 v. Dk Gr.	Red Bricks (disc.)	Fill
4	1.2' - 4.6'	Si Sa	10 YR 4/4 Dk Yel. Br.	—	Fill
5	4.6' - 6.0'	Red Br. Frag in Sa	10 YR 5/3 Br.	Red Bricks (disc.)	—
6	6.0' - ?	Si Sa	10 YR 3/4 Dk Yel. Br.	—	Subsoil
7	3.1' - *	Si Sa	10 YR 3/2	Ceramic, G. Br., Red Br., Wood, Shell, Bone, Metal.	Feature Fill
8					
* Give depths relative to ground surface					
General Notes : (Note if cult. material retained, and if soil samples are taken.) Stopped @ 6.3 ft. Stone Feature found getting ca. 2.04' (Dry Laid Stone) * stopped @ 4.4 ft.					
Cross Refs :					
Plan			Photos		
Section			Notebook		

SURVEY RECORD SHEET : Postholes, Auger holes, Shovel tests

PROJECT : 100 Jay St.			COORDINATES : 15 x 8'		
SITE :	SUPERVISOR : WR	EXCAVATOR : WG	SCREENED ? No	DATE : 4 Sept. 03	TEST TYPE AND NO. : BT 3
STRATIGRAPHY :					
LAYER	DEPTH *	DESCRIPTION	COLOR	CULT. MAT.	NOTES
1	0 - 0.2'	Asphalt	10 YR 2/1 Blk	Asphalt (obs.)	Plung Lot
2	0.2' - 1.1'	SiSa w/ Red Br. + Marble Frag	10 YR 3/2 V. Blk Br.	Red Br. Plastic (disc.)	Fill
3	1.1' - 6.0	Red Br. + Marble in SiSa	10 YR 5/4 Yel Br	Red Br. + Marble (disc.)	Buildover Trench
4	1.1 - 4.6'	Fine Sand	10 YR 4/6 Lk Yel Br.	Red Br. (disc.)	Fill
5	4.6' - ?	Fine Sand	10 YR 5/6	—	Subsoil
6					
7					
8					
* Give depths relative to ground surface					
General Notes : (Note if cult. material retained, and if soil samples are taken.) Stopped @ 6.5 ft.					
Cross Refs :					
Plan			Photos		
Section			Notebook		

SURVEY RECORD SHEET : Postholes, Auger holes, Shovel tests

PROJECT : 100 Jay St.			COORDINATES : 25 x 7'		
SITE :	SUPERVISOR : WR	EXCAVATOR : BK	SCREENED ?	DATE : 9.4.03	TEST TYPE AND NO. : PT 44
STRATIGRAPHY :					
LAYER	DEPTH *	DESCRIPTION	COLOR	CULT. MAT.	NOTES
1	0 - 0.2'	Asphalt	10 YR 2/1 Black	N.C.M.	Asphalt
2	0.2' - 0.4'	Fill	10 YR 3/2 V. Blk Br.	"	Fill
3	0.4' - 1.0'	Si My Sand	10 YR 4/6 Lk Yel Br.	"	Fill
4	1.0' - 2.4'	Si My Sand	10 YR 4/6 Lk Yel Br.	"	Fill
5	2.4' - 4.1'	Sand	10 YR 5/6 Lk Yel Br.	"	Subsoil
6	See Below	Sand	10 YR 4/6 Lk Yel Br.	6.0 ft. hole, Corrosion	Feature Fill
7					
8					
* Give depths relative to ground surface					
General Notes : (Note if cult. material retained, and if soil samples are taken.) 10 YR 4/6 0.4 YR 4/6 Si My Sand East 3.5' of Trench (artifacts sampled) cuts layers 4 + 5					
Cross Refs :					
Plan			Photos		
Section			Notebook		

SURVEY RECORD SHEET : Postholes, Auger holes, Shovel tests

PROJECT : 100 Jay St		COORDINATES : 42' x 7'			
SITE :	SUPERVISOR : WLR	EXCAVATOR : BSV	SCREENED : 1/4"	DATE : 7/4/83	TEST TYPE AND NO. : BT 5
STRATIGRAPHY :					
LAYER	DEPTH *	DESCRIPTION	COLOR	CULT. MAT.	NOTES
1	0-0.1'	Asphalt	10yr 2 1/2 Blk	PCM	Asphalt
2	0.1'-0.3'	Silty Sand	10yr 4 1/2 Blk	"	Fill
3	0.3'-0.7'	Silty Sand	10yr 3 1/2 Blk	"	Fill
4	0.7'-2.8'	Fine Sand	10yr 4 1/2 Blk	"	Fill
5	2.8'-5.0'	Fine Sand	10yr 5 1/2 Blk	"	Subsoil
6	Feature @ 1.2' LAY?	Fine Sand	10yr 5 1/4 Blk	Boiler plates, ceramic	(Feature) Fill
7					
8					
* Give depths relative to ground surface					
General Notes : (Note if cult. material retained, and if soil samples are taken.)					
Feature 4 1/2" Boilers 3.3' to 4.4' (0.9' of fill excavated & sampled)					
Cross Refs :					
Plan		Photos			
Section		Notebook			

SURVEY RECORD SHEET : Postholes, Auger holes, Shovel tests

PROJECT : 100 Jay St		COORDINATES : 17 KB 1			
SITE :	SUPERVISOR : WLR	EXCAVATOR : BSV	SCREENED : 1/4"	DATE : 9/5	TEST TYPE AND NO. : BT 6
STRATIGRAPHY :					
LAYER	DEPTH *	DESCRIPTION	COLOR	CULT. MAT.	NOTES
1	0-0.1'	Asphalt	10yr 2 1/2 Blk	PCM	Asphalt
2	0.1'-0.3'	Silty Sand	10yr 3 1/2 Blk	X Discarded here	Fill
3	0.3'-0.9'	Silty Sand	10yr 3 1/2 Blk	Building debris	Fill
4	0.9'-5.1'	Sand	10yr 4 1/2 Blk	"	Fill
5	5.1'-7.0'	Fine Sand	10yr 4 1/2 Blk	PCM	Subsoil
6	0.9'-5.7'	Silty Sand	10yr 3 1/2 Blk	X 200 Bricks, glass, Insulation	Fill
7					
8					
* Give depths relative to ground surface					
General Notes : (Note if cult. material retained, and if soil samples are taken.)					
Art. Fact recovered 2 Bottles (Fill layer 6)					
Cross Refs :					
Plan		Photos			
Section		Notebook			

SURVEY RECORD SHEET : Postholes, Auger holes, Shovel tests

PROJECT : 100 Jay St., Brooklyn		COORDINATES : 24 x 8'			
SITE :	SUPERVISOR : WR	EXCAVATOR : WG	SCREENED ? No	DATE : 5 Sept. 03	TEST TYPE AND NO. : B.T. 7
STRATIGRAPHY :					
LAYER	DEPTH *	DESCRIPTION	COLOR	CULT. MAT.	NOTES
1	0 - 0.1'	Asphalt	10 YR 2/1	Asphalt (thin)	Along Lat Surface
2	0.1 - 0.3'	Silty Sand w/ gravel	10 YR 3/2 V Dk Gr Bl	Red Brick (disc)	Fill
3	0.3' - 1.6	Silty Sand w/ Red Brick Mortar, Cobble, etc.	10 YR 4/2 Dk Gr. Bl.	Red brick, Mortar (disc)	Fill
4	1.6 - 5.0	Fine Sand w/ Metal Red Brick Fragments	10 YR 4/6 Dk Yel. Br.	Red Brick, Metal (disc)	Fill
5	5.0 - ?	Fine Sand	10 YR 5/6 Yel Br.	—	Subsoil
6	0.5 - 4.0'	Silty Sand w/ Rdg. Rubble	10 YR 3/1 V. Dk. Gr.	Glass Beads, Ceramic, wood, Mortar, etc.	Fill of Cellar front Bldg.
7					
8					
* Give depths relative to ground surface					
General Notes : (Note if cult. material retained, and if soil samples are taken.) Sample 10-7.5 ft Layer 6 only on S. side of trench.					
Cross Refs :					
Plan			Photos		
Section			Notebook		

SURVEY RECORD SHEET : Postholes, Auger holes, Shovel tests

PROJECT : 100 Jay St		COORDINATES : 14 x 8'			
SITE :	SUPERVISOR : WR	EXCAVATOR : BN	SCREENED ? 1/4"	DATE : 9/5	TEST TYPE AND NO. : BT #8
STRATIGRAPHY :					
LAYER	DEPTH *	DESCRIPTION	COLOR	CULT. MAT.	NOTES
1	0 - 0.1'	Asphalt	10 YR 2/1 Blk	Asphalt	Asphalt
2	0.1' - 0.3'	Silty Sand	10 YR 3/2 V Dk Gr. Bl.	Brick	Fill
3	0.3' - 0.7'	Silty Sand	10 YR 4/2 Dk Gr. Bl.	Brick, metal, wood (Bldg. Rem.)	Fill
4	0.7' - 6.0'	Sand	10 YR 4/6 Dk Yel. Br.	4 Tiles, 2 pc. Ceramic	Fill
5	6.0' - 8.5'	Fine Sand	10 YR 5/6 Yel Br.	Asphalt	Subsoil
6					
7					
8					
* Give depths relative to ground surface					
General Notes : (Note if cult. material retained, and if soil samples are taken.) 8.5' to Bottom of Trench					
Cross Refs :					
Plan			Photos		
Section			Notebook		

APPENDIX 1 CONTEXT NUMBERING AND PROVENIENCE LABELING

A field recording system which encompasses a variety of conditions and situations is optimal for any archaeological project. Among these situations are the size of the project, the number of different field techniques and the number of expected artifacts. The field recording system used was developed by Greenhouse Consultants and was based on modifications of other accepted systems.

All contexts are numbered in the field and these numbers are applied to the artifacts. The format for numbering is XX-9999.99 where X is alphanumeric and 9 is numeric. The alphanumeric characters to the left of the hyphen are the prefix. The two digits to the right of the decimal point are used only when it is necessary to refer to strata within a context. The four digits between the prefix and decimal subdivision may be called the base code.

The prefix is a two character designation of the project parcel. The four digit numeric base code can be divided into two parts; the first digit being separate from the last three. The first numeric digit indicates the type of field technique used. The codes are as follows:

1000:	unprovenienced surface collection
2000:	provenienced surface collection
3000:	shovel testing
4000:	trenching
5000:	excavation units
6000:	feature excavation
7000:	borings
8000:	
9000:	transects

The three digits following the technique code are unique for each location and are assigned sequentially. Decimal subdivisions may be used for techniques three through six to indicate specific strata. For example, D1-3001.02 refers to Area 1 (D1), shovel test (3), number 1 (001), at the second layer (.02).

APPENDIX 2
ARTIFACT INVENTORY

APPENDIX 2

A. Table for National Park Service Material Culture Data Base Coding Chart: Groups, Classes and Materials

GROUPS AND CLASSES

- | | |
|--------------------------------------------------------------------------------------------------------------------------------------------------------------------------------------------------------------------------------------------------------------------------------------------------------------------------------------------------------------------------------------------------------------------------------------------------------------------------------------------------------------------------------------------------------------------------------------------------------------------------------------------------------------------------------------------------------------------------------------------------------------------------------------------------------------------------------------------------------------------------------------------------------------------------------------------------------------------------------------------------------------------------------------------------------------------------------------------------------------------------------------------------------------------|---------------------------------------------------------------------------------------------------------------------------------------------------------------------------------------------------------------------------------------------------------------------------------------------------------------------------------------------------------------------------------------------------------------------------------------------------------------------------------------------------------------------------------------------------------------------------------------------------------------------------------------------------------------------------------------------------------------------------------------------------------------------------------------------------------------------------------------------------------------------------------------------------------------------------------------|
| <p>01 KITCHEN GROUP</p> <p>01 Dishes</p> <p>02 Containers</p> <p>03 Tableware</p> <p>04 Kitchenware</p> <p>02 FAUNAL/FLORAL GROUP</p> <p>01 Mammalia</p> <p>02 Aves</p> <p>03 Reptilia</p> <p>04 Amphibia</p> <p>05 Pisces</p> <p>09 Ethnafaunal/Zoological</p> <p>16 Ethnobotanical</p> <p>03 ARCHITECTURAL GROUP</p> <p>01 Window glass</p> <p>02 Nails</p> <p>03 Spikes</p> <p>04 Door & Window hardware</p> <p>05 Other structural hardware</p> <p>06 Construction materials</p> <p>04 FURNITURE GROUP</p> <p>01 Hardware</p> <p>02 Materials</p> <p>03 Lighting device</p> <p>04 Decorative furnishings</p> <p>05 ARMS GROUP</p> <p>01 Projectiles</p> <p>02 Cartridge case</p> <p>03 Arms accessories</p> <p>04 Gun parts</p> <p>06 CLOTHING GROUP</p> <p>01 Apparel</p> <p>02 Ornamentation</p> <p>03 Mending and repair</p> <p>04 Fasteners</p> <p>07 PERSONAL GROUP</p> <p>01 Coins</p> <p>02 Keys</p> <p>03 Writing paraphernalia</p> <p>04 Grooming and hygiene</p> <p>05 Personal ornamentation</p> <p>06 Other personal items</p> <p>08 TOBACCO PIPE GROUP</p> <p>01 Kaolin pipe class</p> <p>02 Nonkaolin pipe</p> <p>03 Smoking accessories</p> | <p>09 ACTIVITIES GROUP</p> <p>01 Construction tools</p> <p>02 Farm tools</p> <p>03 Leisure activities</p> <p>04 Fishing gear</p> <p>05 ---</p> <p>06 ---</p> <p>07 Pottery class</p> <p>08 Storage items</p> <p>09 ---</p> <p>10 Stable and barn</p> <p>11 Miscellaneous hardware</p> <p>12 Specialized activities</p> <p>13 Military objects</p> <p>14 Housekeeping</p> <p>15 Public services</p> <p>10 PREHISTORIC GROUP</p> <p>01 Hunting and fishing activities</p> <p>02 Domestic activities</p> <p>03 Stone working</p> <p>04 Wood working</p> <p>05 Digging tools</p> <p>06 Other fabricating or processing tools</p> <p>07 Other general utility tools</p> <p>08 Ceremonial & ornamental</p> <p>09 Miscellaneous</p> <p>11 SAMPLES</p> <p>-- Charcoal samples for radiocarbon dating</p> <p>-- Flotation samples</p> <p>-- light fraction</p> <p>-- heavy fraction</p> <p>-- Soil samples</p> <p>98 UNSPECIFIED GROUP</p> |
|--------------------------------------------------------------------------------------------------------------------------------------------------------------------------------------------------------------------------------------------------------------------------------------------------------------------------------------------------------------------------------------------------------------------------------------------------------------------------------------------------------------------------------------------------------------------------------------------------------------------------------------------------------------------------------------------------------------------------------------------------------------------------------------------------------------------------------------------------------------------------------------------------------------------------------------------------------------------------------------------------------------------------------------------------------------------------------------------------------------------------------------------------------------------|---------------------------------------------------------------------------------------------------------------------------------------------------------------------------------------------------------------------------------------------------------------------------------------------------------------------------------------------------------------------------------------------------------------------------------------------------------------------------------------------------------------------------------------------------------------------------------------------------------------------------------------------------------------------------------------------------------------------------------------------------------------------------------------------------------------------------------------------------------------------------------------------------------------------------------------|

MATERIALS - COMMON LIST (CLASSIFIED)

- | | |
|-----------------------------------------------------------------------------------------------------------------------------------------------------------------------------------------------------------------------------------------------------------------------------------------------------------------------------------------------------------------------------------------------------------------------------------------------------------------------------------------------------------------------------------------------------------------------------------------------------------------------------------------------------------------------------------------------------------------------------------------------------------------------------------------------------------------------------------------------------------------------------------------------------------------------------------------------------------------------------------------------------------------------------------------------------------------------------------------------------------------------|-----------------------------------------------------------------------------------------------------------------------------------------------------------------------------------------------------------------------------------------------------------------------------------------------------------------------------------------------------------------------------------------------------------------------------------------------------------------------------------------------------------------------------------------------------------------------------------------------------------------------------------------------------------------------------------------------------------------------------------------------------------------------------------------------------------------------------------------------------------------------------------------------------------------------------------------------------------------------------------------------------------------------------------------------------------------------------------------------------|
| <p>INORGANIC MATERIALS</p> <p>CERAMIC</p> <p>001 Porcelain</p> <p>002 Stoneware</p> <p>003 Earthenware</p> <p>004 Whiteware/ironstone/granite</p> <p>134 Undifferentiated ceramic</p> <p>CLAY</p> <p>047 Clay</p> <p>042 Kaolin</p> <p>079 Red clay</p> <p>CONSTRUCTION</p> <p>069 Brick</p> <p>071 Cement</p> <p>070 Mortar</p> <p>072 Plaster</p> <p>GLASS</p> <p>013 Milk glass</p> <p>078 Glass</p> <p>112 Slag and clinker</p> <p>METALS</p> <p>005 Tin</p> <p>019 Silver</p> <p>021 Gold</p> <p>026 Cuprous metal</p> <p>028 Ferrous alloy</p> <p>029 Aluminum</p> <p>032 Steel</p> <p>034 Lead</p> <p>035 Chrome</p> <p>096 Mercury</p> <p>136 Undifferentiated metal</p> <p>STONE</p> <p>129 Agate</p> <p>075 Asbestos</p> <p>133 Chalk</p> <p>052 Chert</p> <p>042 Granite</p> <p>046 Gravel</p> <p>109 Jet</p> <p>038 Limestone</p> <p>041 Marble</p> <p>049 Mica</p> <p>058 Obsidian</p> <p>057 Ochre</p> <p>068 Precious stone</p> <p>053 Quartz</p> <p>054 Quartzite</p> <p>039 Sandstone</p> <p>044 Shale</p> <p>040 Slate</p> <p>060 Soapstone</p> <p>043 Schist</p> <p>126 Undifferentiated stone</p> | <p>ORGANIC MATERIALS</p> <p>CELLULOSIC</p> <p>115 Bark</p> <p>108 Burlap</p> <p>128 Charcoal</p> <p>092 Cork</p> <p>087 Cotton</p> <p>131 Fiberboard/masonite</p> <p>085 Hemp</p> <p>011 Paper</p> <p>006 Wood</p> <p>121 Cellulose seeds/seed covering</p> <p>CONSTRUCTION</p> <p>093 Asphalt</p> <p>125 Formica</p> <p>101 Linoleum</p> <p>102 Tar paper</p> <p>WAX</p> <p>076 Wax</p> <p>GUM/RESIN</p> <p>010 Rubber, elastic</p> <p>009 Rubber, hard</p> <p>PETROCHEMICALS</p> <p>073 Carbon</p> <p>095 Coal</p> <p>048 Graphite</p> <p>116 Tar</p> <p>PROTEIN</p> <p>118 Chitin (arthropod, exoskeleton)</p> <p>106 Felt</p> <p>122 Flesh</p> <p>016 Hair</p> <p>117 Keratin (horns/tingamut/claws)</p> <p>015 Leather</p> <p>107 Silk</p> <p>090 Sponge, natural</p> <p>105 Wool</p> <p>COMBINATION MATERIALS</p> <p>017 Bone</p> <p>132 Ivory</p> <p>067 Pearl</p> <p>089 Shell</p> <p>SYNTHETIC MATERIALS</p> <p>103 Celluloid</p> <p>088 Nylon</p> <p>008 Plastic</p> <p>077 Soap</p> <p>091 Sponge, synthetic</p> <p>104 Synthetic</p> <p>TEXTILE</p> <p>151 Undifferentiated textile</p> |
|-----------------------------------------------------------------------------------------------------------------------------------------------------------------------------------------------------------------------------------------------------------------------------------------------------------------------------------------------------------------------------------------------------------------------------------------------------------------------------------------------------------------------------------------------------------------------------------------------------------------------------------------------------------------------------------------------------------------------------------------------------------------------------------------------------------------------------------------------------------------------------------------------------------------------------------------------------------------------------------------------------------------------------------------------------------------------------------------------------------------------|-----------------------------------------------------------------------------------------------------------------------------------------------------------------------------------------------------------------------------------------------------------------------------------------------------------------------------------------------------------------------------------------------------------------------------------------------------------------------------------------------------------------------------------------------------------------------------------------------------------------------------------------------------------------------------------------------------------------------------------------------------------------------------------------------------------------------------------------------------------------------------------------------------------------------------------------------------------------------------------------------------------------------------------------------------------------------------------------------------|

APPENDIX 2

B. Table for Data Base Coding Chart: Groups and Classes

GROUPS AND CLASSES

01 KITCHEN	SAMPLE ARTIFACTS
01 Dishes	Plate, cup, salt cellar
02 Containers	Bottle glass fragments
03 Tableware	Eating utensils
04 Kitchenware	Cooking utensils, pot, kettle
02 FAUNA/FLORAL GROUP	
01 Mammalia	Mammal
02 Aves	Bird
03 Reptilia	Reptile
04 Amphibia	Amphibian
05 Pisces	Fish
09 Other ethnofaunal/zoological	Oyster, crab, egg shells
16 Ethnobotanical	Seeds, nuts
03 ARCHITECTURAL GROUP	
01 Window glass	Window pane glass
02 Nails	Nails
03 Spikes	Railroad spikes
04 Door & Window hardware	Doorknob, door hinge
05 Other structural hardware	Pipe, fireplace tiles
06 Construction materials	Brick, mortar, roofing
04 FURNITURE GROUP	
01 Hardware	Handle, drawer pull, latch
02 Materials	Stove parts, chair part, bedframe
03 Lighting device	Candlestick, lamp base
04 Decorative furnishings	Flowerpot, clock parts, vase
05 ARMS GROUP	
01 Projectiles	Shot, bullets
02 Cartridge case	Cartridge
03 Arms accessories	Gun flints, bullet molds, powder horn
04 Gun parts	Pistol barrel, flintlock assembly
06 CLOTHING GROUP	
01 Apparel	Hat, coat, scarves, glove, shoe
02 Ornamentation	Beads, sequin, hatpin, feather
03 Making and Repair	Thimble, straight pin, scissors
04 Fasteners	Buttons, snaps, buckles, cufflink
07 PERSONAL GROUP	
01 Coins	Coins
02 Keys	Door lock keys, padlock keys
03 Writing paraphernalia	Quill, fountain pen nib, graphite pencil
04 Grooming & hygiene	Hairbrush, razor, mirror, tweezers
05 Personal ornamentation	Jewelry, ribbon, ornamental comb
06 Other personal items	Pocket watch, key chain, pocket knife

GROUPS AND CLASSES

08 TOBACCO PIPE GROUP	
01 Kaolin pipe	Kaolin pipe
05 Nonkaolin pipe	Comcob pipe
06 Smoking accessories	Snuff tin, cuspidor, tobacco tin, pipe cleaner
09 ACTIVITIES GROUP	
01 Construction tools	Axe head, drill bit, saw, paintbrush
02 Farm tools	Hoe, rake, plow blade
03 Leisure activities	Marbles, jaw's harp, doll parts
04 Fishing gear	Fish hooks, sinkers, crab trap
05 ---	
06 ---	
07 Pottery class	Indian water jar, effigy pot
08 Storage items	Clock, barrel staves, sacks
09 --	
10 Stable and barn	Stirrup, horseshoe, rein, harness belt
11 Miscellaneous hardware	Rope, bolts, nuts, washers, chain
12 Specialized activities	Button blanks, metallurgic debris, saggers
13 Military objects	Insignia, bayonets
14 Housekeeping	Broom, coat hanger, washboard
15 Public services	Sewer pipe, water pipe
10 PREHISTORIC GROUP	
01 Hunting and Fishing	Projectile point, atlatl hook
02 Domestic	Vessel, mortar, pestle
03 Stone working	Hammerstone, baton, flake, core
04 Wood working	Celt, grooved axe
05 Digging Tools	Hoe
06 Other fabricating or processing tools	Drill, chisel, needle
07 Other general utility tools	Knife, prismatic blade, chopper
08 Ceremonial & ornamental	Shell, goggle, bead
09 Miscellaneous	Function unknown

APPENDIX 2

C. Table for Data Base Coding Chart: Prehistoric Artifacts - Class and Morphology

Class 01: Hunting and Fishing Activities

01 - Projectile point
02 - Birdstone
03 - Bannerstone
04 - Boatstone
05 - Fish hook
06 - Netsinker
07 - Atlatl hook

Class 02: Domestic Activities

13 - vessel
14 - mortar
15 - pestle
16 - muller
17 - groundstone fragment

Class 03: Stone Working

21 - Hammerstone
22 - Baton
23 - Tine
24 - Splinter
25 - Drift or "punch"
26 - Anvil
27 - Flake, primary
28 - Flake, secondary
29 - Bifacial thinning flake
30 - Core
31 - Blank
32 - Tested piece

Class 04: Wood Working

37 - Celt
38 - Grooved axe
39 - Spokeshave

Class 16: Ethnobotanical

Seeds
Nuts

Class 06: Other Fabricating or Processing Tools

51 - Perforator
52 - Drill
53 - Awl
54 - Reamer
55 - Chisel
56 - Microperforator
57 - Needle
58 - Graver

Class 07: General Utility Tools

67 - Knife
68 - Side scraper
69 - Core scraper
70 - Stemmed end scraper
71 - Other end scraper
73 - Prismatic blade
74 - Chopper
75 - Utilized/Retouched flake
76 - Pitted pebble
77 - Gouge
78 - Maul
79 - Abrader
80 - Whetstone
81 - Biface
82 - Adze
83 - Distolateral scraper
84 - Bifacial end scraper
85 - Bifacial scraper

Class 08: Ceremonial & Ornamental Objects

85 - Angled pipe
86 - Tube
87 - Platform pipe
88 - Cloud blower pipe
89 - Sheet
90 - Plates
91 - Comb
92 - Bead
93 - Gorget
- - Hematite
- - Ochre

APPENDIX 2

D. Table for Data Base Coding Chart: Ambiguous Items of Material Culture

Note: The items listed below may be ambiguous or hard to place in a taxonomic category, but as a convention, for inventory purposes, will be coded as follows:

Unidentified wood fragments	98	00	006
Construction wood	03	06	006
Pegs, Wood planks	03	06	006
Twigs, branches	09	16	006
Burned wood (partial)	Code as wood (above) and put "burnt wood" in the comments section		
Charcoal and all small fragments of completely burnt wood	Code as charcoal		
Coal	98	00	095
Slag, burned coal, vitrified metalworking or manufacturing by-products	98	00	112
Pantiles	03	06	003
Delft fireplace tiles, wall skirting, etc.	04	04	003
Porcelain bathroom tiles, other bathroom furniture (tub, toilet, etc.)	03	05	001
Chamber pot	04	02	00-
Flowerpot	04	04	002 00-
Teeth	02	-	132
Fish scales	02	09	118
Coral	04	04	119
Eggshell	02	09	119
Seeds, seed covering	02	16	121
Schist (construction)	03	06	043
Schist (unidentified)	98	00	043
Red brick	03	06	169
Yellow brick	03	06	155
Linoleum	03	06	101
Metal hardware (probably construction)	03	06	()
Furniture hardware	04	01	()
Miscellaneous hardware (other and unidentified including screws, car parts)	09	11	()
Leather shoe parts	06	01	015
Unidentified leather scraps	98	00	015
Leather personal items	07	()	015

100 JAY STREET
LOTS 24, 26 and 27
KINGS COUNTY, NEW YORK
ARTIFACT INVENTORY

Context	Gp	Cl	Mph	Mat	Identity	Count	Weight	Comments	Reference	Range	Cat
=====	==	==	==	==	=====	=====	=====	=====	=====	=====	==
** Context 4006.06											
4006.06	01	02			008 Bottle band	1	0.0	White plastic STA-FAST/N E in diamond Y/STERILIZED			5
4006.06	01	02			008 Bottle band	1	0.0	Red band over white band SOLID SET/TRADEMARK/STERILIZED/N.Y.U :S.A.			5
4006.06	01	02	006	078	Milk bottle	1	0.0	Complete Clear Embossed 4//1 QT/SHEFFIELD//SHEFFIELD/REGIST ERED/MTC			5
4006.06	07	03	013	078	Ink bottle	1	0.0	Complete Clear Machine made Cylindrical body Rolled lip			5
** Subtotal **						4	0.0				
** Context 4007.06											
4007.06	01	02			078 Bottle glass	1	0.0	Light aqua Cylindrical body Embossed: S. LIEBMANN'S SONS/BRC. CO/N.Y.			5
4007.06	01	02	008	078	Bottle glass	1	0.0	Base embossed: KH 07 star Complete Clear Patent lip Philadelphia oval base Embossed "Brockway/7"	Jones & Sullivan 1985:39	1904+	5
4007.06	03	05	031	001	Insulator	1	0.0	Machine made Embossed: RT & SLO?			6
4007.06	07	04	040	013	Jar	1	0.0	Milk glass Screw top Cylindrical body Base embossed: MUSTEROLE CLEVELAND	Fike 1987:174	est. 1906+	6
** Subtotal **						4	0.0				
** Context 4008.04											
4008.04	01	01			003 Yellowware	1	0.0	Base Bowl/mug Manganese interior & exterior under clear glaze			6
4008.04	01	01			004 Ironstone	1	0.0				6
4008.04	01	02			078 Bottle glass	1	0.0	Emerald Cylindrical body Embossed: G.V DEMOTT/5 stars/DEM			6
4008.04	01	02	004	078	Bottle glass	1	0.0	Complete Light green Cylindrical body Blob lip Embossed: CREAM SODA//F.K./1860/BROOKLYN			6
4008.04	01	02			078 Bottle glass	1	0.0	Two piece mold Complete Aqua Blob lip Two piece mold Cylindrical body Embossed: M.B & CO./145/WEST 35TH ST./NY/1861			6
4008.04	01	02	002	078	Bottle glass	1	0.0	Complete Emerald Blob lip Squat cylindrical body Embossed: J. HUBENER/BROOKLYN//PHILADELPHIA /XXX/PORTER & ALE	Spillman 1983:56	1840-1875	6

100 JAY STREET
LOTS 24, 26 and 27
KINGS COUNTY, NEW YORK
ARTIFACT INVENTORY

Context	Gp	Cl	Mph	Mat	Identity	Count	Weight	Comments	Reference	Range	Cat
=====	==	==	==	==	=====	=====	=====	=====	=====	=====	==
** Subtotal **						6	0.0				
** Context 6001.01											
6001.01	01	01		001	Porcelain	1	0.0				
6001.01	01	01	004	004	Hotelware	1	0.0	Cup 50% Handle broken			
6001.01	01	02		002	Stoneware	1	0.0	Lid w/finial			
6001.01	01	02	008	078	Bottle glass	1	0.0	Bristol glaze, sponged blue Complete. Clear w/cork Two piece vertical mold w/separate base Philadelphia oval Prescription lip Embossed: M. & S. ARENSBERG/Wholesale and Retail Druggists/BROOKLYN, NEW YORK			
6001.01	01	02		078	Bottle glass	1	0.0	Complete Clear Machine made Cylindrical body, base & neck Club sauce finish w/partial cork			
6001.01	01	02	006	078	Milk bottle	1	0.0	Clear Embossed: 4/SHEFFIELD/REG-U S-PAT. OFF./1 QT//4/SHEFFIELD FARMS CO INC/SHEFFIELD/REG-U S-PAT.OFF./NEW YORK			
6001.01	01	04	004	033	Kettle	1	0.0	Lid w/handle White enamel Rusted			
6001.01	03	06	001	070	Mortar	1	0.0	Surface embedded w/circular porcelain tiles			
** Subtotal **						8	0.0				
** Context 6002.07											
6002.07	01	01		001	Porcelain	1	0.0				3
6002.07	01	01		003	Redware	1	0.0	Clear glaze interior Unglazed exterior			3
6002.07	01	01		003	Staffordshire?	1	0.0	Rim mug/bowl Iron oxide streaked interior			3
6002.07	01	01		003	Pearlware	1	0.0	Spall			3
6002.07	01	01	004	004	Ironstone	1	0.0	Cup rim			3
6002.07	01	01		004	Ironstone	1	0.0	Underglaze transfer print blue			3
6002.07	01	01		004	Ironstone	1	0.0	Spall			4
6002.07	01	01	001	004	Ironstone	1	0.0	Plate brim? Underglaze transfer print red			4
6002.07	01	01	004	004	Ironstone	1	0.0	Cup rim			4
6002.07	01	01	031	004	Ironstone	1	0.0	Handle broken off			4
6002.07	01	02		078	Container glass	2	0.0	Brown			2
6002.07	01	02		078	Container glass	1	0.0	Lime green			2
6002.07	01	02		078	Bottle glass	3	0.0	Clear Embossed letters			2
6002.07	01	02		078	Bottle glass	1	0.0	Clear Molded			2
6002.07	01	02		078	Bottle glass	1	0.0	Base Clear Ovoid Embossed letters			2
6002.07	01	02		078	Container glass	1	0.0	Opaque aqua			2
6002.07	01	02		078	Bottle glass	1	0.0	Lip Kelly green Downtooled lip Olive green			2
6002.07	01	02		078	Container glass	1	0.0	Clear			3
6002.07	01	02		078	Container glass	1	0.0	Pale aqua tint			3
6002.07	01	02		078	Container glass	1	0.0	Light green tint			3
6002.07	02	01		017	Bone	1	0.0	Mammal			1
6002.07	02	01		017	Teeth	1	0.0	Mammal molars			1
6002.07	02	02		017	Bone	1	0.0	Avian?			

100 JAY STREET
LOTS 24, 26 and 27
KINGS COUNTY, NEW YORK
ARTIFACT INVENTORY

Context	Gp	Cl	Mph	Mat	Identity	Count	Weight	Comments	Reference	Range	Cat
=====	==	==	==	==	=====	=====	=====	=====	=====	=====	=====
6002.07	02	09			089 Shell	1	0.0	Oyster			1
6002.07	03	01	001	078	Flat glass	2	0.0	Light green tint			2
6002.07	03	06			006 Construction wood	1	0.0				1
6002.07	03	06	012	041	Tile	1	0.0	White glazed			4
6002.07	03	06	015	069	Brick	1	0.0	Red			1
6002.07	04	01	017	028	Hook	1	0.0	Screw-in			1
6002.07	04	02	018	078	Flat glass	1	0.0	Clear			2
								Ridged			
6002.07	09	03			078 Orb	1	0.0	Dark blue			3
6002.07	09	03	022	103	Film	1	0.0	Leader			1
6002.07	09	11	012	025	Wire	1	0.0	Cuprous			1
6002.07	09	11			028 Metal bar	1	0.0	Corroded			1
6002.07	98				095 Coal	2	0.0				1
** Subtotal **						41	0.0				
** Context 6003.01						1					
6003.01	01	01	001	001	Porcelain	1	0.0	Plate			4
6003.01	01	01	001	004	Ironstone	1	0.0	Plate			4
								Partial maker's mark underglaze stamped black			
6003.01	01	01	042	078	Mug	1	0.0	Clear glass			4
6003.01	01	02	008	078	Bottle glass	2	0.0	Press paneled/diamond	Jones & Sullivan 1985:28	ca. 1850-1920s	4
								Mend			
								Pale aqua			
								Ovoid base			
								Downtooled lip			
								Cup bottom mold			
								2-piece vertical mold			
								Shoulders embossed:			
6003.01	01	02	008	078	Bottle glass	1	0.0	Aqua	Jones & Sullivan 1985:27	ca. 1750-1880	4
								Ovoid base			
								Sloppily applied downtooled lip			
6003.01	07	03	013	078	Ink bottle	1	0.0	Two-piece mold			5
								Complete			
								Aqua			
								8-paneled			
								Umbrella ink			
								Rolled lip			
								w/pontil			
** Subtotal **						7	0.0				
** Context 6004.01						1	0.0				
6004.01	01	01			004 Ironstone	1	0.0				5
6004.01	01	02			078 Bottle glass	1	0.0	Clear			5
								Molded rings exterior			
6004.01	02	01			017 Bone	2	0.0	Ribs			5
** Subtotal **						4	0.0				
*** Total ***						74	0.0				