

2766 R

ARCHAEOLOGICAL FIELD TESTING
SOBEL COURT PARK
BLOCK 2877, LOTS 18 AND 105
BOROUGH OF RICHMOND
CEQR No. 95-DCP-015R

by
ARNOLD PICKMAN

Submitted To
New York City Department of Parks and Recreation

November 1995

796

TABLE OF CONTENTS

I.	INTRODUCTION	1
	A. Background	1
	B. Procedures	1
II.	RESULTS OF FIELD TESTING	3
	A. Site Stratigraphy - Fill Deposits	3
	B. Site Stratigraphy - Possible Former Ground Surface	4
	C. Tests Encountering Architectural and Other "Features"	5
	1. Tests Near House Site	
	a. Shovel Tests 27 and 28 - Brick Extension Wall	5
	b. Shovel Test 29 - Deposit West of Brick Wall	6
	c. Shovel Test 26 - Stone Wall	7
	2. Tests Near Outbuilding Sites	8
	a. Shovel Test 15 - Outbuilding #1 Wall	8
	b. Surface Finds Near Shovel Test 15 and Excavation of Shovel Test 33	8
	c. Shovel Test 32 - Outbuilding #3 Deposit	10
	3. Other Outbuildings	11
III.	CONCLUSIONS AND RECOMMENDATIONS	13
	A. Summary - Prehistoric Deposits	13
	B. Summary - Historic Period Deposits	13
	C. Recommendations	14

REFERENCES CITED	15
------------------	----

FIGURES AND PLATES - FOLLOWING TEXT:

Figures:

- Figure 1 - Project Location Map
- Figure 2 - Location of Shovel Tests
- Figure 3 - 1907 Borough of Richmond Topographic Map
- Figure 4 - 1917 Sanborn Map
- Figure 5 - Location of Possible Future Archaeological Testing

Plates:

- Plate 1 - Brick Wall - Shovel Test 27
- Plate 2 - Brick at Base of Shovel Test 28
- Plate 3 - Cinder Deposit - Shovel Test 29
- Plate 4 - Stone Walls - Shovel Test 26
- Plate 5 - Stone Wall - Shovel Test 15
- Plate 6 - Stone Wall - Shovel Test 15 (Detail)
- Plate 7 - Cinder Deposits - Shovel Test 32

APPENDIX A - Shovel Test Stratigraphy and Artifact Inventory

Shovel Test 1	A-1
Shovel Test 2	A-2

Shovel Test 3	A-3
Shovel Test 4	A-5
Shovel Test 5	A-6
Shovel Test 6	A-7
Shovel Test 7	A-8
Shovel Test 8	A-10
Shovel Test 9	A-11
Shovel Test 10	A-12
Shovel Test 11	A-13
Shovel Test 12	A-14
Shovel Test 13	A-15
Shovel Test 14	A-16
Shovel Test 15	A-17
Surface Finds West of Shovel Test 15	A-17
Shovel Test 16	A-18
Shovel Test 17	A-20
Shovel Test 18	A-21
Shovel Test 19	A-22
Shovel Test 20	A-24
Shovel Test 21	A-25
Shovel Test 22	A-26
Shovel Test 23	A-27
Shovel Test 24	A-29
Shovel Test 25	A-30
Shovel Test 26	A-31
Shovel Test 27	A-33
Shovel Test 28	A-35
Shovel Test 29	A-36
Shovel Test 30	A-38
Shovel Test 31	A-39
Shovel Test 32	A-40
Shovel Test 33	A-42
Shovel Test 34	A-44
Shovel Test 35	A-45
Shovel Test 36	A-46

I. INTRODUCTION

A. Background

The New York City Department of Parks and Recreation is planning to create a new park, to be known as Sobel Court Park, on an approximately 1.1 acre parcel located in the Fox Hills area of Staten Island (Figure 1). The site comprises Lots 18 and 105 on Block 2877 in the Borough of Richmond, and is bounded on the northwest by Vanderbilt Avenue and on the east by Oder Avenue. A small portion of the west side of the property is bounded by Targee Street (see Figure 2).

An archaeological assessment of the project site is being conducted in accordance with New York City's Environmental Quality Review procedures. As part of this assessment an archaeological documentary study of the proposed Park site was completed in August 1995 (Pickman 1995a).

The documentary study concluded that portions of the project site may contain possibly significant archaeological resources. Such resources could be associated with possible prehistoric and historic period occupations of the site.

Prehistoric archaeological sensitivity of the site was indicated by the presence of a reported Native American site within or in the immediate vicinity of the project site and by its topographic and physiographic characteristics, which are similar to those of locations where prehistoric campsites have been found elsewhere on Staten Island.

Historic period sensitivity was indicated by the presence of a domestic structure and outbuildings on the site beginning in the 1850's. The house may have been occupied from this time through the 1870's by J. A. H. Britton, a farmer and a member of one of the Old Staten Island families; from the late 1870's through 1909 by John Schaible, a retired German immigrant and by his son, a watchmaker; and from 1909 through at least 1929 by Thomas W. Nunley, an amusement park operator, and his family.

The documentary study recommended that archaeological field testing be conducted, and upon approval of these recommendations by the New York City Landmarks Preservation Commission, a scope of work for this testing was submitted in October 1995 (Pickman 1995b) and subsequently approved.

B. Procedures

The field testing described in this report was conducted according to the proposal submitted to the New York City Department of Parks and Recreation in May 1995 and was restricted to the excavation of manual shovel tests. The use of power

equipment to remove overburden was not within the scope of the proposal or of the approved scope of work. The scope of work specified that the need for further site examination using such equipment would be assessed based on the results of the manual testing and included in the recommendations of the manual testing report.

The approved testing plan called for the conduct of 25-30 shovel tests to be placed according to the relative sensitivity of the various portions of the project site, as determined by results of the documentary study. A total of 36 shovel tests were actually conducted. The test locations are indicated on Figure 2. Each shovel test covered approximately 1 - 1 1/2 square feet of surface area, with the area included within the boundary of the test decreasing with depth. Most of the shovel tests were excavated until strata interpreted as representing sterile, glacially deposited subsoil were encountered. In a few cases (S. T. 6, 28, 30) tests were terminated before the subsoil was encountered due to the presence of rocks, mortar or brick at the base of the excavation. In one shovel test (S.T. 29) cultural deposits continued below the base of the test, as discussed in the following chapter.

Soil excavated from the shovel tests was screened through 1/4" mesh. Cultural materials recovered were returned to the laboratory, cleaned, identified and tabulated. The stratigraphy encountered in each test and the cultural materials recovered from each stratum are indicated in Appendix A. In some instances, noted in the Appendix, a sample of coal/cinder/slag and other materials was retained with additional material being discarded in the field.

The many small pieces of glass encountered in the tests, have, in general, been tabulated as flat or curved glass. Most of the curved glass probably represents bottle glass, but could also derive from glass tableware. Most flat pieces probably represent window glass, but could also derive from flat-sided medicine-type bottles, or represent small pieces of generally curved glassware.

Most nails recovered were corroded. Where possible these were identified as cut or wire nails. Although wire nails were first manufactured in the United States in the 1850's they were not in common use until later in the 19th century and did not supplant cut nails as the dominant type in use until the 1890's (Nelson 1968).

II. RESULTS OF FIELD TESTING

A. Site Stratigraphy - Fill Deposits

In all of the shovel tests conducted the uppermost strata consisted of recently deposited humic material and strata of mixed soil types representing fill material. These strata extended to depths which ranged from nine to 19 inches below the present surface. They yielded varying quantities of "modern" material including plastic, modern bottle glass and bottle caps, etc. Much of this material probably derives from the use of the property by community residents. These strata also contain building materials (e.g. brick, mortar, nails, window glass), which probably derive from the demolition of the domestic structure which stood on the site. Comparison of Sanborn maps dating to 1951 and 1972 indicate that demolition occurred between these dates. At this time the site was apparently graded resulting in the deposition of the "fill" strata. As noted below, at some locations this grading resulted in the removal of the topsoil layer which existed at that time. At other locations the topsoil layer remained partially intact with "fill" resulting from the grading activities deposited over it.

In most of the shovel tests the recent humus and fill deposits included few artifacts which may be associated with the domestic occupation of the property in the late 19th and early 20th centuries. Such artifacts include a few ceramic sherds of types which appear to be consistent with manufacture during this period (S.T. 13 and S.T. 6) and fragments of carbon rods of the type used in early electrical equipment (S.T. 16 & S.T. 23). However, the fill deposits in two tests, S.T. 33 and S.T. 36 contained substantial concentrations of domestic material. Shovel test 33 yielded substantial quantities of faunal material representing food remains. This test will be discussed further below (see section C/2/d).

In shovel test 36 the uppermost four inches of the stratigraphic sequence consisted of recent sod, topsoil and/or fill (strata I and II). These deposits yielded 41 ceramic sherds deriving from at least three different whiteware/ironstone vessels. The decoration on these sherds would appear to be consistent with manufacture of these vessels during the 19th or early 20th centuries. The five pieces of layered glass recovered from this deposit would also be consistent with manufacture during this period. This was the only deposit encountered by the shovel testing which contained a high density of ceramic sherds. The underlying six inch thick fill stratum (stratum III) yielded coal/cinder and slag but few other artifacts. Stratum IV, a four inch thick deposit of gray/brown sandy silt may represent the remnants of an earlier topsoil layer as discussed below. This stratum yielded a large undecorated whiteware/ironstone rim sherd but also contained several pieces of plastic and styrofoam. It was underlain by transitional and subsoil layers.

The ceramic sherds recovered from strata I and II in S.T. 36 apparently do not represent an in situ deposit, nor is it likely that they were recently deposited. The location of shovel test 36 is several feet northeast of a large tree and it is possible that the tree roots displaced these artifacts from their original stratigraphic context; possibly a midden deposit or feature which may have been formerly present in this area. However, in this event it would be expected that bone and other domestic/personal artifacts would have been recovered. It is possible that the ceramic sherds recovered from shovel test 36 derive from sheet refuse associated with the occupation of the structure located immediately north of the project site on the west side of Oder Avenue. Such refuse may have been displaced from its original location during the grading of the site. The examination of the 1917 and 1937 Sanborn maps included in the documentary study (Pickman 1995a; Figures 25 and 26) indicate that this structure was built between these dates. It is now abandoned. The ceramics recovered from S.T. 36 are considered to be not inconsistent with manufacture during the 1920's period.

A small fractured quartz cobble recovered from the fill deposit in shovel test 35 included some additional battering along one edge. Although this fracturing could possibly derive from prehistoric Native American aboriginal activity, it is more likely that it occurred as a result of the cobble being struck by equipment during demolition and grading activities on the site.

B. Site Stratigraphy - Possible Former Ground Surface

In 12 of the shovel tests (S.T. 2, 6, 9-11, 16-19, 23, 25 and 31) the fill deposits were immediately underlain by the culturally sterile subsoil, which in general is yellow, tan, or gray in color and ranges in texture from sandy silt to silty clay. At these test locations the topsoil representing the ground surface prior to the deposition of the fill was apparently removed during the demolition and grading episodes which resulted in the deposition of this fill.

In 16 of the tests (S.T. 3-5, 7-8, 12-15, 20-22, 24, 33-34 and 36) the fill was underlain by strata which may represent remnants of the previous topsoil layer. The remaining portion of this layer encountered by these tests ranged from 2 - 10 inches in thickness. In most locations, it appears to have been truncated or disturbed, apparently during the demolition and grading noted above. In some of the tests where this layer was encountered, a transitional mottled layer was noted between it and the underlying subsoil. The remnants of the former topsoil layer yielded relatively few artifacts. Only a few ceramic sherds recovered from this deposit would appear to possibly have 19th or early 20th century manufacturing dates.

Tests 3, 4 and 5 were placed approximately 20-30 feet east of the estimated location of the rear of the house which stood on lot

105 from the 1850's through the mid-20th century. The compact stratum which is interpreted as representing the former topsoil layer in this area (stratum IV in S.T. 3 and 5; stratum III in S.T. 4) was encountered at 14 - 16 1/2 inches below the present surface. In S.T. 3 it yielded five whiteware sherds, two of which have molded decorative elements consistent with manufacture in the late 19th - early 20th century period. Only a few other domestic artifacts were recovered from this layer in these three tests, however. In these tests, a 2 - 5 1/2 inch thick ashy deposit was encountered between the overlying fill and underlying former topsoil layer. Again, in S.T. 3 a few ceramic sherds were recovered from this deposit which may have been associated with the occupation of the house. As with the underlying topsoil, few other domestic artifacts were recovered from this deposit.

In addition to the ceramics from S. T. 3, noted above, the only other probable 19th - early 20th century ceramic sherds recovered from the former topsoil layer include a small sherd which appears to be buff-bodied slipware, recovered from S.T. 24 (stratum III), a small sherd which may represent an early form of whiteware or pearlware from S.T. 13 (stratum II), and five sherds of annular decorated yellow earthenware from S.T. 22 (stratum II).

C. Tests Encountering Architectural and Other "Features"

Six of the shovel tests encountered remnants of the 19th century house and outbuildings which formerly stood on lot 105 and/or associated deposits.

1. Tests Near House Site

a. Shovel Tests 27 and 28 - Brick Extension Wall

Shovel tests 26 and 27 were excavated to test the area located immediately to the rear of the house as shown on the 1907 Borough of Richmond topographic map (see Figure 3).

At a depth of 10 inches below the existing surface, beneath the overlying fill (Strata I and II); shovel test 27 encountered the top of an eight inch wide brick wall (see Plate 1). The orientation of this wall is parallel to the northern property boundary line and to the side of the house as shown on the 1907 map.

Comparison of the 1907 topographic map with the 1917 Sanborn map (Figure 4) suggests that between these two years an extension was added south of the house. The location of S.T. 27 suggests that the brick wall encountered in this test represents the western wall of this extension.

Shovel test 27 was continued downward along the eastern side of the brick wall. The outline of a disturbed area immediately adjacent to the wall, apparently associated with its construction, was noted in the test profile. At the top of the

brick wall this disturbed area extended outward some 6 inches, sloping inward toward the wall with depth. The presence of this "trench" disturbance suggests that the adjacent strata were deposited prior to the construction of the extension wall. No attempt was made to excavate the deposits within the disturbed area separately from the adjacent strata. The light gray silty clay encountered at the base of S.T. 27, at a depth of 32 inches below the surface appeared to represent the subsoil at this location. The brick wall and the adjacent disturbed area extend downward below this depth.

The black and dark brown clayey silt deposits encountered between 28 and 32 inches in shovel test 27 (strata Va and Vb) may represent the surface prior to the accumulation of the overlying deposits. The latter deposits, encountered between 10 and 28 inches below the surface (strata III and IV), may represent material which accumulated during construction or repair of the house at a time prior to construction of the brick extension wall between 1907 and 1917.

Most of the material recovered from the strata encountered in S.T. 27 below the top of the brick wall is construction/ demolition related (e.g. window glass, nails, mortar, and brick). However, a few pieces of mammal bone and a clam shell fragment were recovered. The shell and one of the bone fragments were recovered from the possible "surface" deposits between 28 and 32 inches.

Subsequent to the excavation of shovel test 27, S.T. 28 was placed approximately 12 feet east and six feet north of the wall exposed in the former test. At a depth of 13 inches, this test encountered brick (see Plate 2) which appeared to be "in situ." The test was abandoned at this point. The brick could be a portion of the rear wall of the extension. If so, however, this wall would be only some three inches (the width of one brick) wide. It is possible that this is, in fact, a loose brick contained within a fill deposit and not part of an in situ wall.

b. Shovel Test 29 - Deposit West of Brick Wall

Shovel test 29 was placed some three feet south of the brick wall encountered in S.T. 27, and two feet west of the location of the latter test.

At the location of S.T. 29 the uppermost fill deposit extended to a depth of 17 inches below the surface. At this depth the test encountered a deposit of gray black sandy silt with ash and wood. This deposit was tested to a depth of 29 inches below the surface, and it continued below this depth. A piece of cut slate was noted in the north wall of this test. It was uncertain if this represented a part of the structure or was merely debris included within the ash deposit (see Plate 3).

The deposit encountered in S.T. 29 yielded quantities of wood,

mortar/plaster, window glass, brick, nails and other construction/demolition materials, as well as coal/cinder and slag. Few domestic artifacts were recovered. A piece of styrofoam, possibly intrusive into the deposit, and two other pieces of synthetic material were also recovered. The presence of pieces of charred wood could suggest that the house may have been partially rebuilt following a fire.

A large brick fragment recovered from the cinder deposit included a portion of a raised manufacturer's brand mark "S&..." This would appear to be part of a similar mark ("S&F Co.") on a whole brick recovered from the surficial stratum in shovel test 20. According to De Noyelles (1982) the brand mark "S&F" was in use by the Sayre and Foster Company of Sayerville, New Jersey in 1905. De Noyelles does not indicate when this company began operation. Gurcke (1987) lists the mark "S&F Extra", which was used by this same company in 1935. Neither source lists the exact "S&F Co." mark found on the S.T. 20 brick.

The depth of the cinder deposit indicates that it is located within a "feature" excavated below the former ground surface. The nature of this "feature" is uncertain. The 1917 Sanborn map (Figure 4) shows a one-story shed or other extension south of the main portion of the building and west of the brick southerly extension represented by the brick wall encountered by S.T. 27. Shovel test 29 would appear to be at the approximate location of the one-story "shed" as shown on Figure 4. This extension may have had a basement or crawl space in which the cinder/ash deposit accumulated. However, the presence of a feature (e.g. privy) within this one-story "shed," which pre-dates the construction of the 1907-1917 extension is also possible.

c. Shovel Test 26 - Stone Wall

At a depth of 10 - 15 inches below the surface, shovel test 26 encountered two large stones which underlay the uppermost fill deposit. Examination of the small portion exposed in the shovel test suggested that these stones represent the basal portions of two "walls" oriented at right angles to each other (see Plate 4). The base of these "walls" was noted at a depth of 24 inches below the surface. The 1907 map (see Figure 3) shows two "pillar"-like constructions at the northeast and southeast corners of the house. The stones encountered in S.T. 26 could represent the northernmost of these constructions. However, although only portions of these stones were exposed, it appeared that their orientation would place them at an angle of some 35 degrees with the walls of the house.

Examination of the profiles of S.T. 26 indicated the presence of a disturbed area adjacent to both of the stone "walls" exposed in this test which apparently represents a portion of a trench excavated to install this stone feature. This "trench" extended outward for a distance of nine inches at the top of the stones, sloping inward to meet their bases of the stones.

The stratigraphy adjacent to the trench deposits consisted of a deposit of dark brown silty clay which extended from the base of the overlying fill to a depth of 25 inches. This may represent the former topsoil layer as discussed above. No attempt was made to excavate the topsoil and trench deposits separately. The culturally sterile white/gray silty clay which underlay both the dark brown silty clay and the wall trench deposits represents the subsoil at this location.

Artifacts recovered from the deposits underlying the uppermost fill consisted mainly of a moderate amount of building materials and coal/cinder/slag. Few domestic artifacts or faunal remains were recovered. These deposits yielded a fragment of a carbon rod, used in early electrical equipment (e.g. arc lamps), similar to the fragments recovered from the fill deposits as noted above. Pieces of a synthetic material which may be from a table covering or similar artifact were also recovered from this deposit.

2. Tests Near Outbuilding Sites

A number of tests were placed in the vicinity of the outbuildings shown on the 1907 topographic map. To facilitate reference, these have been numbered on the copy of this map included here as Figure 3. Examination of later Sanborn maps indicate that three of the outbuildings (#1 - #3) present in 1907 were demolished between 1917 and 1937 (see Figure 4 and Pickman 1995a, Figure 26), prior to the demolition of the domestic structure during the third quarter of the 20th century. The two small outbuildings designated as #4 and #5 are not shown on the 1917 Sanborn map (see Figure 4).

a. Shovel Test 15 - Outbuilding #1 Wall

Shovel test 15 was placed west of the existing concrete slab which appears to represent the floor of outbuilding #1, indicated as a 1 1/2 story frame structure on the 1907 map (Figure 3). The shovel test encountered the basal portion of a dry laid stone wall at a depth of 4 1/2 - 10 inches below the surface. The location of outbuilding #1 as shown on the map indicates that this represents the western foundation wall of this structure. The wall, which is approximately three feet in width, is shown on Plates 5 and 6. A few stones were removed during the excavation of S.T. 15, resulting in the depression in the central portion of the wall as shown on Plate 6.

The wall was overlain by the humus and fill deposits which constitute the uppermost portion of the stratigraphic sequence throughout the site as discussed above. Its eastern portion was immediately overlain by a deposit of gray brown sandy silt mixed with orange clayey silt and cinder/ash (stratum III). Shovel test 15 was extended east of the wall and continued downward adjacent to it. Stratum III continued next to the wall to a depth of some

12 inches. It was followed by stratum IVa, a 2 - 4 inch thick deposit of fill, and stratum IVb, a deposit of tan/brown clayey silt which may represent a former topsoil deposit. A deposit of yellow/tan clayey silt, apparently representing the subsoil at this location, was encountered at a depth of 19 inches. The base of the dry laid stone wall was noted at a depth of 27 inches below the surface.

The material recovered from all of the strata encountered below the top of the wall consisted largely of coal, cinder and slag as well as a few pieces of glass.

b. Surface Finds Near Shovel Test 15 and Excavation of Shovel Test 33

In the course of exposing the wall encountered in S.T. 15, a small space adjacent to its west side and extending outward a maximum of 10 inches was excavated. The material removed was not screened. Subsequent examination of the surface in this area indicated the presence of two artifacts which may have derived from the backdirt of this excavation. These consisted of the neck and base portions of what may be the same aqua medicine bottle. The characteristics of these bottle fragments suggest manufacture during the early portion of the period of occupation of the house which was constructed on this site during the 1850's. The base of the bottle has a pontil mark, which is characteristic of bottles manufactured prior to the introduction of the snap case. The latter device was invented in the 1850's and by the mid-1860's it was used in the manufacture of most bottles (Lorrain 1968; Munsey 1970). The neck has a "double ring neck finish" (Fike 1987). The lip was separately applied manually and the neck has swirling marks characteristic of the use of a "lipping" tool to apply the lip portion. This implement came into use by the 1850's (Lorrain 1968).

Because of the recovery of the 19th century bottle fragments, shovel test 33 was excavated some three feet west of the dry-laid stone west wall of outbuilding #1. In shovel test 33, stratum II, a layer of dark brown clayey silt with lenses of coal/slag and yellow/tan silt, was encountered between 4-10 inches, underlying the surface humus. Stratum II is interpreted as representing a part of the fill deposits encountered over most of the site. This stratum yielded 19 pieces of mammal and bird bone, some of which had butchering marks, and additional small bone fragments. Stratum II was immediately underlain by a two inch thick stratum of additional fill (stratum IV) which yielded five additional pieces of cut mammal bone and some smaller fragments. This fill was underlain by six inches of gray/brown clayey silt, probably representing an earlier ground surface as discussed above. This "surface" yielded only one additional piece of cut bone, as did the following transitional surface/subsoil stratum. None of the strata yielded a high density of other domestic material. The latter consisted mainly of a few pieces of curved glass, most of which derived from the fill strata.

The presence of the relatively high density of bone in the shovel test 33 fill deposits (strata II and III), the recovery of only a few pieces in the underlying strata interpreted as former topsoil and underlying transitional deposits, and the absence of high densities of faunal remains in the fill strata excavated in the other shovel tests, suggests that strata II and III may have been deposited during the grading of the immediate area, and that the bone may have derived from a deposit associated with the nearby outbuildings or other feature. The 19th century bottle glass noted above may have originally been contained within this same deposit.

The absence of large quantities of mammal bone within the "feature" deposit sampled by S.T. 32 (see below), located some 25 feet southwest of S.T. 33, suggests that this was not the source of the bone recovered from the latter test.

c. Shovel Test 32 - Outbuilding #3 Deposit

The 1907 map shows a small outbuilding (see Figure 3 - outbuilding #3) located south and west of the location of outbuilding #1. Shovel test 32 was excavated in a location calculated to be at the site of outbuilding #3.

The "recent" fill deposits in this test extended to a depth of 10 1/2 inches below the surface. The fill was underlain by a deposit of light gray ash, cinder and coal (stratum III) which extended to a depth of 18 1/2 inches (see Plate 7). This deposit yielded mostly coal, cinder and slag, small brick fragments and 13 nails, six of which were identifiable as wire nails. A single undecorated whiteware/ironstone sherd was the only domestic artifact recovered. This deposit was followed by a three inch thick stratum of red/brown sandy silt mixed with ash (stratum IV). As with the overlying deposit the material recovered from this stratum consisted mainly of coal/cinder/slag and construction/demolition debris. A single piece of mammal bone was the only domestic material recovered. This thin stratum was followed by a deposit of gray/brown sandy silt with cinder, ash and coal (stratum V) which extended from 21 1/2 to 34 inches below the surface. A stratum of yellow/gray silt which appeared to be the same subsoil deposit encountered in other shovel tests was visible at the base of the test at 34-35 inches below the surface.

As with the overlying deposits, stratum V contained coal/cinder/slag as well as nails and other construction/demolition material. However, unlike the overlying deposits it also yielded a high density of bottle glass and a few other domestic/personal artifacts, the latter including a fragment of pencil lead and a belt buckle. A single piece of mammal bone was also recovered. The 52 pieces of bottle glass recovered from the approximately 0.7 square feet of this deposit which was excavated by S.T. 32 included a rectangular base from a medicine-type

bottle and five clear glass sherds which mended together to form the base and part of the sides of a clear glass "Vaseline" jar. Other smaller fragments of this jar are most likely among those recovered.

The portion of the embossed trade mark "Ch(es)ebrough Mfg Co/Vaseline" is present on the side of the bottle represented by the fragments recovered from stratum V. Robert A. Chesebrough invented Vaseline in 1859 and the Chesebrough Mfg. Co was founded in 1880 to make this product. In 1955 the Chesebrough Company merged with the Pond's Extract Company (Fike 1977:56, 184). The jar represented by the fragments recovered from S.T. 32 were therefore manufactured between 1880 and 1955. Two whole machine-made screw-top "Vaseline" jars were recovered from an early 20th century deposit at the 123rd Precinct Station House site in the Huguenot section of Staten Island (Pickman 1992). According to Fike (1987:56) screw-top Vaseline jars replaced those with cork closures in 1908. The fragments recovered from S.T. 32 do not indicate the type of closure used with this jar. However, none of the fragments recovered from S.T. 32 appear to include screw-top threads. The embossed trade mark on the 123rd Precinct site screw-top jars differed from the partial mark present on the S.T. 32 fragments. A similar trade mark appears on the screw-top Vaseline jar illustrated by Fike (1987:189) as on the 123rd Precinct site examples. The mark on the screw-top jars included the manufacturer's name "Chesebrough", but not the complete name "Chesebrough Mfg. Co." which was present on the S.T. 32 fragments. The fragments recovered from S.T. 32 may represent the earlier type of jar which utilized the cork closure. pre 1908

The preponderance of wire nails among those recovered from the cinder and ash deposit in S.T. 32 suggest deposition toward the end of the 19th century or later.

The artifact-bearing deposit encountered by shovel test 32 was apparently deposited within a shallow "feature" excavated an estimated 2 1/2 feet below the surface. This "feature" may represent a shallow "crawl space" beneath the floor of outbuilding #3.

3. Other Outbuildings

In addition to outbuilding #3, noted above, three others are shown on the 1907 map (see Figure 3). The largest of these (outbuilding #2) is indicated as a shed on this map. Shovel test 34 was placed within the area occupied by this outbuilding, and shovel tests 19 - 21 were excavated in the area east of this structure and outbuilding #1. Shovel test 17 was placed in the vicinity of the location of the small, one-story outbuilding designated as #4. Shovel test 31 was placed in a wet, slightly depressed area in the vicinity of another small one-story outbuilding designated as #5. None of these tests encountered deposits which appear to be associated with the presence of structures or other features in these areas. It should be noted

that shovel test 31 immediately filled with water as it was being excavated. This suggests the possibility that a spring was present in this area, and the small structure shown on the 1907 map could possibly have represented a "spring house."

III. CONCLUSIONS AND RECOMMENDATIONS

A. Summary - Prehistoric Deposits

As noted in the documentary research report (Pickman 1995a), the files of the Staten Island Institute of Arts and Sciences contain reference to a prehistoric site in the vicinity of the project site. The presence of such a site would most likely be indicated by the presence of prehistoric ceramic sherds, stone tools, or waste flakes from the manufacture of these tools. With the possible exception of a battered quartz cobble contained within a disturbed fill deposit, no such artifacts were recovered from any of the shovel tests conducted.

The prehistoric site noted in the records may have been located elsewhere in the area but not within the project site boundaries. It is also possible that a small campsite was present within the project site, with all associated deposits having been removed during the course of the historic period occupation of the property and/or the additional disturbance caused by the subsequent demolition and grading activities.

B. Summary - Historic Period Deposits

The shovel testing conducted during this phase of the archaeological field examination indicates that structural remains of the 19th-early 20th century domestic structure and outbuildings remain intact beneath an overlying deposit of fill. These remains were encountered 4 1/2 - 10 inches below the present surface. They include the west wall of a brick extension to the house (shovel test 27), the dry-laid stone west wall of outbuilding #1 (shovel test 15), and an unidentified dry-laid stone construction apparently associated with the rear portion of the house (shovel test 27). The rear wall of the brick house extension may also have been encountered in shovel test #28.

A deposit containing a substantial density of bottle glass and a lesser quantity of other domestic/personal artifacts was encountered at the location of outbuilding #3 (shovel test 32). The deposit was present within an unidentified "feature" which apparently extended some 2 - 2 1/2 feet below the elevation of the former ground surface. The top of this "feature" deposit was encountered beneath 10 1/2 inches of overlying fill, with the artifact-bearing stratum within the feature at a depth of 21 1/2 inches below the present surface.

Another "feature" deposit containing mainly cinder and ash and construction/demolition debris was encountered west of the brick house extension wall noted above.

The nature of the architectural and artifact-bearing "features" encountered during the shovel testing could only be determined by

removing the overlying fill and exposing the walls of the house, outbuildings and other features present in the area.

It is likely that additional artifact-bearing features representing cisterns, privies, and/or wells remain intact on the site. It is expected that the remaining upper portion of such features would be encountered beneath the fill deposit which covers the site to a depth, at the locations tested, of 9 - 19 inches below the present surface. The presence of cut mammal and bird bone, as well as bottle glass probably dating to the third quarter of the 19th century in the fill deposits immediately west of outbuilding #1 suggests the possibility that additional features are present in this area.

The potential archaeological significance of deposits containing high densities of domestic artifacts and faunal material which may be present within such features was discussed in the scope of work for the present testing phase.

C. Recommendations

Based on the shovel test results and the probable locations of additional features associated with the 19th century occupation of the site, we have indicated the portion of the site in which such features are most likely to be present beneath the overlying fill deposits (see Figure 5). This area is located to the rear of the house as well as in the vicinity of outbuildings #1 - #3.

At present, the exact construction plans for Sobel Court Park are uncertain. However, if construction in the portion of the site indicated on Figure 5 will involve excavation below a depth of approximately 1 - 1 1/2 feet, additional archaeological examination of the areas to be disturbed should be undertaken.

This examination would involve the use of a backhoe to remove the overlying fill and, if necessary, the underlying topsoil remnants in order to expose structural walls and the walls of possible artifact-bearing features. Such features should then be tested manually for the presence of deposits containing significant densities of domestic and/or personal artifacts.

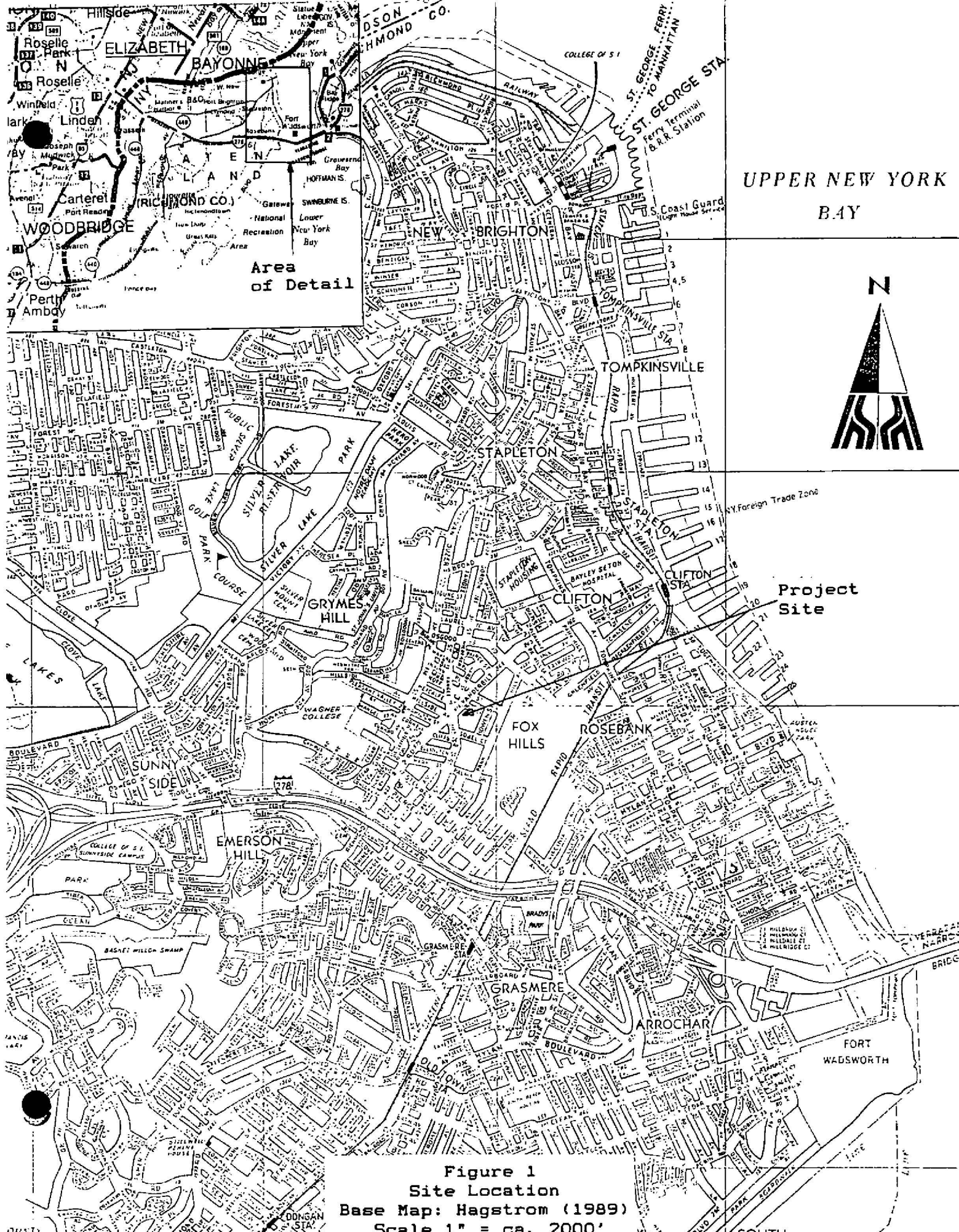
If construction will not involve excavation below an approximate depth of 1 - 1 1/2 feet within the portion of the site indicated on Figure 5, further archaeological investigations are not recommended.

REFERENCES CITED

- Borough of Richmond
1907 Topographical Survey Sheet #25. August 1907.
- De Noyelles, Daniel
1982 Within These Gates. Thiells, N.Y.: the author.
- Fike, Richard E.
1987 The Bottle Book: A comprehensive Guide to Historic Embossed Medicine Bottles. Salt Lake city: Gibbs M. Smith.
- Gurcke, Karl
1987 Bricks and Brickmaking: A Handbook for Historical Archaeology. Moscow, Idaho: The University of Idaho Press.
- Hagstrom Map Company, Inc.
1989 Hagstrom Map of Staten Island. Maspeth, New York
- Lorrain, Dessamae
1968 "An Archaeologists Guide to Nineteenth Century American Glass." Historical Archaeology II:35-43.
- Munsey, Cecil
1970 The Illustrated Guide to Collecting Bottles. New York: Hawthorne Books.
- Nelson, Lee
1968 "Nail Chronology as an Aid to Dating Old Buildings." History News. Vol. 24, No. 11.
- Pickman, Arnold
1992 "Archaeological Field Testing, New 123rd Precinct Stationhouse, Borough of Staten Island, Capital Project PO144-123, CEQR #91-038R". Report Submitted to New York City Department of General Services, Division of Design and Construction Management.
- 1995a "Archaeological Documentary Study, Sobel Court Park, Block 2877, Lots 18 AND 105, Borough of Richmond, CEQR No. 95-DCP-015R." Report Submitted to New York City Department of Parks and Recreation.
- 1995b "Scope of Work, Archaeological Field Testing,, Sobel Court Park, Block 2877, Lots 18 AND 105, Borough of Richmond, CEQR No. 95-DCP-015R." Report Submitted to New York City Department of Parks and Recreation.
- Sanborn Map Company
1917 Insurance Maps of Staten Island, Borough of Richmond, New York. Vol. I. Collection of the New York Public Library.

- 1937 Insurance Maps of Staten Island, Borough of Richmond, New York. Vol. III. Collection of the New York Public Library.
- 1951 Insurance Maps of Staten Island, Borough of Richmond, New York. Vol III. Updated from 1937. Collection of the New York Public Library.
- 1972 Insurance Maps of Staten Island, Borough of Richmond, New York. Vol. III. Updated from 1937. Collection of the New York Public Library.

FIGURES



UPPER NEW YORK
BAY



Project
Site

Figure 1
Site Location
Base Map: Hagstrom (1989)
Scale 1" = ca. 2000'

SOUTH

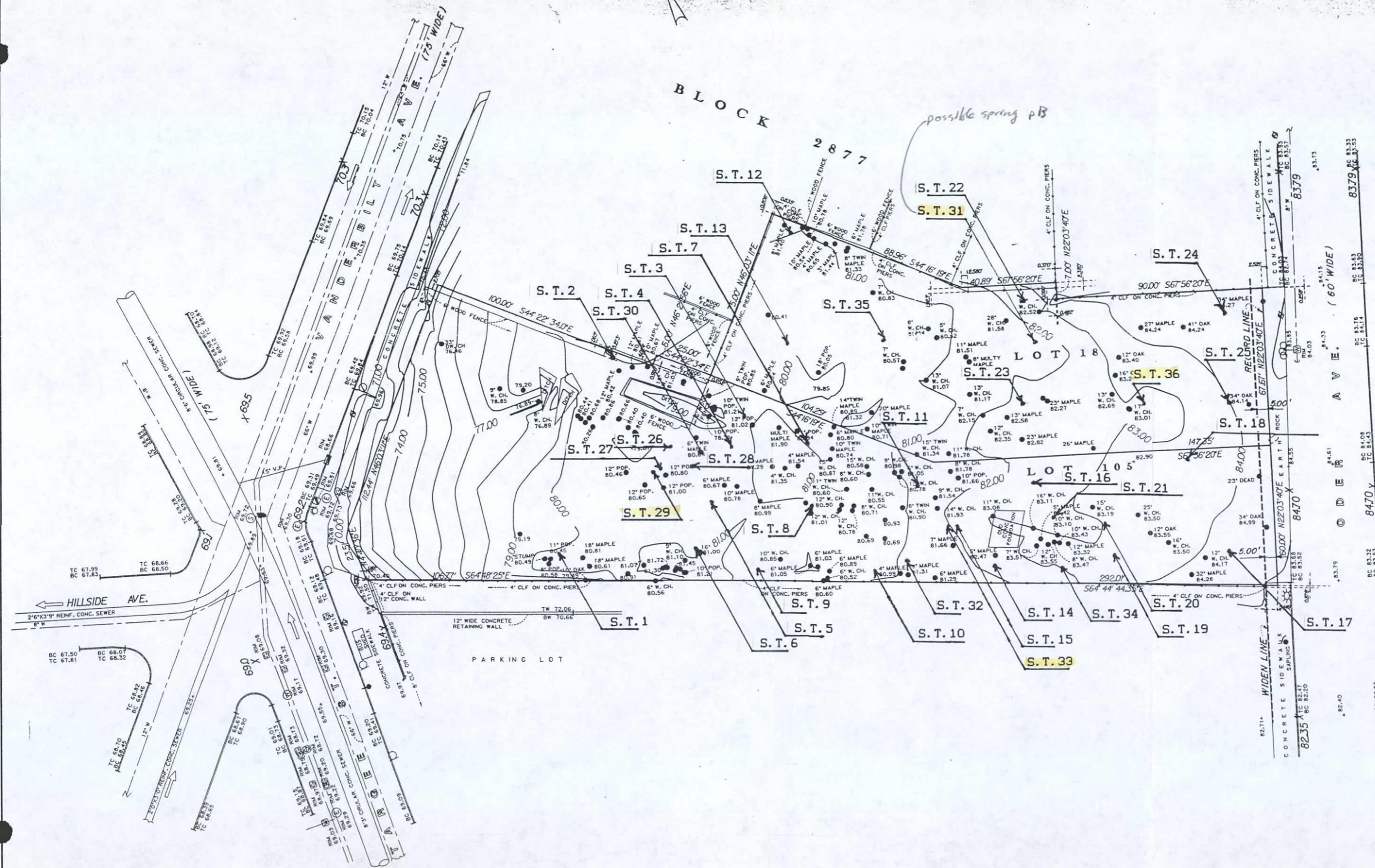
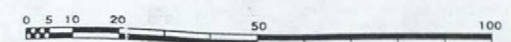
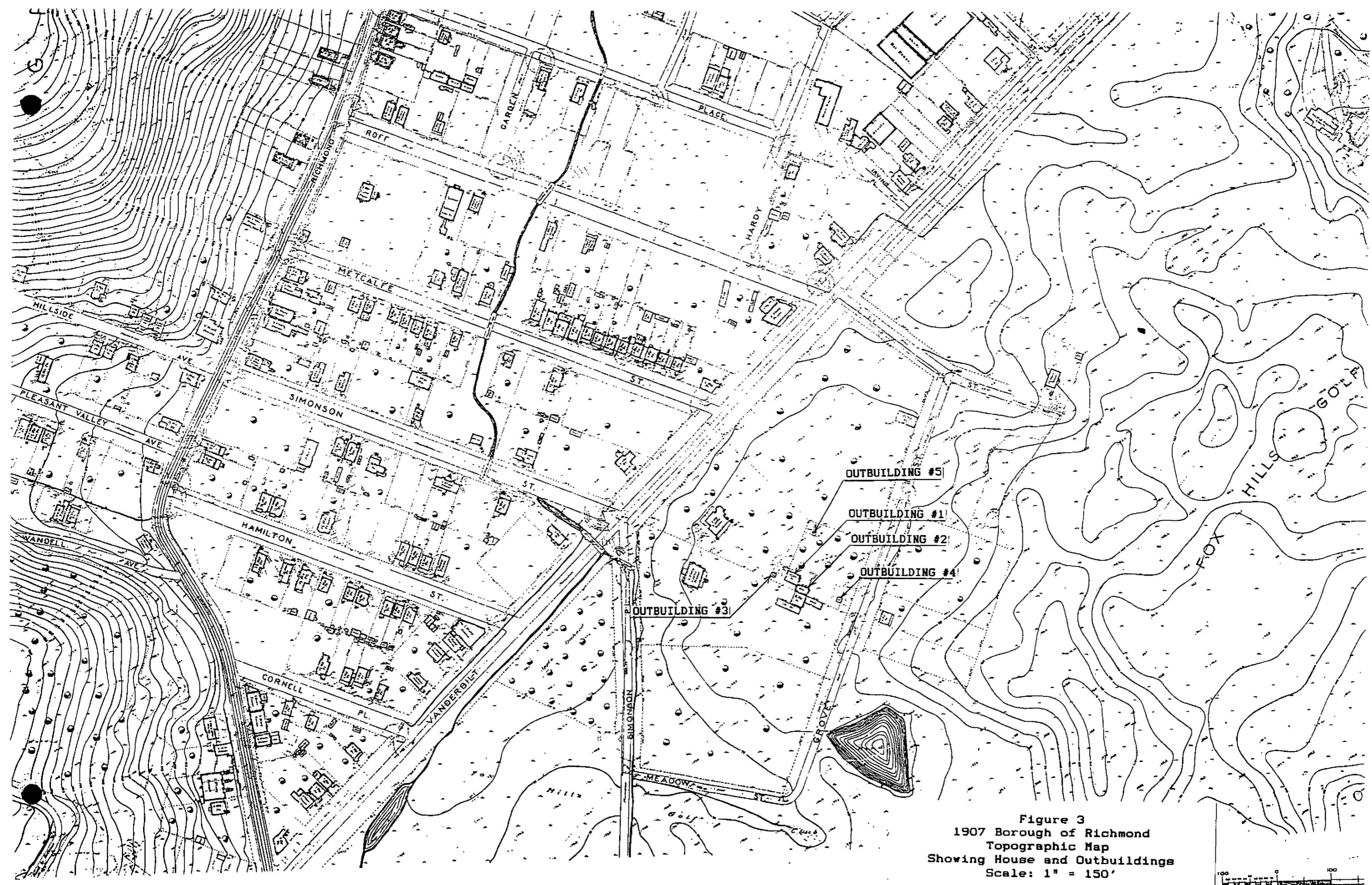
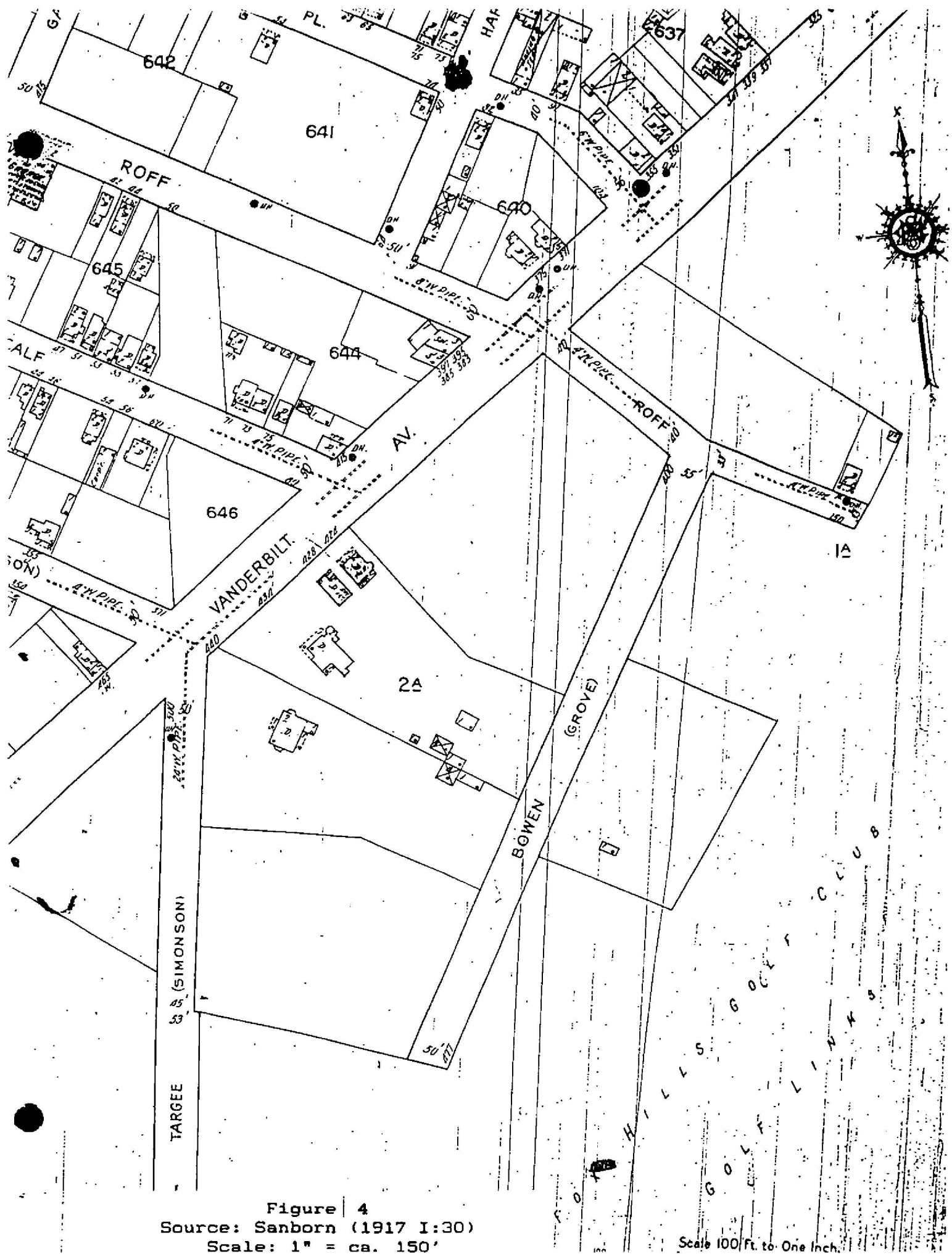
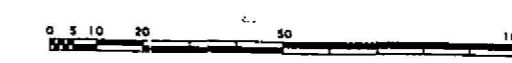
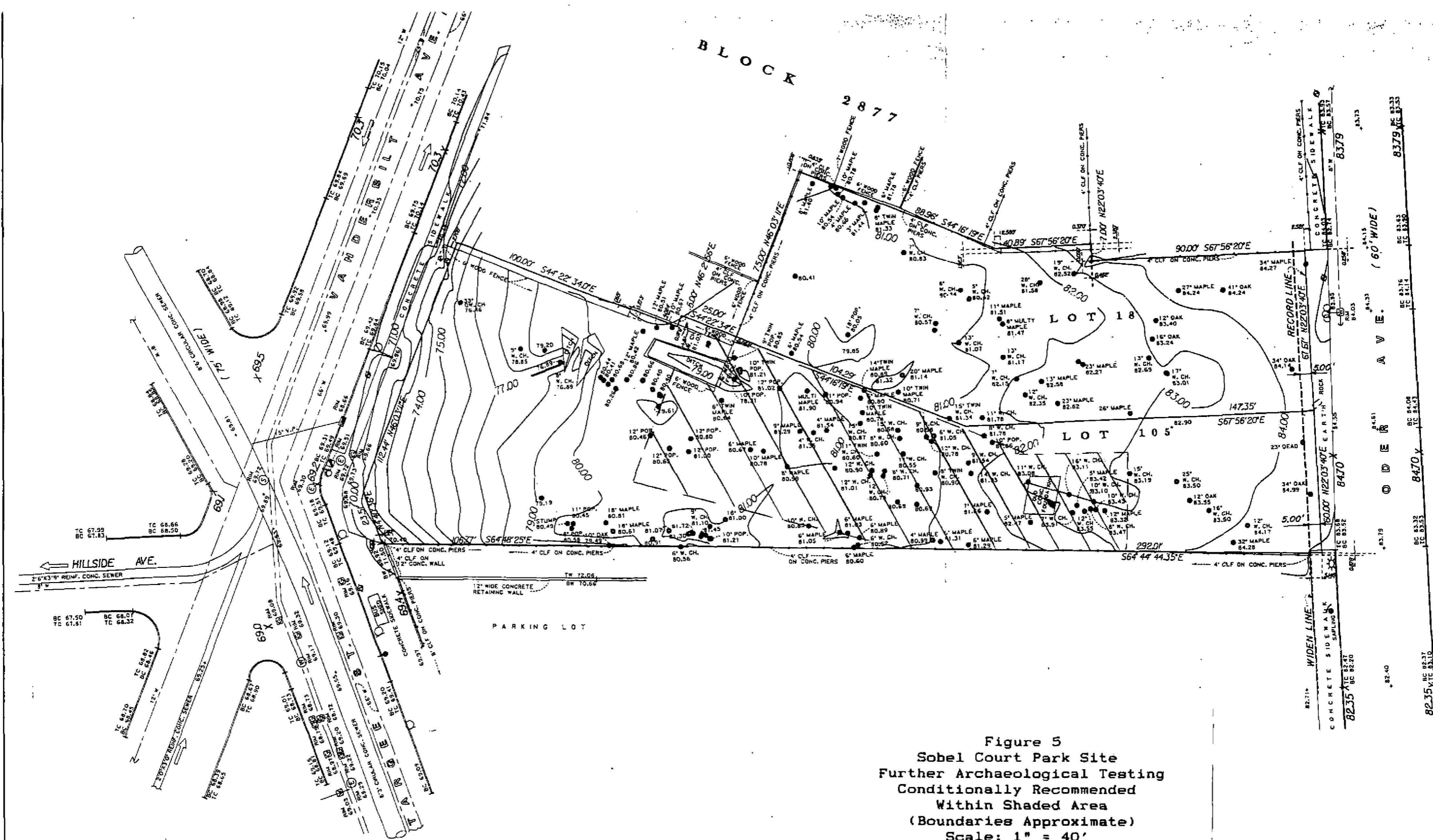


Figure 2
Location of Shovel Tests
Scale: 1" = 40'









MAP FILE * R-T-G-12250

REVISED BY D.P.R. 9/12/94
 WIDEN B RECORD LINE ON OODR.

PLATES

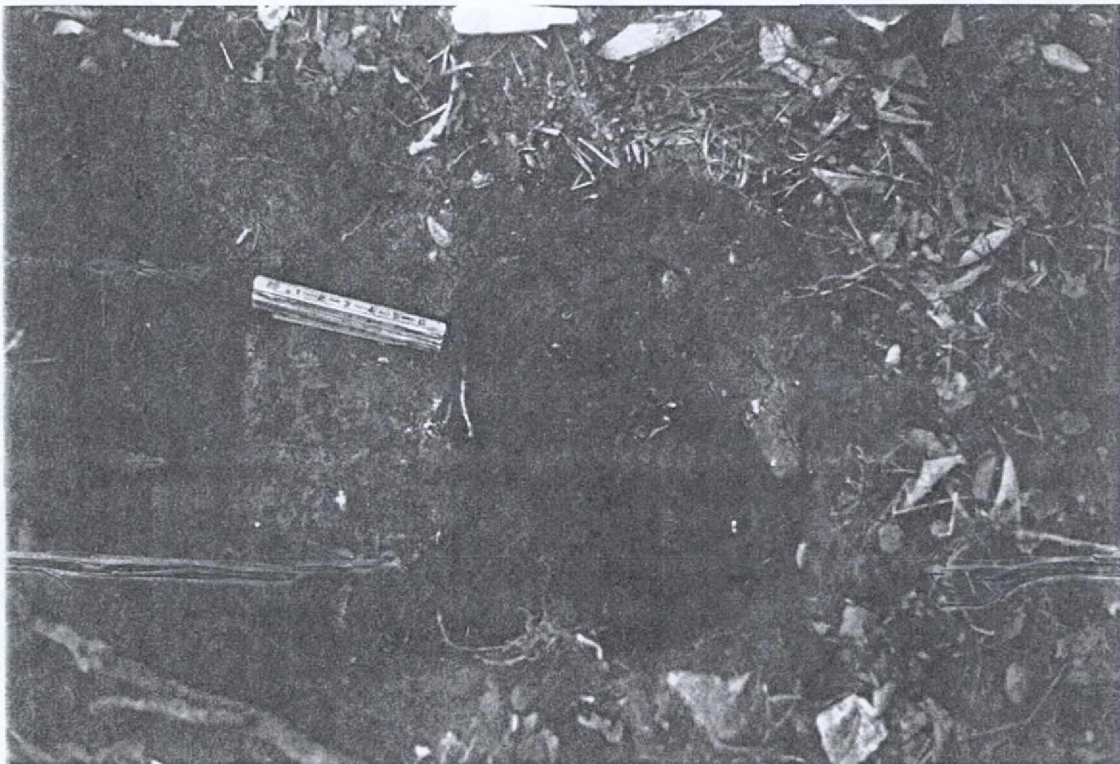


Plate 1
Shovel Test 26 and Top of Brick Wall
View West

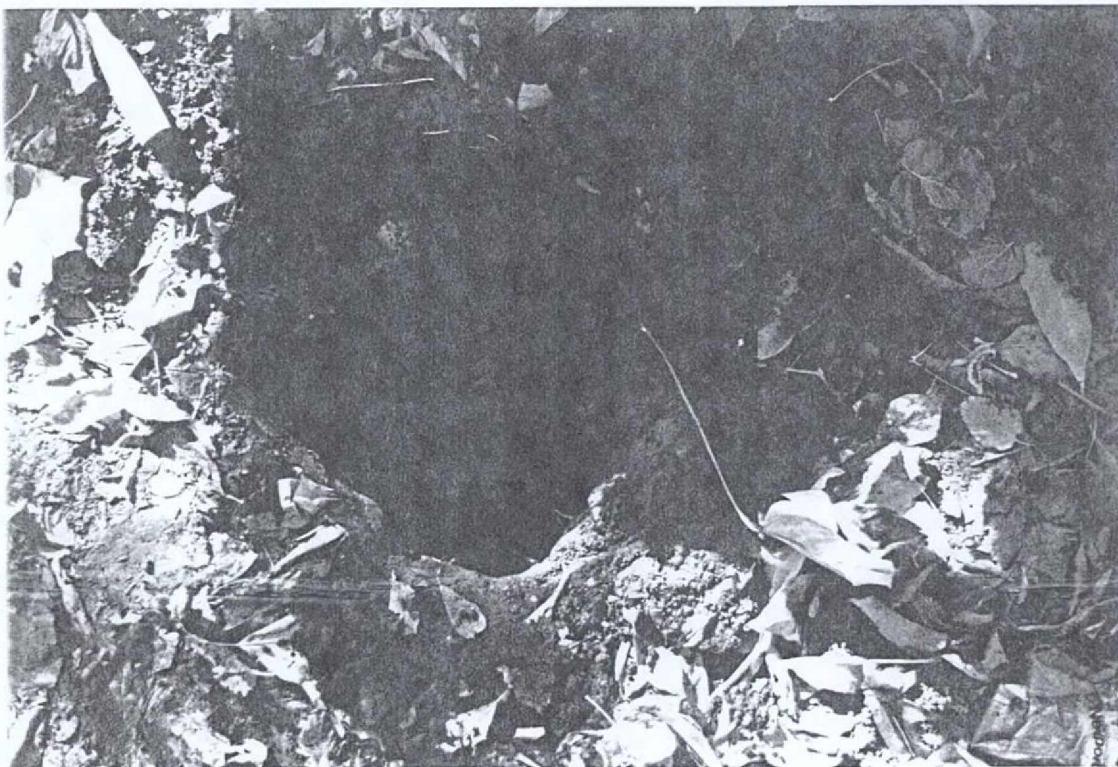


Plate 2
Shovel Test 28
Showing Brick at Base of Test
View North

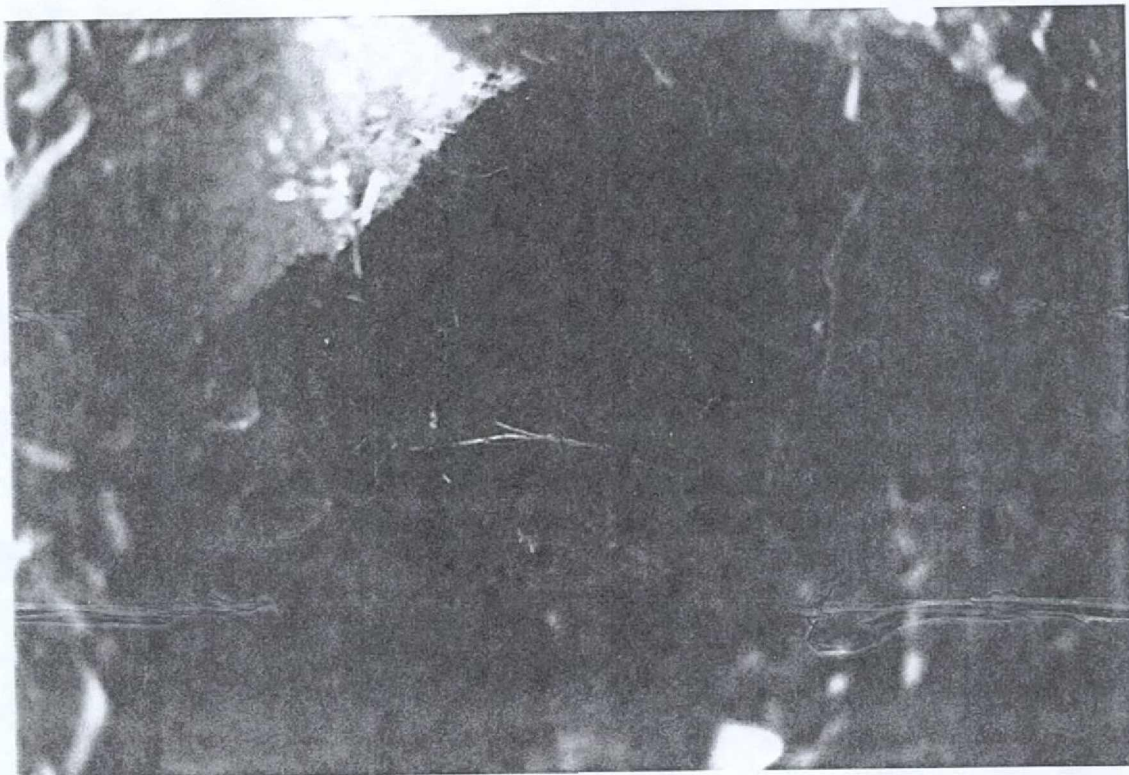


Plate 3
Shovel Test 29
Showing Cinder Deposit with Cut Slate in Wall of Test
View North

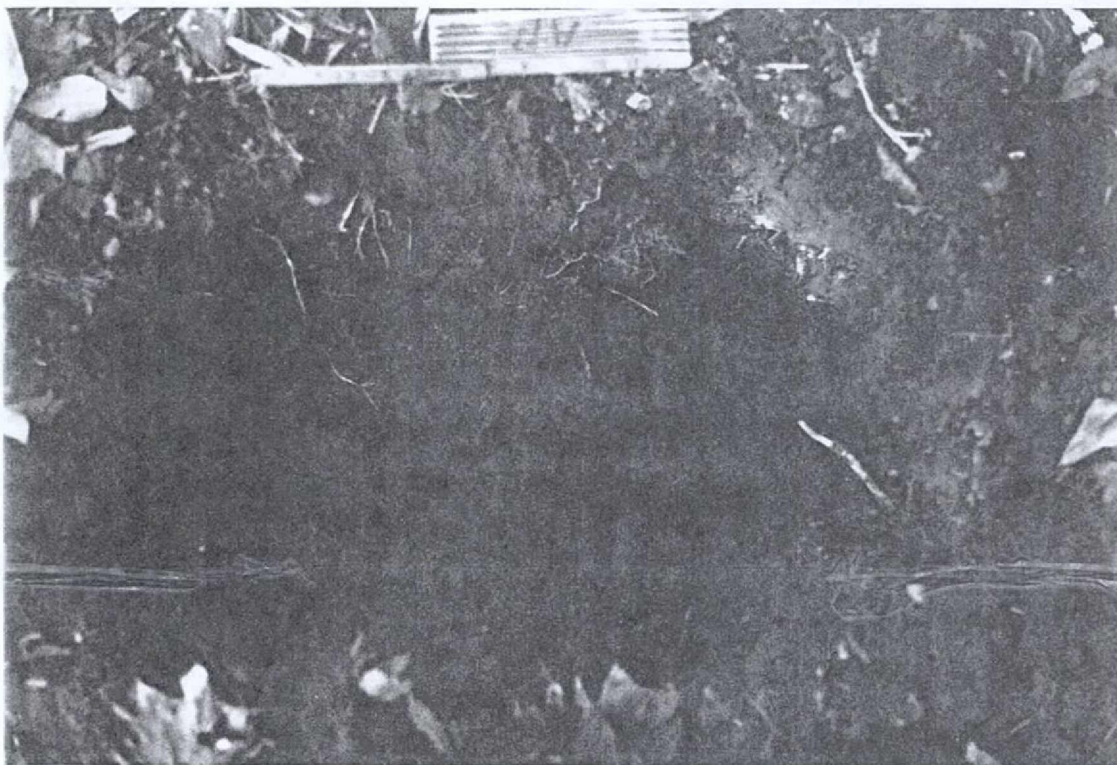


Plate 4
Shovel Test 26
Upper Portion of Stone Walls
View North

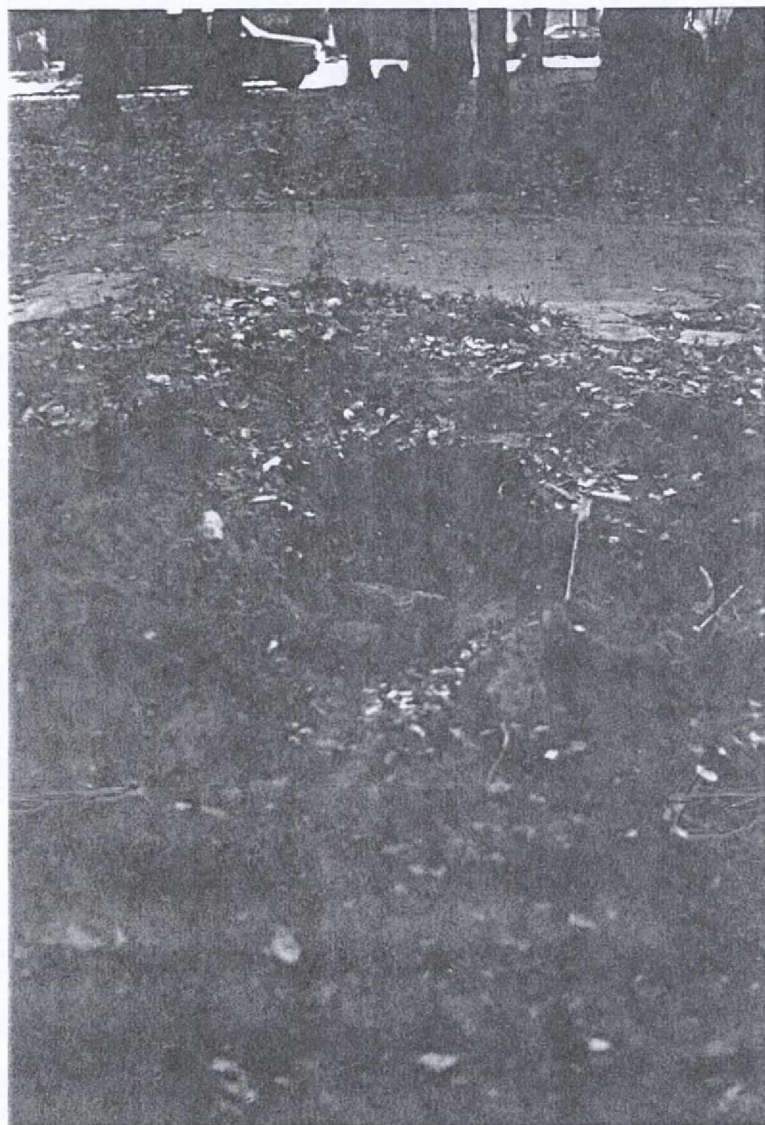


Plate 5
Stone Wall (Outbuilding #1) and Shovel Test 15
Showing Relationship to Concrete Slab
View East

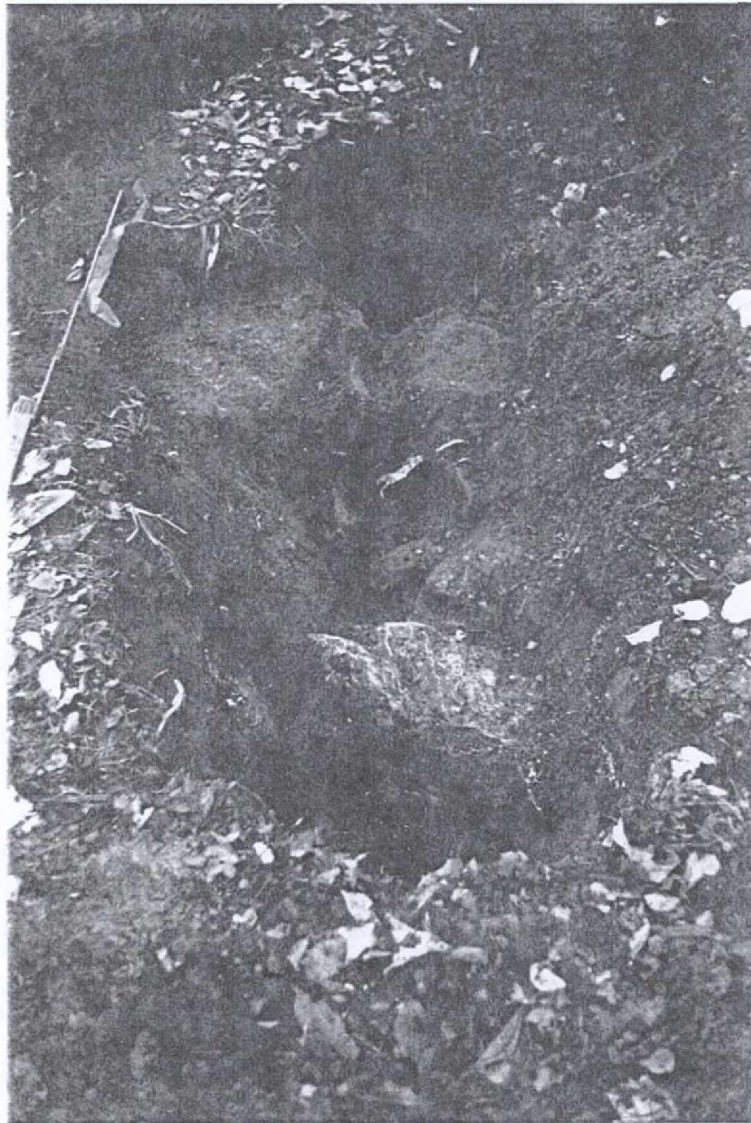


Plate 6
Stone Wall of Outbuilding #1 (Detail)
View West

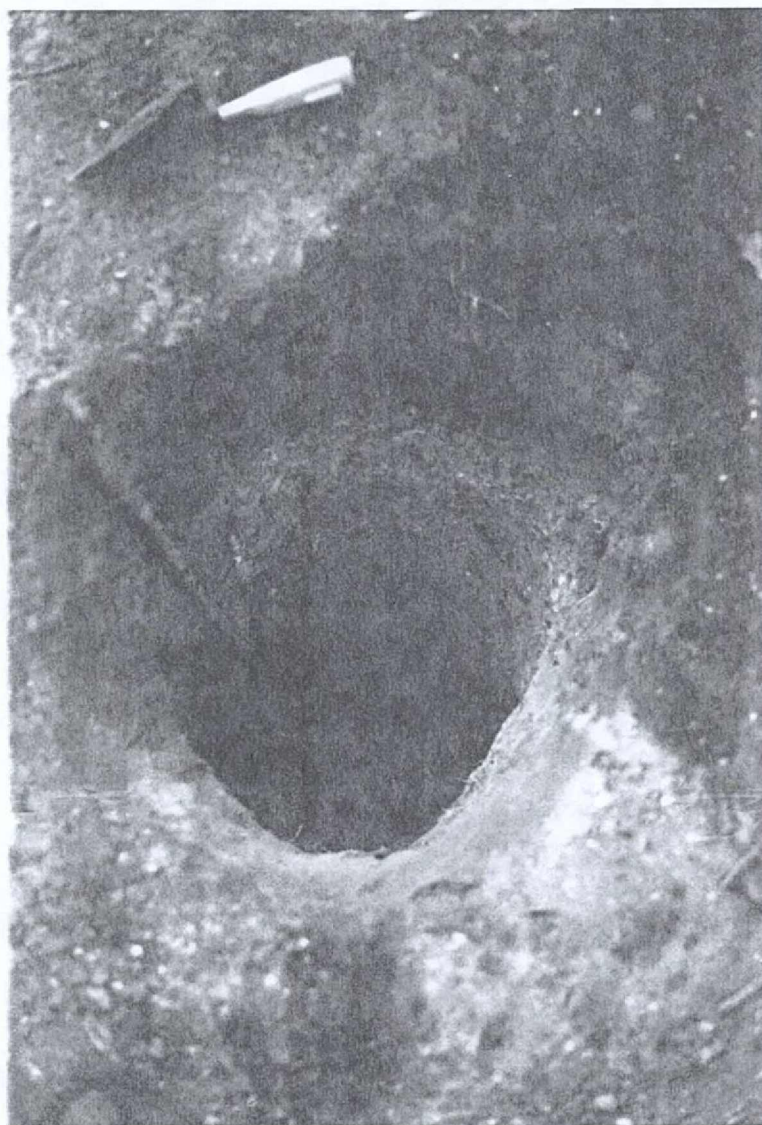


Plate 7
Shovel Test 32
Showing Upper Portion of Cinder Deposit and Overlying Fill
View Southeast

APPENDIX A
SHOVEL TEST STRATIGRAPHY AND ARTIFACT INVENTORY

SHOVEL TEST 1

Str. #	Depth (inches)	Description	Cultural Materials
1	0-2	Medium Brown Sandy Silt	None
2	2-10	Dark Reddish Brown Sandy Silt	3 pcs coal/cinder/slag (4.0 gms)
3	10-12	Light Yellow/Brown Sandy Silt	None
4	12-14	Brown Sandy Silt	None
5	14-21	Light Yellow/Brown Sandy Silt	None
6	21-26	Compact Reddish Tan Sandy Silt with Pockets of Light Tan Sandy Silt	None

SHOVEL TEST 2

Str. #	Depth (inches)	Description	Cultural Materials
1	0-2	Gray/Brown Sandy Silt and	2 pcs curved glass, 1 clear, 1 bright green
2	2-8	Mixed Brown/Orange and Gray/Brown Sandy Silt	2 pcs window glass, green tinted 1 nail, wire 1 pc fiber board (6.3 gms) 3 pcs coal (13.0 gms)
3	8-13	Very Dark Gray/Brown Very Silty Sand with Coal	1 sherd whiteware/ironstone, undecorated 1 sm pc curved glass, green tinted 2 nails, corroded, unidentified 28 pcs coal/cinder/slag (107.4 gms) (Smaller Pcs Coal Discarded in Field)
4	13-19	Mixed Yellow/Brown, Orange/Brown slightly Sandy Silt	1 sm pc curved glass, clear 28 pcs coal/cinder (34.2 gms)
5	19-27	Reddish Brown Very Sandy Silt	None

SHOVEL TEST 3

Str. #	Depth (inches)	Description	Cultural Materials
1	0-3.5	Reddish Brown Sandy Silt Mixed with Dark Brown/Black Sandy Silt	2 sherds whiteware, undecorated, (from base of plate/saucer) 5 pcs thin plastic package wrapping (2 printed) 3 pcs misc hard plastic 1 aluminum screw top bottle cap 28 pcs bottle glass, 15 clear 9 amber, 2 bright green, 2 aqua 1 pc stoneware brown salt glaze, from sewer/drain pipe 1 wire nail 1 pc misc material, possibly from cigarette filter 1 pc concrete (96.5 gms) 2 pcs mortar/cement (4.4 gms) 2 pcs unident material 2 pcs charred wood (0.3 gms) 27 pcs coal/cinder/slag (18.9 gms) (Additional Pcs. Coal/Cinder/Slag Discarded in Field)
2	3.5-11	Dark Brown/Black Sandy Silt	1 sherd whiteware/ironstone, undecorated 2 pcs styrofoam 1 pc plastic package wrapping w printed lettering 1 pc hard clear plastic 1 hard rubber "sleeve" 1 sm pc aluminum 7 pcs bottle glass, 6 clear, 1 bright green 1 pc flat glass, green tinted 2 nails, corroded, 1 cut, 1 unidentified 1 pc misc. ferrous metal, stamped (21.0 gms) 1 sm pc brick (1.9 gms) 1 pc shingle (0.3 gms) 34 pcs coal/cinder/slag (27.9 gms) (Additional Pcs. Coal/Cinder/Slag Discarded in Field)
3	11-14	Gray/Black Sandy Silt with Ash	4 sherds whiteware/ironstone, 1 with trace molded flutes 1 sherd whiteware/pearlware?, undecorated 4 sherds gray bodied stoneware, brown salt glaze, from sewer/

drain pipe
 1 pc curved glass, clear
 3 corroded nail fragments, 2 wire
 2 unidentified
 68 pcs coal/cinder/slag
 (119.5 gms)
 (Additional Pcs. Coal/Cinder/
 Slag Discarded in Field)

4	14-19	Compact Medium Brown/Tan Sandy Silt	5 sherds whiteware, 2 with molded dots below rim 1 sherd unglazed red earthenware 11 pcs coal/cinder (11.7 gms) (Additional Pcs. Coal/Cinder/ Slag Discarded in Field)
5	19-21	Yellow/Brown Sandy Silt Mottled with Reddish Brown Sandy Silt	None
6	21-23	Yellow/Brown Sandy Silt	None

SHOVEL TEST 4

Str. #	Depth (inches)	Description	Cultural Materials
1	0-11	Mixed Light/Gray, Brown, and Orange/Brown Clayey Silt with Lenses of Red/Brown Sandy Silt @10"-11"	1 pc plastic "ice cream" lid "water ice"/25c suggested retail" 1 pc clear plastic package wrapper 2 sm pcs styrofoam 6 pcs bottle glass: 3 lt green, 1 w. embossed "750", 3 clear 2 pcs window glass, green tinted 1 wire nail 2 pcs shingle (1.4 gms) 1 pc brick (55.7 gms) 6 pcs coal/cinder (20.5 gms)
2	11-16.5	Lenses of Gray Sandy Silt and Black Silty Sand with Coal (Ca. 1/2" Lens of Mortar at base of stratum on north side of test)	1 sherd gray salt glazed stoneware 3 sherds unglazed redware 10 pcs bottle glass; 1 green tinted, 6 clear, 3 amber 3 nails/fragments, 1 wire, 2 unidentified 1 pc shingle (1.5 gms) 6 pcs brick (13.0 gms) 1 sm pc unidentified material (leather?) 2 pcs hard shell clam (1.0 gms) 101 pcs coal/cinder/slag (91.1 gms) 1 pc sandstone (possibly burned and fire cracked 15.5 gms)
3	16.5-23.5	Compact Red/Brown Silty Sand	1 corroded nail fragment, unidentified type 21 pcs coal/cinder/slag (45.8 gms)
4	23.5-25	Brown/Tan Sandy Silt	None

SHOVEL TEST 5

Str. #	Depth (inches)	Description	Cultural Materials
1	0-4.5	Dark Brown Sandy Silt	4 pcs clear plastic wrap (1 has "frito-lay" logo) 6 pcs bottle glass 1 light green) 1 nail fragment, corroded 1 pc iron wire 2 pcs brick (4.1 gms) 3 pcs charred wood (0.1 gms) 5 pcs coal/cinder (4.0 gms) (Additional Pcs. Coal/Cinder/Slag Discarded in Field)
2	4.5-12	Plaster in White/Tan Silt Mixed with some Brown Sandy Silt and Rocks and Cobbles	3 pcs flat glass, clear 3 pcs bottle glass, 2 amber, 1 clear with molded stippling 7 pcs brick (30.0 gms) 1 pc mortar (4.0 gms) 4 pcs charred wood (0.4 gms) 15 pcs coal/cinder/slag (20.0 gms) (Additional Pcs. Coal/Cinder/Slag Discarded in Field)
3	12-14	Compact Dark Black/Brown Sandy Silt with Some Ash	2 sm pcs brick (0.4 gms) 1 pc wood, white painted (<0.1 gm) 6 pcs coal/cinder/slag (6.9 gms) (Additional Pcs. Coal/Cinder/Slag Discarded in Field)
4	14-24	Compact Medium Brown Sandy Silt	1 sm pc whiteware/ironstone (0.2 gms) 1 pc red earthenware, unglazed (0.4 gms) 2 pcs bottle glass, clear 2 pcs flat glass, clear 1 sm pc brick (0.2 gms) 15 pcs coal/cinder/slag (62.3 gms) (Additional Pcs. Coal/Cinder/Slag Discarded in Field)
5	24-26	Yellow/Brown Sandy Silt	None

SHOVEL TEST 6

Str. #	Depth (inches)	Description	Cultural Materials
1	0-6	Dark Brown Clayey Silt	1 plastic soda straw 8 pcs plastic package wrapping 6 pcs misc. hard plastic 1 bottle (crown) cap, trace printing on top 137 pcs bottle glass (2 aqua, 5 amber, 26 bright green, 104 clear) 1 6" wire nail/spike 1 pc corroded metal (7.6 gms) 1 pc cinder (0.2 gms)
2	6-8	Mixed Gray and Orange Silty Clay	16 pcs bottle glass; 12 clear (1 w. embossed letters "1 PT"), 1 amber, 3 bright green 1 pc plastic, clear 1 pc flat glass, green tinted 1 wood screw 1 pc corroded metal (2.4 gms) 2 sm pcs brick (0.4 gms) 7 pcs shingle (16.9 gms) 1 pc cinder (1.7 gms)
3	8-11	Dark Brown Sandy Silt with Tan/Brown Mottling	1 nail, corroded, unidentified type 1 pc plastic package wrapping, printed lettering 1 pc brick (1.0 gms) 15 pcs coal/cinder/slag (40.5 gms)
4	11-15	Gray/Brown Sandy Silt with Tan/Brown Mottling	1 sm sherd hard paste porcelain blue decorated underglaze (0.3 gms) 1 sm sherd mortar with coating or unidentified ceramic (0.1 gms) 6 sm sherds unglazed red earthenware (2.4 gms) 7 pcs bottle glass (2 clear, 1 bright green, 4 amber - 1 from neck of screw top bottle) 1 wire nail fragment 21 pcs coal/cinder/slag (42.5 gms)
5	15-20/21	Tan/Gray Silt (Large Rock or Mortar at Base of Test)	1 pc flat glass, green tinted 3 pcs coal/cinder (0.9 gms)

SHOVEL TEST 7

Str. #	Depth (inches)	Description	Cultural Materials
1	0-2	Dark Brown/Black Clayey Silt	1 sherd whiteware/ironstone, undecorated 1 pc hard rubber (possibly plastic) 2 pcs clear plastic package wrapping 18 pcs bottle glass (3 bright green, 1 amber, 14 clear (3 with molded stippling) 1 fragment from bottle (crown) cap 29 pcs flat (window) glass, green tinted 2 sm pcs shingle (0.4 gms) 1 pc mortar (13.0 gms) 1 pc bird bone (chicken/turkey leg), 3.6 gms 1 sm pc wood, trace charring (<0.1 gms) 100 pcs coal/cinder/slag (88.2 gms) (Additional Pcs. Coal/Cinder/Slag Discarded in Field)
2	2-7	Dark Brown/Black Clayey Silt Mixed with Dark Brown Sandy Silt and Lenses of Gray/Black Ashy Clayey Silt with Rocks	1 sherd whiteware/ironstone, undecorated 1 sherd unglazed redware (from flowerpot rim) 2 sherds yellow/gray/buff earthenware w. molded flutes on one side with dark brown slip in grooves 1 sherd porcelain, partially melted 1 partial bottle base (oval base) clear glass (makers mark "CWCI" on base - not listed by Toulouse 1971) 5 pcs bottle glass (1 amber, 4 clear) 8 pcs flat (window) glass, green tinted 1 pc misc corroded ferrous metal (8.1 gms) 1 lg pc brick, 531.2 gms (3 5/8" x 2 1/8") 4 brick fragments (6.7 gms) 60 pcs coal/cinder/slag (67.8 gms)

(Additional Pcs. Coal/Cinder/
Slag Discarded in Field)

3	7-13	Dark Red/Brown Sandy Silt Rocks at top of stratum	1 sherd whiteware/ironstone, undecorated (glaze eroded) 1 pc flat glass, green tinted 1 lg (cut?) nail, corroded 1 pc brick (1.0 gms) 17 pcs coal/cinder/slag (23.2 gms) (Additional Pcs. Coal/Cinder/ Slag Discarded in Field)
4	13-17	Yellow/Brown Sandy Silt Mottled with Dark Red/Brown Sandy Silt	1 sm pc brick 3 pcs coal/cinder (1.1 gms)
5	17-20	Black and Gray Silt	None
6	20-24	Yellow/Brown Sandy Silt	None

SHOVEL TEST 8

Str. #	Depth (inches)	Description	Cultural Materials
1	0-6.5	Dark Brown/Black Clayey Silt	2 pcs from plastic spoon 1 plastic bottle cap liner 1 white plastic screw top bottle cap 1 pc plastic from cigarette filter 2 pcs styrofoam 20 pcs misc. plastic 1 sherd soft paste porcelain, molded decorated exterior 3 sherds whiteware/ironstone, undecorated 1 sherd porcelain, gray/blue glaze 1 pc from screw top bottle neck, amber 1 tubular pc aluminum 4 pcs flat glass, aqua 221 pcs curved (bottle) glass, 35 pcs amber, 12 pcs light green, 69 pcs bright green, 105 clear (1 w trace decal lettering) (Additional Small Pcs. Glass Discarded in Field) 2 nails, 1 wire, 1 unidentified 1 circular pc metal wire, 1/2" diameter 2 pcs corroded metal (20.7 gms) 1 pc brick (1.4 gms) 11 pcs coal/cinder (24.5 gms) 1 pc hard shell clam (0.8 gms) 2 pcs wood (4.5 gms) 2 pcs mortar (181.1 gms)
2	6.5-11	Medium Brown Sandy Silt	6 pcs bottle glass (2 clear, 1 amber, 2 green, 2 bright green) 2 pcs flat glass, clear 20 pcs coal/cinder/slag (28.9 gms)
3	11-19	Tan/Brown Sandy Silt	1 sm pc milk glass 1 pc bottle glass, clear, from bottle/jar base, embossed "20" and stippling around edge 12 pcs coal/cinder (16.5 gms)
4	19-26	Gray/Tan Sandy Silt	None

SHOVEL TEST 9

Str. #	Depth (inches)	Description	Cultural Materials
1	0-3.5	Dark Brown/Black Clayey Silt Mottled with Red/Brown Clayey Silt and with Lenses of Ash and	1 pc clear plastic package wrapping, trace red lettering 1 pc curved glass, clear 2 pcs flat glass, clear (1 w trace coating on one side) 87 pcs Coal/Cinder/Slag (430.1 gms) (Additional Pcs. Coal/Cinder/ Slag Discarded in Field)
2	3.5-13	Slightly Compact Medium Brown Sandy Silt	1 sherd porcelain, undecorated 24 pcs coal/cinder/slag (33.7 gms) (Additional Pcs. Coal/Cinder/ Slag Discarded in Field)
3	13-15	Yellow/Brown Sandy Silt Mottled with Medium Brown Sandy Silt	None
4	15-20	Yellow/Brown Sandy Silt	None

SHOVEL TEST 10

Str. #	Depth (inches)	Description	Cultural Materials
1	0-1	Dark Brown Sandy Silt and	2 pcs clear plastic package wrapping
2	1-10	Mixed Light Brown and Brown/Orange Silty Clay	4 pcs curved (bottle) glass, 3 clear, 1 bright green 1 pc flat (window) glass, green tinted 1 pc gray bodied stoneware, light brown salt glaze, probably from sewer/drain pipe 1 pc hard shell clam (8.1 gms) 2 pcs coal (3.5 gms)
3	10-13/14	Mixed Dark Brown and Gray/Brown Silty Sand	1 pc clear plastic package with printed letters "Hanes Heavy Duty Budget Socks" 1 pc metal wire spring from furniture 1 sherd whiteware/ironstone, undecorated 1 large pc gray bodied stoneware w brown salt glaze (from sewer/ drain pipe) 10 pcs curved (bottle) glass, clear, 1 w trace embossed lettering 1 pc flat glass, clear 3 pcs fiber wall board (12.0 gms) 12 pcs coal/cinder/slag (16.8 gms)
4	13/14-16	Hard Packed Mixed Yellow/Tan and Brown Sandy Silt	1 pc curved glass, clear
5	16-18	Very Hard Packed Yellow Silt with Rust Colored Mottling	None

SHOVEL TEST 11

Str. #	Depth (inches)	Description	Cultural Materials
1	0-7	Dark Brown/Black Clayey Silt	6 pcs misc plastic 1 pc stoneware, gray body, unglazed exterior, white salt glaze interior, from base of crock 1 electronic component (capacitor) 9 pcs flat glass, 6 green tinted, 3 clear 12 pcs curved glass, 7 clear, 4 bright green, 1 amber 1 pc wall board 1 lg pc open weave fabric (31.7 gms) 6 pcs coal/cinder/slag (4.8 gms) (Additional Pcs. Coal/Cinder/ Slag Discarded in Field)
2	7-12	Yellow/Tan Clayey Silt with Dark Brown Sandy Silt	3 pcs flat (window) glass, green tinted 4 pcs coal/cinder/slag (4.5 gms)
3	12-22	Yellow/Tan Clayey Silt	None

SHOVEL TEST 12

Str. #	Depth (inches)	Description	Cultural Materials
1	0-4	Dark Black/Brown Clayey Silt Mixed with Red/Brown Clayey Silt	2 pcs plastic (1 from package wrapping) 1 pc curved glass, clear 3 pcs flat glass, clear 6 pcs coal/cinder/slag (2.3 gms) 1 pc mortar (1.2 gm) 1 pc wood (0.2 gms) (Additional Pcs. Coal/Cinder/Slag Discarded in Field)
2	4-16	Dark Brown Clayey Silt	1 pc plastic 1 pc tin foil 5 pcs bottle glass (3 clear; 2 amber, 1 w trace embossed eagle) 5 pcs flat glass, green tinted 1 pc fiber wall board (4.6 gms) 1 pc brown glazed stoneware, from sewer/drain pipe 1 nail fragment, corroded 1 pc mortar, with plaster coating (0.8 gms) 1 pc mammal bone (0.9 gms) 7 pcs shingle (3.7 gms) 15 pcs coal/cinder/slag (32.5 gms) (Additional Pcs. Coal/Cinder/Slag Discarded in Field)
3	16-21	Mixed Yellow/Tan and Gray/White Clayey ilt Mottled with Dark Brown Clayey Silt	1 pc curved glass, clear 1 pc brick (.7 gms) 2 pcs shingle (1.0 gms) 5 pcs coal/cinder (2.4 gms)
4	21-25	Mixed Yellow/Brown and Gray/White Clayey Silt	None

SHOVEL TEST 13

Str. #	Depth (inches)	Description	Cultural Materials
1	0-3.5	Mixed Brown and Dark Brown Sandy Silt	1 pc clear plastic wrap 1 pc black rubber, possibly from balloon 1 sherd whiteware/ironstone, undecorated 1 pc clear hard plastic 1 pc bottle glass, purple tinted, fragment from neck/rim of large medicine/type bottle, mold seam around base of lip 3 pcs curved (bottle) glass; 2 clear, 1 bright green 1 nail fragment, corroded 8 pcs coal/cinder/slag (14.3 gms)
2	3.5-10	Dark Brown Sandy Silt	1 sherd soft paste porcelain underglaze blue/green transfer printed floral design 1 sherd red earthenware, unglazed 1 pc curved glass, clear 1 pc flat (window) glass, clear 1 nail, corroded, unidentified type 22 pcs coal/cinder/slag (15.1 gms)
3	10-15	Light Brown Clayey Silt	1 sherd whiteware/pearlware? 1 pc curved (bottle) glass, purple tinted 12 pcs coal/cinder/slag (11.9 gms)
4	15-27	Mixed Orange/Brown, Gray and Black Silty Clay	None

SHOVEL TEST 14

Str. #	Depth (inches)	Description	Cultural Materials
1	0-7	Mixed Dark Brown, Gray/ Brown, Gray/Tan, Red/ Brown, and Black/Brown Silt, Sandy Silt & Clayey Silt	<p>1 sherd porcelain ("industrial" type), possibly from rim of fixture or insulator</p> <p>1 sherd whiteware/ironstone, undecorated</p> <p>1 lg pc amber bottle glass, from base of large bottle</p> <p>26 pcs curved glass, 2 dark green 7 light green, 3 bright green, 14 clear (1 w embossed lettering (s)"quibb")</p> <p>6 pcs flat glass, green tinted</p> <p>2 nails corroded, unidentified type</p> <p>3 pcs charcoal/charred wood (<0.3 gms)</p> <p>1 sm pc oyster shell (0.5 gms)</p> <p>1 sm pc thin non-ferrous metal (0.3 gms)</p> <p>1 lg pc brick (3 1/2" x 2 1/8" - 1486.3 gms)</p> <p>23 pcs coal/cinder/slag (35.9 gms) (Additional Pcs. Coal/Cinder/ Slag Discarded in Field)</p>
2	7-14	Mixed Red/Brown, Medium/ Dark Brown, & Tan/Brown Clayey Silt with Rocks	<p>3 pcs curved glass, 1 clear, 1 royal blue, 1 aqua</p> <p>1 corroded nail, unidentified</p> <p>17 pcs coal/cinder/slag (35.3 gms) (Additional Pcs. Coal/Cinder/ Slag Discarded in Field)</p>
3a	14-16	Dark Gray/Brown Sandy Silt (South 1/2 of Test)	3 pcs curved glass; 1 dark green 1 amber, 1 clear
	16-19	Red/Brown Clayey Silt (South 1/2 of Test)	13 pcs coal/cinder/slag (5.5 gms) (Additional Pcs. Coal/Cinder/ Slag Discarded in Field)
	19-20	Dark Gray/Black/Brown Sandy Silt (South 1/2 of Test	
3b	14-19	Dark Gray/Black/Brown Sandy Silt (North 1/2 of Unit	
4	19-24	Light Yellow/Tan Clayey Silt	None

SHOVEL TEST 15 AND EXTENSION

Str. #	Depth (inches)	Description	Cultural Materials
1	0-2/3	Dark Brown Sandy Silt Mixed with Orange Sandy Clayey Silt	8 pcs misc plastic 1 sherd whiteware/ironstone, undecorated pcs curved glass; 5 aqua, 7 bright green, 1 amber, 11 clear 13 pcs flat glass, green tinted 1 pc concrete (discarded in field 1 lg ferrous metal staple 1 pc mortar (20.5 gms) 2 pcs coal/cinder/slag (0.6 gms)
2	2/3-8/9.5	Orange Sandy Clayey Silt with some Gray Mottling	1 pc curved glass, light green 3 pcs flat glass, green tinted 1 sm pc cinder (<0.1 gm)
3	8/9.5- 10.5/15	Gray/Brown Sandy Silt Mixed with Orange Clayey Silt with Cinder/Ash and Rocks	1 pc curved glass, clear 24 pcs coal/cinder/slag (101.7 gms) (Additional Pcs. Coal/Cinder/ Slag Discarded in Field)
3ext	9-12	Gray/Brown Sandy Silt Mixed with Orange Clayey Silt with Cinder/Ash and Rocks	2 pcs flat glass, clear 25 pcs coal/cinder/slag (55.8 gms) (Additional Pcs. Coal/Cinder/ Slag Discarded in Field)
4a/ext	12-13.5	Brown/Yellow Sandy Silt Silt	12 pcs coal/cinder/slag (8.6 gms)
		and	
4b/ext	13.5-19	Tan/Brown Clayey Silt	
5ext	19-26	Yellow Tan Clayey Silt with some Rust Mottling (some roots)	1 pc flat glass, green tinted 5 sm pcs cinder (0.4 gms)

Surface Finds West of Shovel Test 15

1 Shoulder and neck portion of aqua glass medicine type bottle, mold seam ends 1 5/8" below rim, lip separately applied, rim outer diameter 1"; inner diameter 1/2". Swirling lines on neck possibly from use of lipping tool. Double ring type neck finish

1 bottle base, aqua, portion of rectangular base of medicine type bottle, width 1 1/4", pontil mark on base

SHOVEL TEST 16

Str. #	Depth (inches)	Description	Cultural Materials
1	0-4	Compact Dark Brown/Black Sandy Silt and	16 pcs misc plastic 3 sherds whiteware/ironstone, undecorated
2	4-5	Black Sandy Silt	1 sherd unglazed red earthenware 46 pcs curved glass; 4 amber, 3 aqua, 4 light green, 9 bright green, 25 clear (1 w trace decal lettering), 1 dark green (patinated), 1 royal blue 1 pc wood w white paint 2 pcs shingle (2.3 gms) 1 wire nail 1 pc carbon rod 5/16" diameter (3.1 gms) 1 pc wool thread 1 pc concrete (150.1 gms) 24 pcs coal/cinder/slag (52.6 gms) (Additional Pcs. Coal/Cinder/Slag Discarded in Field)
3	5-6	Dark Brown Sandy Silt with Pebbles and Rocks	5 pcs curved glass, 3 clear, 2 bright green 1 pc flat glass, clear 1 sm pc thin plastic from package wrapping 1 pc misc plastic 1 circular pc ferrous 1/8" metal "wire" (8.6 gms) 2 pcs "macadam" pavement (193.8 gms) 1 pc mortar (68.1 gms) 8 pcs coal/cinder/slag (25.5 gms) (Additional Pcs. Coal/Cinder/Slag Discarded in Field)
4	6-7	Red/Brown Clayey Silt Mottled with Dark Brown Sandy Silt	1 sm pc clear thin plastic 1 pc coarse red earthenware, unglazed, sm pc from ceramic tile or other building material (1.1 gms) 28 pcs curved glass; 17 clear, 3 amber, 8 bright green 11 pcs coal/cinder/slag (14.0 gms) (Additional Pcs. Coal/Cinder/Slag Discarded in Field)

5	7-10	Light Yellow/Tan Clayey Sandy Silt	4 pcs coal/cinder/slag (5.3 gms) (Additional Pcs. Coal/Cinder/ Slag Discarded in Field)
6	10-13	Brown Sandy Silt with Rocks and Large Pebbles	2 pcs misc plastic 3 pcs curved glass, 1 green tinted, 1 amber, 1 clear 1 pc curved glass, aqua, melted 1 sherd red earthenware, unglazed 12 pcs coal/cinder/slag (32.5 gms) (Additional Pcs. Coal/Cinder/ Slag Discarded in Field)
7	13-15	Gray/Tan Silt mottled with Gray/Brown Silt	1 pc curved glass, green tinted 4 pcs coal/cinder/slag (2.2 gms) (Additional Pcs. Coal/Cinder/ Slag Discarded in Field)
8	15-20	Gray/Tan Silt	None

SHOVEL TEST 17

Str. #	Depth (inches)	Description	Cultural Materials
1	0-2	Dark Brown/Black Sandy Silt	2 metal bottle (crown) caps (1 from "Beck's" beer) 1 pc clear plastic wrapping 1 pc flat glass, clear 1 sherd buff/gray stoneware, brown salt glaze, from sewer/drain pipe 3 pcs coal/cinder/slag (5.5 gms) (Additional Pcs. Coal/Cinder/Slag Discarded in Field)
2	2-5.5	Red/Brown Clayey Silt with Dark Brown Sandy Silt Mottling and Lenses of Yellow/Tan Sandy Silt with Pebbles	2 pcs thin blue plastic 1 pc thin plastic package wrapping with printing 1 pc misc plastic 8 pcs bottle glass; 2 amber, 6 clear (1 from neck screw top bottle) 17 pcs coal/cinder/slag (Additional Pcs. Coal/Cinder/Slag Discarded in Field)
3	5.5-9	Dark Gray/Brown Sandy Silt with Lenses of Red/Brown Clayey Silt and Ash/Coal/Slag	1 pc thin blue plastic 1 sherd stoneware (underfired), 1 side unglazed, 1 side brown slip 3 pcs clear glass, mend to form neck of screw top bottle, mold seam to rim 9 pcs curved glass, 8 clear, 1 green tinted 1 corroded nail, probably wire 50 pcs coal/cinder/slag (36.8 gms) (Additional Pcs. Coal/Cinder/Slag Discarded in Field)
4	9-13	Light Gray/Tan Silt with Dark Gray/Brown Sandy Silt Mottling	1 pc curved glass, clear 23 pcs coal/cinder/slag (6.0 gms) (Additional Pcs. Coal/Cinder/Slag Discarded in Field)
5	13-23	Light Gray/Tan Silt	None

SHOVEL TEST 18

Str. #	Depth (inches)	Description	Cultural Materials
1	0-2	Dark Brown/Black Silty Sand	2 bottle (crown) caps, 1 "Beck's" beer 1 plastic screw-type bottle cap 2 pcs styrofoam 3 pcs aluminum foil 2 pcs misc. plastic 62 pcs curved glass, 12 light green, 12 bright green, 8 amber, 30 clear 3 pcs flat glass (green tinted) 2 pcs shingle (1.5 gms) 1 aluminum can base 29 pcs coal/cinder/slag (89.9 gms) (Additional Pcs. Coal/Cinder/Slag Discarded in Field)
2	2-5	Very Hard Packed Coal/Cinder/Slag Mixed with Dark Brown Sandy Silt	9 pcs curved glass, 1 dark green, 1 light green, 1 bright green, 6 clear 3 pcs flat glass, 1 green tinted, 2 clear 1 pc aluminum foil 1 sherd unglazed red earthenware 16 pcs coal/cinder/slag (129.0 gms) (Most Pcs. Coal/Cinder/Slag Discarded in Field)
3	5-9	Compact Brown Sandy Silt Mottled with Orange/Tan Sandy Silt	1 pc curved glass, clear 31 pcs coal/cinder/slag (59.4 gms) (Small Pcs. Coal/Cinder/Slag Discarded in Field)
4	9-15	Compact Orange/Tan Sandy Silt	None

SHOVEL TEST 19

Str. #	Depth (inches)	Description	Cultural Materials
1	0-5	Dark Brown/Black Clayey Silt	7 pcs misc. plastic 1 pc styrofoam
2	5-8	and Dark Brown/Black Clayey Silt Mixed with Red/Brown Clayey Silt	11 pcs curved glass; 3 amber, 1 green, 7 clear 1 pc porcelain 1 sherd whiteware, blue transfer printed decoration 1 sherd whiteware/ironstone, undecorated 2 pcs mortar (1.9 gms) 2 pcs misc corroded metal (1.0 gm) 11 pcs coal/cinder/slag (26.1 gms) (Additional Pcs. Coal/Cinder/Slag Discarded in Field)
3	8-12	Black/Brown Clayey Silt with Coal and Ash	1 pc thin plastic package wrapper w. printing ("Twin Ring Ding") 2 pc misc plastic 1 scrubbing brush with plastic handle and bristles 1 pc porcelain floor tile with attached mortar (4.3 gms) 13 pcs curved glass, 1 dark green, 5 amber, 3 light green, 4 clear 1 pc flat glass, green tinted 2 pcs shingle (0.7 gms) 4 pcs brick (86.5 gms) 1 pc mortar (0.2 gms) 1 pc charcoal (<0.1 gms) 14 pcs coal/cinder/slag (14.5 gms) (Additional Pcs. Coal/Cinder/Slag Discarded in Field)
4	12-14	Medium Gray/Brown Sandy Silt	2 pcs clear thin plastic from package wrapping 1 pc misc plastic 4 pcs curved glass; 1 amber, 3 clear 1 pc thin ferrous metal, twisted (8.2 gms) 32 pcs coal/cinder/slag (89.9 gms) (Additional Pcs. Coal/Cinder/Slag Discarded in Field)
5	14-16	Light Yellow/Tan Sandy Silt Mottled with Medium Brown Sandy Silt	1 sherd ironstone, undecorated 1 pc curved glass, clear 1 pc flat glass, green tinted 17 pcs coal/cinder/slag (16.0 gms)

(Additional Pcs. Coal/Cinder/
Slag Discarded in Field)

6	16-21	Light Yellow/Tan Sandy Silt	None
---	-------	--------------------------------	------

SHOVEL TEST 20

Str. #	Depth (inches)	Description	Cultural Materials
1	0-1/3	Dark Black/Brown Silty Sand	1 1945 penny 4 pcs misc plastic 23 pcs curved glass; 2 amber, 2 bright green, 1 light green, 2 aqua, 16 clear 6 pcs brick (30.2 gms) 1 brick, manufacturers brand in sunken panel "S&F Co" (8" x 3 3/16" x 2 2/16" - 1796.5 gms) 30 pcs coal/cinder/slag (30.0 gms) (Additional Pcs. Coal/Cinder/Slag Discarded in Field)
2	1/3-9	Mixed Orange/Tan, Tan/Brown, and Red/Brown Silty Sand	1 sherd porcelain, undecorated 17 pcs coal/cinder/slag (40.8 gms)
3	9-14	Tan/Brown Sandy Silt with some Yellow/Tan Mottling	None
4	14-19	Yellow Tan Slightly Sandy Silt	1 pc coal (1.1 gms)
5	19-21.5	Tan/Yellow Slightly Sandy Silt	

SHOVEL TEST 21

Str. #	Depth (inches)	Description	Cultural Materials
1	0-6	Dark Brown/Black Clayey Silt with Gravel	6 pcs misc plastic 2 sherds whiteware (undecorated) 1 sherd whiteware, trace green glaze 1 sherd unglazed red earthenware 69 pcs curved glass, 1 dark green 4 aqua, 13 bright green, 2 yellow tinted, 7 amber, 42 clear 3 nails, 1 wire, 2 unidentified 1 pc clam shell (1.1 gms) 1 pc leather (0.7 gms) 27 pcs coal/cinder/slag (23.4 gms) (Additional Pcs. Coal/Cinder/ Slag Discarded in Field)
2	6-11	Dark Brown Clayey Silt Mixed with Red/Brown and Yellow/Tan Sandy Clayey Silt	2 pcs curved glass, 1 aqua, 1 clear 3 pcs coal/cinder (1.1 gms)
3	11-19	Yellow/Tan Clayey Silt Mixed with Gray/Brown Clayey Silt	4 pcs coal/cinder (3.5 gms)
4	19-22	Dark Gray/Brown Sandy Silt	1 pc curved glass, clear (0.2 gms) 2 pcs coal (0.5 gms)
5	22-24	Yellow/Tan Clayey Silt Mottled with Dark Gray/ Brown Sandy Silt	1 sm pc coal (0.1 gm) 1 sm pc charcoal (< 0.1 gm)
6	24-28	Yellow/Tan Clayey Silt	None

SHOVEL TEST 22

Str. #	Depth (inches)	Description	Cultural Materials
1	0-7	Tan/Brown Sandy Silt Mixed with Red/Brown and Yellow/Brown Sandy Silt	1 sherd whiteware/ironstone, undecorated 1 portion of bottle or table glass base, clear glass 3 pcs bottle glass; 2 clear, 1 bright green 1 pc flat glass, green tinted 1 pc mammal bone, calcined (0.9 gms) 22 pcs coal/cinder/slag (38.0 gms)
2	7-11	Red/Brown Sandy Silt Mixed Brown Sandy Silt and Yellow/Tan Sandy Clayey Silt	8 pcs coal/cinder/slag (16.6 gms) 1 "lozenge" shaped red glass? bead 9/16"x7/16"x3/16 - longitudinal hole for suspension (1.7 gms)
3	11-20	Brown Sandy Clayey Silt	5 sherds yellow earthenware (possibly underfired stoneware), clear salt? glaze, with blue and white annular decoration exterior 3 sherds unglazed red earthenware 4 pcs curved glass, clear 1 pc flat glass, clear 2 pcs oyster shell (3.2 gms) 1 pc hard shell clam (0.4 gms) 72 pcs coal/cinder/slag (414.6 gms) (Additional Small Pcs. Coal/ Cinder/Slag Discarded in Field)
4	20-21.5	Tan/Light Gray Sandy Silt	None
5	21.5-25.5	Light Gray Sandy Silt with some small Rocks - Pocket of Gray Yellow Silt at Top of Stratum	None

SHOVEL TEST 23

Str. #	Depth (inches)	Description	Cultural Materials
1	0-2	Dark Brown/Black Sandy Silt	1 lg pc plastic wrapping 2 pcs thin clear plastic 1 pc plastic (possibly from plastic "table cover") 1 pc styrofoam 1 sherd unglazed red earthenware 31 pcs curved glass; 2 amber, 5 bright green, 5 light green, 19 clear 2 corroded nail fragments, 1 cut, 1 unidentified 7 pcs flat glass, green tinted 2 pcs fiber wall board (15.5 gms) 6 pcs shingle (3.7 gms) 8 pcs mortar/plaster (59.7 gms) 40 pcs coal/cinder/slag (52.4 gms) (Additional Pcs. Coal/Cinder/Slag Discarded in Field)
2	2-4	Dark Brown Clayey Silt with Orange/Brown Clayey Silt Lenses	1 plastic ring (possibly part of bottle/jar seal) 2 pcs misc hard plastic 1 sherd buff/red earthenware green and white swirled glaze 1 sherd unglazed red earthenware 36 pcs curved glass; 3 amber, 4 light green, 1 olive green, 6 bright green (inc. neck from screw top bottle), 22 clear 14 pcs flat glass; 6 clear, 8 green tinted 2 pcs flat (plate) glass, clear 2 wire nails 1 lg pc stoneware, brown salt glaze, from sewer/drain pipe 1 carbon rod (3/16" diameter - 0.4 gms) 2 pcs fiber wall board 14.5 gms) 8 pcs shingle (6.8 gms) 6 pcs mortar (224.0 gms) 1 pc asphalt pavement (127.7 gms) 1 pc wood (0.3 gms) 1 sm pc brick (1.9 gms) 20 pcs coal/cinder/slag (89.2 gms) (Additional Pcs. Coal/Cinder/Slag Discarded in Field)

3	4-7	Orange/Brown Sandy Silt	1 pc hard rubber, black 5 pcs curved glass; 4 clear, 1 aqua 1 pc flat glass, green tinted 1 pc mortar (1.3 gms) 16 pcs coal/cinder/slag (10.6 gms) (Additional Pcs. Coal/Cinder/Slag Discarded in Field)
4	7-10	Yellow/Brown Clayey Silt Mottled with Gray/Brown Sandy Silt	1 pc plastic soda straw 3 pcs curved glass, clear (1 w trace decal lettering 4 pcs coal/cinder/slag (13.8 gms) (Additional Pcs. Coal/Cinder/Slag Discarded in Field)
5	10-12	Yellow/Brown Clayey Silt	None

SHOVEL TEST 24

Str. #	Depth (inches)	Description	Cultural Materials
1	0-3.5	Mixed Black/Brown, Yellow and Red Sandy Silt	1 pc printed plastic from package wrapping 1 sherd whiteware/ironstone fractured during excavation, green line painted underglaze below rim 4 pcs curved glass, clear 2 pcs glass mirror 2 pcs charcoal (<0.1 gm) 2 sm pcs cinder (<0.1 gms)
2	3.5-18.5	Brown/Red Sandy Silt with Orange/Brown Clayey Silt Lenses (Most Cultural Materials from upper part of Stratum)	1 sherd whiteware, undecorated (fractured during excavation) 1 pc glass mirror 2 pcs coal/cinder (3.0 gms)
3	18.5-21.5	Brown Sandy Silt	1 sm sherd slipware? (buff body clear glaze) 5 sm pcs coal/cinder (0.8 gms)
4	21.5-24	Yellow/Gray Slightly Sandy Silt	A few pcs cinder (discarded in field)
5	24-27	Tan/Yellow Silt	None

SHOVEL TEST 25

Str. #	Depth (inches)	Description	Cultural Materials
1	0-2	Dark Brown/Black Sandy Silt	4 pcs misc plastic 2 pcs aluminum foil 10 pcs curved glass; 1 aqua, 3 light green, 1 bright green, 5 clear 5 pcs flat glass, clear 1 pc shingle (0.8 gms) 1 pc concrete (396.8 gms) 5 pcs coal/cinder/slag (3.2 gms) (Additional Pcs. Coal/Cinder/Slag Discarded in Field)
2	2-5	Dark Brown Sandy Silt	8 pcs thin clear plastic package wrappers 6 pcs hard plastic 1 pc styrofoam 5 pcs aluminum foil 1 pc hard rubber 1 sherd soft paste porcelain, clear glaze interior, brown glaze exterior 91 pcs curved glass, 9 amber, 1 aqua, 12 light green, 34 pcs bright green, 35 pcs clear 14 pcs flat glass, clear 2 pcs shingle (0.5 gms) 1 sm pc plaster board? (0.2 gms) 23 pcs coal/cinder/slag (11.0 gms) (Additional Pcs. Coal/Cinder/Slag Discarded in Field)
3	5-7	Yellow/Tan Clayey Sandy Silt Mottled with Dark Brown Sandy Silt and	1 pc thin flexible plastic (cream colored) 4 pcs curved glass, 1 light green 1 bright green, 2 clear
4	7-18	Yellow/Tan Clayey Sandy Silt with roots and rocks (top of stratum compacted)	
5	18-21	Yellow/Orange/Brown Clayey None Sandy Silt with Rocks	

SHOVEL TEST 26

Str. #	Depth (inches)	Description	Cultural Materials
1	0-7	Dark Red/Brown Clayey Silt	1 crown bottle cap ("Heineken Beer") 1 pc rubber/plastic 2 pcs curved glass, clear 9 pcs flat glass, 5 clear, 4 green tinted 4 nails, 3 wire (inc 2 roofing nails), 1 cut 8 pcs shingle (3.7 gms) 2 pcs brick (5.5 gms) 2 pcs mortar (4.2 gms) 4 pcs wood, 1 charred (0.3 gms) 2 pcs coal/cinder (4.3 gms) (Additional Pcs. Coal/Cinder/ Slag Discarded in Field)
2	7-10	Dark Brown/Black Sandy Silt	1 pc flexible plastic, blue and white (possible from table cover) 1 pc blue thin plastic 1 pc curved glass, clear 16 pcs flat glass, 8 clear, 8 green tinted 15 nails; 13 wire, 2 cut 73 pcs shingle (73.6 gms) 9 pcs wood, 1 w. white paint (9.2 gms) (Additional Nails, Wood, Shingle Discarded in Field) 5 pcs brick (12.6 gms) 5 pcs mortar (52.5 gms) 4 pcs oyster shell (10.0 gms) 1 pc charcoal (0.3 gm) 2 pcs coal/cinder/slag (17.2 gms) (Additional Pcs. Coal/Cinder/ Slag Discarded in Field)
3	10-17	Dark Brown Silty Clay (Area of White/Gray Silty Clay Mottling in Eastern Portion of Test)	13 pcs flexible plastic, blue and white (possibly from table cover) 8 pcs flat glass; 4 clear, 4 green tinted 1 sherd earthenware, yellow/buff body, clear glaze (from flat base of vessel) 4 pcs brick (10.9 gms) 2 pcs mortar/plaster (2.8 gms) 16 pcs shingle (11.0 gms) 6 sm pcs wood (0.4 gms)

(Additional Pcs Wood Discarded
in Field)

1 pc mammal bone, rib, cut
(23.0 gms)

4 pcs coal/cinder/slag (7.8 gms)
(Additional Pcs. Coal/Cinder/
Slag Discarded in Field)

4a	17-25	Red/Yellow/Brown Clayey Silt with Dark Brown And White/Gray Clayey Silt and Dark Brown Clayey Silt (Eastern Portion) and	2 sm pcs flat glass, clear 1 pc carbon rod, 5/16" diameter (1.8 gms) 6 sm pcs shingle (0.8 gms) 1 pc wood (1.3 gms) 16 pcs brick (137.9 gms)
4b	17-25	Dark Brown Silty Clay (Western Portion)	
5	25-31	White/Gray Silty Clay	None

SHOVEL TEST 27

Str. #	Depth (inches)	Description	Cultural Materials
1	0-10	Mixed Brown and Red/Brown Sandy Silt	1 pc curved glass, clear 1 lg pc brick, 3 1/2" x 2 1/4" (945.4 gms) 4 pcs brick (30.8 gms) 6 pcs coal/cinder/slag (12.1 gms)
2a	10-12/15	Dark Gray/Brown Sandy Clayey Silt (Intrusive Trench in South Portion of Test)	7 pcs curved glass, 6 clear, 1 aqua 43 pcs flat glass, 27 clear, 6 green tinted, 10 aqua 1 sherd unglazed red earthenware 8 nails, 6 wire, 2 cut 2 pcs shingle (2.4 gms) 5 pcs brick (11.9 gms) 1 pc mortar/concrete w. embedded pcs coal (80.0 gms) 3 pcs mortar/plaster (8.5 gms) 4 pcs charred wood (1.2 gms) 2 pcs mammal long bone, 1 cut (19.9 gms) 44 pcs coal/cinder/slag (219.4 gms) (Additional Pcs. Coal/Cinder/Slag Discarded in Field)
2b	12/15-16	Same Description as 2a	1 pc curved glass, clear 8 pcs flat glass, 2 clear, 6 green tinted 7 nails, 6 wire, 1 unidentified 2 sm pcs brick (3.0 gms) 41 pcs coal/cinder/slag (160.0 gms) (Additional Pcs. Coal/Cinder/Slag Discarded in Field)
3	16-22	Mixed Brown, Gray/Brown and Yellow Sandy Clayey Silt with Mortar (Intrusive Trench in South Portion of Test)	5 nails; 4 wire, 1 unidentified 2 sm pcs mortar/plaster (0.4 gms) 3 pcs brick (7.9 gms) 1 pc mammal long bone, cut marks (11.8 gms) 3 pcs coal (9.9 gms)
4a	22-25	Red/Brown Sandy Silt and	1 pc bottle glass, light green, from neck of screw top? bottle
4b	25-28	Dark Gray Brown Clayey Silt (Intrusive Trench in South Portion of Test)	1 pc brick (3.8 gms) 1 pc mortar/plaster (0.3 gms) 2 pcs coal/cinder (0.7 gms)

5a	28-30	Black Clayey Silt	1 pc curved glass, clear
		and	2 sm pcs brick (0.3 gms)
5b	30-32	Dark Brown Clayey Silt	4 pcs mortar/plaster (3.0 gms)
		with Rocks (Intrusive	1 pc hard shell clam (1.3 gms)
		Trench in South Portion	1 pc mammal bone (0.7 gms)
		of Test)	
6	32-33	Light Gray Silt	None
		(Intrusive	
		Trench in South Portion	
		of Test)	

SHOVEL TEST 28

Str. #	Depth (inches)	Description	Cultural Materials
1	0-3	Dark Brown Clayey Silt	3 pcs thin clear plastic wrapper 1 pc misc plastic 1 pc styrofoam 1 pc aluminum foil 1 crown type bottle cap ("Country Club") 39 pcs curved (bottle) glass; 7 amber, 1 aqua, 5 light green, 10 bright green, 16 clear (inc. 1 from bottle base and 1 from screw top bottle neck) 4 pcs flat glass; 2 clear, 2 green tinted 1 pc wool thread 1 cut nail 1 pc charred wood (0.3 gms) 1 sm pc brick (0.8 gms) 3 pcs coal/cinder/slag (3.6 gms) (Additional Pcs. Coal/Cinder/Slag Discarded in Field)
2	3-13	Dark Red/Brown Clayey Silt (Brick Wall at Base of Test)	3 pcs misc plastic 2 pcs curved glass, clear 3 pcs flat glass, 2 clear, 1 green tinted 3 sm pcs brick (2.2 gms) 1 lg pc sandstone?, possibly building stone (271.0 gms) (Additional Pcs Building Stone Discarded in Field) (Additional Pcs. Coal/Cinder/Slag Discarded in Field)

SHOVEL TEST 29

Str. #	Depth (inches)	Description	Cultural Materials
1	0-17	Medium Brown Sandy Silt with Rocks/Cobbles	4 pcs clear thin plastic 10 pcs curved (bottle) glass 5 amber (inc 1 soda/beer bottle base), 1 bright green, 4 clear (2 w trace molded stippling and lettering) 6 pcs flat glass, 5 clear, 1 green tinted 1 nail fragment, cut 7 pcs shingle (4.5 gms) 1 pc earthenware from drain/sewer pipe, dark brown salt glaze 1 pc ceramic building material 5/8" thick 1 sm pc charred wood (0.1 gms) 3 sm pcs brick (4.1 gms) 3 pcs mortar (7.5 gms) 3 pcs coal/cinder/slag (4.0 gms)
2	17-29	Gray Black Sandy Silt w. Ash and Small Pieces of Wood (Stratum Continues Below Base of Test)	37 pcs flat glass; 12 clear, 25 green tinted 1 pc unidentified synthetic material, black 1 circular pc yellow plastic with attached corroded metal (possibly seal from can cover?) 10 pcs curved glass; 7 clear, 1 green tinted, 1 amber, 1 bright green 2 pcs glass, green tinted, burned 1 sherd unglazed red earthenware 8 nails; 6 wire, 2 cut 1 sm pc fabric 1 pc styrofoam? 1 pc metal pipe or conduit (7/16" diameter) 1 lg pc brick (3 1/2" x 2 1/4") raised manufacturer's brand mark in recessed panel "S&.." (782.1 gms) 38 pcs shingle (42.0 gms) 16 pcs brick (160.1 gms) 5 pcs mortar (673.2 gms), 1 w embedded pcs coal, 1 w attached pc brick and brick impression 10 pcs charcoal (1.0 gms) 1 lg pc plaster (44.6 gms) 6 1 pcs mortar/plaster (135.1 gms), inc. 2 pcs plaster w. trace green

paint
7 0 pcs wood, (56.0 gms), inc. 19
pcs with traces paint, 16 pcs
charred
(Additional Pcs of wood, brick
glass, plaster Discarded in
Field)
18 pcs coal/cinder/slag (85.1 gms)
(Additional Pcs. Coal/Cinder/
Slag Discarded in Field)
1 pc mammal bone, possibly skull
fragment (7.2 gms)

SHOVEL TEST 30

Str. #	Depth (inches)	Description	Cultural Materials
1	0-5	Red/Brown Silty Clayey Silt Mixed with Brown Sandy Silt	1 pc thin blue plastic 13 pcs curved glass; 1 amber w. trace embossed logo (eagle?), 5 clear, 3 light green, 4 bright green
2	5-12	Gray/Brown Clayey Silt and	2 pcs flat glass, clear
3	12-14	Red/Brown Sandy Silt	1 pc from plastic squeeze tube 1 pc wood (6.0 gms) 2 pcs coal (21.3 gms) 1 lg pc brick, 2 1/4" thick (449.4 gms) 7 pcs brick (27.0 gms) (Additional Small Pcs. Wood and Brick Chips Discarded in Field)
4	14-19	Gray/Brown Clayey Sandy Silt Mixed with Red/Brown Sandy Silt (Large Rock at Base of Test)	1 pc earthenware, buff/white body, trace of lines of red/brown slip and clear glaze on one side and dark brown glaze on other side 2 nails, 1 wire, 1 cut 3 pcs brick (36.5 gms) 8 pcs coal/cinder/slag (5.5 gms)

SHOVEL TEST 31

Str. #	Depth (inches)	Description	Cultural Materials
1	0-2	Black Clayey Silt	5 pcs from plastic cup lid 3 pcs misc plastic 1 pc styrofoam 1 pc synthetic fabric (same type as pc from stratum II) 1 pc curved glass, clear 1 pc flat glass, clear 1 pc shingle (0.6 gms) 2 sm pcs coal (0.3 gms) (Additional Pcs. Coal/Cinder/Slag Discarded in Field)
2-13		Gray/Brown Clayey Silt with Lenses of Yellow/Tan Silt in Southern 1/3 of Test	1 pc misc plastic 1 pc synthetic fabric 2 pcs curved glass, bright green 1 pc flat glass, green tinted 1 sm pcs shingle (0.2 gms) 1 pc wood (30.2 gms) 3 pcs oyster shell (0.5 gms) 13 pcs coal/cinder/slag (Additional Pcs. Coal/Cinder/Slag Discarded in Field)
3	13-16	Gray/Brown Clayey Silt with Mottled with Yellow/Brown Clayey Silt	1 pc clear plastic 1 pc curved glass, amber 2 pcs flat glass, clear 1 sm pc oyster shell (0.1 gms) 10 pcs coal/cinder/slag (10.1 gms) (Additional Pcs. Coal/Cinder/Slag Discarded in Field)
4	16-21	Yellow/Brown Clayey Silt	None

SHOVEL TEST 32

Str. #	Depth (inches)	Description	Cultural Materials
1	0-4.5	Mixed Light Brown and Brown/Red Sandy Silt	1 pc milk glass 13 pcs curved glass; 2 amber, 1 bright green, 1 aqua, 9 clear 1 pc mirror glass 2 pcs flat glass, 1 clear, 1 green tinted 1 pc lead foil 2 sm pcs brick (1.1 gms) 4 pcs shingle (13.2 gms) 1 pc charred wood (0.3 gms) 23 pcs coal/cinder/slag (64.9 gms) (Additional Pcs. Coal/Cinder/Slag Discarded in Field)
2	4.5-10.5	Mixed Yellow/Brown and Brown/Red Sandy Silt	3 pcs curved (bottle) glass, 1 green tinted, 2 clear (1 w molded stippling 1 with decal lettering "Cer(tified)/U.S. Pat. Off.") 1 corroded 2" long "bolt", with 5/8" nut at each end 1 corroded pc metal (nail?) 5 pcs mortar/plaster 1 pc shingle (10.7 gms) 1 sm pc charcoal (<0.1 gms) 24 pcs coal/cinder/slag (53.4 gms)
3	10.5-18.5	Light Gray Ash with Cinder and Coal	1 sherd whiteware/ironstone, undecorated, from plate base 1 sherd flat glass, aqua tinted 5 pcs brick (13.1 gms) 1 pc mortar/plaster (12.3 gms) 13 corroded nails/fragments, 7 wire, 6 unidentified 69 pcs coal/cinder/slag (225.1 gms) (Most Coal/Cinder/Slag Discarded in Field)
4	18.5-21.5	Red/Brown Sandy Silt Mixed with Ash	4 pcs flat glass, green tinted 1 pc porcelain floor tile (4 gms) 2 nails, 1 wire, 1 unidentified 1 pc plaster (0.2 gms) 4 pcs brick (263.4 gms) 1 pc mammal bone, cut (5.4 gms) 6 pcs coal/cinder/slag (116.5 gms) (Most Coal/Cinder/Slag Discarded in Field)

5	21.5-34	Gray/Brown Sandy Silt Cinder, Ash and Coal	<p>1 sherd unglazed red earthenware</p> <p>1 pc bottle glass, from base of clear glass medicine type bottle w. rectangular base, 1 1/4' wide</p> <p>7 pcs clear curved (bottle) glass possibly from same bottle as above</p> <p>5 pcs bottle glass, clear, mend to form base and part of sides of bottle/jar, 1 3/4" round base, embossed on side "EBROUGH MFG CO/VASELINE", additional piece with embossed "CH"</p> <p>17 pcs clear bottle glass, some may be from above Vaseline bottle/jar</p> <p>22 pcs bottle glass, aqua, 2 appear burned, 2 from sides of panel type bottle</p> <p>1 pc pencil lead (one end pointed) 1/16" diameter, 7/8" long</p> <p>1 metal belt buckle, iron w. trace gold? plating 2" x 1 1/4"</p> <p>1 porcelain circular door knob "strike plate", 2" diameter, with central opening</p> <p>6 pcs corroded metal (19.5 gms)</p> <p>1 pc metal wire 1/16" diameter, copper alloy</p> <p>14 nails 12 wire, 2 cut</p> <p>1 wood screw, non-ferrous metal</p> <p>5 pcs brick (83.4 gms)</p> <p>4 pcs mortar (32.5 gms)</p> <p>1 pc plaster? (<0.1 gms)</p> <p>10 pcs charred wood (3.0 gms)</p> <p>1 pc mammal bone (1.0 gms)</p> <p>44 pcs coal/cinder/slag (100.8 gms)</p> <p>(Most Coal/Cinder/Slag Discarded in Field)</p>
6	34-35	Yellow/Gray Silt	None

SHOVEL TEST 33

Str. #	Depth (inches)	Description	Cultural Materials
1	0-4	Black Sandy Silt	4 sm pcs thin plastic 5 sm pcs aluminum foil 1 sherd soft paste porcelain undecorated 67 pcs curved glass; 1 aqua, 3 bright green, 6 dark green, 44 amber (2 w. molded stippling - 2 w molded lettering "4/5 QUART"), 13 clear (1 w. trace decal lettering and 4 w molded stippling and lettering ..(fill) "to line" 11 pcs flat glass, aqua 2 corroded nail fragments, 1 wire 1 unidentified 1 pc shingle (0.5 gms) 5 sm pcs charcoal (0.1 gms) 17 pcs coal/cinder/slag (74.6 gms) (Additional Pcs. Coal/Cinder/ Slag Discarded in Field)
2	4-10	Dark Brown Clayey Silt with Rocks and Lens of Coal/Slag, and Lenses of Yellow/Tan Sandy Silt in first 3" of Stratum	1 sherd whiteware 8 pcs curved glass, 1 clear, 2 aqua 4 amber, 1 purple (w trace embossed lettering) 1 pc lamp? glass, clear 2 pcs flat glass, 1 clear, 1 aqua 3 nails/fragments, 1 wire, 2 unidentified 6 sm pcs brick (3.3 gms) 6 sm pcs wood (0.7 gms) 16 pcs mammal bone (6 cut), 4 from lg mammal long bone end (79.8 gms) 3 pcs bird bone (2.5 gms) Additional small pcs mammal/bird bone (3/4 gms) 1 sm pc charcoal (<0.1 gms) 31 pcs coal/cinder/slag (124.7 gms) (Additional Pcs. Coal/Cinder/ Slag Discarded in Field)
3	10-12	Gray/Yellow/Tan Clayey Silt	3 pc curved glass, 1 light green, 1 amber, 1 purple 5 pcs mammal bone, cut (13.4 gms) Mammal bone small fragments (1.1 gms) 2 pc brick (1.9 gms) 33 pcs coal/cinder/slag (87.2 gms)

(Additional Pcs. Coal/Cinder/
Slag Discarded in Field)

4	12-18	Gray/Brown Clayey Silt	1 pc curved glass, clear 1 pc shingle (0.9 gms) 1 pc mammal bone, cut, probably rib (5.3 gms) 9 pcs coal/cinder/slag (46.1 gms) (Additional Pcs. Coal/Cinder/ Slag Discarded in Field)
5	18-24	Gray/Brown Clayey Silt with Yellow/Brown Clayey Silt Mottling	1 pc mammal bone, probably from rib 3 pcs coal/cinder/slag (15.8 gms)
6	24-25	Yellow/Brown Clayey Silt	None

SHOVEL TEST 34

Str. #	Depth (inches)	Description	Cultural Materials
1	0-4	Compact Dark Brown/Black Sandy Silt	1 sherd unglazed red earthenware from flowerpot rim 2 pcs curved glass, 1 amber, 1 clear 1 pc flat glass clear 1 pc building stone? (92.2 gms) 1 corroded nail fragment, unidentified type 1 pc charred wood (2.2 gms) 1 lg pc brick (3 5/8 x 2 1/8"), 1 edge glazed, holes (ca 1") thru brick (1290.6 gms) 3 pcs brick (10.0 gms) 3 pcs mortar (10.2 gms) 38 pcs coal/cinder/slag (119.7 gms) (Additional Pcs. Coal/Cinder/Slag Discarded in Field)
2	4-9	Compact Dark Brown and Dark Red/Brown Sandy Silt with Lenses of Ash and Coal	1 pc brick (8.0 gms) 13 pcs coal/cinder/slag (34.6 gms) (Additional Pcs. Coal/Cinder/Slag Discarded in Field)
3	9-11	Light Gray/Brown Sandy Silt	2 sherds porcelain (rim sherds), undecorated 18 pcs coal/cinder/slag (27.0 gms) (Additional Pcs. Coal/Cinder/Slag Discarded in Field)
4	11-12	Light Gray/Brown Sandy Silt Mottled with Yellow/Tan Sandy Silt	16 pcs coal/cinder/slag (13.8 gms) (Additional Pcs. Coal/Cinder/Slag Discarded in Field)
5	12-18	Yellow/Tan Sandy Silt	None

SHOVEL TEST 35

Str. #	Depth (inches)	Description	Cultural Materials
1	0-6	Orange/Brown Sandy Silt Mixed with Brown Sandy Silt	1 pc misc plastic 10 pcs curved glass, 1 dark green 4 bright green, 2 aqua, 3 clear 2 pcs flat glass, 1 clear, 1 aqua 7 pcs coal/cinder/slag (16.5 gms)
2	6-11	Mixed Dark Brown and Light Brown Sandy Clayey Silt	1 bottle neck, aqua, mold seam to top of rim 7 pcs bottle glass; 1 amber, 1 aqua, 2 bright green, 3 clear (2 with molded stippling) 2 pcs misc plastic 1 pc rubber 1 lg metal bracket 2 pcs misc corroded metal (35.3 gms) 2 pcs wood 0.2 gms) 1 lg pc corroded sheet metal (2 pcs - 65.8 gms broken off and saved) 1 pc mortar/plaster (14.5 gms) 2 pcs coal (3.6 gms) 1 fractured quartz cobble, 1 edge battered possibly worked (28.8 gms)
3	11-19	Orange/Brown Clayey Silt with some Brown Mottling	1 pc curved glass, clear 4 pcs coal (14.5 gms)
4	19-21	Mixed Gray Black Silty Clay, Gray Clayey Silt and Orange/Brown Clayey Silt	None
5	21-31	Gray/Black Silty Clay	None

SHOVEL TEST 36

Str. #	Depth (inches)	Description	Cultural Materials
1	0-1	Sod and	1 sm pc thin plastic package wrap
2	1-4	Black Sandy Silt	23 sherds whiteware/ironstone, undecorated 8 sherds whiteware/ironstone, underglaze blue transfer printed, from same vessel (plate?) 1 sherd whiteware/ironstone, underglaze blue/green decoration below rim 9 sherds whiteware/ironstone, from rim of plate/bowl, overglaze polychrome painted decoration below rim 1 pc from neck of screw top jar or lg mouth bottle, rim diameter 1 3/4" 5 pcs layered "sandwich" type glass 27 pc curved glass; 11 clear, 3 light green, 2 bright green, 7 amber (2 from bottle base), 4 dark green 2 pc flat glass, green tinted 1 lg pc from "rectangular" ceramic drain pipe (357.1 gms) 2 pcs buff bodied stoneware, light brown salt glaze, probably from sewer/drain pipe 8 pcs brick (104.6 gms) 2 pcs asphalt paving material (35.0 gms) 63 pcs coal/cinder/slag (227.1 gms) 1 sm pc charcoal (<0.1 gm) (Additional Pcs. Coal/Cinder/Slag Discarded in Field)
3	4-10	Red/Brown Sandy Silt	1 pc flat glass, clear 2 pcs curved glass, 1 clear, 1 dark green 2 pcs charcoal (0.7 gms) 25 pcs coal/cinder/slag (47.4 gms) (Additional Pcs. Coal/Cinder/Slag Discarded in Field)
4	10-14	Gray/Brown Sandy Silt	3 pcs misc plastic 1 pc styrofoam 2 sherds whiteware/ironstone undecorated (1 lg rim sherd fractured into four pcs during excavation)

5 pcs curved (bottle) glass; 1 dark
green, 1 bright green, 3 clear
1 sm pc brick (0.1 gms)
15 pcs coal/cinder/slag (104.3 gms)
(Additional Pcs. Coal/Cinder/
Slag Discarded in Field)

5	14-18	Gray/Brown Sandy Silt with Yellow/Brown Clayey Silt Mottling	4 pcs coal/cinder/slag (4.0 gms)
6	18-24	Yellow/Brown Clayey Silt	None
