

Landmarks Preservation Commission  
April 16, 1991; Designation List 234  
LP-1686

335 WEST 85th STREET HOUSE, 335 West 85th Street, Borough of Manhattan.  
Built 1890-91; architect Ralph S. Townsend.

Landmark Site: Borough of Manhattan Tax Map Block 1247, Lot 19.

On July 12, 1988, the Landmarks Preservation Commission held a public hearing on the proposed designation as a Landmark of the 335 West 85th Street House and the proposed designation of the related Landmark Site (Item No. 24). The hearing had been duly advertised in accordance with the provisions of law. Eight witnesses spoke in favor of designation. There were no speakers in opposition to designation. Three letters have been received in favor of designation.

#### DESCRIPTION AND ANALYSIS

##### Summary

Constructed in 1890-91 for the builder-speculator Perez M. Stewart at a time when the blocks in the Eighties west of Broadway were first developed, the 335 West 85th Street House is one house in a row of five nearly identical houses on the north side of West 85th Street between West End Avenue and Riverside Drive. Ralph S. Townsend, the noted architect, employed an eclectic architectural vocabulary -- Romanesque Revival elements as well as Queen Anne motifs -- to create an original facade design for No. 335 that can be seen as a late but highly successful example of the architecture of the Aesthetic Movement. Although the horizontal architectural elements and the picturesque towered silhouette relate it to the other four facades in the row, No. 335's facade of three stories with a basement, executed in contrasting brownstone and brick, is designed as a vertical unit. The expressive correspondence between the exaggerated and superimposed architectural components within this facade -- the coupled windows, their segmental, flat, and round-arched window heads, the smooth-faced and rough-cut voussoirs -- suggest structural support for the tower-like western bay. The carved foliate motifs provide details of special interest. Townsend's inventive facade treatment survives largely intact.

##### The Development of the Upper West Side

The evolution of the present appearance of West 85th Street between West End Avenue and Riverside Drive is a reflection of the Upper West Side's greater development. Largely undeveloped until the 1880s, the area was known as "Bloomingdale" prior to urbanization and was comprised of working farms in the eighteenth century and landed estates in the early nineteenth century. While included in the Commissioners' Map of 1811, which platted a grid of avenues and streets in Manhattan as far north as 155th Street, the area remained essentially rural and most of the streets were not laid out until after the Civil War. The creation of Central Park beginning in 1857

likely that Ralph S. Townsend, the architect, was the son of Ralph Townsend, the carpenter/builder.<sup>2</sup> Ralph S. Townsend was a member of the Architectural League from 1899 until his death in 1921.<sup>3</sup>

Best known for his rowhouses and multiple dwellings in Greenwich Village, west midtown, and the Upper West Side (examples are located in the Greenwich Village, Riverside/West 80-81st Street, and Upper West Side/Central Park West Historic Districts), Townsend's first published commission was the apartment house he designed for the developer J.S. Pruden at 360-362 West 51st Street which appeared in the Builder and Woodworker, (Nov., 1881).<sup>4</sup> A detailed discussion of the interior finishes, suggesting an abundance of carpentry -- the kind of work the Builder and Woodworker promulgated for its readership of carpenter/builders-- accompanied an illustration of the facade, rich with Neo-Grec references. It is likely that the elder Townsend was responsible for Ralph Samuel's architectural education and the two, one a carpenter/builder and the other a young architect, collaborated throughout the 1880s and into the early 1890s. The directories give no business address for the elder Ralph Townsend after 1906, by which time Ralph Samuel Townsend had formed a partnership with Charles A. Steinle and William C. Haskell. The firm of Townsend, Steinle & Haskell was especially known for its designs of large apartment buildings and was financially involved in many of its projects.

#### Design and Construction

No. 335 West 85th Street (Plate 1) was built as one of five first-class, single-family dwellings.<sup>5</sup> This house exemplifies the architecture of the Aesthetic Movement, a progressive movement in England and the United States, which reached its zenith of popularity in the early 1880s. One of the components of this aesthetic, the "Queen Anne" style, is characterized by the rich and eclectic blend of a variety of elements common to vernacular Elizabethan and seventeenth- and eighteenth-century architecture, as well as an occasional reference to the West's recently discovered arts of Japan. Although much of the architectural vocabulary of this narrow, towered facade -- the arches and round-headed windows, the rough-cut rusticated stonework, and second-story voussoir course -- recalls the Richardsonian Romanesque,<sup>6</sup> these forms have been tempered for use with other, more delicate elements characteristic of the Queen Anne style: the thin columnar mullions of wood in the broad first-story window; the smooth-faced basement and first-story window voussoirs; the rinceaux in the tower's metal entablature frieze; and the spindly baluster and grid panels -- a Japanese motif -- in the tower's metal parapet. Another feature of the Queen Anne aesthetic that distinguishes this composition is the inventive vertical correspondence of a variety of architectural details, expressive components within an extraordinary three-story scheme of superimposed textural contrasts, which, in turn, suggest support for the pyramidally-capped tower-like western bay.

Architects of rowhouses on the Upper West Side designed rows as coherent units, but the individual houses varied in their details and were often arranged in a rhythmic pattern. Although the houses in this row are united by corresponding materials (rusticated stone facing at the basement

and first story and brick at the second and third stories), by horizontal elements such as sill and lintel courses, by a repetitive arrangement of the window openings, and by a staccato rhythm of the drip moldings and towers, a conscious effort was made to differentiate the ornamental details from house to house in this row. The dominant verticality of No. 335's facade contributes to its individual identity. The verticality of each facade is also Townsend's solution to the problem of aligning a row of near-identical facades built along a slight rise -- from east to west -- in the topography of the site. No. 335 and the two houses flanking it are higher than the first houses in the row. The variety of stylized Romanesque-inspired foliated motifs on springers, annulets, corbels, and keystones gives each facade a distinct identity and vitality. The very distinctive carving is most likely reproduced from contemporary published sources.

### Description

This three-story house with a high basement is twenty feet wide, fifty-five feet deep, and forty-seven feet to the top of the tower (Plate 2). The rusticated basement and first story are faced with rough-cut Connecticut brownstone ashlar; the second and third stories are red brick with brownstone trim (all now painted). The entablature and tower parapet are metal. The original main entrance (now the eastern first-story window) and the tower (not specifically articulated until the third story) dictated the organization of the facade into two bays. Defined by the rough-hewn stonework of the basement and first story, the narrow bay on the east and the wider bay on the west can also be read in the consistent width and architectural treatment of the fenestration in the upper stories.

The present entrance at the basement level of the narrow bay was once contained below the original box stoop (Plate 1, removed in 1957-60). It is now protected by a quarter-spherical canvas canopy. The two basement windows with their segmental heads are articulated together at the base of the wider bay by the smooth-faced ashlar of their surrounds, keyed into the rustication; their smooth-faced voussoirs extend up to the first-story sill course (Plate 2). The basement window springers bear individualized carvings of stylized Romanesque foliated motifs. The entrance door (not original) is a single pane of etched glass. The basement windows have one-over-one wood sash; the wrought-iron window grilles are the only original ones left in the row.

The narrow eastern bay on the first story now contains a double window (with one-over-one wood sash) in the arched opening where the original main entrance was once located; the original fanlight remains (Plate 3). Within the wider bay there is a broad, segmentally-headed window (Plate 2). Two columnar mullions of wood support three one-over-one wood sash windows, a wider one flanked by narrow ones.<sup>7</sup> A dentil molding heads each window. The transoms above are filled with leaded glass in an imbricated pattern. The glass has a yellowish tint; the lozenge in the central transom is light blue. The smooth-faced window surrounds and attenuated voussoirs of both windows are keyed into the rustication. The three springers carry three more variations of the stylized Romanesque foliated ornament. Both of these

arches are locked with tall keystones which reach the second story sill course. Both are carved: the keystone on the east (the original entrance) carries the mask of a mustachioed face emerging from stylized foliation (plate 3); the keystone on the west has been parged to resemble a convoluted twig (Plate 2). The shaft which rises from a corbel just above the western springer both defines the facade's western edge and the western corner of the tower. The corbel has been carved to represent the face of a woman.

The second story has three window openings; the two in the wider bay are paired by a gadrooned (basin-like) sill which incorporates the running sill course. Another of the row's horizontal elements, the rusticated lintel course, incorporates voussoirs over the windows. At the third story, the shaft defining the tower's eastern edge rises from the running sill course. The windows in the wider, tower-like bay are arched; they are paired by a drip molding. The window in the narrow bay has a protruding (basin-like) sill incorporating the running sill course; the sill's carved surface carries a convex rondel surrounded by foliation. The transom is subdivided into two parts by a stone mullion. The same drip molding, continued from above the paired windows in the wider bay, here defines the right angles of the window head. The metal cornice above it is modillioned. The second- and third-story windows have one-over-one wood sash.

The tower's stone corner shafts, ringed by annulets, both plain and foliated, where they are crossed by the horizontal courses, rise up the facade, penetrating the entablature and the parapet and once terminate as unarticulated cylindrical finials (originally thickly foliated). Above the cornice, the shafts are metal. Only No. 335 retains these shaft terminating elements. A high-relief pressed-metal rinceau decorates the entablature's frieze. The parapet, also pressed-metal, is articulated by alternating panels of spindle balusters and thick grids. The tower's pyramidal roof, distinguished by a blind eyebrow opening, is topped with a metal finial. The tower roof and the false mansard above the narrow bay are covered with slate.

### Subsequent History

Perez Stewart sold No.335 fifteen days after it was completed.<sup>8</sup> On October 5, 1954, this house (and all of the others) was purchased by Havens Enterprises, Inc., which commissioned Wechsler & Schimenti, Architects, to remove the stoop, and remove the existing main entrance door, replacing it with a pair of sash windows.<sup>9</sup> A new, wood "colonial" style door and frame replaced the original basement entrance and this facade was painted a cream color. No. 335 became a multiple dwelling after this alteration.

A subsequent renovation occurred when this house (with the others in the row) became a co-operative apartment complex in 1988. The architect Manuel Angel Santiago redesigned the areaway, installing brick planters and bluestone paving. A fire-resistant canopy on an aluminum frame was placed above the new aluminum door and new light fixtures were placed within the canopy. The facade has been repainted: the ashlar trim and ornamental surfaces a rosy brownstone color. The second and third story trim is cream. The brick surface and the metal elements are the rosy brownstone color.

Except for the missing stoop, this facade is relatively intact. The tower cornice has lost some of its detail and neither shaft finial is articulated. The spring block, shared by both first-story window arches, and the keystone and adjacent voussoirs of the wider of these arches have been reparged and carry ornament that is Romanesque in spirit though lacking the incisive definition which distinguishes the original ornamental details. The under surface of the third-story window's basin sill has also been reparged.

Report prepared by  
Charles Savage,  
Research Department

Report edited by  
Elisa Urbanelli,  
Research Department

#### NOTES

1. Sarah Bradford Landau, "The Rowhouses of New York's West Side," Journal of the Society of Architectural Historians 34, no. 1 (Mar., 1975), 20.
2. Ralph Samuel Townsend's place of residence changed often. A review of his residential addresses finds him residing in a sequence of his recently completed commissions. For example, in 1892 he designed a multiple dwelling for Wilcox & Ames at 330 West 88th Street, completed the following year. He is recorded as residing there, 1894-96.
3. In 1899 Townsend was captioned as an associate member of the American Art Society -- Moses King, Notable New Yorkers 1896-99 (Boston, 1899), 397. No records for an American Art Society exist. Townsend was not a member of the Society of American Artists. The reference in Notable New Yorkers appears to be inaccurate.
4. "Apartment House," Builder and Woodworker 17, no. 11 (Nov., 1881), 190, pl. 84. This periodical was subtitled "A Journal of the Industrial Art." Townsend worked for Pruden subsequently: French flats west of Central Park West on West 66th Street, 1892-93. New York City, Department of Buildings, Manhattan. Plans, Permits and Dockets. NB 370-1892.
5. NYC, Department of Buildings, Manhattan. Plans, Permits and Dockets, Block 1247, Lot 19. NB 1170-1890.
6. The architect Henry Hobson Richardson (1838-1886), trained at the Ecole des Beaux-Arts, popularized the revival of the architecture of tenth and eleventh century France in this country.

7. The original carved detail of these mullions -- the turnings, fluting, the capitals, as well as the deeply beveled panels above -- remain intact.
8. Patrick J. O'Keefe bought No. 335 in 1910, No. 331 in 1922, No. 329 and eight days later No. 337 in 1930. No. 333 was conveyed to O'Keefe's estate in 1938 by Richard H. O'Keefe, reuniting the row under single ownership.
9. The drawing of the projected elevation renovation indicates that steel casements were called for -- NYC, Department of Buildings, Manhattan. Plans, Permits and Dockets, Block 1247, Lot 19. ALT. 875-1954. But the paired one-over-one sash are shown in a photograph taken in 1985 before the subsequent renovation. The steel casements may never have been installed.

## FINDINGS AND DESIGNATION

On the basis of a careful consideration of the history, the architecture and other features of this building, the Landmarks Preservation Commission finds that the 335 West 85th Street House has a special character, special historical and aesthetic interest and value as part of the development, heritage and cultural characteristics of New York City.

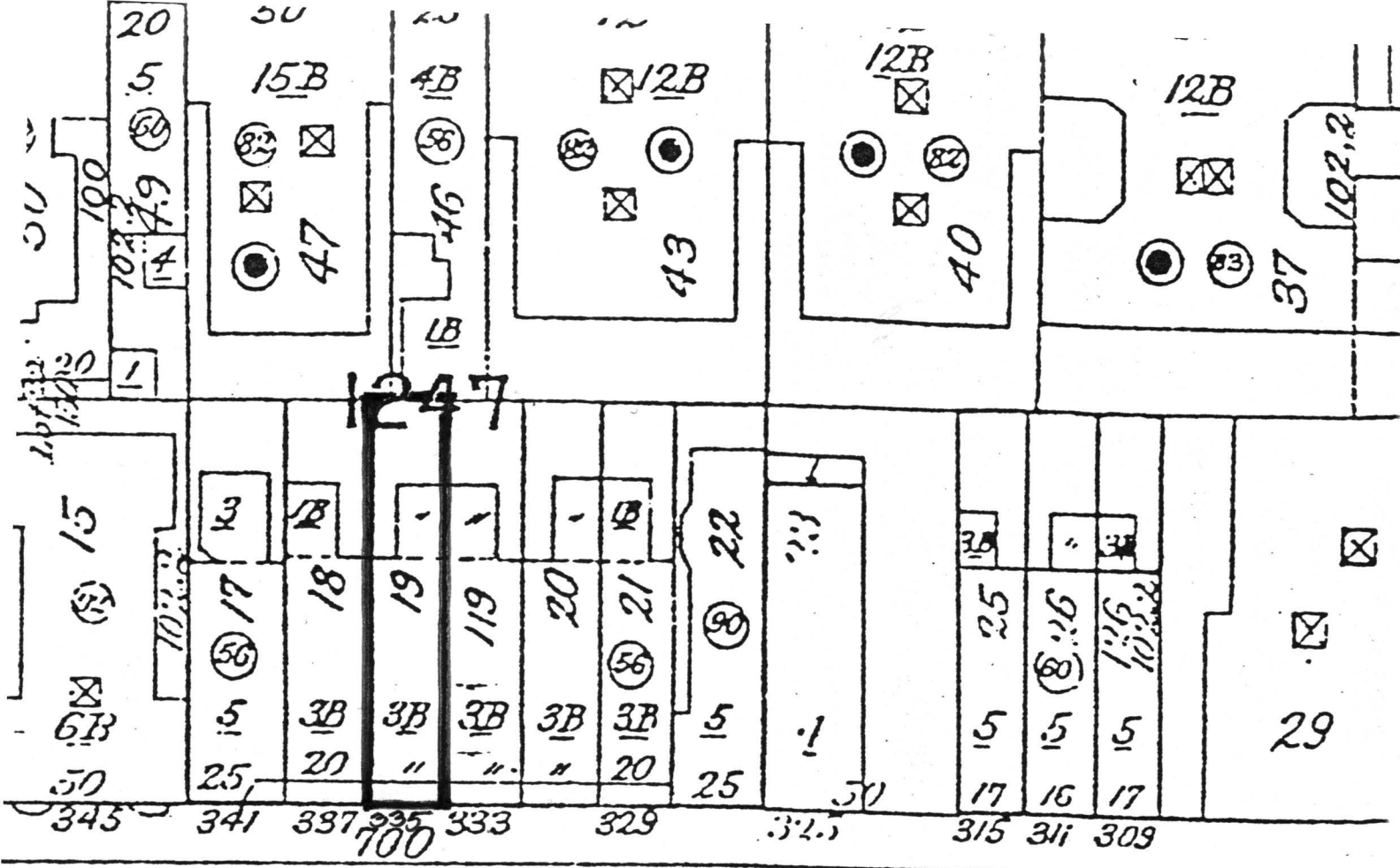
The Commission further finds that, among its important qualities, the 335 West 85th Street House, constructed in 1890-91 for the builder-speculator Perez M. Stewart at a time when the blocks in the Eighties west of Broadway were first developed, was one house in a row of five nearly identical houses; that the noted architect Ralph S. Townsend employed an eclectic architectural vocabulary in the design of the brick and brownstone facade that includes generalized Romanesque Revival style elements and Queen Anne style motifs which create a striking and highly successful example of the architecture of the Aesthetic Movement; that the expressive correspondence between the superimposed architectural components within this facade such as the varied types of window openings and the tower-like western bay, as well as the variety of carved stylized foliated motifs, contribute to No. 335's individual identity; and that Townsend's inventive facade treatment remains largely intact.

Accordingly, pursuant to the provisions of Chapter 74, Section 3020 (formerly Section 534 of Chapter 21) of the Charter of the City of New York and Chapter 3 of Title 25 of the Administrative Code of the City of New York, the Landmarks Preservation Commission designates as a Landmark the 335 West 85th Street House, 335 West 85th Street, Borough of Manhattan, and designates Tax Map Block 1247, Lot 19, Borough of Manhattan, as its Landmark Site.

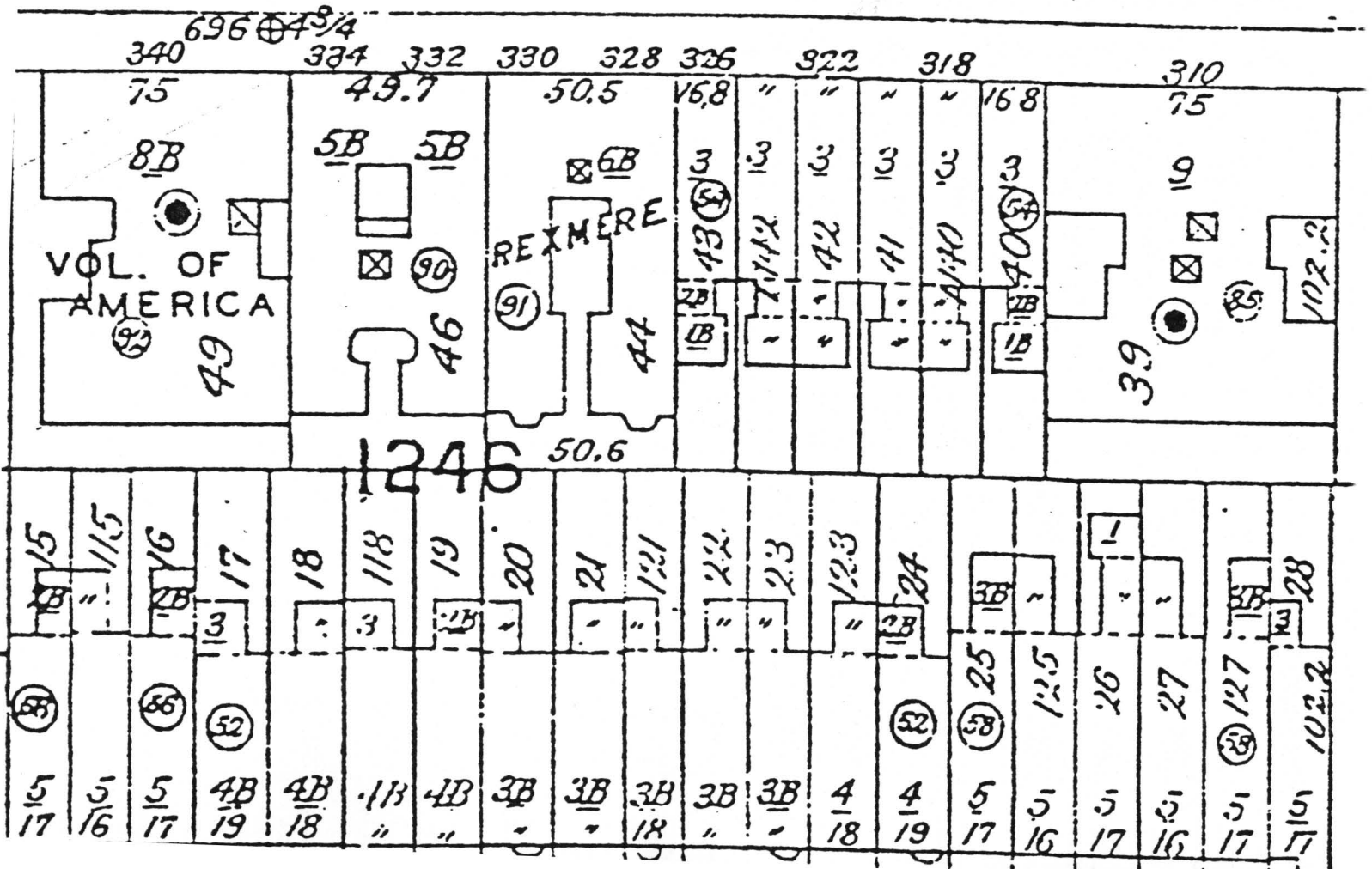
#### BIBLIOGRAPHY

- Annual Reports. Architectural League of New York. 1899-1923.
- "Apartment House." Builder and Woodworker 17, no. 11 (Nov., 1881), 190, pl. 84.
- Francis, Dennis Steadman. Architects in Practice in New York City 1840-1900. New York: Committee for the Preservation of Architectural Records, 1979.
- King, Moses. King's Notable New Yorkers of 1896-99. Boston: Moses King, 1899.
- Landau, Sarah Bradford. "The Rowhouses of New York's West Side." Journal of the Society of Architectural Historians 34, no. 1 (Mar., 1975), 19-36.
- Landmarks Preservation Commission. Upper West Side/Central Park West Historic District Designation Report (LP-1647). Report prepared by the Research Department. New York: City of New York, 1990. Riverside-West End Historic District Designation Report (LP-1626). Report prepared by the Research Department. New York: City of New York, 1989.
- New York City. Department of Buildings, Manhattan. Plans, Permits and Dockets. Block 1247, Lot 19.
- New York County. Office of the Register. Liber Deeds and Conveyances.
- Trow's New York City Directories. New York: John F. Trow, 1871-1911.





W. 85TH



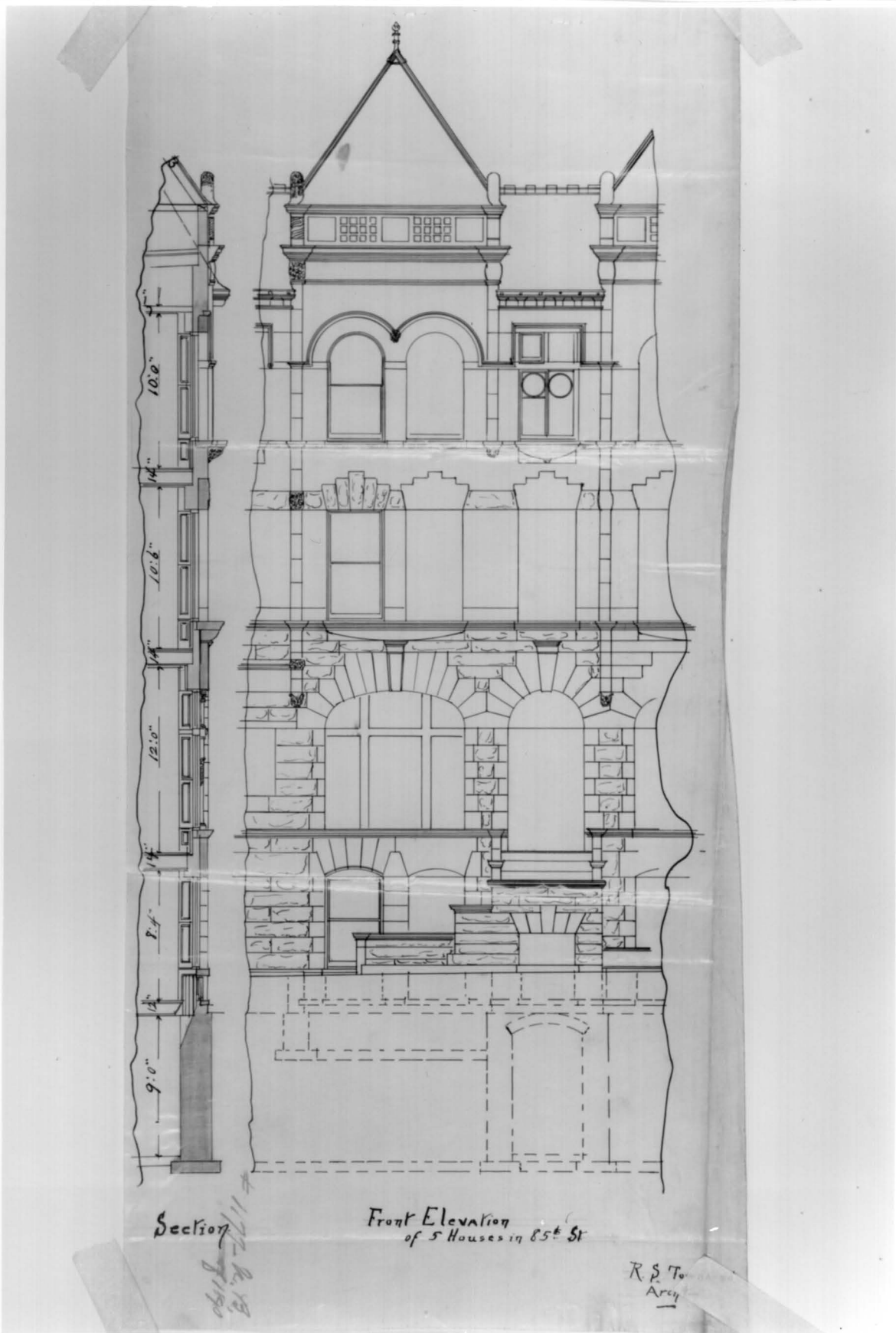
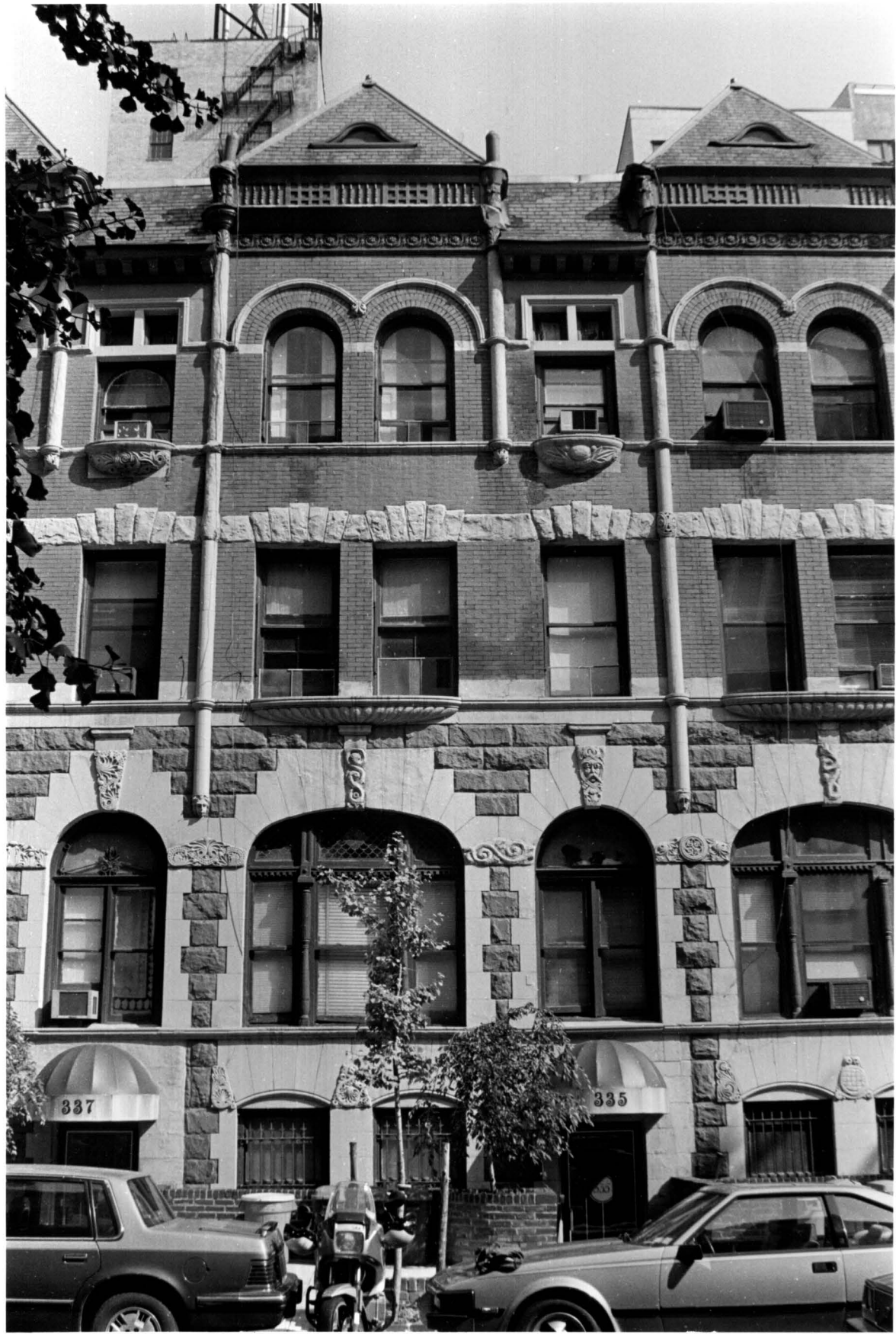


Plate 1. Ralph S. Townsend. Front elevation (for five houses, 329-337 West 85th Street). New York City. Buildings Department, Manhattan.



(Carl Forster)

Plate 2. 335 West 85th Street.



Plate 3. 335 West 85th Street. Detail, first story.

(Carl Forster)