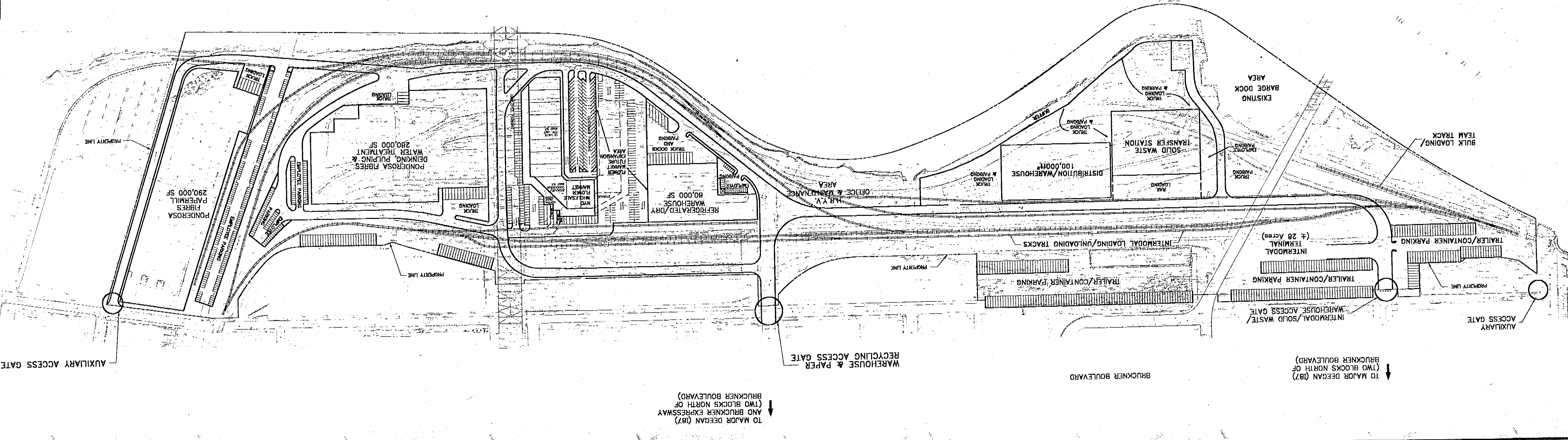
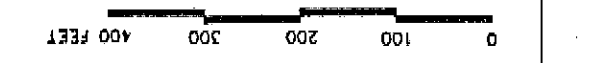


HARLEM RIVER YARD VENTURES INC. INTERMODAL TRANSPORTATION AND DISTRIBUTION CENTER WASTE PAPER RECYCLING OPTION LAND USE PLAN



AUXILIARY ACCESS GATE

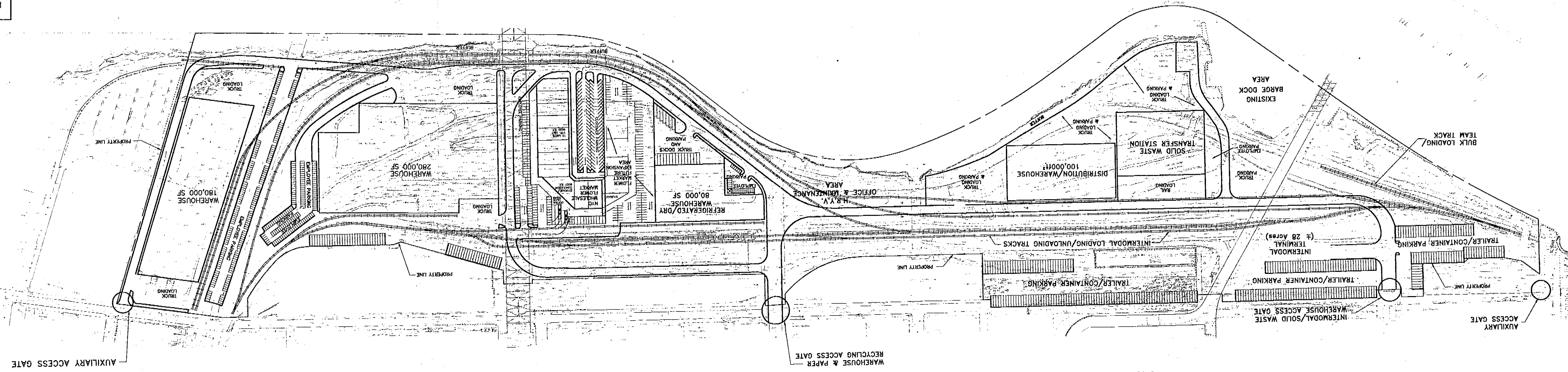
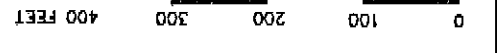
TO MAJOR DEGAN (187) AND BRUCKNER EXPRESSWAY AND BRUCKNER BOULEVARD

WAREHOUSE & PAPER RECYCLING ACCESS GATE

BRUCKNER BOULEVARD

TO MAJOR DEGAN (187) (TWO BLOCKS NORTH OF BRUCKNER BOULEVARD)

AUXILIARY ACCESS GATE



AUXILIARY ACCESS GATE

WAREHOUSE & PAPER  
 RECYCLING ACCESS GATE

BRUCKNER BOULEVARD

↓ TO MAJOR DEGAN (Q87)  
 AND BRUCKNER EXPRESSWAY  
 (TWO BLOCKS NORTH OF  
 BRUCKNER BOULEVARD)

↓ TO MAJOR DEGAN (Q87)  
 (TWO BLOCKS NORTH OF  
 BRUCKNER BOULEVARD)

AUXILIARY  
 ACCESS GATE

INTERMODAL/SOLID WASTE  
 WAREHOUSE ACCESS GATE

TRAILER/CONTAINER PARKING

INTERMODAL  
 TERMINAL  
 (± 28 Acres)

TRAILER/CONTAINER PARKING

TRAILER/CONTAINER PARKING

INTERMODAL LOADING/UNLOADING TRACKS

TRAILER/CONTAINER PARKING

TRUCK  
 PARKING

TRUCK  
 PARKING

EXISTING  
 BARGE DOCK  
 AREA

BULK LOADING/  
 TEAM TRACK

SOLID WASTE  
 TRANSFER STATION

DISTRIBUTION/WAREHOUSE  
 100,000 SF

OFFICE & MAINTENANCE  
 AREA  
 H.B.V.

WAREHOUSE/DRY  
 80,000 SF

WAREHOUSE  
 280,000 SF

WAREHOUSE  
 180,000 SF

PROPERTY LINE

PROPERTY LINE

PROPERTY LINE

PROPERTY LINE

TRUCK  
 LOADING

TRUCK  
 LOADING

TRUCK  
 LOADING

TRUCK  
 DOCKS  
 AND  
 PARKING

TRUCK  
 DOCKS

TRUCK  
 DOCKS

TRUCK  
 DOCKS

TRUCK  
 DOCKS

TRUCK  
 DOCKS

TRUCK  
 DOCKS

TRUCK  
 DOCKS

TRUCK  
 DOCKS

TRUCK  
 DOCKS

TRUCK  
 DOCKS

TRUCK  
 DOCKS

TRUCK  
 DOCKS

TRUCK  
 DOCKS

TRUCK  
 DOCKS