



To: City of New York – Landmarks Preservation Commission
City of New York – Office of the Medical Examiner
City of New York – Department of Health
Federal Reserve Bank of New York
Maiden & Nassau, LLC – CBRE Property Management
Turner Construction Company
Beyer, Binder, Belle Architects

RE: End of Field Memorandum for Phase IB Cultural Resource Management/Archaeological Monitoring Services associated with the John Street Plaza Restoration (48 John Street, New York, New York County, New York) Project Number: M113579

From: Alyssa Loorya, Ph.D., R.P.A., Principal Investigator, Christopher Ricciardi, Ph.D., R.P.A. and Rosita Tirado

Date: May 18, 2022

Chrysalis Archaeological Consultants, Inc. (Chrysalis), was retained by Maiden & Nassau, LLC – CBRE Property Management on behalf of the Federal Reserve Bank of New York and their construction contractor, Turner Construction Company, herein The Project Team, to undertake Phase IB Archaeological Monitoring exclusively for the identification and potential recovery of human remains only, as part of the John Street Plaza Restoration Project (48 John Street), New York, New York County, New York (Map 1 and 2). The project site was once part of the neighboring St. John's Church property.

Based on coordination with the City of New York – Landmarks Preservation Commission (NYC LPC), including excavations in 1986, the project was not subject to Phase IB Archaeological Assessment. Rather, the project operated under an Unanticipated Discovery Plan that stated in the event human remain(s) were uncovered an archaeologist would be brought in to handle the situation (URS-AKRF 2010).

In September 2021, during ongoing construction excavation activities, a fragmented human femur was uncovered (Image 1). The Project Team contacted the NYC LPC and Chrysalis to discuss next steps. Both the New York City Police Department (NYPD) and the City of New York – Office of the Medical Examiner (NYC OME) were contacted regarding the initial discovery. Upon confirmation that the remains were "historic" from an area of disturbance on site, representatives from NYC OME removed the single skeletal remain and remanded it to their offices.

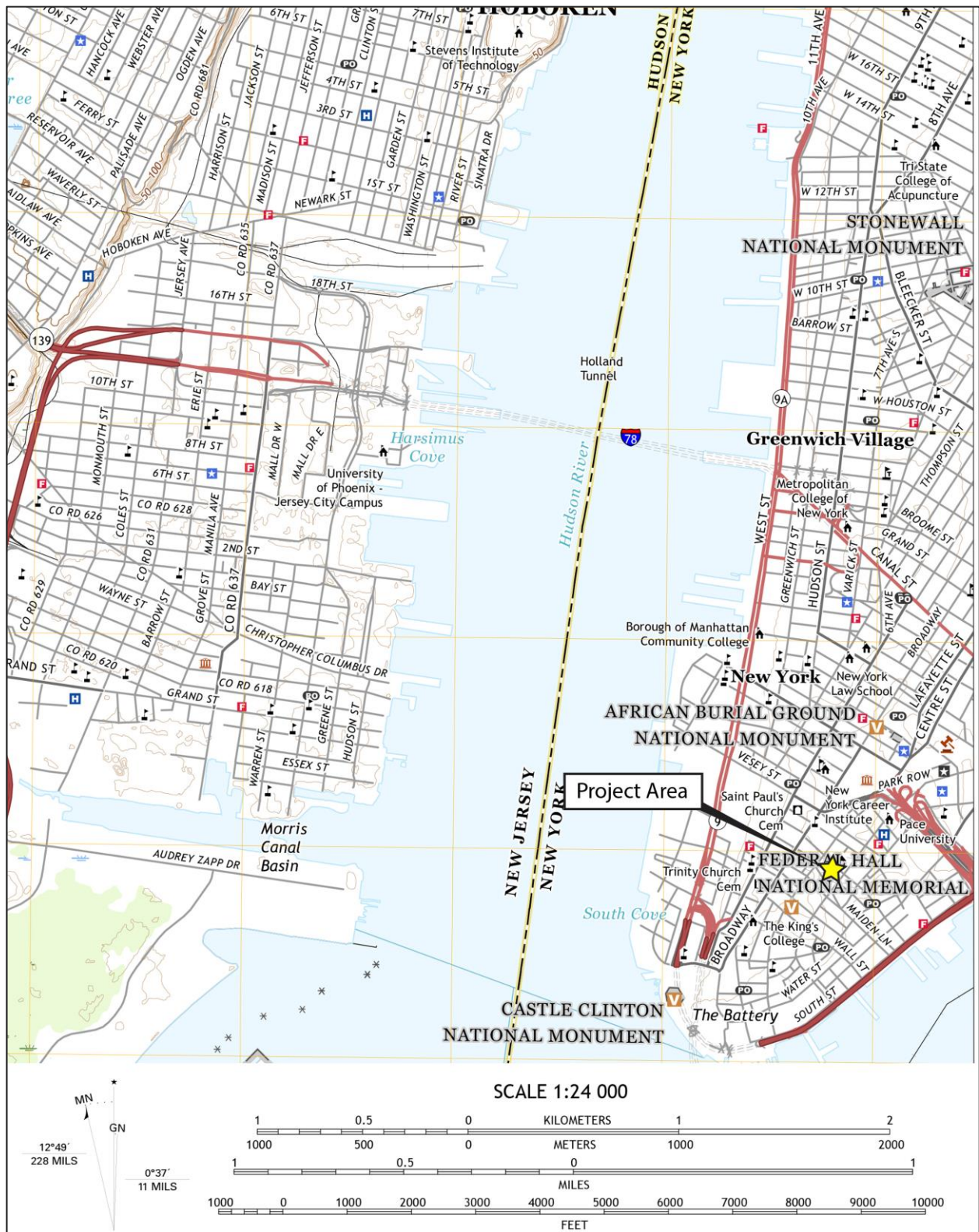
Chrysalis was retained by the Project Team in October 2021 and an updated Archaeological Work Plan (AWP) was developed and approved by the Project Team and the NYC LPC. Chrysalis' on-call Funeral Director, Doris V. Amen, L.F.D., Jurek-Park Slope Funeral Homes, Inc., (Jurek), filed with the City of New York – Department of Health (NYC DOH) for a Disinterment Permit for the project (Image 2). As per NYC DOH guidelines, Ms. Amen transported the fragmented remain from the NYC OME back to the project site for reinterment.

The updated AWP called for archaeological monitoring during excavation portions of the project to ensure that if additional human remains were unearthed, they would be documented and handled appropriately. The Project Team reiterated that archaeological monitoring was only for human remains and that any other cultural resources were not to be documented as part of the archaeological monitoring.

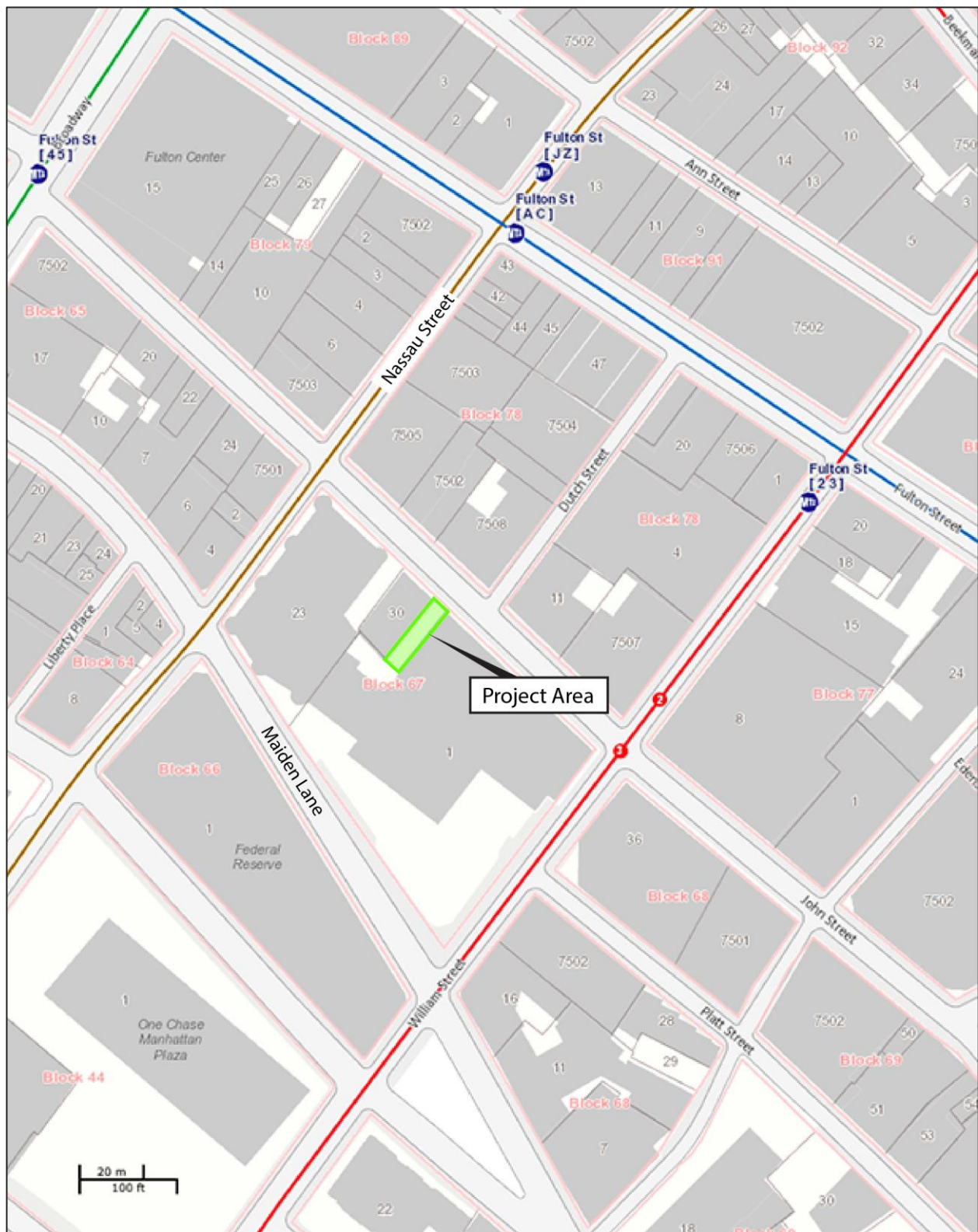
Archaeological monitoring occurred between October 2021 and April 2022 (Images 3 - 4). In November 2021, an additional fragmented human skeletal remain was recovered from within the same disturbed context/area that the initial skeletal remain was located (Image 5). Unfortunately, due to the condition of the skeletal remain, no information could be determined (Brown 2021).

In coordination with St. John's Church, the two skeletal remains were reinterred on site (Map 3).

Although the project area is confined and clearly has been subject to numerous excavations in the past (Images 6 - 7), there are material and architectural remains that date to at least the nineteenth century present throughout the project area (Image 8 - 10). Any future excavation work in this area should consider archaeological monitoring.



Map 1: USGS Map - (United States United States Geological Survey 2019).



Map 2: Project Area Map (OASIS 2020).



Image 1: Femur fragment recovered from nineteenth century backfill at 48 John Street.

DISINTERMENT PERMITDisinterment No. DS-2021-111Date 10/26/2021

(Month/Day/Year-yyyy)

An application having been filed with this Department as required by the Health Code, permission is hereby given
to Doris Amen of Jurek Park Slope Funeral Home, Inc.
(Funeral Director's Name/Supt. of Cemetery) (Funeral Establishment/Cemetery)

to disinter the remains of Archeological Remains 48 John Street Project

(Name of Deceased)

who died at 48 John Street NY, NY

on

now buried in NY NY

cremate*

48 John Street

(Month/Day/Year-yyyy)

Crematory*

NY NY

Cemetery and to reinter* them at

Crematory*

on or before 01/26/2022

(Month/Day/Year-yyyy)

(Borough, or City and State)

This permit must be handed to the Keeper of the Cemetery or
Crematory by the Funeral Director in charge of the funeral.

* Cross out one.



Per

BVS – Death Registration Unit

City Registrar

Stephen Van Nye

Image 2: Project Permit

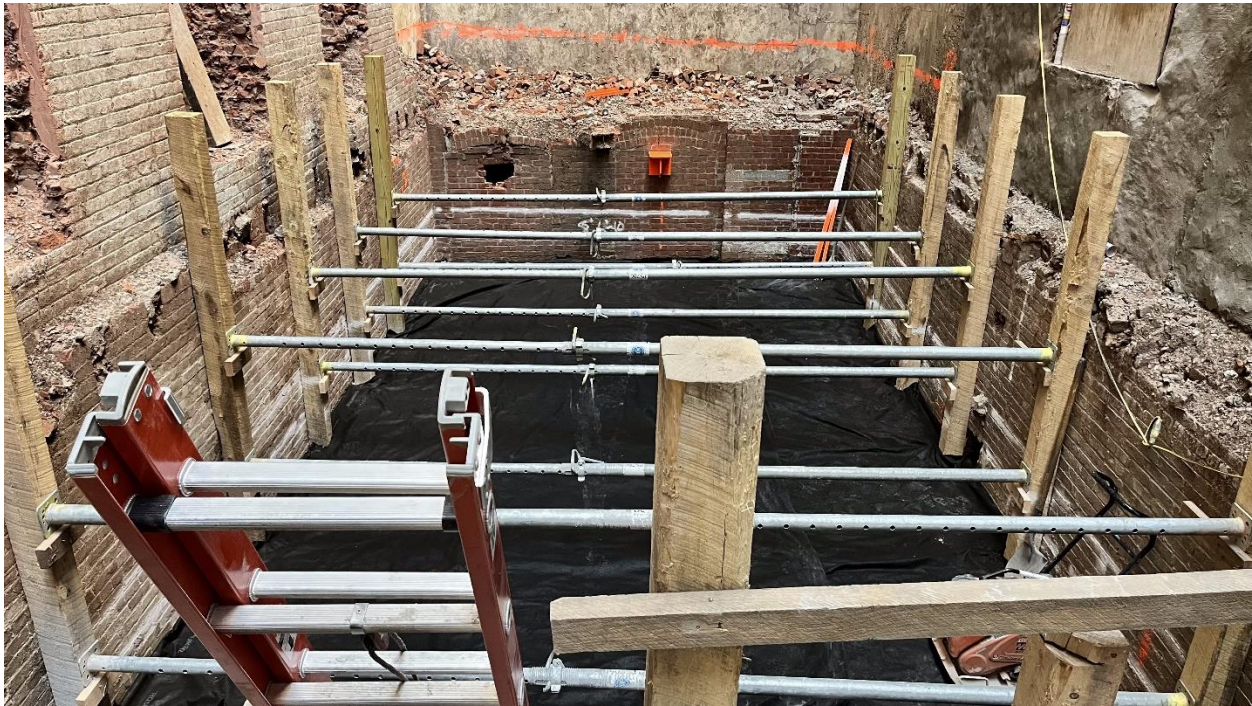


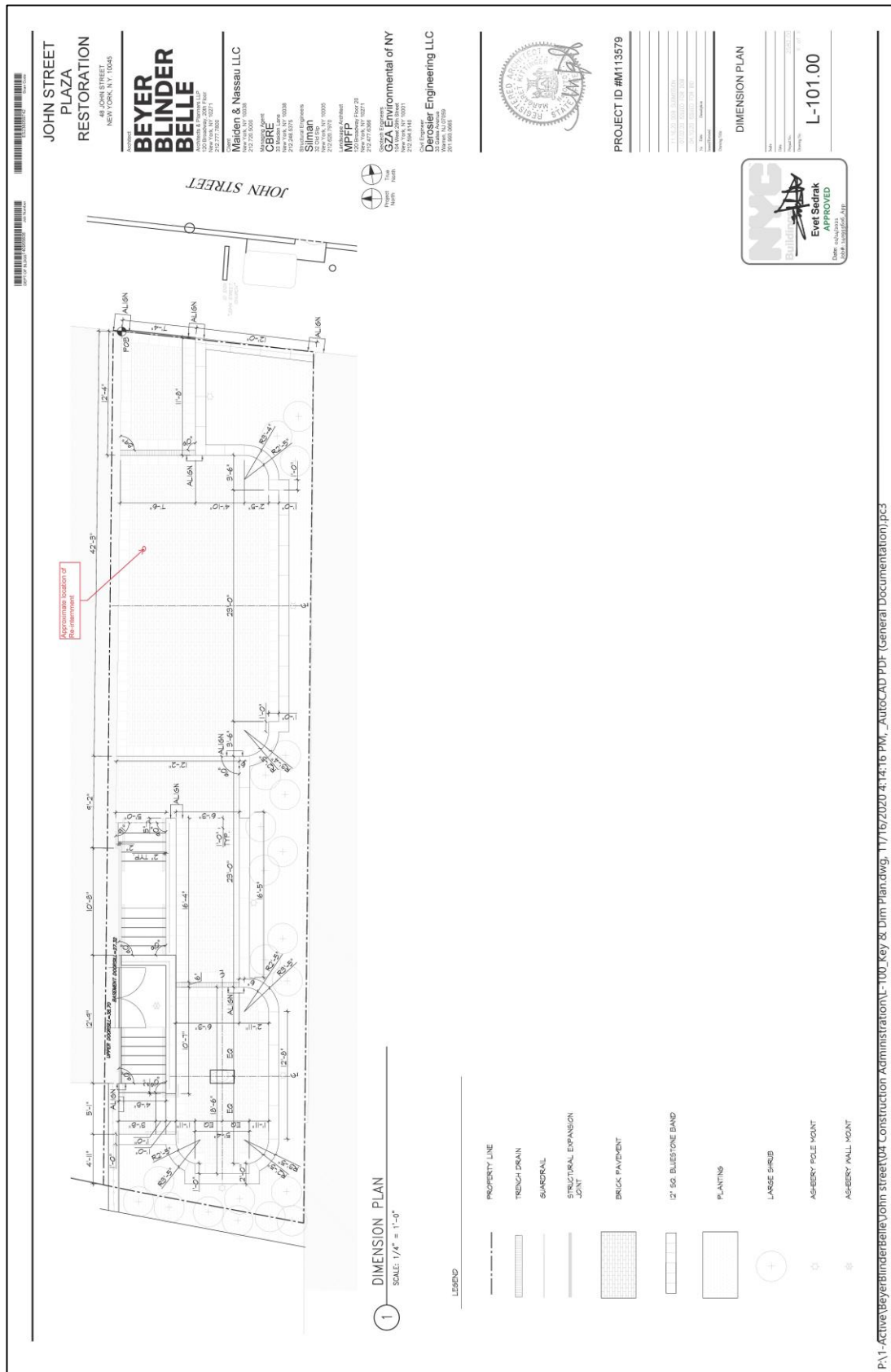
Image 3: Test Unit Excavation area showing extensive shoring required.



Image 4: Monitored excavation area.



Image 5: Human Remain recovered in October 2021.



Map 3: Project map showing the reinterment location for the human skeletal remains.



Image 6: Confined area of excavation.



Image 7: Confined area of excavation.



Image 8: "Blob-top" top bottle.



Image 9: Portion of a granite architectural frieze.



Image 10: Stone jug fragment.

Bibliography:

Brown, Matthew, Ph.D.

2021 Personal Communication.

City of New York – Landmarks Preservation Commission.

1991 John Street Methodist Church: An Archaeological Investigation. Prepared for:
John Street United Methodist Church.

2018 Guidelines for Archaeological Work in New York City. Report on file with the City
of New York – Landmarks Preservation Commission. New York, New York.

OASIS NYC

2021 Map of New York City. Center for Urban Research - The Graduate Center/CUNY.
<http://oasisnyc.net>

United States Geological Survey.

2019 Jersey City Quadrangle. New Jersey - New York 7.5 Minute Series.

URS Corporation with Allee King Rosen & Fleming, Inc.

2010 Mitigation Report Fulton Street Transit Center Project Unanticipated Discovery
of Brick Feature Beneath the Corbin Building 192 John Street New York, NY.