

USF 1207K
1003

CEGR

HISTORICAL PERSPECTIVES

NEW YORK CITY DEPARTMENT OF ENVIRONMENTAL PROTECTION

WATER QUALITY FACILITY PLAN

PAERDEGAT BASIN, BROOKLYN, NY

PHASE 1A ARCHAEOLOGICAL ASSESSMENT

92-051K

Prepared for: Allee King Rosen & Fleming, Inc.
117 East 29th Street
New York, NY 10016

Prepared by: Historical Perspectives, Inc.
P.O. Box 331
Riverside, CT 06878

Primary Authors: Betsy Kearns
Cece Kirkorian
Richard Schaefer

June, 1993

236

P.O. BOX 331 RIVERSIDE, CONNECTICUT 06878
(203) 661-0734

TABLE OF CONTENTS

I.	INTRODUCTION	1
II.	ENVIRONMENTAL SETTING	3
III.	PREHISTORIC ERA	4
IV.	HISTORICAL PERIOD	12
	Building History	18
V.	CONCLUSIONS AND RECOMMENDATIONS	21 23
VI.	BIBLIOGRAPHY	25

FIGURES

1993 SITE PHOTOGRAPHS

APPENDIX A

Correspondence with the New York State Museum and the
Division for Historic Preservation, New York State Office
of Parks, Recreation, and Historic Preservation

APPENDIX B

Soil Borings Data

LIST OF FIGURES

1. Project Site Location Map
2. Current U.S.G.S. Topographic Map - Coney Island and Brooklyn Quads
3. Grumet, Map of Native American Trails, Planting Areas and Habitation Sites with Indian Names of Local Origin
4. Solecki, Indian Village Sites
5. Vingboons, Manatus Map, 1639.
6. Hubbarde, Map of Western Long Island, 1666.
7. Walling, Topographical Map of Kings and Queens, 1859
8. F.W. Beers, Atlas of Long Island, 1873 (with additions by H. Stebbins Smith)
9. E. Robinson, Atlas of Kings County, 1890
10. U.S.G.S. Topographic Map, Brooklyn Quad, 1897
11. E. Belcher Hyde, Atlas of the Brooklyn Borough, 1899
12. Two Photographs of Paerdegat Creek, c.1900
13. Sanborn, Borough of Brooklyn, 1907
14. Sanborn, Borough of Brooklyn, 1950
15. Topographical Map for the Marginal P.C.P Storm Water Treatment Plant Paerdegat Basin, 1962
 - a. Northern section
 - b. Central section
 - c. Southern section
16. Sanborn, Borough of Brooklyn, 1977
 - a. Northern section
 - b. Southern section
17. REDI-Sanborn, Borough of Brooklyn, 1992.
18. Brooklyn Sewer Records Map

I. INTRODUCTION AND METHODOLOGY

The New York City Department of Environmental Protection (DEP) proposes to construct a water quality facility for combined sewer overflow storage at the head of Paerdegat Basin in the Flatlands section of Brooklyn, Kings County, New York. The proposed project is to be located on a roughly L-shaped site, which includes Block 8338, Lot 300 and part of Lot 1 (north of the line of Avenue K); Block 8012, part of Lot 400, as far east as a continuation of the Paerdegat Basin bulkhead line, drawn parallel with E. 76th Street; and the section of proposed Bergen Avenue between Avenue K and Ralph Avenue, from its center line to Lot 1 of Block 8338. The project site is bounded by Paerdegat Basin, the southern section of Block 8338 Lot 1, the western half of unbuilt Bergen Avenue, Ralph Avenue, Flatlands Avenue and the eastern portion of Block 8012 Lot 400. (See Figs. 1 and 2)

The proposed facilities include the extension of existing overflow sewers, the construction of two buildings along Ralph Avenue, a building for screening and pumpback equipment and odor control equipment, a 30-million gallon underground water retention facility and an underground Combined Sewer Overflow (CSO) facility which will extend under a large proportion of the proposed site. Bergen Avenue, which is currently mapped but not built, will be constructed to its center line along the border of the project site.

The purpose of the following Phase 1A study is to determine the presence, type, extent and potential sensitivity of any archaeological resources which may be present on the Paerdegat Basin Water Quality Facility Site. This report is based on archival research which documents the probability that the project lots hosted any prehistoric or historical resources, and their likely survival of post-depositional disturbances, which may have accompanied subsequent development. It also considers the potential for adverse impact by the proposed action.

In order to address these concerns, various sources of data were investigated. Primary source material on the project site was collected to determine the lots' original topography, and to compile a building history and disturbance record. Particularly helpful was a plate from the 1873 Beers Atlas of Long Island (Fig. 8), which gave valuable pre-development topographical information. This and other historical maps as well as descriptions and early photographs of the project area were provided by the Map and Local History Divisions of the New York Public Library and the Brooklyn

Historical Society. Local informants were sought and interviewed. Building and sewer records were researched in their respective departments at the Municipal Building in Brooklyn. Boring data for the project lots and the adjacent area were obtained from the Subsurface Exploration Section of the New York City Department of General Services. (See Appendix B)

To place the Paerdegat Basin site within an historical context, local and regional histories such as Stiles' History of Brooklyn and Thompson's History of Long Island were examined. An important source of data was Frederick Van Wyck's in-depth study of the early years of the Flatlands settlement, Keskachauge, or the First White Settlement on Long Island. William A. Ritchie's The Archaeology of New York State provided a valuable overview of Native American culture and lifeways during the prehistoric period. Other archaeological literature, available site reports and journal publications were researched for data specific to the project area, including Arthur C. Parker's "The Archaeological History of New York," William Beauchamp's Aboriginal Occupation of New York and Robert Grumet's Native American Place Names in New York City. Inquiries concerning inventoried prehistoric and historical sites were sent to the New York State Museum and the Division for Historic Preservation New York State Department of Parks and Recreation. (See Appendix A)

A site visit (5-26-93) and a photographic record of present conditions was made. (See Photos 1-12)

II. ENVIRONMENTAL SETTING

Long Island is the top of a Coastal Plain ridge formation that is covered with glacial drift, in reality an elevated sea bottom demonstrating low topographic relief and extensive marshy tracts. In the last million years, as glaciers advanced and receded three times, the surficial geology of the island, including the Paerdegat Basin Water Quality Facility Site was profoundly altered. "The glacier was an effective agent of erosion, altering the landscape wherever it passed. Tons of soil and stone were carried forward, carving and planing the land surface. At the margins of the ice sheet massive accumulations of glacial debris were deposited, forming a series of low hills or terminal moraines" (Eisenberg 1978:19). Circa 18,000 years ago, the last ice sheet reached its southern limit, creating the Harbor Hill moraine that traverses the length of Long Island. Before extensive alteration of the landscape during the nineteenth and twentieth centuries, a gently sloping plain extended south of the moraine to the series of tidal marshes draining into Jamaica Bay by a series of small creeks. (See Figs. 7 and 10)

One of these, Paerdegat or Bedford's Creek, wound a meandering course through the project site. The marsh around it was regularly inundated by high tides, rendering it impassable. During the 19th and 20th centuries, sections of the marsh were filled in, in preparation for the development of Jamaica Bay as a major port, which never occurred. The lower reaches of the creek were widened, regularized and dredged during the early 20th century, to form the present Paerdegat Basin, a polygonal slip for mooring small boats and barges. The filled sections of the project site presently range in elevation from 7.7' to approximately 18' in the southwest corner near Avenue K. Along the western shore of the basin, is an irregularly-shaped bank which slopes down to between +2' and +3'. Beyond this bank, the project site is either underwater or marshland daily inundated by the tide. Here the elevations range between -3.0' and -12.1'. (See Figs. 15a, 15b and 15c)

III. PREHISTORIC ERA

The prehistoric era on the south shore of western Long Island can be divided into three time periods, based on prehistoric man's adaptations to changing environmental conditions. These are generally known as the Paleo-Indian (c.12,000 to 10,000 years ago), the Archaic (c.10,000 to 2,700 years ago) and the Woodland (c.2,700 to 400 years ago). In order to be able to assess the project site's potential for prehistoric exploitation, it is first necessary to review these time periods and their associated settlement patterns.

Paleo-Indian Period (c.12,000 y.a. - 10,000 y.a.)

Toward the end of the Wisconsin Glaciation, during the Late Pleistocene Epoch, the first humans wandered across the exposed land bridge which connected Siberia and Alaska. These small groups of hunters were probably following the roaming herds of megafauna which were their chief prey. The distinctive weapon in their chipped stone tool kit was the fluted point, which has been found in association with mammoth, mastodon, bison and horse remains at various sites in the southwestern United States. Although none of these "kill sites" is located east of the Mississippi, the discovery of campsites such as that at Port Mobil, Staten Island, suggest a scattered, highly mobile population in bands of approximately 20 individuals, who ranged across a vast area necessary to support lifeways organized around the hunting of migratory game (Ritchie 1980:1-3, 13). In the Northeast, the glacially lowered sea level exposed a broad coastal plain of which Long Island was a part. "This large area apparently contained abundant big game resources and provided access along the entire length of the south shore to the area that is present day Long Island" (Saxon 1978:251).

The fluted, lanceolate points, two to five inches in length with channelled or fluted faces, presumably to facilitate hafting, exhibit a considerable range in shape and size. They were usually made from a high-grade silicious stone, often exotic to the region in which they are recovered, a function of their makers' seasonal migrations. Other artifacts in the Paleo-Indian tool kit include scrapers, knives, borers and gravers, tools which indicate extensive handiwork in wood, bone and leather (Ritchie 1980:3,6).

From the locations of recorded sites in the Northeast, Paleo-Indians exhibited a marked preference for well-elevated situations. However, 30% of sites were found on or near the margins of swampy

ground. Environmental characteristics which appear to have been attractive to Paleo-Indians include the proximity of major waterways, large fertile valleys and the coastal plain, where the densest population of desired food animals was supported (Ritchie 1980:7). However, since 10,000 years ago, the rise in sea level estimated to be from 75 to 80 feet, has submerged large numbers of these sites.

The retreat of ice from Long Island approximately 18,000 years ago and a global warming trend circa 14,000 years before present, encouraged Paleo-Indian settlement in the Northeast. The post-glacial environment of spruce and pine underwent a gradual modification in favor of deciduous hardwoods such as oak and hickory, which have greater importance in terms of nutritional value to both animals and humans than do conifers. By 8,000 B.C., these deciduous species dominated forests along the eastern seaboard. In addition, the megafauna on which Paleo-Indian diet was based "were rapidly becoming extinct, and were being replaced by the temperate-climate fauna that are indigenous today" (Gwynne 1982:190-191).

Archaic Period (c.10,000 y.a. - 2,700 y.a.)

The warming trend at the end of the last glaciation completely transformed the northeastern coastal environment from tundra and conifer-dominated forests, to the present deciduous woodlands with generally modern distributions of fauna. Due to the dwindling contribution of meltwater from disappearing glaciers, the reduced flow of streams and rivers promoted the formation of swamps and mudflats. These wetlands, like the one which once covered the project area, created a congenial environment for migratory waterfowl, and a host of edible plant species and shellfish. The new mixed hardwood forests of oak, hickory, chestnut, beech and elm attracted such mast-eating fauna as white-tailed deer, wild turkey, moose and beaver.

Although the Archaic diet was still based on hunting and gathering, due to the greater variety of plants available and exploited, excavated Archaic sites yield a wide array of plant processing tools, including grinding stones, mortars and pestles. The diagnostic tool was the grooved axe. In the coastal areas of New York, have been found numerous, small "nearly always multi-component sites variously situated on tidal inlets, coves and bays, particularly at the heads of the latter, and on fresh-water ponds on Long Island" (Ritchie 1980:143). By the Late Archaic, these

areas provided shellfish, small game, fish, salt hay and tuberous grasses making larger more permanent settlements possible. Semi-nomadic life is still indicated, but wandering occurred within well-defined territorial limits, with seasonal movements between camps near exploitable resources. A dietary shift to shellfish in coastal New York near the end of the Archaic suggests a scarcity of large game, and a change from the early Archaic inland adaptation of forest hunting. Coastal sites show a principal reliance upon shellfish, especially oysters, hard and soft shell clams and bay scallops, which were easily gathered all around Long Island.

Characteristic of the Late Archaic were "fish-tailed" projectile points and soapstone bowls (Ritchie 1980:142,166, 167, 171). In contrast to conditions during the Paleo-Indian, Early and Middle Archaic, "by Late Archaic times sea level was so close to present levels that its subsequent small rise has failed to obliterate much of what remains on Long Island from that period" (Gwynne 1982:192). Hence the Late Archaic Wading River complex, four sites on the north shore of Suffolk County, was found at the edge of a salt marsh, on dry ground ranging only two to seven feet above mean high water (Wyatt 1982:71).

Woodland Period (c.2,700 y.a. - 400 y.a.)

Pottery use became widespread following the use of soapstone vessels in the Late Archaic, and although copper tools were utilized during that period, the earliest copper ornaments, tubular beads, made their appearance during the Woodland. Stone or clay smoking pipes were also an Early Woodland innovation (Ritchie 1980:179-180).

Settlement patterns were substantially altered with the introduction of agriculture, the systematic cultivation of maize, beans and squash possibly beginning as early as 1000 A.D. During this time large villages within palisaded enclosures developed for the use of a semi-sedentary people, with groups moving seasonally, depending on exploitable food resources, between villages and camps of varying population concentrations. Preferred village/camp sites were in protected, elevated locations at the confluence of two water systems. "Nearly all the permanent sites are situated on tidal streams and bays on the second rise of ground above water." Despite the advent of agriculture, shellfish and small game remained an important component of the Woodland diet. Shellfish refuse heaps, termed "middens," reached immense proportions, covering from one to over three acres. Deer, turkey, raccoon,

muskrat, ducks and other game were stalked with bow and arrows, replacing the spear and javelin, while dug-out boats, bone hooks, harpoons and nets with pebble sinkers were employed in fishing (Smith 1950:101; Ritchie 1980:180,267).

The project site was part of the tidal estuary of Paerdegat Creek, which wound its way to Jamaica Bay through the parcel. The stream and marsh would have provided a resource-rich environment for Native American exploitation, with an abundance of fish, small mammals, waterfowl and also edible and useful reeds and shrubs. The stream was a ready source of fresh water, as well as providing water transportation routes. As outlined in the preceding section, Woodland Indians preferred well-drained, elevated sites near a large-scale marsh biome. Although the project site provided a tempting natural resource, according to 19th-century maps, there were no dry loci providing sites for temporary camps or lithic processing areas (See Figs. 8 and 10).

Archaeologists rely not only on past environmental components to assess site potential, but also on tales of "Indian relics," ethnographic accounts and published archaeological reports. At the time of the first European contact with Native Americans, the western end of Long Island is generally believed to have been inhabited by Munsee-speaking Canarsee Indians, members of the Delaware culture group. Historical narratives written by European travellers and settlers provide us with eyewitness descriptions of Indian customs and lifeways during the 17th century. Johannes de Laet, in his New World, or Description of West India, published in Holland in 1625 observed of the Canarsees:

They were clothed in the skins of elk, foxes and other animals. Their canoes were made out of the bodies of trees; their arms were bows and arrows, and the arrows had sharp points of stone fastened to them with hard pitch (Thompson 1918:93-94).

Some lead a wandering life, others live in bark houses, their furniture mainly mats and wooden dishes, stone hatchets, and stone pipes for smoking tobacco (Bolton 1972:16).

Contact with Europeans had far-reaching effects on Native American cultures. European goods such as metal and glass began to replace traditional materials, while warfare and European-introduced diseases against which the Indians had little protection

decimated the population in the New York City area. This caused many groups to merge and remerge in complex ways in order to maintain viable communities. In 1670, Daniel Denton observed that the six towns on western Long Island had been reduced to two small villages (Thompson 1918:103). When the Canarsee are last mentioned in 1684 they are joined with the Rockaway and Massapequa groups. Although the Massapequa eventually moved further west on Long Island, many Canarsee lingered on at the fringes of European settlements until well into the 19th century (Grumet 1981:6-7).

Twentieth century research by Robert S. Grumet, Reginald Bolton and others into Indian toponyms, or place names, has revealed a strong Native American presence in the vicinity of the project area. One toponym is variously recorded as Keskachane (misread as Keskachauge - See Van Wyck 1924), Keskaechquerem and Keshaechquereren. The first of these appears on the 1639 Manatus Map, near the Flatlands settlement, with the legend, "In this sort of house live the wild [men?] Keskachane." A small drawing of a Canarsee longhouse, complete with curved roof was included. (See Fig. 5) Grumet's research suggests that Keskachane may have been the "council fire" or principal settlement of the Canarsee, but that the inhabitants may have been forced to abandon the area during the warfare of the early 1640s (Grumet 1981:18-19). Flatlands historians have long identified the site of Keskachane as the grounds of the Flatlands Dutch Reformed Church and graveyard (at Kings Highway and Overbaugh Place, approximately 1.2 miles from the project parcel) (Van Wyck 1924:106-107; Ross 1903:313), and Bolton mentions the presence of an Indian burying-ground there (Bolton 1972:104). However, "No relics will be found here as all traces, save possibly a few shells have been obliterated" (O'Halloran 1950:64). This Canarsee settlement also lay at the intersection of two Indian paths. One of these, which became the route of present Kings Highway, passed about 2,000 feet northwest of the project site. This trail which connected Keskachane with other locations and Native American settlements to the east and west. The other path led north to the East River as well as south to Jamaica Bay. (See Fig. 3) A section of this road can also be seen on the 1873 map (Fig. 8), crossing the marshes to the shore of Bergen's Island, now known as Bergen Beach.

The Canarsee's maize fields, called as Castuteeuw (where grass is cut or mowed) were associated with the settlement, and have been identified as the three "flats" in the present Flatlands-Canarsie neighborhoods. The westernmost flat, the land of the original

European patent, was called Achtervelt by the Dutch, and begins approximately one mile southwest of the project site marsh. (See Fig. 3 and compare Fig. 8) The other two begin about a mile east of the project lots in present Canarsie (Grumet 1981:7; Van Wyck 1924:15; Ross 1903 I:310).

Bergen's Island, known to the Canarsee as **Wimbaco** (a fine water place) or **Winnippague** (Grumet 1981:63), lies approximately one mile south of the project site, and has been identified as one of Long Island's largest centers of wampum production. Wampum, or sewan, were tiny (about 1/3" long) purple or white beads, the purple made from the shell of the quahog, or hard-shelled clam (*Mercenaria mercenaria*) and the white from the columella of the whelk (*Busycon* sp.). Since the purple beads could only be made from a small part of the clam shell, they were more highly prized. As John Josselyn wrote in 1633:

there are two sorts, blue and white; the first is their gold and the latter their silver. These they work out of certain shells . . . They drill and string them to adorn the persons of their sagamores and principal men and young women . . . (Thompson 1918:113-114)

Presumably, wampum was manufactured by women, who cut, polished and bored the beads without the use of metal tools. Originally the beads were strung on sinew into belts and necklaces and exchanged between Indian groups as a show of good faith and friendship on important occasions. With the arrival of Europeans and the perennial lack of specie which plagued all of the American colonies, during the 17th century wampum was adopted by both the English and the Dutch as legal tender, and various colonial governors published rates of exchange between the beads and European currencies. Wampum was also highly prized by the Iroquois of upstate New York, and its manufacture became a valuable industry for the Canarsee (Ibid.:116; Bolton 1972:100,102; Van Wyck 1924:108).

The wampum making center on Bergen Island, with its huge shell midden or refuse heap has been noted by many historians and archaeologists (Thompson 1918:124; Beauchamp 1978:79; Parker 1920:582; Stiles 1884:65). Bolton notes that there "are extensive shell beds on this island, and stone implements have been found there" (Bolton 1972:52). During the building of the Belt Parkway through the Bergen Beach area in the 1930s, archaeologist Ralph Solecki investigated the shell middens disturbed by the

construction. (See Fig. 4) In 1950, another source describes the island as "about the only site left in the entire county where relics are still obtainable" (O'Halloran 1950:63). Other historians record the fact that Flatlands and its inhabitants mined the Bergen shell midden for fertilizer and road-building material as late as the 20th century (Van Wyck 1924:120; Thompson 1918:142).

Flatlands historian Frederick Van Wyck suggests that the wampum industry was centered on Bergen Island because of its easy defensibility. It was surrounded by water and swamp, and the elevated center of the island provided an excellent lookout. (See Fig. 8) The only land approach was past the Keskachane settlement, and the Canarsee men could form a line of defense across the flat, and place their women and children on the island (Van Wyck 1924:106-107). This scenario agrees with Daniel Denton's observation in 1670:

In their wars they fight no pichtfields, but when they have notice of an enemie's approach, they endeavor to secure their wives and children upon some island, or in some thick swamp, and then with their guns and hatchets they way-lay their enemies . . . (Thompson 1918:105-105).

Another toponym, this time about a half mile to the north of the project site, was Muskyttehool or Moshkeeto Hole (place of rushes), a location, possibly a boundary at the intersection of the east-west Indian trail, now Kings Highway, and Paerdegat Creek (Grumet 1981:36-37; Bolton 1972:145). It may be significant that north of Moshkeeto Hole, the marsh is fresh water, and to the south, salt. (See Figs. 3, 8 and 12)

When the Canarsee abandoned their settlement at Keskachane during the 1640s, a large village site with an extensive planting field, also existed in the present Canarsie neighborhood, centered on East 92nd Street from Canarsie Beach Park to Avenue J (Bolton 1972:146). (See Fig. 3). This settlement area was on the second area of elevated ground east of Paerdegat Creek, once called Vischer's Hook or Canarsie Point (See Fig. 8), about a mile northeast of the project site. On the 1666 Hubbarde Map this area is labelled "Conarise Indian Field." (See Fig. 6) Immense piles of shells have also been observed in Canarsie (Thompson 1918:124), and it is probable that wampum manufacture was associated with the Canarsie village as well.

A file search and sensitivity rating by the New York State Museum and the Division for Historic Preservation New York State Parks and Recreation (NYSPR), has identified four prehistoric sites, referred to by New York State Museum inventory numbers (NYSM#), within a one-mile radius of the proposed Paerdegat Basin Water Quality Facility Site. (See Appendix A) Two of these sites have been discussed above. NYSM#7391 (A.C. Parker Kings#3B)¹ refers to the "immense shell heaps" at Bergen Island, and NYSM#7390 (A.C. Parker Kings#3A) to the ones in Canarsie which were a center of Canarsee wampum manufacture. A Native American campsite, NYSM#3610 (no Parker #), was identified in Canarsie, within the area already identified as the Canarsee shell midden, planting fields and settlement. The fourth site identified, a Woodland Period shell midden and burials (NYSM 3608, A.C. Parker Kings#4), is not in Flatlands, but "on Avenue U, and near Ryder's pond and Sheepshead Bay" (Parker 1920:582). Avenue U in the Sheepshead Bay section of Brooklyn is approximately 3 miles southwest of the project lots. The NYSPR also identifies the Canarsee settlement in present Canarsie, which was discussed above. The museum's sensitivity rating, "HIGH PROBABILITY OF PRODUCING PREHISTORIC ARCHAEOLOGICAL DATA" is based on the presence of the above listed prehistoric sites in the vicinity of the project site, and the possibility that submerged prehistoric deposits may be intact beneath a layer of fill.

There is strong evidence of a Native American presence in the areas on all sides of the project site, as evidenced by the series of toponyms, and the siting of two Indian villages and shell middens within approximately 1.2 miles of the project site. However, based on topographical factors, the daily tidal inundation of the swampy Paerdegat Basin Site would not have presented an attractive environment for prehistoric Americans. The documentary and cartographic evidence is supported by the data from borings done on and around the project site. These show a thick layer of fill over the prehistoric and early historical surface, with the water table extending up into the fill layer. (See Appendix B) Although the rich resources of the creek and salt marsh environment, as described in the preceding pages, would have been exploited by Native Americans, the nearby presence of abundant level, dry ground in close proximity to these resources would have

¹These numbers refer to site descriptions in Arthur C. Parker's 1920 work "The Archaeological History of New York" (Parker 1920:471-743).

precluded the project site's use as a camp site and even a shellfish harvesting or lithic processing center. It is no coincidence that the major Canarsee centers were located on the dry, elevated flats where the European settlements of Canarsie and Flatlands first developed. Although the shell middens of Bergen Island are located in an area that was marshy, Bergen Island provided adjacent elevated ground for habitation and processing sites. The project area's salt marsh would have provided many resources to Native Americans, but oysters, clams, scallops, mussels and whelk were not among them. The collection of these saltwater bi- and uni-valves would have required a journey to the shores of Jamaica Bay, where their environmental requirements, such as still water, a large flat breeding and living area, and salt content, etc. were met. It is unlikely that prehistoric Americans would have transported their shellfish over one mile from Jamaica Bay to process them in a third, swampy location, before returning to their settlements. It is also unlikely that a shell midden, which might be several feet thick and range in size from one to three acres, has gone unnoticed over the centuries. In addition, no trace of the existence of even a small shell midden is evident in the borings done in and around the project lots. (See Appendix B)

The project site's potential for hosting prehistoric archaeological resources along with the available evidence showing the extent and impact of subsequent subsurface disturbance will be discussed further at the end of the Historical Period section (IV) and in Conclusions and Recommendations (Section V).

IV. HISTORICAL PERIOD

The 17th and 18th Centuries

The first recorded European landowners of the project area were Andries Hudde and his partner Wolfert Gerritsen,² who in 1636 purchased, under questionable legal circumstances, about 3,600 acres in the project area from two "chiefs," Penhawitz and Kakapeteyno, and their party of seven Indians. Apparently the meadowlands and the project site were included in the grant along with the high ground west of the marsh. Hudde was a member of Governor-General Wouter van Twiller's council, and seems to have used his political clout to secure illegal ownership of the desirable lands. In 1630 Gerritsen became the overseer of farms for the private colony or patroonship of Rennselaerswyck (Van Wyck 1924:15-16; Brodhead 1853:201,223,265).

The existence of several European place names in the study area suggests that undocumented and unauthorized settlement preceded this land grant. Most notable and relevant of these toponyms is Bestavaer's Kill, which is the early name for the Paerdegat outlet which ran through the study site (Van Wyck 1924:18). (See Fig. 6, where the Dutch name is transcribed as something akin to Bessdfatheres, a surname.) Brooklyn historian Henry Stiles wrote that "some rude settlement was probably formed here [Flatlands] as early as 1624" (Stiles 1884:65).

Hudde and Gerritsen's property was called Achtervelt (Dutch: beyond the plains), because as one approached it from New Amsterdam one had to pass through a prairie-like area (Stiles 1884:65). Apparently the partners hired someone else to begin farming their lands, because a 1638 inventory of their property describes the house of Teunis G. Bergen, a barn and a "bergh" - a peaked roof on posts for keeping hay dry. The roof could be raised or lowered as the haystack grew or diminished. These wooden buildings, approximately 1.2 miles west of the project site were surrounded by a protective palisade (Ostrander 1894:54). About 33 acres had been sown with "summer and winter grain" and a garden had been planted

²Many Dutch employed patronymic surnames throughout the 17th century. Wolfert's father's given name was Gerrit, and by custom his son's "last name" would have been Gerritsen. Gerritsen's descendants eventually adopted the surname Kouwenhoven.

with fruit trees. Along with cattle, horses and farming implements, a yawl was listed, which could have been used to navigate through the project site (Van Wyck 1924:85). The 1639 "Manatus Map" shows "2 plantations and 2 farms of Wolfert Geritsz. and 2 of his partner."³ Three buildings are identifiable, two of which have an attached bergh, and are probably barns or combination barn/dwellings, and the third could be a dwelling. (See Fig. 5) These structures, approximately 1.2 miles west of the study parcel, became the center of a settlement called Nieuw Amersfoort, named for the Amersfoort near Utrecht where Gerritsen was born (Ibid.:15). Hudde was never a resident, and sold his interest to Gerritsen in 1647 (Ibid.:15,84). By the time the Hubbarde Map was drawn in 1666, the village had at least 22 structures (See Fig. 6), including the octagonal Dutch church which was completed in 1663 to house the congregation founded in 1654. The church was rebuilt on the same site in 1794 and 1848 (Stiles 1884:73), and still stands 1.2 miles west of the project site, at 3931 Kings Highway, between present Flatbush Avenue and East 40th Street. (See Photos 11 and 12) A school was also established, first mentioned when it was already fully-functioning in 1675. In circa 1694 the schoolhouse stood in what was and continues to be the burial ground of the church (Ibid.:75).

Until the 20th century, the project site and its surrounding area were salt meadow and creek bed. However, during the 17th and 18th centuries, this meadowland was considered very valuable. The harvested salt grasses were an important source of much-needed feed for domestic animals. The creeks were important for fishing and transportation. As visitors to Flatlands commented in 1679:

There is toward the sea, a large piece of low flat land which is overflown at every tide, like the schorr [marsh] with us, miry and muddy at the bottom, and which produces a species of hard salt grass or reed grass. Such a place they call valey and mow it for hay, which cattle⁴ would rather eat than fresh hay or grass. It is so hard they cannot mow it with a common scythe, like ours, but must have the English scythe for the purpose.

³A plantation was an unestablished but developing farm.

⁴"Cattle" refers to livestock, rather than simply bovines.

All the land from the bay to 't Vlacke Bos [Flatbush] is low and level, without the least elevation.

There is also a tract which is somewhat large, of a kind of heath, on which sheep could graze . . . This meadow, like all the others, is well provided with good creeks which are navigable and very serviceable for fisheries. (Van Wyck 1924:183; Dankers and Sluyter 1966:131).

Existing historical maps do not make any distinction between these two types of meadowland. Although the 1666 map shows a road connecting Flatlands with the adjacent village of Flatbush to the north (See Fig. 6), a path along the western shore of Paerdegat Creek was probably the only route to the east, until the King's Highway was built in 1704. The creek, now a basin, got its name because it drained a small pond, the Paerdegat. In Dutch, Paerdegat means horse hole, possibly a watering place for animals. Flatlands historian Frederick Van Wyck translated the term as horse gate, referring to the road along the creek, which became a bone of contention when Flatbush obstructed the path by fencing the surrounding lands during the 17th century (Van Wyck 1924:73-73). As noted above, the creek was also called Bestevaer's Kill, and later, Bedford Creek, since it began in Flatbush, for a time called Bedford. (See Fig. 8)

Flatlands underwent very little disturbance from the English conquest of New Netherland (1664). The English presence may have hastened the displacement of the settlement's Dutch name with the topographically descriptive term, Flatlands. The first English governor, Richard Nicholls, provided the town of "Amersfoort, alias Flatlands" with a charter, although Flatlands historians, jealous of the antiquity of their settlement, point out that the document recognized the existence of the town and did not create a new municipality. In 1667, Nicholls also confirmed the ownership of the Hudde/Gerritsen patent to Elbert Elbertsen Stoothoff, who had married the widow of Wolfert Gerritsen van Kouwenhoven's eldest son (Van Wyck 1924:16; Ross 1903:310,311). Stoothoff was required to raise and educate his Kouwenhoven stepchildren (Stiles 1888:66), who must certainly have inherited shares of their family's original estate, given the presence of Kouwenhoven landowners in the project area until at least 1899. (See Figs. 8 and 11)

The reason for the lack of disruption during the change of government was for the simple reason that the Flatlands settlers were farmers and artisans, not merchants with extensive trading contacts. They did prosper, and expanded their farmlands by

acquiring the property on the east side of Paerdegat Creek in 1665. This area, called Varkin's Hook (Pig's Point), was a finger of elevated land between the Paerdegat swamp and the swamp around the European Canarsie settlement (See Figs. 6, 8 and 10). By 1683 there were 1,683 acres under cultivation in the town, and in 1698 the population of Flatlands was 256. The farm work was accomplished with the toil of 40 African slaves. Slave ownership was common among the 17th-century Dutch settlers. Of 37 families in Flatlands in 1698, 20 owned at least one slave, and the largest number in any family was five (Stiles 1884:68-69).

During the American Revolution, British and Hessian troops passed through the settlement in August of 1776, plundering most houses of foodstuffs. However, no troops were quartered there, and only a single guard was left in the town until the end of the war (Stiles 1884:70,72,73). Church services and school classes continued without interruption throughout the British 'occupation' (Ostrander 1918 II:33).

Several houses dating from the 17th and 18th centuries have survived until the present in the vicinity of the project area, of which the closest and most notable is the Pieter Claesen Wyckoff House, built c.1641, which may be the oldest building in New York City (Willensky and White 19:715-716) (Clarendon Road and Ralph Avenue, about 0.9 miles north of the study parcel #4 on map in Appendix A). A file search conducted by the New York State Historic Trust Office of Parks and Recreation has identified six additional historical house sites, all approximately one mile away from the study lots. These file search results are included in Appendix A. The Van Wicklen Cottage and Mill Site (A047-01-0123, #5 on map), is incorrectly placed at the "Along Paerdegat Basin (near foot of former Crescent Street)." The Van Wicklen site is on Spring Creek in the adjacent town of New Lots, near the foot of present Crescent Street, approximately 3 miles to the northeast (Kearns, Kirkorian and Schaefer 1988:16-17,19-20).

The 19th and 20th Centuries

Flatlands retained its agricultural character throughout the 19th century, and during this period the salt meadows of the project area remained relatively unaffected. However there is a discernable change in perspective toward the marshes by the 19th century:

Along the shore of Jamaica bay is an extensive salt marsh, which yields an abundance of hay of an inferior quality. With the exception of this marsh, there are no wastelands, the whole being divided into well cultivated and productive farms (Bailey 1840:34).

The marsh had become wasteland, and obviously the salt grasses had been replaced as a source of animal fodder. Still, unlike other areas of Kings County, the population of Flatlands was not expanding so rapidly that landowners felt it was necessary or profitable to fill in the meadows. When the 1859 and 1873 maps are compared, there is no significant change in the extent of the project area marshes. (See Figs. 7 and 8) The isolation of Flatlands is also exhibited in the still strong Dutch cultural presence c.1840. Many residents of the town still employed the Dutch language in their private conversations (Bailey 1840:36).

The first construction episode adjacent to the project site was the building of present Flatlands Avenue, which occurred by 1873 (See Fig. 8), forming the northern boundary of the project site. By the last decade of the 19th century, an ambitious street grid had been mapped out on the study lots, including Ralph Avenue and Avenue K. Paerdegat Avenue was also planned to run through the project site, along the western shore of the proposed Paerdegat Basin, which was not dredged until well into the 20th century. Early attempts to 'reclaim' the marshlands are evident in the presence of a drainage ditch to Paerdegat Creek which was dug by 1899, and the construction of a road to provide access to the ditch. (See Fig. 9)

In 1899 the project site was divided between the Ditmas estate, Peter G. Kouwenhoven and the Brooklyn Development Co., which had acquired the property directly east of the creek from the heirs of C. B. Kouwenhoven. (See Fig. 11) That a development company should be interested in these lands was the first sign of the impending destruction of the salt marsh environment. This was certainly encouraged by the growth brought to Flatlands by its absorption into Brooklyn in 1896, and of Kings County by New York City just two years later (Thompson 1918:146). The expanding population of Kings County required more efficient methods of eliminating its liquid and solid wastes, and the now useless marshes along the shore of Jamaica Bay were a convenient outlet for sewage. By 1907 a sewage outlet, complete with watchman's house had been constructed adjacent to the project site, at the intersection of Ralph and Flatlands Avenues, astride Paerdegat

Creek. It discharged wastes directly into the little stream, and therefore into the wetlands. (See Fig. 13) A certain amount of filling must have been done prior to its construction, since that area was previously swamp. The structure was replaced by 1933, when a 2-story sewage pumping station, near the corner of Flatlands and Ralph Avenues (Block 8338 Lot 300) was erected. The pumping station was the first building on the project site, and is still in use today. (See Fig. 17) Another addition in the vicinity of the project site was an incinerator built in 1929. The "Brooklyn Ash Removal Co. Inc." complex was located on the block bounded by Flatlands Avenue, Avenue J, East 57th and 58th Streets, about 750 feet west of the project site. It was closed by the Department of Sanitation in a budget tightening effort in 1958 (Newton 1958). A Department of Transportation Bureau of Highways garage facility was built c. 1940 along Flatlands Avenue just east of the project site.

The atmosphere created by these facilities was not conducive to residential development in the vicinity. During the 1930s the Bergen Beach area to the south was the home to "pathetic communities of squatters, who live in makeshift houses, and eke out a living by fishing and scouring the near-by city dumps for odd necessities" (WPA 1939:502). Squatters were still present in the 1950s, when a small group of families were discovered living along Paerdegat Basin approximately 4,000 feet south of the project site, between Avenues U and V. One of the soon-to-be-evicted squatters claimed to have lived in his one-room frame shack for 20 years (New York World-Tribune 1956).

The transformation of Paerdegat Creek into Paerdegat Basin was part of a grandiose design for the development of Jamaica Bay as a deep water port, which had been proposed as early as 1890. (See Fig. 9) All the marshes were to be filled in with incinerator ash and refuse, and a series of basins were to be created to provide bulkhead and dock space. Many of the project area borings, especially borings 1 and 2, show large amounts of cinders in the fill. (See Appendix B) Although work on the basins was begun in 1912, a 1924 aerial photograph shows the creek intact (City of New York 1924:23a). By the last dredging episode in 1932 the first 2,000 feet of Paerdegat Basin at the bulkhead end had been dredged to 16 feet below mean low water, creating a channel 450 feet wide and 6,675 feet long (Hazen and Sawyer 1991:21-23), more than twice as wide as the 200-foot-wide basin shown in the 19th-century maps. (See Figs 9 and 11) It is not clear whether the dredged material was also piled in the project area to form the dry, elevated areas

that presently exist on the project site. Apparently, the shores of the basin were never adequately filled, or the bulkheads have deteriorated greatly because sections of Block 8338 Lot 1 are still below the mean high water level, which is not noted in the insurance maps (Compare Figs. 15b, 15c and Fig. 17) Through the present, the deserted shores of the basin have been plagued by illegal dumping, and the whole Bay waterfront marred by the sewage odors emanating from the polluted water. Attempts at housing development directly east of the basin in Canarsie have been hampered because many of the structures began sinking into the formerly swampy ground. As a result, many apparently sound homes remain unsold (Connie Kaplan, personal communication, 5-27-93).

Between 1950 and the present, the project site section of Block 8338 Lot 1 was being utilized to store "Used Lumber," and boats, as well as hosting several structures, used for nursery sales and boat repair and sales. Two trailers are also present on Lot 1, on a dirt road running east from Ralph Avenue. They are used as the "City of New York Department of Transportation Bureau of Highway Operations Resident Engineers Office." During the 1960s there was a golf driving range on Lot 1, east of the intersection of Bergen Avenue and Avenue K. (See Figs. 16a and 16b) The other sections of the project site are still occupied by the Sewage pumping station, its parking and storage.

Building History

This building history of the Paerdegat Basin Water Quality Facility Site is based on historical maps and atlases, as well as on Brooklyn Sewer Records. Unfortunately, all relevant Building Department records for Block 8338, Lots 1 and 300 and Block 8012 Lot 400 have been either lost or destroyed. It should be remembered that only the section of Lot 1 north of Avenue K, and the section of Lot 400 bounded by Paerdegat Basin, Flatlands Avenue, Block 8338 and the property around the Bureau of Highways garage is included in the study parcel.

Block 8338 Lot 1 (Bounded by Bergen Avenue, Paerdegat Basin, Ralph Avenue and Flatlands Avenue, and Lot 300)

The construction of a drainage ditch across the project site and a short road to the ditch are the only recorded pre-filling construction episodes. (See Fig. 11)

No structures are recorded on this lot until 1950, when a three-sided shed appears, related to the used lumber storage that still occupies the part of the northern section of this lot. This shed was no longer present in 1962, but the used lumber yard was still in existence. (See Figs. 14 and 15a) At that time four structures appear along the lumberyard's Ralph Avenue frontage: a wooden shed, two sheet metal buildings which were probably sheds, and a 1-story L-shaped, concrete, corrugated metal, and shingled structure (which still stands, although it does not appear on the 1992 map - see Fig. 17). The sign on the building reads, "M. Grossman Lumber Co."

By 1962, the lot was being utilized for a variety of activities. Along Ralph Avenue, adjacent to the lumberyard on the north, a plant nursery was active. The nursery maintained two large hot houses, with the southern one connected to a 1-story clapboard building. Open-air earth and gravel storage were to the south of this structure, near the lumberyard, and north of the same building, on a "concrete slab." (See Fig 15a) Although these buildings do not appear on the maps after 1977, (See Figs. 16a and 17) part of the complex still stands on the project site, partially obscured by the dense growth. As of 1990, the leaseholder for this property was listed as "Fred Arbeitman (nursery)" (City of New York 1990). A small 1-story cinder block building was erected on Ralph Avenue, south of the original nursery buildings between 1962 and 1977. (See Fig.16a) This stuccoed structure, at 1901 Ralph Avenue, is presently being used for (plant) nursery sales.

To the south of the Grossman Co. building, two structures, which first appear in 1977, were also involved in nursery sales. (See Fig. 16b) One was an open-sided structure about 300 feet long. Remains of a decayed section of this long frame and open building are still standing. The smaller 1-story frame building to the east, with asbestos shingles, is also extant. Neither appears on the 1992 map. (See Fig. 17)

In the southwestern corner of Lot 1, near the intersection of Avenue K and Bergen Avenue, a golf practice range was created by 1962 - basically a flattened hill with an elevation of between 18' and 19' - as compared with the immediately adjacent sections of the study lot which range between 11.4' and 14.2'. (See Fig. 15c) The hill is littered with building debris - fragments of bricks, concrete, ceramic pipe, etc.

Near the high water line, which extends about 50' west of Paerdegat Basin's western pierhead and bulkhead line boat storage and repair business structures were erected. These were: a 1-story metal shed, approximately 80' by 20'; underground gas tanks; a small wooden shed and metal signpost. (See Fig. 15c) Approximately 120' further north was an additional metal shed, which appears to have been related to the boat business. A series of wood piles, docks and ramps extended to the water through the still marshy sections of the lot. (See Fig. 15b) A portion of the boat repair building, since c.1977 reconfigured into an L-shape, (See Figs. 16b and 17) stands on the still marshy section of the project site, and the supporting piers appear to be deteriorating. (See Photo 4)

The northern corner of Lot 1 was traversed by sewer connections between the storm sewer lines on Flatlands Avenue and Paerdegat Basin, as well as those between the "Reg. chamber housing - conc. platform" an installation which is shown on this section of the project lot in 1962 only, and the sewer lines on Ralph Avenue. (See Fig. 15a and 18)

Block 8338 Lot 300 (Bounded by Flatlands Avenue, Lot 1,
Block 8012 Lot 400 and Paerdegat Basin)

The first structure on this lot was the Sewage Pumping Station on Flatlands Avenue, erected in 1933. This building will remain on the project site. (See Photos 1 and 2) No other aboveground buildings have been built here, although several sewer lines run through the lot. (See Fig. 18) A 138" storm sewer crosses the northern corner of adjacent Lot 1 and passes through the southwest

corner of Lot 300, emptying in to the basin. The grates of this line's gate chamber are presently visible in the southern section of the lot. (See Photo 4)

A second sewer line takes the flow of 186" and 168" storm sewers and a 108" combined sewer, running on both sides of the eastern boundary of Lot 300 with Lot 400, from Flatlands Avenue to Paerdegat Basin. Also, a 72" and 48" sanitary sewer passes through the northeastern and northwestern corners of Lot 300 connecting the Flatlands Avenue lines with the pumping station. There is also a 24" bypass line which appears to be under the sidewalk in front of the station. (See Fig. 18)

Block 8012 Lot 400 (Bounded by Block 8338 Lot 300, Flatlands Avenue, Paerdegat Basin and the remainder of Lot 400)

The first structures appear by 1950. (See Fig 14) The Department of Public Works erected a 1-story concrete block chlorine storage building with a control room near the edge of the basin. Although this structure appears on all subsequent maps (See Fig. 17), it is no longer extant. All that remains is its concrete slab base. (See Photo 3)

Also appearing in 1950 is a 1-story structure along Flatlands Avenue. This structure disappears by 1977. (Compare Figs. 14 and 16a) It is replaced by six structures along Flatlands Avenue. Two are labelled "iron," but most are drawn as three- or open-sided buildings, probably sheds. (See Fig. 16a) Although two of these (in the northeastern corner of the project site) still appear on the 1992 map, (See Fig. 17) the project site section of Block 8012 has no aboveground structures, and the area is used for parking and container storage.

Two sewer lines cross Lot 400, a major outlet to Paerdegat Basin which runs along both sides of the lot's entire western boundary with Block 8338 Lot 300. Discussed above, it funnels two 186" storm sewers and a 108" combined sewer into the basin. A second line passes through the northwest corner of the lot, connecting a sanitary sewer with the pumping station. (See Fig. 18)

Bergen Avenue (Eastern half, between Ralph Avenue, Avenue K and Block 8338 Lot 300)

Aside from a 19th century drainage ditch which crossed proposed Bergen Avenue (See Fig. 11), there is no evidence of construction ever occurring in the project site section of the proposed Bergen Avenue.

V. CONCLUSIONS AND RECOMMENDATIONS

Historical Potential and Recommendations

Although many important historical structures and sites have survived in the Flatlands and Canarsie areas, none is closer than 0.9 miles to the project site (See Appendix A), and none will be adversely affected by the proposed project. In addition, there is no documented historical residential occupation of the project site, and no non-residential occupation during the historical period until the construction of the Sewage Pumping Station in 1933. The modern structures then erected, mostly small commercial sheds and buildings post-dating 1950, and their remains, are not unique, and any archaeological information they would provide is available from documentary research.

There is no evidence to warrant further archaeological testing, field investigation or monitoring for archaeological deposits from the historical period.

Prehistoric Potential

Overwhelming evidence exists that Native Americans exploited the natural resources of western Long Island for thousands of years before the arrival of Europeans. It is also clear that the tidal marshland of which the proposed Paerdegat Basin Water Quality Facility Site is a part offered an extremely rich source of food and raw materials for prehistoric man. The presence of Indian toponyms (including Castuteeuw and Muskyttehool), planting fields and three important Canarsee settlements (Keskachane, Wimbaco and Canarsee) within a 1.5 mile radius to the north, south, east and west argue strongly for a prehistoric human presence in the immediate vicinity of the project site. (See Fig. 3) As described in the discussion of the prehistoric period, this evidence does not rely only on 17th-century documentary evidence of obscure place names, but the work of many historians and archaeologists (Benjamin Thompson, Frederick Van Wyck, William Beauchamp, Arthur Parker, and Reginald Bolton) who have painstakingly recorded the past and contemporary unearthing of "Indian relics" in Canarsie, Bergen Beach (Wimbaco) and Flatlands (Keskachane), and carried out excavations, such as Ralph Solecki's investigations along the route of the Belt Parkway near Jamaica Bay (Wimbaco and Canarsee - See Fig. 4 and Appendix A).

Settlement pattern data of the prehistoric culture periods reveal a strong correlation between habitation and processing sites and the confluence of two water courses, proximity to a major waterway, a marsh resource and/or well-drained, elevated land. A review of the cartographic and historical evidence confirms that some of these criteria are met in the project site, namely, the presence of a marshland and of Paerdegat Creek. However, despite these assets which would have proven attractive to Native Americans, most of the site, itself a tidal wetland, can not be, and historically has never been, described as elevated or well-drained land. Four of the six borings on the project site (See Appendix B: 1, 2, B26, B27) indicate a layer of modern fill of between 10' and 15' thick, with the water table seeping several feet into the fill layer.

The fifth (B25) and the sixth borings (B13) which are adjacent, are the only two borings which do not conform to this pattern. Both exhibit large layers of fill, 10' and 13', respectively. However, between the water table and the fill are 4.5' to 6.5' of sand and silt. If the Borings Location Map (Appendix B) and Figure 11 are compared, it is evident that these two borings encountered the disturbance caused by the excavation of the drainage ditch and the construction of the small path c.1899, the only documented pre-fill disturbances. The presence of silt also suggests swift-running water which might be found in a rivulet or drainage channel, rather than the peat layers in the neighboring borings which indicate still water.

The other 17 borings, taken in the vicinity of the project site, provide a profile similar to the first four, with a fill layer ranging from 12' (C9) to 20' (C1) feet thick, and extending below the water level. Beneath the fill is often a layer of peat. Although it is likely that the estuarine resources of the site were tapped, these numbers indicate a project site that was too inundated a setting for an Indian campsite or processing station. The New York State Museum bases its "high probability" rating on the possibility that "if near water or deeply buried, materials may occur submerged below the water table," which suggests the combined action of rising sea levels and the compressing of prehistoric layers by heavy fill. However, the project site was recorded as a low-lying area, long before the introduction of fill. Prior to inundation, it is possible that it could have been an elevated site; however, because of the historically documented flatness of the project area and its vicinity, this would have created a dry

plain, traversed by a few creeks. This sort of environment, from what we know of prehistoric settlement patterns, would not be preferred by early Native Americans.

Although the lack of Building Department records makes it difficult to describe the extent of disturbance to the original project site surface, the depth of disturbance may be inferred from our knowledge of historical site conditions, and the types of structures that were erected there during the 20th century. Archaeologists often refer to a layer of fill as a "protective layer," because the fill absorbs the brunt of construction disturbance, and leaves the more deeply buried archaeological remains untouched. Because of the presence of a thick fill layer on the Paerdegat Basin site, the large number of historical construction intrusions have caused little disturbance to the pre-fill surface of the project lots. Except for the Sewage Pumping Station, all the buildings have been single story frame or concrete block structures, many of them little more than sheds, with metal walls, or no walls at all. Even the former chlorine storage structure sat on a concrete slab. (See Photo 3) Foundations for such structures rarely penetrate beyond four feet, and basements rarely beyond ten feet. The borings show no fill layer thinner than 11'. Basements deeper than this would have been impractical, given the high water table. Basements would have been possible in areas of particularly deep fill, but again, this excavation would not have penetrated the pre-fill surface. Because of the size and massiveness of the Pumping Station, piles were certainly necessary, given the swampy nature of the original surface, and the abovementioned sinking of the recently-built dwellings on the same sort of swampland in Canarsie (Connie Kaplan, personal communication, 5-27-93).

The most extensive disturbance to the prehistoric surface is probably the sewer lines which cross the northeast corner of the project area, mainly on Lots 300 and 400. It is inconceivable that the line which receives the combined flow of a 186" (15.5'), 168" (14') and 108 (9') sewer, would not cause below-fill disturbance even in an area with eleven feet of fill (Borings 1 and 2, Appendix B). Furthermore, although sections of these sewer lines might be just below the present ground surface, at least their discharge openings into Paerdegat Basin would be substantially lower - at water level, given the existence of tide gate chambers on some of the sewer lines. (See Figs. 15a and 18) In addition, sewer lines would also require piles to prevent their sinking and rupturing from stress.

According to this scenario, aside from the 19th century drainage ditch and path, (See Fig. 11) disturbance is confined to Block 8338 Lot 300 and the northeast corner of Lot 1, as well as the western and northern sections of Block 8012 Lot 400. These areas are all beneath sewer lines and the pumping station, and except for the T-shaped "Reg. chamber" at the corner of Flatlands and Ralph Avenues, (See Fig. 15a) are delineated on the Brooklyn Sewer Records Map. (See Fig. 18)

Recommendations

The evaluation of historical disturbance leaves large sections of the project site intact beneath a protective fill layer. Although the low-lying and inundated nature of the project site would have precluded habitation or processing sites, the salt marsh once there offered resources that certainly would have attracted Native American hunting, fishing, and gathering expeditions. These activities would result in only the stray lost or discarded artifact, which, out of context, would provide little or no useful information regarding Indian culture, lifeways, or settlement patterns. The time, cost, and effort expended for support sheeting and dewatering in order to locate and excavate prehistoric cultural resources buried beneath at least 10' of fill and below the water table, as well as the danger to personnel involved, is not warranted by the low probability of finding intact submerged deposits, or by the questionable value of the data which are anticipated. The evidence for the existence of more extensive prehistoric deposits is not sufficient to warrant further archaeological testing, field investigations or monitoring.

BIBLIOGRAPHY

Army Map Service

- 1947 "Brooklyn." Corps of Engineers, War Department,
Washington, D.C.

Bailey, J. T.

- 1840 An Historical Sketch of the City of Brooklyn, and the
Surrounding Neighborhood. (New York Public Library)

Beauchamp, William M.

- 1978 Aboriginal Occupation of New York. Reprint of 1900
edition. AMS Press, New York.

Bolton, Reginald P.

- 1972 Indian Life of Long Ago in the City of New York. Enlarged
edition. Harmony Books, New York.

- 1922 Indian Paths in the Great Metropolis. Indian Notes and
Monographs, #23. Museum of the American Indian - Heye
Foundation, New York.

Brodhead, John R.

- 1853 History of the State of New York. Harper and Brothers,
New York.

Brooklyn Citizen

- 1941 "Part of Flatbush Forest, Former Home of Canarsie Indians
to be Preserved," The Brooklyn Citizen, September 25
(Brooklyn Historical Society Microfiche vol. 60 p.99).

City of New York

- 1990 "Paerdegat Basin Land Use," #W-2554. Borough of
Brooklyn, Office of the President, Topographical Bureau.
April 2.
- 1962 "Topographical Map for the Marginal P.C.P. Storm Water
Treatment Plant Paerdegat Basin," #468A. City of
New York, Department of Public Works, Division of
Engineering Services, Topographical Section. August 17,
Sheet 2 of 5.
- 1924 Sectional Aerial Map of the City of New York. Board of
Estimate and Apportionment, New York (Repository:
Department of General Services - Subsurface Exploration
Section).

- Dankers, Jasper and Peter Sluyter
 1966 Journal of a Voyage to New York. Reprint of 1867 edition.
 University Microfilms, Ann Arbor.
- Eisenberg, Leonard
 1978 "Paleo-Indian Settlement Pattern in the Hudson and Delaware River Drainages." in Occasional Publications in Northeastern Anthropology, vol. 4.
- Grumet, Robert Steven
 1981 Native American Place Names in New York City. Museum of the City of New York.
- Gwynne, Gretchen Anderson
 1982 "Prehistoric Archaeology at Mount Sinai Harbor, Suffolk County, New York." in The Second Coastal Archaeology Reader, vol. V. (J. Truex, ed.), SCAA, Stony Brook, NY.
- Hazen and Sawyer
 1991 "Paerdegat Basin Water Quality Facility Plan Draft Facility Planning Report." Prepared by Hazen and Sawyer, P.C., HydroQual, Inc. for the City of New York Department of Environmental Protection, Bureau of Heavy Construction September 1991 (Repository: Allee King Rosen & Fleming, Inc.).
- Kearns, Betsy, Cece Kirkorian and Richard Schaefer
 1988 "Phase 1A Archaeological Report for the USPS Brooklyn GMF/VMF Environmental Assessment Spring Creek Site, Brooklyn, New York." Prepared by Historical Perspectives, Inc. for Parsons Brinckerhoff Quade & Douglas, Inc.
- Ment, David
 1979 The Shaping of a City: a Brief History of Brooklyn. Brooklyn Educational and Cultural Alliance, Brooklyn, NY.
- Newton, John W.
 1958 "Economy Ax 'Wins' Flatlands Long Fight to Close Incinerator," Journal American, June 27 (Brooklyn Historical Society Microfiche vol. 118, p.124).
- New York World-Tribune
 1956 "City to Oust Paerdegat's Squatters," New York World-Tribune. October 17 (Brooklyn Historical Society Microfiche, vol. 8, p.84).

- O'Halloran, John
1950 "Canarsee Indian Village Sites," Long Island Forum.
April, 63-64, 66, 75.
- Ostrander, Stephen M.
1894 A History of the City of Brooklyn and Kings County, 2
vols. Brooklyn.
- Parker, Arthur C.
1920 "The Archeological History of New York - Part II"
New York State Museum Bulletin. 237/238,
September/October, 471-743.
- Ritchie, William A.
1980 The Archaeology of New York State. Revised edition.
Harbor Hill Books, Harrison, New York.
- Ross, Peter
1903 A History of Long Island from Its earliest Settlement
to the Present Time, vol. 1. Lewis Publishing Co.,
New York.
- Sanborn
1907 Insurance Maps of the Borough of Brooklyn New York
1930 vol. 15. Sanborn Map Company, New York.
1950
- Saxon, Walter
1978 "The Paleo-Indian on Long Island." in The Coastal
Archeology Reader, vol. II. SCAA, Stony Brook, NY.
- Smith, Carlyle Shreeve
1950 "The Archaeology of Coastal New York," vol. 43, part 2,
Anthropological Papers of the American Museum of Natural
History, New York.
- Sterne, Michael, ed.
1985 New York Times' Guide to Where to Live in and Around
New York. Times Books, New York.
- Stiles, Henry R., ed.
1884 The Civil, Political, Professional and Ecclesiastical
History and Commercial and Industrial Record of the
County of Kings and the City of Brooklyn, N.Y. from 1683
to 1884. W. W. Munsell and Co., New York.

- Thompson, Benjamin Franklin
1918 History of Long Island from Its Discovery and Settlement to the Present Time. 3rd edition, vol 1. Robert H. Dodd, New York.
- USGS
1897 "Brooklyn Quadrangle." United States Geological Survey,
1900 Reston, VA.
1916
1931
1979
- Van Wyck, Frederick
1924 Keskachauge, or the First White Settlement on Long Island. G. P. Putnam's Sons - the Knickerbocker Press, New York.
- Willensky, Elliot and Norval White
1988 The AIA Guide to New York City. Third edition. Harcourt Brace Jovanovich, New York.
- WPA Guide
1982 The WPA Guide to New York City. Reprint of 1939 edition. Pantheon Books, New York.
- Wyatt, Ronald J.
1982 "The Archaic on Long Island." in The Second Coastal Archaeology Reader vol. V (J. Truex, ed.), SCAA, New York.

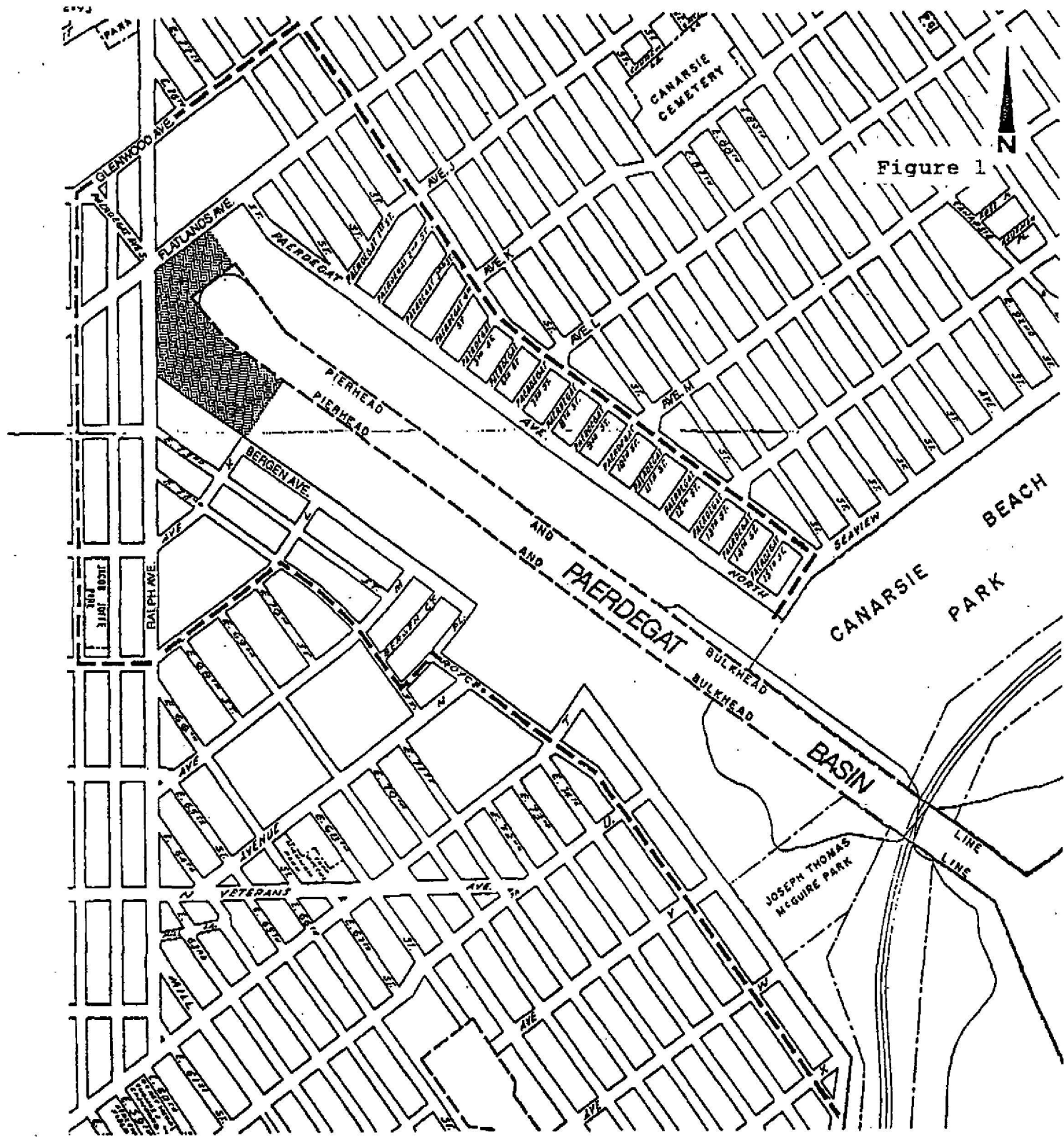
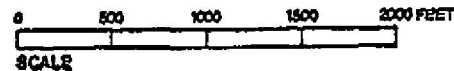


Figure 1

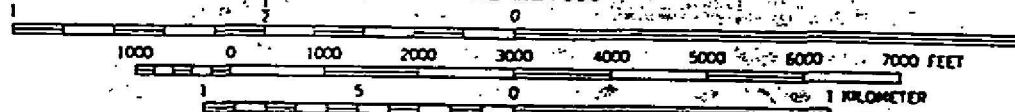
- Proposed Project Site
- Land Use Study Area Boundary



Project Site Location Map

Figure 2

SCALE 1:24 000



CONTOUR INTERVAL 10 FEET

DOTTED LINES REPRESENT 5-FOOT CONTOURS

NATIONAL GEODETTIC VERTICAL DATUM OF 1929

DEPTH CURVES AND SOUNDINGS IN FEET—DATUM IS MEAN LOW WATER

THE RELATIONSHIP BETWEEN THE TWO DATUMS IS VARIABLE

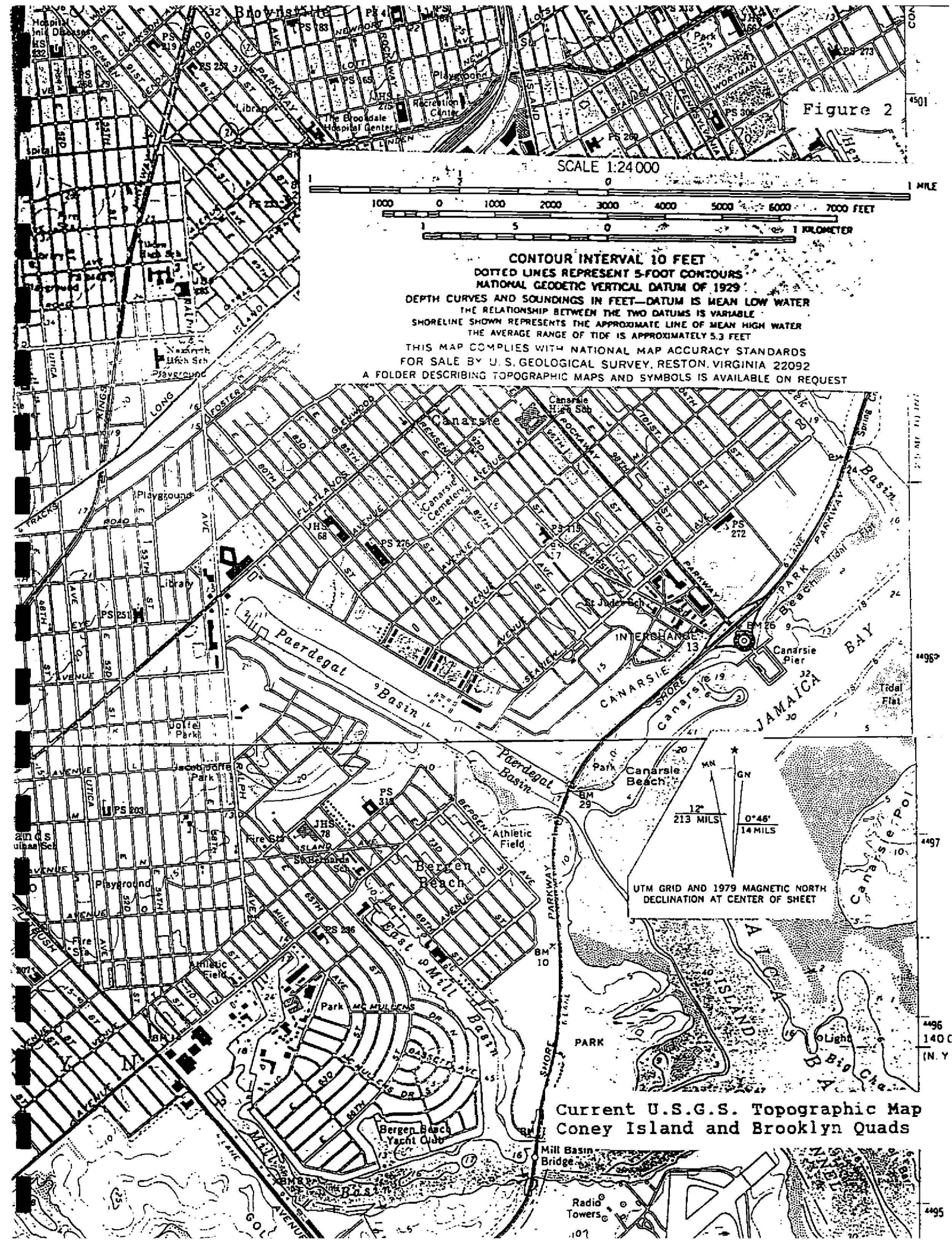
SHORELINE SHOWN REPRESENTS THE APPROXIMATE LINE OF MEAN HIGH WATER

THE AVERAGE RANGE OF TIDE IS APPROXIMATELY 5.3 FEET

THIS MAP COMPLIES WITH NATIONAL MAP ACCURACY STANDARDS

FOR SALE BY U.S. GEOLOGICAL SURVEY, RESTON, VIRGINIA 22092

A FOLDER DESCRIBING TOPOGRAPHIC MAPS AND SYMBOLS IS AVAILABLE ON REQUEST

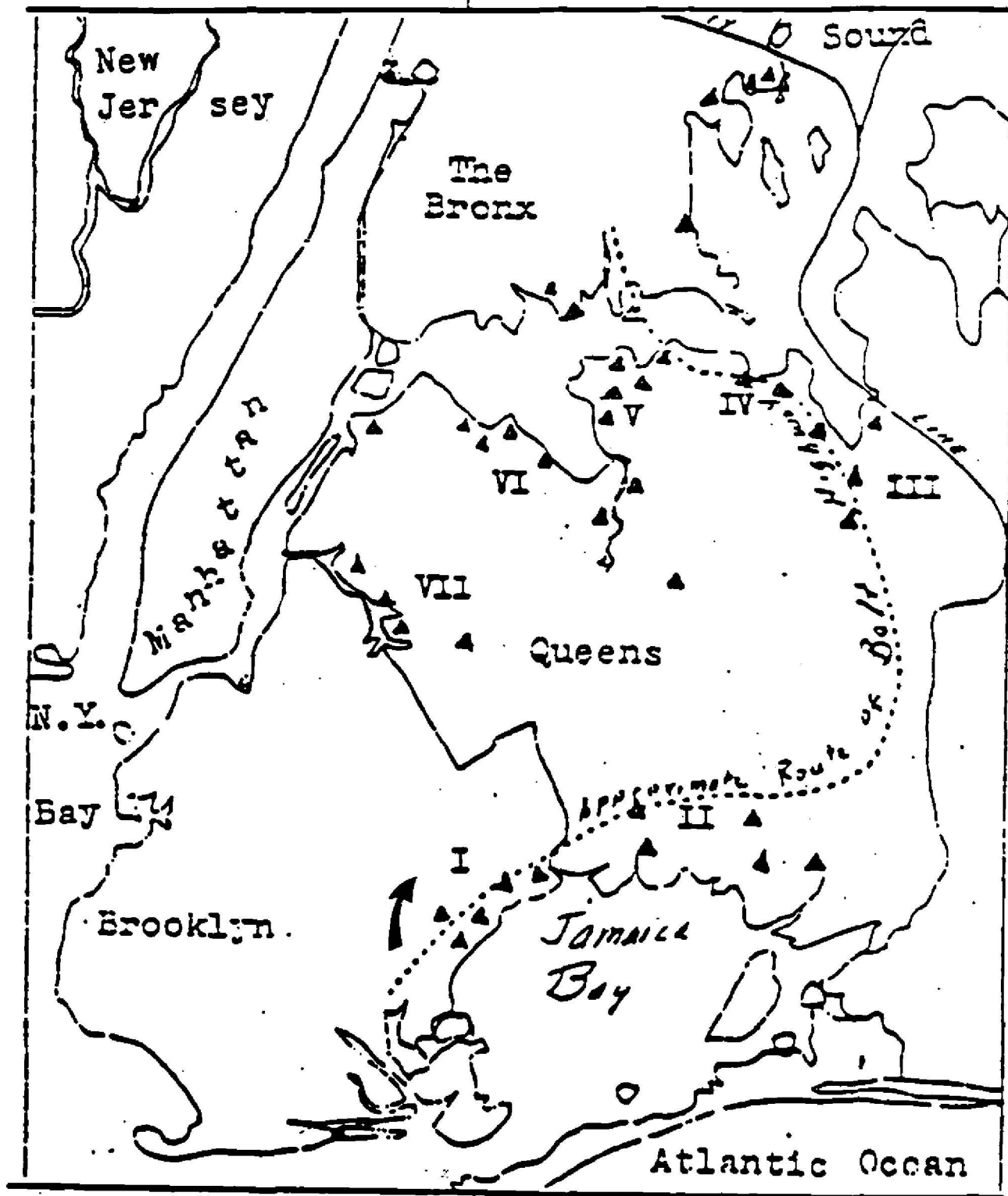


UTM GRID AND 1979 MAGNETIC NORTH DECLINATION AT CENTER OF SHEET

Current U.S.G.S. Topographic Map
Coney Island and Brooklyn Quads

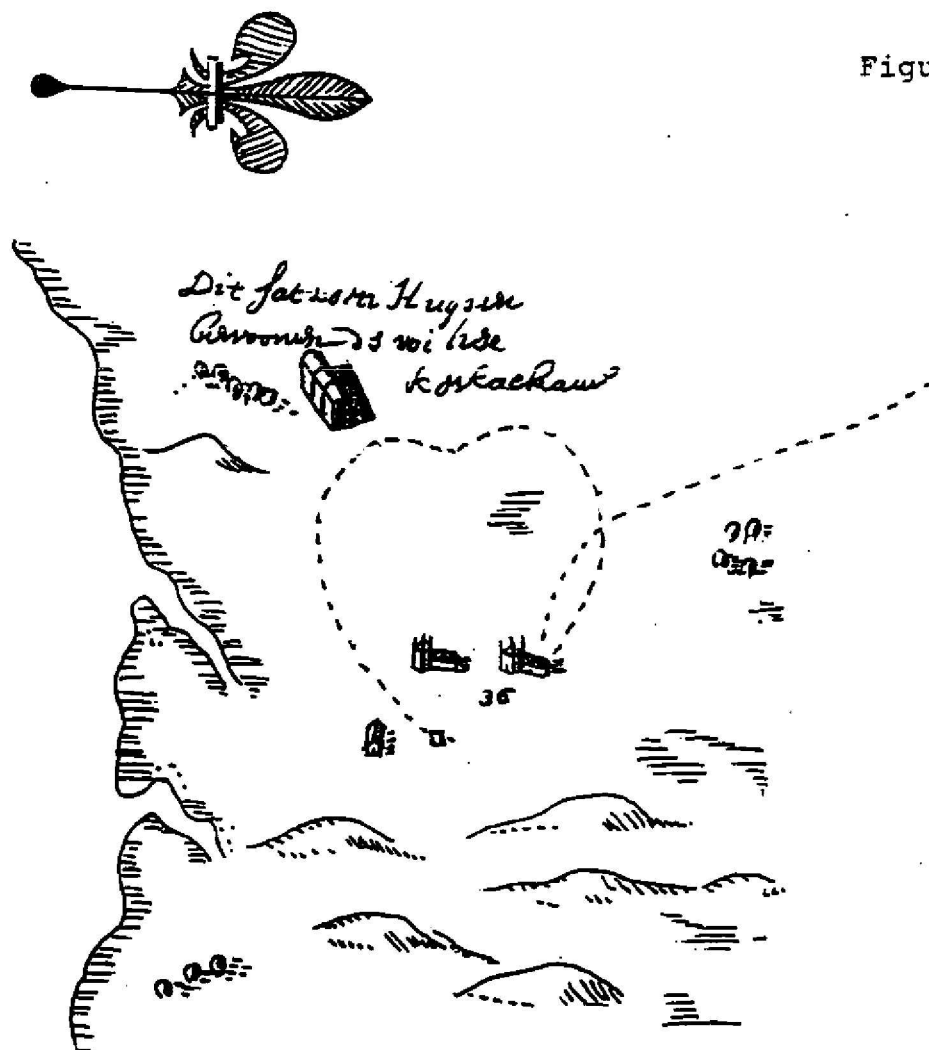
[illegible]

Map of Native American Trails, Planting Areas and
Habitation Sites, with Indian Names of Local Origin
(Grumet 1981:70)



INDIAN VILLAGE SITES: Triangles on diagram indicate sites explored by Committee on American Anthropology of the Flushing Historical Society. Important locations described in accompanying article are numbered.

Figure 5



36: 2 place in 2 bou. van wolfert
Geritsz met 2 woldyn confor

[36: 2 plantations and 2 farms of Wolfert
Geritsz. with 2 of his partner]

DETAIL FROM:
THE MANATUS MAP
J. VINGBOONS, 1639

LIBRARY OF CONGRESS COPY-FACSIMILE
NYPL. RGS

Figure 6

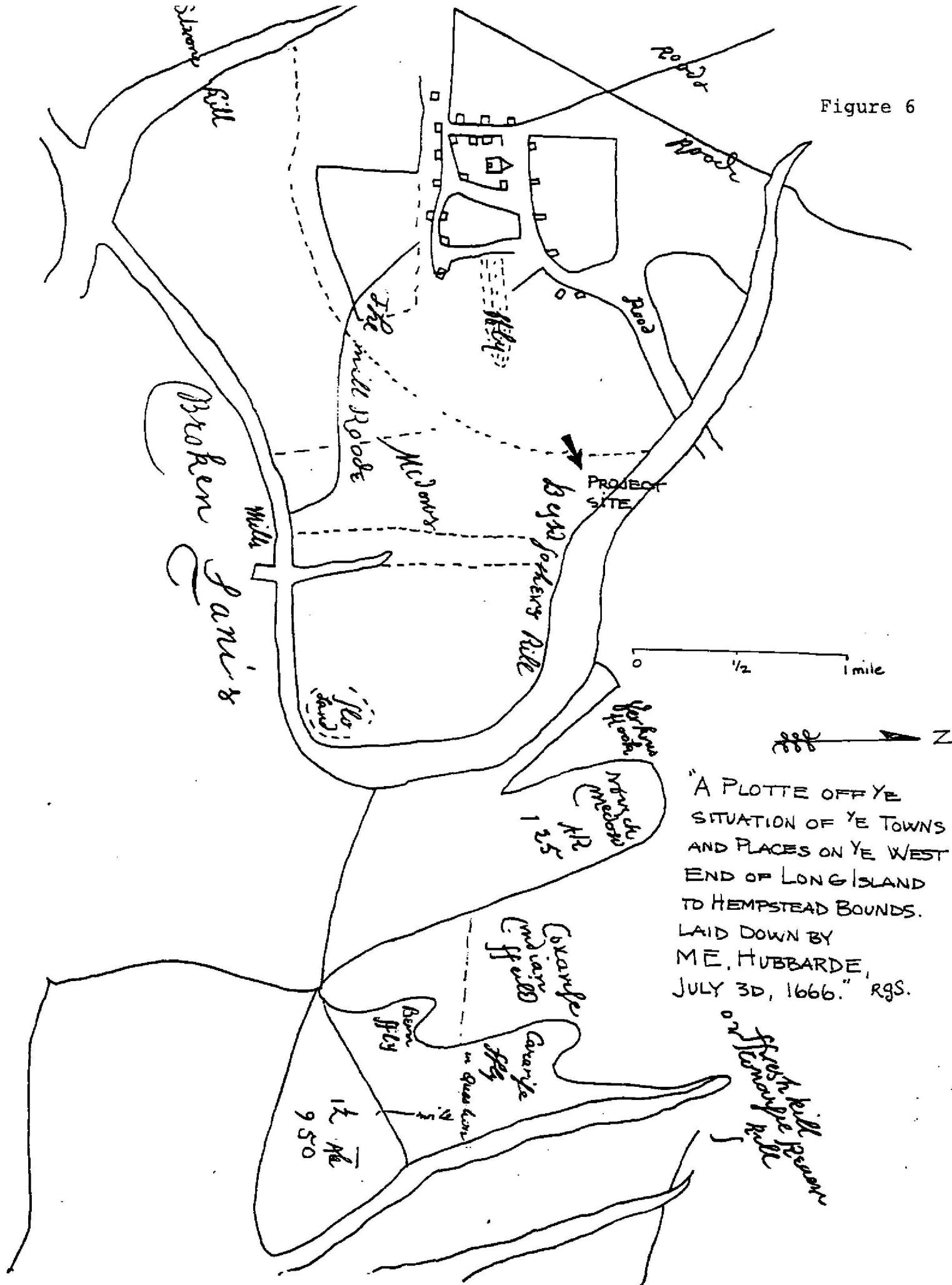
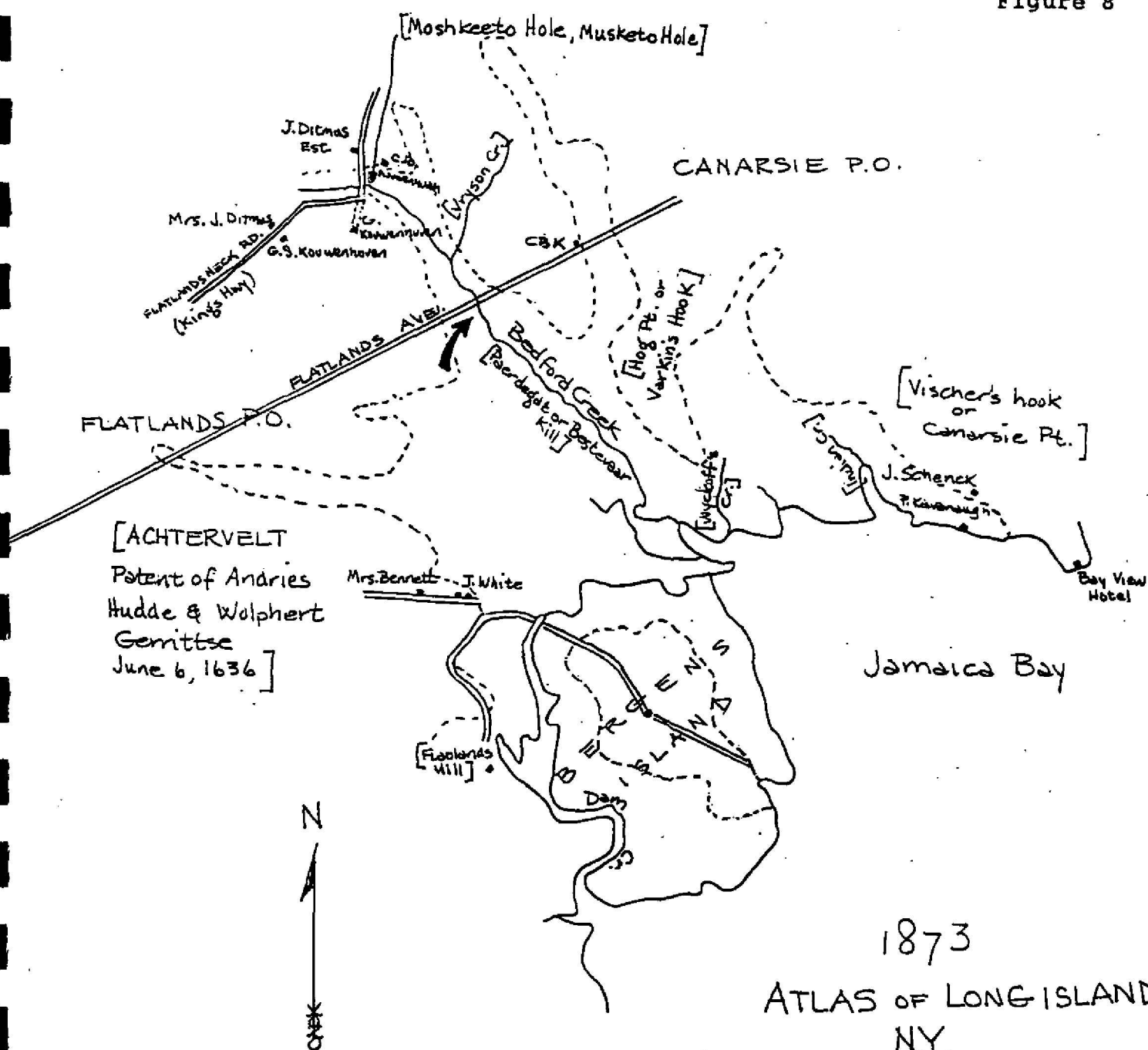


Figure 8



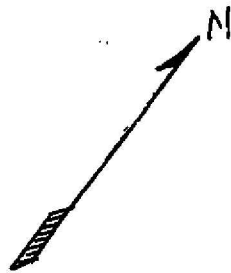
1873
ATLAS OF LONG ISLAND,
N.Y.

F.W. BEERS PL. 35

WITH PARENTHETICAL [] ADDITIONS
FROM "AMERSFOORDT OR FLATLANDS"
MS. MAP OF DUTCH LANDGRANTS
DRAWN ON PLATE 35 OF BEERS' ATLAS
OF LONG ISLAND BY H. Stebbins Smith.

limits of swamp ---
ORIGINAL SCALE: 120 RODS (1,980') to 1"
0' 790' 1,980'

RG8

[illegible]

Dotted lines indicate
the project site.

Figure 10



U.S.G.S Topographic Map, 1897
Brooklyn Quad

Figure 11

1899
ATLAS OF THE BROOKLYN
BOROUGH OF THE CITY OF
NEW YORK VOL. 3 PL. 25
E.B. HYDE

--- STREETS UNOPENED
R.G.S.

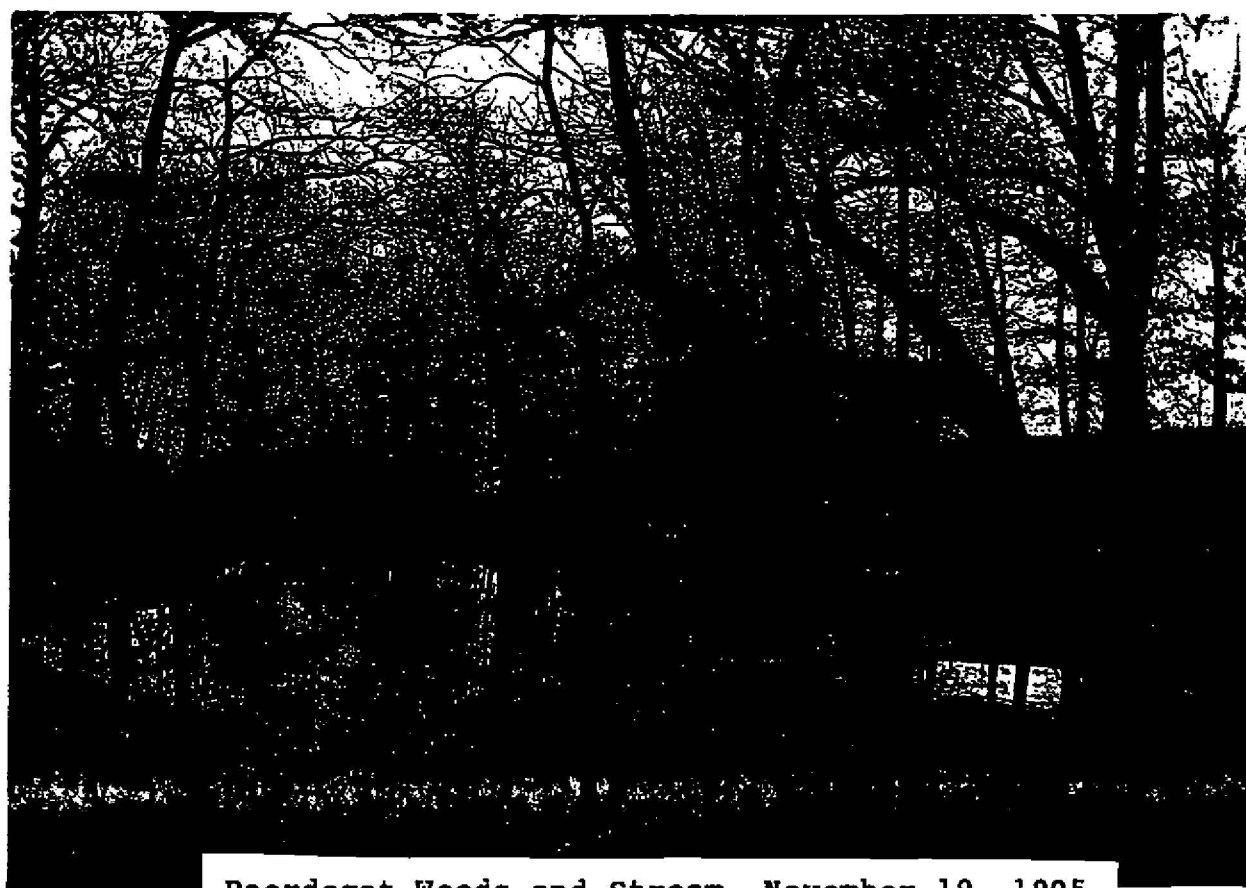
Dotted lines indicate
the project site.

[illegible]



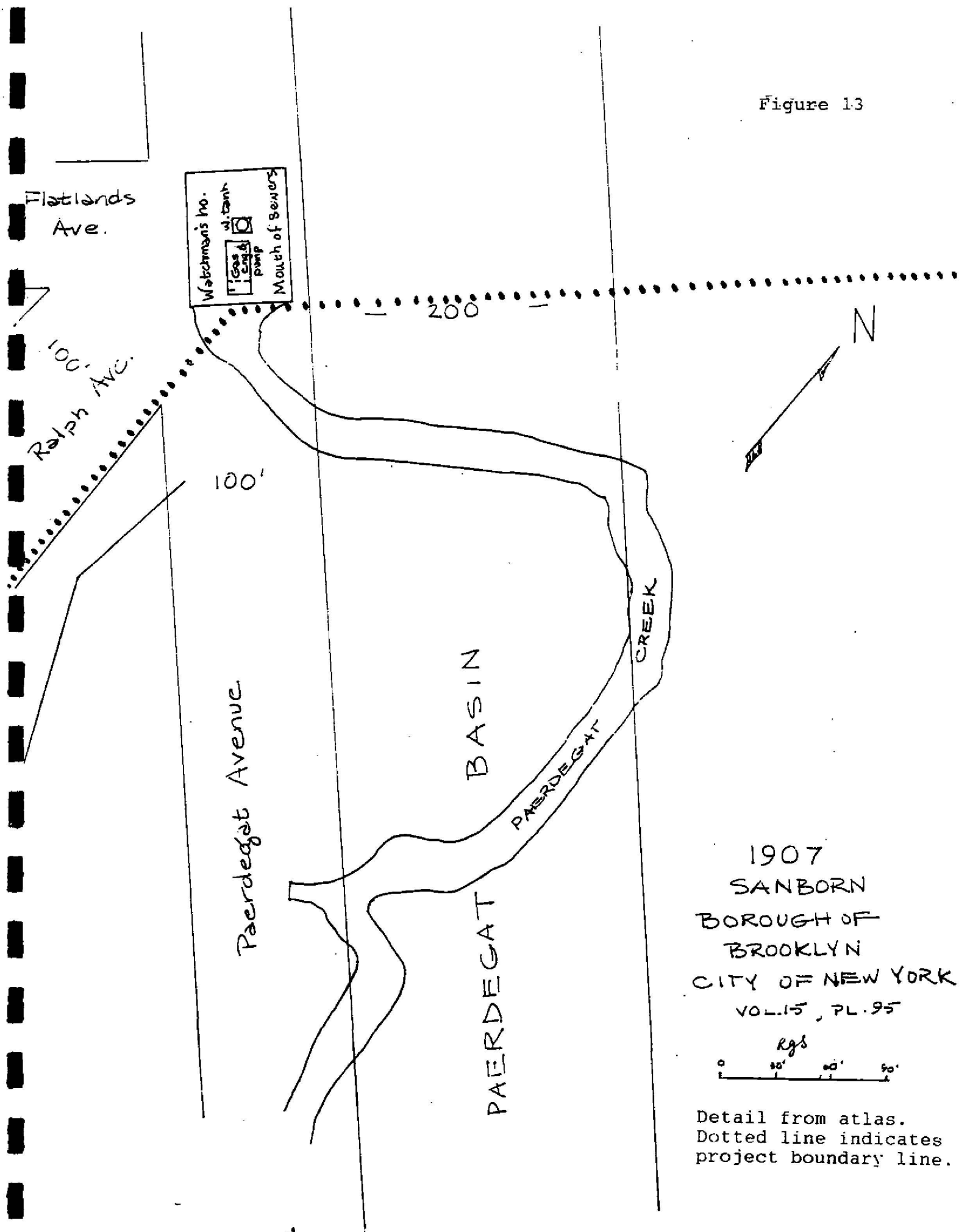
Figure 12

60
Bridge over Paerdegat Creek (c.1900)
Collection of the Brooklyn Historical Society



Paerdegat Woods and Stream, November 19, 1905
Collection of the Brooklyn Historical Society

Figure 13



RALPH
AL

03330

Lot 1

Lot 300

FLATLANDS AVE.

1950
SANBORN INSURANCE
MAPS OF BROOKLYN,
NEW YORK

1930 corrected to 1950

VOL.13 PL.56

NYPL

B8012

L 460

Detail from atlas.
Dashed line indicates
project boundary line.

0 60 120

Figure 15a

Detail. Dashed line indicates project boundary line.

SEE "CENTRAL SECTION"

SEE "CENTRAL SECTION"

Topographical Map for the Marginal P.C.P. Storm Water Treatment Plant Paerdegat Basin August 17, 1962. #468a - Sheet 2 of 5. City of New York. Engineering Services, Topographical Section

11.7

U.S. PIERHEAD

PAERDEGAT BASIN

BULKHEAD LINE

Figure 15b

10" WOOD PILES & DOCKS IN THIS AREA

Bottom of Bank and
Top of Bank
End of Ramp to Floats
High Water Line
End of Ramp to Floats

Conc. 58b- Gas Tanks Undergr

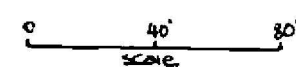
SEE "NORTHERN SECTION"

SEE "SOUTHERN SECTION"

FILLED

IN

N



BERGEN AVE.

8.8 14.2

9.2

Detail. Dashed line indicates project boundary line.

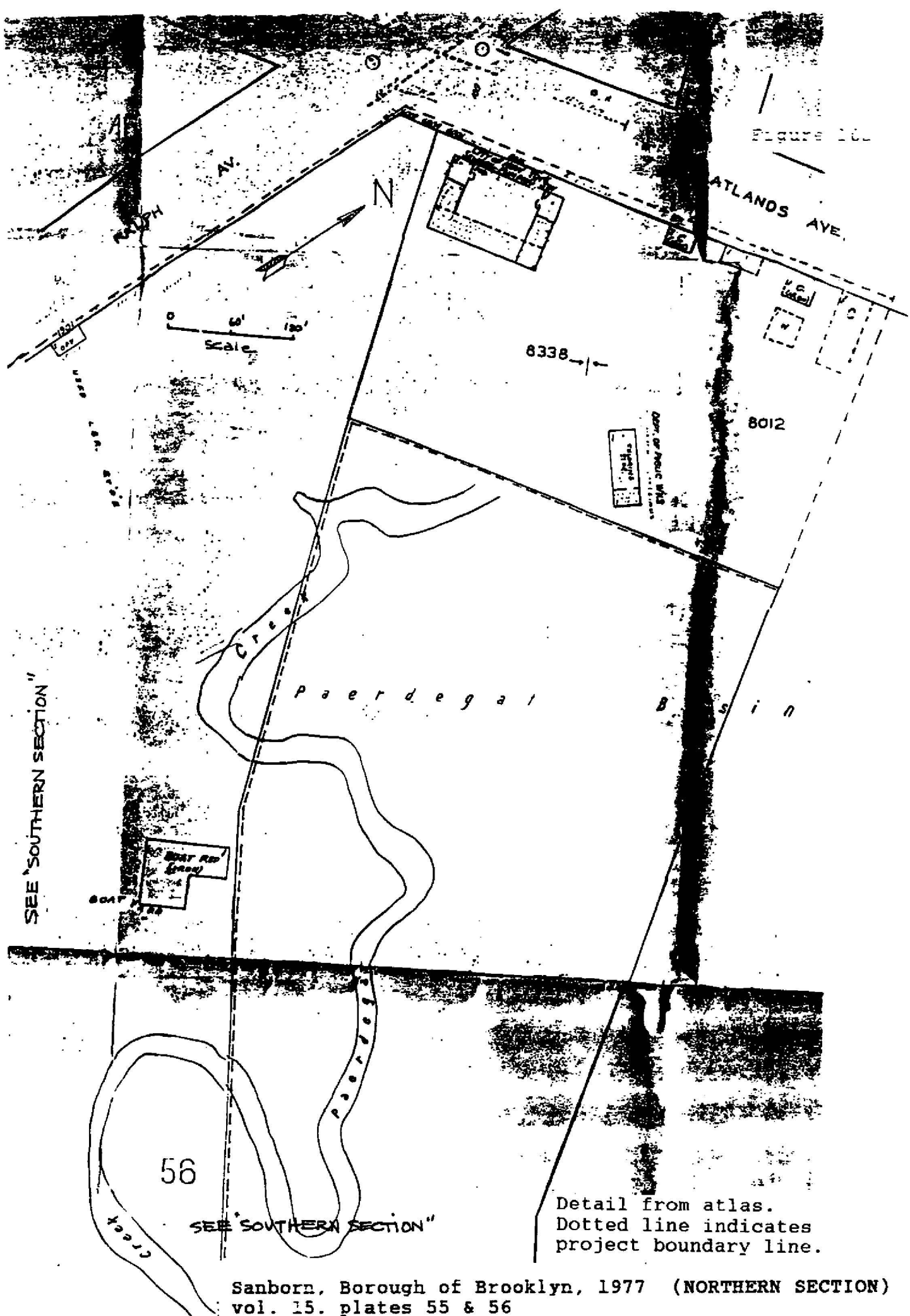
CENTRAL SECTION

Topographical Map for the Marginal P.C.P. Storm Water Treatment Plant Paerdegat Basin August 17, 1962. #468a - Sheet 2 of 5, City of New York, Engineering Services. Topographical Section

PAERDEGAT AVE

60'

Topographical Map for the Marginal P.C.P. Storm Water Treatment Plant Paerdegat Basin August 17, 1962. #468a - Sheet 2 of 5. City of New York. Engineering Services. Topographical Section



SEE "NORTHERN SECTION" Figure 16b

RALPH AVE.

BOAT STGE. & SALES

HURDLY
SALES

N

Creek

P a c e r d e g a t

BOAT REPAIR
(IRON)

BOAT YARD

MARGINAL STREET WHARF OR PLACE

8338

0 60 120
Scale

56

Creek

58

Detail from atlas.
Dashed line indicates
project boundary line.

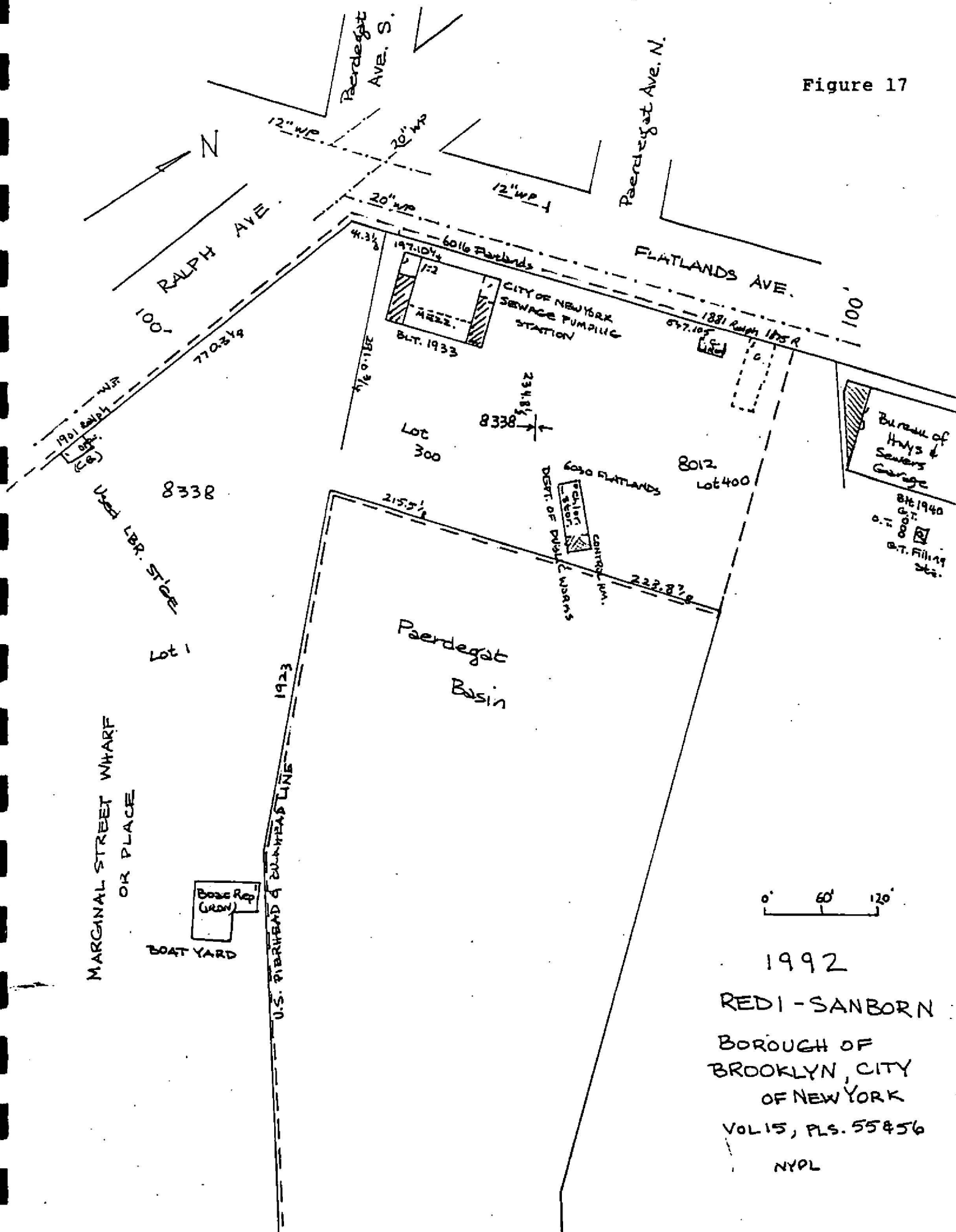
See Volume 22-11

Sanborn, Borough of Brooklyn, 1977 (SOUTHERN SECTION)
vol. 15. plates 55 & 56

BERGEN - AV. - (PACERDEGAT - AV. - 30 JTS)

Brooklyn

Figure 17



1992
REDI-SANBORN
BOROUGH OF
BROOKLYN, CITY
OF NEW YORK
VOL 15, PLS. 55 & 56
NYPL

for connections to
center. See Opw

FLATLANDS AVE.

Page 26

Paardegat

168th Storm

Ave. North

Page 26

Page 26

00

1m5p Tr. 6200

00-2-54

26" Sew. 3barrel
Cont: 2621
Plan 1414

Cont. 2621
Plan 1414

Overflow Chamber

RALPH
123.256

74-05/8

Brooklyn Sewer Records
Book DD, vol. 3, p.32

102-1074
Cont. 3502 plan

U.S. Pierhead Bulkhead Line.

Paardegat. Basin

Figure 13

2000

to, cover and
to
see proof
Exhibit 30

2nd Lt 2 barrel
Cont. 3431
Plan 1164
For 48th force main
Cont. 3562 Plan 1117

2601
FOI 117
3A31
1164
for 48" force main
Conn. Cont. 3502 Plan 117



Photo 1: Sewage Pumping Station on project site at the intersection of Flatlands and Ralph Avenues. Looking southeast from Flatlands Avenue.

Photo 2: Sewage Pumping Station, looking south from Flatlands Avenue.





Photo 3: Paerdegat Basin, looking southeast to west shore from behind the pumping station. Note concrete slab in the foreground, site of former chlorine storage structure.

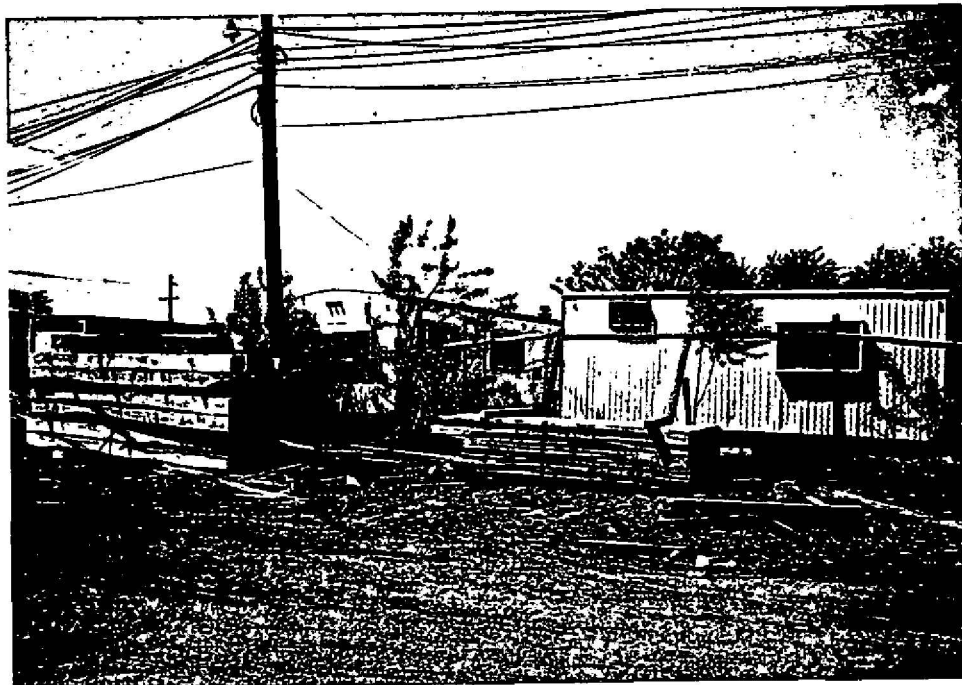
Photo 4: Paerdegat Basin, west shore, looking southeast from behind the pumping station. Note grate of gate chamber in foreground. White building along shore is the boat repair structure.





Photo 5: Section of used lumber yard, south of Flatlands Avenue, east of Bergen Avenue (dirt road). Trailer of Bureau of Highway Operations Resident Engineers Office at right.

Photo 6: Trailers of the Bureau of Highway Operations Resident Engineers Office, south of used lumber yard.





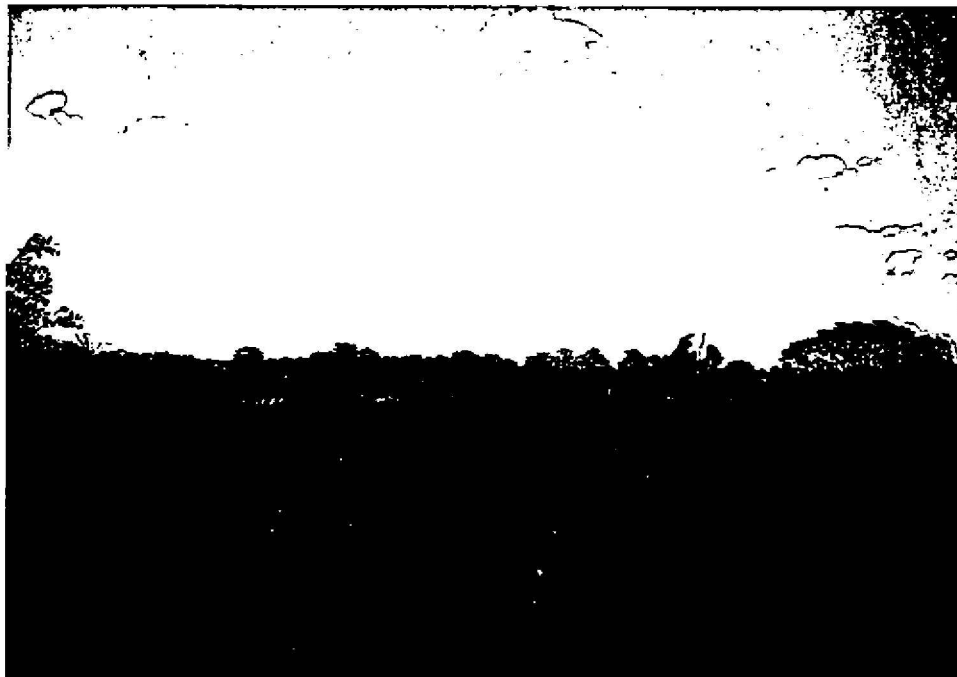
Photos 7 and 8: Nursery sales lot, south of used lumber yard and the remains of the long open-frame nursery building. Looking southeast toward proposed Bergen Avenue.

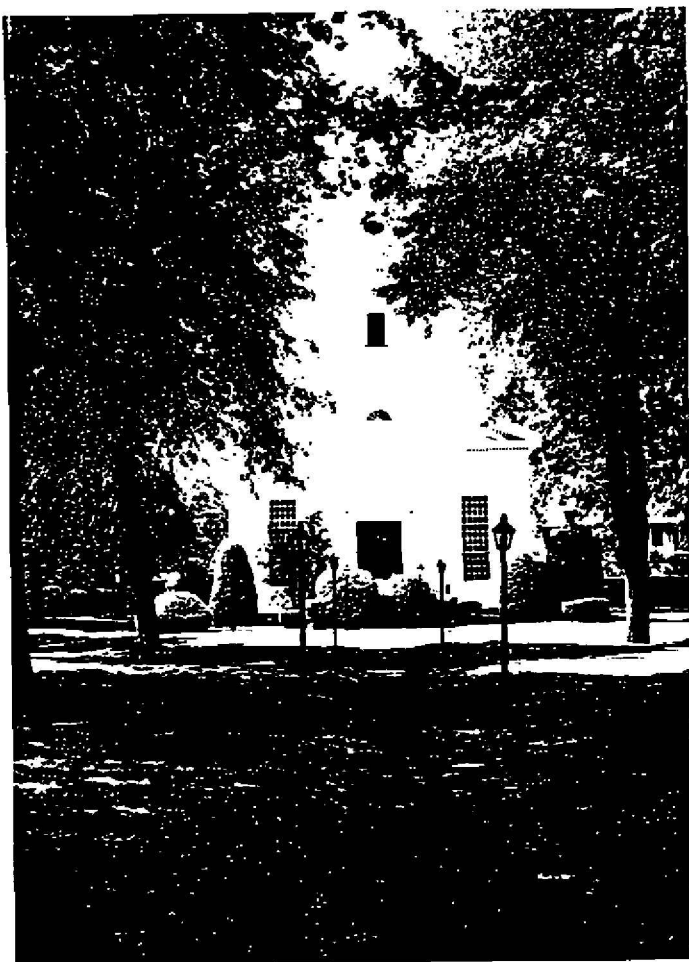




Photo 9: Paerdegat Basin Water Quality Facility Site looking north from elevated ridge of former golf range near the corner of Bergen Avenue and Avenue K. Stack to right of center is pumping station. Round white building is school across Flatlands Avenue from project site. Note building debris at midground.

Photo 10: View east toward Paerdegat Basin from golf range ridge near Bergen Avenue and Avenue K.





Photos 11 and 12: Flatlands Dutch Reformed Church and Graveyard, Kings Highway and Overbaugh Place, 1.2 miles west of project site. Third Dutch church on this site, first erected 1663, present building 1848. Church grounds and graveyard the site of Indian settlement and burial place known as Keskachane.



ARCHEOLOGICAL SITE INVENTORY FORM

DIVISION FOR HISTORIC PRESERVATION
NEW YORK STATE PARKS AND RECREATION
ALBANY, NEW YORK

518 474-0479

FOR OFFICE USE ONLY

UNIQUE SITE NO. A047-01-0121
QUAD. Coney Island
SERIES U.S.G.S 7 1/2'
NEG. NO. _____

REPORTED BY: John Milner Associates

YOUR ADDRESS: West Chester, Pennsylvania TELEPHONE: _____

ORGANIZATION (if any): NYS Contract CX-2000-7-0010

DATE: 2/10/78

1. SITE NAME: JB-74 John Eldert House Site

2. COUNTY: Kings TOWN/CITY: _____ VILLAGE: _____

3. LOCATION: Belmont Ave. & Mill Road (Former streets just north of Mill Island - area between Mill Basin & East Mill Basin)

4. PRESENT OWNER: _____

5. OWNER'S ADDRESS: _____

6. DESCRIPTION, CONDITION, EVIDENCE OF SITE: See Attached Form

- | | |
|---|--|
| <input type="checkbox"/> STANDING RUINS | <input type="checkbox"/> CELLAR HOLE WITH WALLS |
| <input type="checkbox"/> SURFACE TRACES VISIBLE | <input type="checkbox"/> WALLS WITHOUT CELLAR HOLE |
| <input type="checkbox"/> UNDER CULTIVATION | <input type="checkbox"/> EROSION <input type="checkbox"/> UNDERWATER |
| <input type="checkbox"/> NO VISIBLE EVIDENCE | <input type="checkbox"/> OTHER _____ |

7. COLLECTION OF MATERIAL FROM SITE:

- | | | |
|--|---------------|------------|
| <input type="checkbox"/> SURFACE HUNTING | BY WHOM _____ | DATE _____ |
| <input type="checkbox"/> TESTING | BY WHOM _____ | DATE _____ |
| <input type="checkbox"/> EXCAVATION | BY WHOM _____ | DATE _____ |
| <input type="checkbox"/> NONE | | |

PRESENT REPOSITORY OF MATERIALS: _____

8. PREHISTORIC CULTURAL AFFILIATION OR DATE: _____



NATIONAL HERITAGE

Historic Site Survey Record

Coney Island U.S.G.S. 7.5' Quadrangle (1966)

View:

UTM Grid ⁴⁴ 96,590m.N.

Camera Facing:

⁵ 92,650m.E.

1. NAME
Historic JB-74
Common John Eldert House

2. LOCATION Formerly just north of Mill Island
Street & No. Jamaica Bay

Note: Not specifically w/i the leg. boundaries of gateway. Due to the extreme nature of 20th cen. disturbance in this area, this location should not be taken to be precise.

Zoning: _____ Map Reference Key # _____

3. CLASSIFICATION

CATEGORY (Check One)	OWNERSHIP	STATUS	ACCESSIBLE TO PUBLIC
<input type="checkbox"/> District <input type="checkbox"/> Building	<input checked="" type="checkbox"/> Public	<input type="checkbox"/> Occupied	<input type="checkbox"/> Yes:
<input checked="" type="checkbox"/> Site <input type="checkbox"/> Structure	<input type="checkbox"/> Private	<input checked="" type="checkbox"/> Unoccupied	<input checked="" type="checkbox"/> Restricted
<input type="checkbox"/> Object	<input type="checkbox"/> Both	<input type="checkbox"/> In Process	<input type="checkbox"/> Unrestricted
		<input type="checkbox"/> Being Considered	<input type="checkbox"/> No
		<input type="checkbox"/> Pres. <input type="checkbox"/> Altera.	

PRESENT USE (Check One or More if Applicable)

<input type="checkbox"/> Agriculture	<input checked="" type="checkbox"/> Government	<input type="checkbox"/> Museum	<input type="checkbox"/> Religious	<input type="checkbox"/> Scientific
<input type="checkbox"/> Commercial	<input type="checkbox"/> Industrial	<input checked="" type="checkbox"/> Park	<input type="checkbox"/> Rental Residence	<input type="checkbox"/> Transportation
<input type="checkbox"/> Educational	<input type="checkbox"/> Military	<input type="checkbox"/> Private Residence (Owner Occupied)	<input type="checkbox"/> Single Family	<input type="checkbox"/> Other
			<input type="checkbox"/> Double	
			<input type="checkbox"/> Multiple	

ORIGINAL USE: Residential Structure

4a. OWNERSHIP (Present)	4b. OWNERSHIP (Original, if known):
Name: <u>National Park Service</u>	<u>John Eldert</u>
Street and Number:	4c. BUILDER/ARCHITECT (if known):
City or Town:	

5. DESCRIPTION Photographs on file at Long Island Historical Society

Features (exterior)	Materials
Facade <u>Unknown</u>	<u>Unknown</u>
Foundations _____	
Trim _____	
Roof Type: <input type="checkbox"/> flat <input type="checkbox"/> gable <input type="checkbox"/> shed <input type="checkbox"/> "French" <input type="checkbox"/> gambrel	
<input type="checkbox"/> hip <input type="checkbox"/> other	
Chimney(s) _____	
Porch(es) _____	
Addition(s) _____	
Dimensions & Plan <u>Unknown</u> (Sketch):	
Structural System:	
<input type="checkbox"/> wood frame, interlocking joints <input type="checkbox"/> wood frame, light member	
<input type="checkbox"/> masonry load bearing walls <input type="checkbox"/> log <input type="checkbox"/> metal <input type="checkbox"/> other	

5. DESCRIPTION (cont.)

Number of Stories Unknown

Other notable features: _____

Condition: EXTERIOR Excellent Good Fair Deteriorated X Ruins
 INTERIOR Excellent Good Fair Deteriorated Ruins

Integrity: a. X Original Site b. Moved If so, when and from where _____

c. Major alterations and dates (if known): _____

Site:

Frontage: _____

Acreage: _____

Depth: _____

Related Outbuildings and Property: None Known

barn carriage house garage(s) shop shed gardens orchards

fencing (type) walling (type) other

Threats and/or intrusions to Building:

none known zoning roads X development deterioration other

6. INTERRELATIONSHIP OF BUILDING AND SURROUNDINGS

Relationship to Street: Pivotal Positive X Neutral Negative

Relationship to Village: Pivotal Positive Neutral Negative

7. SIGNIFICANCE

Date of Initial Construction:

c.1840 c.1850 c.1860 c.1870 c.1880 c.1890 c.1900
c.1910 after 1910 Specific Date (if known) _____

Style: Frontier Italianate Neo-Classical Revival Art Deco
Classic Revival Romantic Revival English Eclectic Ranch Style
Gothic Revival Queen Anne Federal Revival Split-Level
Tuscan Villa Eastlake Bungalow Utilitarian
Second Empire Georgian Revival Western Stick Style Other

National Register Status:

Presently on National Register or nominated for:

national significance state significance local significance X none

COMMENTS: (expand on next page)

A house was built in 1772 by John Eldert just north of Mill Island. Photographs on file at Long Island Historical Society indicate the house was extant in 1895.

Recorder: DGR

Date of Inventory 7/77

Photographer: _____

Date of Exposure _____

ARCHEOLOGICAL SITE INVENTORY FORM

DIVISION FOR HISTORIC PRESERVATION
NEW YORK STATE PARKS AND RECREATION
ALBANY, NEW YORK

518 474-0479

FOR OFFICE USE ONLY

UNIQUE SITE NO. A047-01-0120
QUAD. Coney Island
SERIES U.S.G.S 7 1/2'
NEG. NO. _____

REPORTED BY: John Milner Associates

YOUR ADDRESS: West Chester, Pennsylvania TELEPHONE: _____

ORGANIZATION (if any): NPS Contract CX-2000-7-0010

DATE: 2/10/78

1. SITE NAME: JB-73 Schenck - Crooke House & Mill Site

2. COUNTY: Kings TOWN/CITY: _____ VILLAGE: _____

3. LOCATION: On former Mill Island, now land between Mill Basin & East Mill Basin, Jamaica Bay

4. PRESENT OWNER: _____

5. OWNER'S ADDRESS: _____

6. DESCRIPTION, CONDITION, EVIDENCE OF SITE: See Attached Form

☐ STANDING RUINS

☐ CELLAR HOLE WITH WALLS

☐ SURFACE TRACES VISIBLE

☐ WALLS WITHOUT CELLAR HOLE

☐ UNDER CULTIVATION

☐ EROSION

☐ UNDERWATER

☐ NO VISIBLE EVIDENCE

☐ OTHER _____

7. COLLECTION OF MATERIAL FROM SITE:

☐ SURFACE HUNTING BY WHOM _____ DATE _____

☐ TESTING BY WHOM _____ DATE _____

☐ EXCAVATION BY WHOM _____ DATE _____

☐ NONE

PRESENT REPOSITORY OF MATERIALS: _____

8. PREHISTORIC CULTURAL AFFILIATION OR DATE: _____



Historic Site Survey Record
Coney Island U.S.G.S. 7.5' Quadrangle (1966)

View:

UTM Grid ⁴⁴96,160m.N.

Camera Facing:

⁵92,810m.E.

1. NAME Historic <u>JB-73</u> Common <u>Schenck-Crooke House and Mill</u>	Note: Not specifically w/i legislated boundaries of gateway. Due to the extreme nature of 20th century disturbance in this area, this location should not be taken to be precise.
2. LOCATION Street & No. <u>Jamaica Bay</u>	Zoning: _____ Map Reference Key: _____

3. CLASSIFICATION												
<table border="1"><tr><th>CATEGORY (Check One)</th><th>OWNERSHIP</th><th>STATUS</th><th>ACCESSIBLE TO PUBLIC</th></tr><tr><td><input type="checkbox"/> District <input checked="" type="checkbox"/> Site <input type="checkbox"/> Object</td><td><input checked="" type="checkbox"/> Public <input type="checkbox"/> Private <input type="checkbox"/> Both</td><td>Public Acquisition: <input type="checkbox"/> In Process <input type="checkbox"/> Being Considered</td><td><input type="checkbox"/> Occupied <input checked="" type="checkbox"/> Unoccupied <input type="checkbox"/> Work in Progress <input type="checkbox"/> Pres. <input type="checkbox"/> Altera.</td></tr><tr><td><input type="checkbox"/> Building <input type="checkbox"/> Structure</td><td></td><td></td><td>Yes: <input checked="" type="checkbox"/> Restricted <input type="checkbox"/> Unrestricted <input type="checkbox"/> No</td></tr></table>	CATEGORY (Check One)	OWNERSHIP	STATUS	ACCESSIBLE TO PUBLIC	<input type="checkbox"/> District <input checked="" type="checkbox"/> Site <input type="checkbox"/> Object	<input checked="" type="checkbox"/> Public <input type="checkbox"/> Private <input type="checkbox"/> Both	Public Acquisition: <input type="checkbox"/> In Process <input type="checkbox"/> Being Considered	<input type="checkbox"/> Occupied <input checked="" type="checkbox"/> Unoccupied <input type="checkbox"/> Work in Progress <input type="checkbox"/> Pres. <input type="checkbox"/> Altera.	<input type="checkbox"/> Building <input type="checkbox"/> Structure			Yes: <input checked="" type="checkbox"/> Restricted <input type="checkbox"/> Unrestricted <input type="checkbox"/> No
CATEGORY (Check One)	OWNERSHIP	STATUS	ACCESSIBLE TO PUBLIC									
<input type="checkbox"/> District <input checked="" type="checkbox"/> Site <input type="checkbox"/> Object	<input checked="" type="checkbox"/> Public <input type="checkbox"/> Private <input type="checkbox"/> Both	Public Acquisition: <input type="checkbox"/> In Process <input type="checkbox"/> Being Considered	<input type="checkbox"/> Occupied <input checked="" type="checkbox"/> Unoccupied <input type="checkbox"/> Work in Progress <input type="checkbox"/> Pres. <input type="checkbox"/> Altera.									
<input type="checkbox"/> Building <input type="checkbox"/> Structure			Yes: <input checked="" type="checkbox"/> Restricted <input type="checkbox"/> Unrestricted <input type="checkbox"/> No									

PRESENT USE (Check One or More if Applicable)

<input type="checkbox"/> Agriculture <input type="checkbox"/> Commercial <input type="checkbox"/> Educational	<input checked="" type="checkbox"/> Government <input type="checkbox"/> Industrial <input type="checkbox"/> Military	<input type="checkbox"/> Museum <input checked="" type="checkbox"/> Park <input type="checkbox"/> Private Residence (Owner Occupied)	<input type="checkbox"/> Religious <input type="checkbox"/> Rental Residence <input type="checkbox"/> Single Family <input type="checkbox"/> Double <input type="checkbox"/> Multiple	<input type="checkbox"/> Scientific <input type="checkbox"/> Transportation <input type="checkbox"/> Other
---	--	---	---	--

ORIGINAL USE: Oldest known residential structure in Kings County.

4a. OWNERSHIP (Present) Name: <u>National Park Service</u>	4b. OWNERSHIP (Original, if known): <u>Jan Martense Schenck</u>
Street and Number: _____	4c. BUILDER/ARCHITECT (if known): _____
City or Town: _____	

5. DESCRIPTION Photographs and drawings on file at Long Island Historical Society.	
Features (exterior)	Materials
Facade <u>Unknown</u>	<u>Unknown</u>
Foundations _____	
Trim _____	
Roof Type: <input type="checkbox"/> flat <input type="checkbox"/> gable <input type="checkbox"/> shed <input type="checkbox"/> "French" <input type="checkbox"/> gambrel <input type="checkbox"/> hip <input type="checkbox"/> other	
Chimney(s) _____	
Porch(es) _____	
Addition(s) _____	
Dimensions & Plan <u>Unknown</u> (Sketch):	
Structural System:	
<input type="checkbox"/> wood frame, interlocking joints <input type="checkbox"/> wood frame, light member	
<input type="checkbox"/> masonry load bearing walls <input type="checkbox"/> log <input type="checkbox"/> metal <input type="checkbox"/> other	

5. DESCRIPTION (cont.)

Number of Stories Unknown

Other notable features: _____

Condition: EXTERIOR Excellent Good Fair Deteriorated Ruins
 INTERIOR Excellent Good Fair Deteriorated Ruins

Integrity: a. Original Site b. Moved If so, when and from where moved to site
near Brooklyn Museum after 1940

c. Major alterations and dates (if known): _____

Site:

Frontage: _____

Acreage: _____

Depth: _____

Related Outbuildings and Property:

_____ barn _____ carriage house _____ garage(s) _____ shop _____ shed _____ gardens _____ orchards

_____ fencing (type) _____ walling (type) _____ other _____

Threats and/or intrusions to Building:

_____ none known _____ zoning _____ roads X development _____ deterioration _____ other _____

6. INTERRELATIONSHIP OF BUILDING AND SURROUNDINGS

Relationship to Street: _____ Pivotal _____ Positive X Neutral _____ NegativeRelationship to Village: _____ Pivotal _____ Positive _____ Neutral _____ Negative

7. SIGNIFICANCE

Date of Initial Construction:

_____ c.1840 _____ c.1850 _____ c.1860 _____ c.1870 _____ c.1880 _____ c.1890 _____ c.1900
_____ c.1910 _____ after 1910 Specific Date (if known) 1659 or Earlier

Style: _____ Frontier _____ Italianate _____ Neo-Classical Revival _____ Art Deco
_____ Classic Revival _____ Romanesque Revival _____ English Eclectic _____ Ranch Style
_____ Gothic Revival _____ Queen Anne _____ Federal Revival _____ Split-Level
_____ Tuscan Villa _____ Eastlake _____ Bungalow _____ Utilitarian
_____ Second Empire _____ Georgian Revival _____ Western Stick Style _____ Other

National Register Status:

Presently on National Register or nominated for:

_____ national significance _____ state significance _____ local significance X none

COMMENTS: (expand on next page)

House and attendant mill built by Jan Martense Schenck on Crooke's Island (Late known as Mill Island). House and mill still extant in 1940, soon thereafter removed to site near the Brooklyn Museum.

Recorder: DGRDate of Inventory: 7/77

Photographer: _____

Date of Exposure: _____

APPENDIX B

Soil Borings Data

APPENDIX E - BORING LOGS

Borings at the Paerdegat Pumping Station
Ralph and Flatlands Avenues (Sheet 0369)

City of New York, Department of Public Works, Division of
Engineering Services, Subsurface Exploration Section
October 18, 1960 (See attached map for location)

Abbreviations: tr.=trace, med.=medium, org.=organic, grav.=gravel,
veg.=vegetation

1 water at +1.3'	2 water at +1.7'
Cinders +11' to 10'	Cinders +11' to 10'
Prob. fill, silt, some med. to fine sand, tr. grav., tr. veg. 10' to 0.	Misc. fill, brown med. to fine sand, brick, little grav., tr. silt 10' to 0.
Black org. silt, some med. to fine sand, tr. veg. 0 to -2'	Soft peat and org. silt. 0 to -1'
Compact med. to fine light - brown sand, little grav., tr veg. -2' to -6'	Compact coarse to fine gray- brown sand and grav., tr. of silt and black org. silt. -1' to -4.0'
Compact med. to fine light brown sand tr. of coarse sand and grav., tr. silt. -6 to - 21'	Compact coarse to fine brown sand and grav., tr silt. -4' to -9'.

APPENDIX B

Borings for Combined Relief Sewers in Avenue K, Bet. Flatlands & Ralph Aves., Ralph Ave. Bet. Avenue M & Bergen Ave. (Sheet 0584)

City of New York, Department of Public Works, Division of Engineering Services, Subsurface Exploration Section
February 26, 1968 (See attached map for location)

Abbreviations: conc=concrete, cind=cinders, br=brown
c-f=coarse to fine

B12 water -0.1'	B7 water -0.5'	B8 water -4.1'	B9 water -4.0'	B10 water -0.6'
Fill, sand silt, grav asphalt conc. +12.4' to -1.6'	Conc; Fill, sand, silt, grav, brick wood. +11.7' to -2.3'	Fill, sand silt, grav asphalt +11' to -4'	Fill, cind plaster, etc. +11.6' to - 3.4'	Fill sand grav, silt steel, asphalt +11.2 to -3.8'
Compact med.-f gray sand, some silt, tr clay, tr peat to -7.6'	Peat to -6.3'	Peat to -6'	Peat to -5.4'	V. soft gray org. silt, some clay, some fine sand to -5.8'
Loose- compact c- f brown sand tr silt, tr grav. to -23.6'	Soft gray/br silt & clay tr c-f sand tr veg. to -10.3'	V. compact c-f gray sand, tr to little grav, tr silt. to -16'	Gray silt fine sand to -7.4'	Gray sand, tr. grav to -8.8'

APPENDIX B

Abbreviations: pen=penetrated

B11 water -3.5'	B13 water -4.2'	B25 water -3.5'	B26 water +0.8'	B27 water +1.9'
Fill sand, silt cind +11' to -4'	Fill sand, grav silt brick +13.3' to +0.3'	Fill brick, plaster +13' to +3'	Fill sand, silt, grav brick, plaster +11.9 to -3.1'	Fill sand, silt, brick +8.4' to -1.6'
Stiff, gray org silt some f sand, tr peat to -9'	Compact c-f br sand, tr silt, tr grav to -13.7'	Stiff dark br silt, tr c-f sand, pen. by conc fill to -1.0'	Peat to -5.1'	Peat to -4.6'
Compact c- f br sand little- some grav, tr silt to -14'	Loose c- med-f br sand, tr silt to -22.7'	Compact loose c-f brown sand, tr grav, tr silt to -23'	Compact c-f br sand, little-tr grav, tr silt to -24.1'	Compact c- med-f gray sand, tr- little grav tr silt to -11.6'

APPENDIX E

Borings for Reconstruction of Avenues L, M, N, etc., between East 68th and East 72nd Streets (Sheet 2181)

City of New York, Department of General Services, Division of Design and Construction Management, Bureau of Building Design
February 27, 1991 (See attached map for location)

C1 water +0.9' to -0.1'	C6 water +0.7' to +0.4'	C7 water 0.9' to -0.1'	C8 water +1.2' to 0
Blacktop & fill +11.7' to -8.3'	Asphalt, conc. & fill +10.9' to -7.1'	Blacktop & fill +10.9 to -4.1'	Asphalt, conc & fill +11.3' to -4.7'
F-med br sand, tr silt tr grav to -11.8'	F-med dark br sand, tr silt, tr grav to -12.1'	Br peat, some org silt to -6.6'	f-med-c br sand, tr to little silt, tr to little grav. to -7.7'

C9 water 0.0'	C11 water -0.5'	C20 water 4.0'
Asphalt, conc, fill +10.8' to -1.2'	Asphalt, conc, fill +11.6 to -6.4'	Asphalt, conc, fill +13.3' to -2.7'
Dark br peat, some org silt, tr grav to -5.2'	F-med br sand to -11.4'	F-med-c br sand, little grav, tr silt, cobbles to -8.8'
Gray/br silt, tr clay, little med-f sand, tr veg to -9.2'	F-med-c brown sand tr grav to -19.9'	F-med br sand, tr grav to -21.3'

C10	C16	C19	C21
Asphalt, fill +12.6' to -2.4'	Blacktop, conc, fill +13.4' to -0.6'	Blacktop, conc fill +10.2' to -3.8'	Asphalt, conc, fill +13.1' to -4.9'
Peat, org. silt, tr glass to -3.4'	Dark gray/brown org silt, peat, some clay, tr grav, tr metal, glass to -5.6'	F-med.-coarse brown sand, little grav, tr silt to -8.8'	F-med brown sand, tr silt, tr grav, org odor, f silty sand layers. to -18.4
Gray/brown silt f-med sand tr veg. to -5.4'	F-med brown sand tr silt, tr grav, tr veg. to -10.6'	F-med brown sand, tr grav to -21.3'	
F-med brown sand, tr silt, tr grav. to -18.9'			

17

Boring Location Map

APPENDIX A

Correspondence with the

New York State Museum

and the

New York State Office
of Parks, Recreation, and Historic Preservation

SITE FILE SEARCH RESULTS

conducted by LTB
date 5/21

Project Paerdegat Basin

Village _____ Town Brooklyn

County _____

New York State Museum

Prehistoric archeological sites 4 (list on back)

Site sensitivity requested ✓

Office of Parks, Recreation and Historic Preservation

Archeological sites 8 AK 5/19/93

Building/Structure forms

National Register listing

Previous Surveys

Key To USGS Map Indicating Inventoried Cultural Resources

From the New York State Museum there are four prehistoric archaeological sites were reported by Arthur C. Parker. Their approximate locations are indicated by the numbers 7390, 7391, 3610, and 3608.

The Office of Parks, Recreation and Historic Preservation has eight sites in its files which are indicated by numbers 1 - 8 on the map. Copies of the site inventory forms - in that sequence - follow the map.

Brooklyn Quad (USGS 1967)

- #1. A047-01-0125 Kings Bayview House, Canarsie Pier, Jamaica Bay
- #2. A047-01-0118 Schenck House site near Jamaica Bay
- #3. A047-01-0113 Canarsie site
- #4. A047-01-0023 Wyckoff House in Flatbush

Coney Island N.Y. Quad (USGS 1066)

- #5. A047-01-0123 Van Wicklen Cottage near Jamaica Bay
- #6. A047-01-0119 Bergen House near Jamaica Bay
- #7. A047-01-0121 John Eldert House site near Jamaica Bay
- #8. A047-01-0120 Schenck-Crooke House site near Jamaica Bay



New York State Museum sites:

NYSM#	other#	Name	time per.	type	source of data	project	quad
3608	ACP Camp 4		unfilled	shell mounds	Bluffs on Ave U near Ryder Pt + Sheph Br	cycle shell pottery 12 T 5 N 1	
3610	ACP Camp no #		gr	camp	numerous keeps at		
7396	ACP Camp 3A			shell keeps	Canansie or Flatlands		
7391	ACP Camp 3B			shell keeps	numerous keeps at ... Bergen Co		

Office of Parks, Recreation and Historic Preservation

Archeological Sites:

Building/Structure Forms:

National Register Listings:

	listed	
	listed	

Previous Surveys:

ARCHEOLOGICAL SITE INVENTORY FORM

DIVISION FOR HISTORIC PRESERVATION
NEW YORK STATE PARKS AND RECREATION
ALBANY, NEW YORK

518 474-0479

FOR OFFICE USE ONLY

UNIQUE SITE NO. A047-01-0125
QUAD. Brooklyn
SERIES U.S.G.S. 7 1/2'
NEG. NO. _____

REPORTED BY: John Milner Associates

YOUR ADDRESS: West Chester, Pennsylvania TELEPHONE: _____

ORGANIZATION (if any): NPS Contract CX-2000-7-0010

DATE: 2/10/78

1. SITE NAME: JB-78 King's Bayview House Site

2. COUNTY: Kings TOWN/CITY: _____ VILLAGE: _____

3. LOCATION: vicinity of Canarsie Pier, Jamaica Bay

4. PRESENT OWNER: _____

5. OWNER'S ADDRESS: _____

6. DESCRIPTION, CONDITION, EVIDENCE OF SITE: See attached form

- | | |
|---|--|
| <input type="checkbox"/> STANDING RUINS | <input type="checkbox"/> CELLAR HOLE WITH WALLS |
| <input type="checkbox"/> SURFACE TRACES VISIBLE | <input type="checkbox"/> WALLS WITHOUT CELLAR HOLE |
| <input type="checkbox"/> UNDER CULTIVATION | <input type="checkbox"/> EROSION |
| | <input type="checkbox"/> UNDERWATER |
| <input type="checkbox"/> NO VISIBLE EVIDENCE | <input type="checkbox"/> OTHER _____ |

7. COLLECTION OF MATERIAL FROM SITE:

- | | | |
|--|---------------|------------|
| <input type="checkbox"/> SURFACE HUNTING | BY WHOM _____ | DATE _____ |
| <input type="checkbox"/> TESTING | BY WHOM _____ | DATE _____ |
| <input type="checkbox"/> EXCAVATION | BY WHOM _____ | DATE _____ |
| <input type="checkbox"/> NONE | | |

PRESENT REPOSITORY OF MATERIALS: _____

8. PREHISTORIC CULTURAL AFFILIATION OR DATE: _____



NATIONAL HERITAGE

Historic Site Survey Record

Brooklyn ~~Goney Island~~ U.S.G.S. 7.5' Quadrangle (1966)

View:

UTM Grid ⁴⁴97,350m.N.

Camera Facing:

⁵93,500m.E.

1. NAME
Historic JB-78
Common King's Bayview House

2. LOCATION Canarsie Pier
Street & No. Jamaica Bay

Note: Due to the extreme nature of 20th century disturbance in this area, this location should not be taken to be precise.

Zoning: _____ Map Reference Key # _____

3. CLASSIFICATION

CATEGORY (Check One)	OWNERSHIP	STATUS	ACCESSIBLE TO PUBLIC
<u>District</u> <u>Building</u> <u>X Site</u> <u>Structure</u> <u>Object</u>	<u>X Public</u> <u>Private</u> <u>Both</u> Public Acquisition: <u>In Process</u> <u>Being Considered</u>	<u>Occupied</u> <u>X Unoccupied</u> <u>Work in Progress</u> <u>Pres.</u> <u>Alter.</u>	Yes: <u>X Restricted</u> <u>Unrestricted</u> <u>No</u>

PRESENT USE (Check One or More if Applicable)

Agriculture X Government Museum Religious Scientific
Commercial Industrial X Park Rental Residence Transportation
Educational Military Private Residence Single Family Other
(Owner Occupied) Double
Multiple

ORIGINAL USE: Residential Structure

4a. OWNERSHIP (Present) National Park Service
Name: _____
Street and Number: _____
City or Town: _____

4b. OWNERSHIP (Original, if known): _____

4c. BUILDER/ARCHITECT (if known): _____

5. DESCRIPTION Drawing on file at Long Island Historical Society

Features (exterior)	Materials
Facade <u>Unknown</u>	<u>Unknown</u>
Foundations _____	_____
Trim _____	_____
Roof Type: <u>flat</u> <u>gable</u> <u>shed</u> <u>"French"</u> <u>gambrel</u> <u>hip</u> <u>other</u>	_____
Chimney(s) _____	_____
Porch(es) _____	_____
Addition(s) _____	_____
Dimensions & Plan <u>Unknown</u> (Sketch):	_____
Structural System: <u>wood frame, interlocking joints</u> <u>wood frame, light member</u> <u>masonry load bearing walls</u> <u>log</u> <u>metal</u> <u>other</u>	_____

5. DESCRIPTION (cont.)

Number of Stories Unknown

Other notable features: _____

Condition: EXTERIOR Excellent Good Fair Deteriorated ☒ Ruins
 INTERIOR Excellent Good Fair Deteriorated Ruins

Integrity: a. ☒ Original Site b. Moved If so, when and from where _____

c. Major alterations and dates (if known): _____

Site:

Frontage:

Acreage:

Depth:

Related Outbuildings and Property: None Knownbarn carriage house garage(s) shop shed gardens orchardsfencing (type) walling (type) other

Threats and/or Intrusions to Building:

none known zoning roads ☒ development deterioration other

6. INTERRELATIONSHIP OF BUILDING AND SURROUNDINGS

Relationship to Street: Pivotal Positive ☒ Neutral NegativeRelationship to Village: Pivotal Positive Neutral Negative

7. SIGNIFICANCE

Date of Initial Construction:

c.1840 c.1850 c.1860 c.1870 c.1880 c.1890 c.1900
c.1910 after 1910 Specific Date (if known) 18th century

Style: Frontier Italianate Neo-Classical Revival Art Deco
Classic Revival Romantic Revival English Eclectic Ranch Style
Gothic Revival Queen Anne Federal Revival Split-Level
Tuscan Villa Eastlake Bungalow Utilitarian
Second Empire Georgian Revival Western Stick Style Other

National Register Status:

Presently on National Register or nominated for:

national significance state significance local significance ☒ none

COMMENTS: (expand on next page)

King's Bayview house was probably erected sometime in the 18th century.
 No further information available.

Recorder: DGRDate of Inventory: 7/77

Photographer: _____

Date of Exposure: _____

ARCHEOLOGICAL SITE INVENTORY FORM

DIVISION FOR HISTORIC PRESERVATION
NEW YORK STATE PARKS AND RECREATION
ALBANY, NEW YORK

518 474-0479

FOR OFFICE USE ONLY

UNIQUE SITE NO. A047-01-0118
QUAD. Brooklyn
SERIES L.S.G.S. 7 1/2'
NEG. NO. _____

REPORTED BY: John Milner Associates

YOUR ADDRESS: West Chester, Pennsylvania TELEPHONE: _____

ORGANIZATION (if any): NPS Contract CX-2000-7-C010

DATE: 2/10/98

1. SITE NAME: JB-71 Schenck House Site

2. COUNTY: Kings TOWN/CITY: _____ VILLAGE: _____

3. LOCATION: End of Remsen Ave. near Canarsie Pier,
Jamaica Bay

4. PRESENT OWNER: _____

5. OWNER'S ADDRESS: _____

6. DESCRIPTION, CONDITION, EVIDENCE OF SITE: See Attached Form

- | | |
|---|--|
| <input type="checkbox"/> STANDING RUINS | <input type="checkbox"/> CELLAR HOLE WITH WALLS |
| <input type="checkbox"/> SURFACE TRACES VISIBLE | <input type="checkbox"/> WALLS WITHOUT CELLAR HOLE |
| <input type="checkbox"/> UNDER CULTIVATION | <input type="checkbox"/> EROSION <input type="checkbox"/> UNDERWATER |
| <input type="checkbox"/> NO VISIBLE EVIDENCE | <input type="checkbox"/> OTHER _____ |

7. COLLECTION OF MATERIAL FROM SITE:

- | | | |
|--|---------------|------------|
| <input type="checkbox"/> SURFACE HUNTING | BY WHOM _____ | DATE _____ |
| <input type="checkbox"/> TESTING | BY WHOM _____ | DATE _____ |
| <input type="checkbox"/> EXCAVATION | BY WHOM _____ | DATE _____ |
| <input type="checkbox"/> NONE | | |

PRESENT REPOSITORY OF MATERIALS: _____

8. PREHISTORIC CULTURAL AFFILIATION OR DATE: _____



NATIONAL HERITAGE

Brooklyn

Historic Site Survey Record
Coney Island U.S.G.S. 7.5' Quadrangle (1966)

View:

UTM Grid 44 97,350m.N.

Camera Facing:

593,500m.E.

Note: Due to the extreme nature of 20th century disturbance in this area, this location should not be taken to be precise.

1. NAME
Historic JB-71
Common Schenck House

2. LOCATION Vicinity of Canarsie Pier
Street & No. Jamaica Bay

Zoning: _____ Map Reference Key # _____

3. CLASSIFICATION

CATEGORY (Check One)	OWNERSHIP	STATUS	ACCESSIBLE TO PUBLIC
<input type="checkbox"/> District <input type="checkbox"/> Building	<input checked="" type="checkbox"/> Public	<input type="checkbox"/> Occupied	<input type="checkbox"/> Yes:
<input checked="" type="checkbox"/> Site <input type="checkbox"/> Structure	<input type="checkbox"/> Private	<input checked="" type="checkbox"/> Unoccupied	<input checked="" type="checkbox"/> Restricted
<input type="checkbox"/> Object	<input type="checkbox"/> Both	<input type="checkbox"/> Work in Progress	<input type="checkbox"/> Unrestricted
		<input type="checkbox"/> Pres. <input type="checkbox"/> Altera.	<input type="checkbox"/> No

PRESENT USE (Check One or More if Applicable)

<input type="checkbox"/> Agriculture	<input checked="" type="checkbox"/> Government	<input type="checkbox"/> Museum	<input type="checkbox"/> Religious	<input type="checkbox"/> Scientific
<input type="checkbox"/> Commercial	<input type="checkbox"/> Industrial	<input checked="" type="checkbox"/> Park	<input type="checkbox"/> Rental Residence	<input type="checkbox"/> Transportation
<input type="checkbox"/> Educational	<input type="checkbox"/> Military	<input type="checkbox"/> Private Residence (Owner Occupied)	<input type="checkbox"/> Single Family	<input type="checkbox"/> Other
		<input type="checkbox"/> Double	<input type="checkbox"/> Multiple	

ORIGINAL USE: Residential Structure

4a. OWNERSHIP (Present)
Name: National Park Service

4b. OWNERSHIP (Original, if known):
Martin Schenck

Street and Number: _____

4c. BUILDER/ARCHITECT (if known): _____

City or Town: _____

5. DESCRIPTION Photographs on file at Long Island Historical Society

Features (exterior)	Materials
Facade Unknown	Unknown
Foundations _____	_____
Trim _____	_____
Roof Type: <input type="checkbox"/> flat <input type="checkbox"/> gable <input type="checkbox"/> shed <input type="checkbox"/> "French" <input type="checkbox"/> gambrel <input type="checkbox"/> hip <input type="checkbox"/> other	_____
Chimney(s) _____	_____
Porch(es) _____	_____
Addition(s) _____	_____
Dimensions & Plan Unknown (Sketch):	_____
Structural System:	_____
<input type="checkbox"/> wood frame, interlocking joints <input type="checkbox"/> wood frame, light member	_____
<input type="checkbox"/> masonry load bearing walls <input type="checkbox"/> log <input type="checkbox"/> metal <input type="checkbox"/> other	_____

5. DESCRIPTION (cont.)

Number of Stories Unknown

Other notable features: _____

Condition: EXTERIOR ☐ Excellent ☐ Good ☐ Fair ☐ Deteriorated ☒ Ruins
 INTERIOR ☐ Excellent ☐ Good ☐ Fair ☐ Deteriorated ☐ Ruins

Integrity: a. ☒ Original Site b. ☐ Moved If so, when and from where _____

c. Major alterations and dates (if known): _____

Site:

Frontage: _____

Acreage: _____

Depth: _____

Related Outbuildings and Property: None Known

☐ barn ☐ carriage house ☐ garage(s) ☐ shop ☐ shed ☐ gardens ☐ orchards

☐ fencing (type) _____ ☐ walling (type) _____ ☐ other _____

Threats and/or Intrusions to Building:

☐ none known ☐ zoning ☐ roads ☒ development ☐ deterioration ☐ other _____

6. INTERRELATIONSHIP OF BUILDING AND SURROUNDINGS

Relationship to Street: ☐ Pivotal ☐ Positive ☒ Neutral ☐ Negative

Relationship to Village: ☐ Pivotal ☐ Positive ☐ Neutral ☐ Negative

7. SIGNIFICANCE

Date of Initial Construction:

☐ c.1840 ☐ c.1850 ☐ c.1860 ☐ c.1870 ☐ c.1880 ☐ c.1890 ☐ c.1900
☐ c.1910 ☐ after 1910 Specific Date (if known) 1664

Style: ☐ Frontier ☐ Italianate ☐ Neo-Classical Revival ☐ Art Deco
☐ Classic Revival ☐ Romanesque Revival ☐ English Eclectic ☐ Ranch Style
☐ Gothic Revival ☐ Queen Anne ☐ Federal Revival ☐ Split-Level
☐ Tuscan Villa ☐ Eastlake ☐ Bungalow ☐ Utilitarian
☐ Second Empire ☐ Georgian Revival ☐ Western Stick Style ☐ Other _____

National Register Status:

Presently on National Register or nominated for:

☐ national significance ☐ state significance ☐ local significance ☒ none

COMMENTS: (expand on next page)

House was still extant in 1936. There are five photographs on file at Long Island Historical Society. Van Wyck's map of Jamaica Bay area depicts the house and a nearby structure designated as the "Older Schenck House". Later structure owned by Martin Schenck. Built in 1664. House demolished early twentieth century.

Recorder: DGR

Date of Inventory 7777

Photographer: _____

Date of Exposure _____

ARCHEOLOGICAL SITE INVENTORY FORM

DIVISION FOR HISTORIC PRESERVATION
NEW YORK STATE PARKS AND RECREATION
ALBANY, NEW YORK

518 474-0479

FOR OFFICE USE ONLY

UNIQUE SITE NO. A047-01-0113
QUAD. Brooklyn
SERIES 7 1/2 U.S.G.S.
NEG. NO. _____

REPORTED BY: John Milner Associates

YOUR ADDRESS: West Chester, Pennsylvania TELEPHONE: _____

ORGANIZATION (if any): NPS Contract CX-2000-7-0010

DATE: 2/10/78

1. SITE NAME: Canarsie Site

2. COUNTY: Kings TOWN/CITY: _____ VILLAGE: _____

3. LOCATION: Extended back from Canarsie Beach Park as far as Avenue J, centered on E 92nd Street.

4. PRESENT OWNER: NPS

5. OWNER'S ADDRESS: _____

6. DESCRIPTION, CONDITION, EVIDENCE OF SITE: See Attached Form

- | | |
|---|--|
| <input type="checkbox"/> STANDING RUINS | <input type="checkbox"/> CELLAR HOLE WITH WALLS |
| <input type="checkbox"/> SURFACE TRACES VISIBLE | <input type="checkbox"/> WALLS WITHOUT CELLAR HOLE |
| <input type="checkbox"/> UNDER CULTIVATION | <input type="checkbox"/> EROSION <input type="checkbox"/> UNDERWATER |
| <input type="checkbox"/> NO VISIBLE EVIDENCE | <input type="checkbox"/> OTHER _____ |

7. COLLECTION OF MATERIAL FROM SITE:

- | | |
|--|--------------------------|
| <input type="checkbox"/> SURFACE HUNTING | BY WHOM _____ DATE _____ |
| <input type="checkbox"/> TESTING | BY WHOM _____ DATE _____ |
| <input type="checkbox"/> EXCAVATION | BY WHOM _____ DATE _____ |
| <input type="checkbox"/> NONE | |

PRESENT REPOSITORY OF MATERIALS: _____

8. PREHISTORIC CULTURAL AFFILIATION OR DATE: _____



Prehistoric Site Survey Record

1. DESIGNATION Number _____ Name <u>Canarsie</u>		Photo Numbers:
2. LOCATION Relation to Surroundings <u>North Shore</u> <u>Jamaica Bay</u> <u>Brooklyn Quad</u> Map Reference <u>Canarsie Coney Island</u> County <u>U.S.G.S. 7.5' Quadrangle (1966)</u> Township _____ Range _____ _____ 1/4 of _____ 1/4 of Sec. _____ _____ up from lower right printed margin _____ over from lower right printed margin		Camera Facing: UTM Grid ⁴⁴ 97,330m.N. ⁵ 94,390m.E.
3. CLASSIFICATION		
FUNCTION <input type="checkbox"/> encampment <input type="checkbox"/> mortuary <input checked="" type="checkbox"/> village <input type="checkbox"/> petroglyph <input type="checkbox"/> hunting <input type="checkbox"/> other		PHYSIOGRAPHY <input checked="" type="checkbox"/> Open <input type="checkbox"/> Other <input type="checkbox"/> Rockshelter <input type="checkbox"/> Cave
PRESENT USE (check one or more as applicable) <input type="checkbox"/> Agricultural <input type="checkbox"/> Industrial <input type="checkbox"/> Commercial <input type="checkbox"/> Military <input checked="" type="checkbox"/> Government <input checked="" type="checkbox"/> Park <input type="checkbox"/> Other		OWNERSHIP <input checked="" type="checkbox"/> Public Public Acquisition <input type="checkbox"/> Private <input type="checkbox"/> In Process <input type="checkbox"/> Both <input type="checkbox"/> Being Considered
4a. OWNERSHIP (present) Name: <u>National Park Service</u> Street & Number: _____ City or Town: _____		4b. OWNERSHIP (original, if known) Name: _____ Street & Number: _____ City or Town: _____
5. DESCRIPTION		
Dimensions: <u>unknown</u>		
Vegetation: <u>reed grasses</u>		
Elevation: <u>0 - 10 feet above sea level</u>		
Nearest Water: <u>adjacent</u>		
Surface Soil: <u>organic humus and landfill</u>		

5. DESCRIPTION (cont.)

Erosion/Deposition: probably erosion

Present Disturbance: landfilling

Impending Disturbances: none known

Structures: _____

Burials: _____

Other Features: _____

Artifacts Observed or Recovered: _____

6. SIGNIFICANCE

Tradition and Phase (if known): late prehistoric - early historic

Probable Dates of Occupation (if known): _____

National Register Status

Presently on National Register or nominated for:

☐ national significance

☐ state significance

☐ local significance

☒ none

Comments: Map on file at Long Island Historical Society (Kelly 1946)

indicates that a village named Canarsie once stood north~~east~~ of

Bergen Beach. Village may have been center of Canarsie Indians.

Bolton (1934:146) described village as being extensive.

References Cited:

Bolton, Reginald Pelham

1934 Indian Life of Long Ago in the City of New York. New York:

Harmony Books.

Kelly, James A.

1946 Map of Aboriginal Indian Villages in the Jamaica Bay Vicinity.

On File at the Long Island Historical Society.

Recorder: DGR

Date of Inventory: 7/77

Photographer: _____

Date of Exposure: _____

Type: Residential
Theme: Individuals or groups
#10

ARCHEOLOGICAL SITE INVENTORY FORM

NEW YORK STATE HISTORIC TRUST
OFFICE OF PARKS AND RECREATION
ALBANY, NEW YORK (518) 457-3753

FOR OFFICE USE ONLY

UNIQUE SITE NO. AC47-01-0023
QUAD. Brooklyn
SERIES _____
NEG. NO. _____

REPORTED BY: Bert Salwen

YOUR ADDRESS: N.Y.U. Dept of Anthro. TELEPHONE: 212-598-2815

ORGANIZATION (if any): NYAC

DATE: March 21, 1973

1. SITE NAME: Pieter Claesen Wyckoff House (17th c)

2. COUNTY: Kings TOWN/CITY: _____ VILLAGE: _____

3. LOCATION: Corner of Clarendon Road and Ralph Ave
East Flatbush, Brooklyn, N.Y.

4. PRESENT OWNER: N Y C Dept of Cultural Affairs

5. OWNER'S ADDRESS: The Arsenal, Central Park, N.Y., N.Y.

6. DESCRIPTION, CONDITION, EVIDENCE OF SITE:

- | | |
|---|---|
| <input type="checkbox"/> STANDING RUINS | <input type="checkbox"/> CELLAR HOLE WITH WALLS |
| <input type="checkbox"/> SURFACE TRACES VISIBLE | <input type="checkbox"/> WALLS WITHOUT CELLAR HOLE |
| <input type="checkbox"/> UNDER CULTIVATION | <input type="checkbox"/> EROSION <input type="checkbox"/> UNDERWATER |
| <input type="checkbox"/> NO VISIBLE EVIDENCE | <input type="checkbox"/> OTHER <u>Standing building; partially temp. stabilized</u> |

7. COLLECTION OF MATERIAL FROM SITE:

- | | | |
|---|-----------------------|-------------------|
| <input type="checkbox"/> SURFACE HUNTING | BY WHOM _____ | DATE _____ |
| <input checked="" type="checkbox"/> TESTING | BY WHOM <u>N.Y.U.</u> | DATE <u>12/72</u> |
| <input type="checkbox"/> EXCAVATION | BY WHOM _____ | DATE _____ |
| <input type="checkbox"/> NONE | | |

PRESENT REPOSITORY OF MATERIALS: N.Y.U.

8. PREHISTORIC CULTURAL AFFILIATION OR DATE: _____

ARCHEOLOGICAL SITE INVENTORY FORM

DIVISION FOR HISTORIC PRESERVATION
NEW YORK STATE PARKS AND RECREATION
ALBANY, NEW YORK

518 474-0479

FOR OFFICE USE ONLY

UNIQUE SITE NO. A047-01-0123
QUAD. Coney Island
SERIES U.S.G.S 7 1/2'
NEG. NO. _____

REPORTED BY: John Milner Associates

YOUR ADDRESS: West Chester, Pennsylvania TELEPHONE: _____

ORGANIZATION (if any): NPS Contract CX-2000-7-0010

DATE: 2/10/78

1. SITE NAME: JB-76 Van Wicklen Cottage & Mill Site

2. COUNTY: Kings TOWN/CITY: _____ VILLAGE: _____

3. LOCATION: Along Paerdegat Basin (near foot of former Crescent Street), Jamaica Bay

4. PRESENT OWNER: _____

5. OWNER'S ADDRESS: _____

6. DESCRIPTION, CONDITION, EVIDENCE OF SITE: See Attached Form

- | | |
|---|--|
| <input type="checkbox"/> STANDING RUINS | <input type="checkbox"/> CELLAR HOLE WITH WALLS |
| <input type="checkbox"/> SURFACE TRACES VISIBLE | <input type="checkbox"/> WALLS WITHOUT CELLAR HOLE |
| <input type="checkbox"/> UNDER CULTIVATION | <input type="checkbox"/> EROSION <input type="checkbox"/> UNDERWATER |
| <input type="checkbox"/> NO VISIBLE EVIDENCE | <input type="checkbox"/> OTHER _____ |

7. COLLECTION OF MATERIAL FROM SITE:

- | | | |
|--|---------------|------------|
| <input type="checkbox"/> SURFACE HUNTING | BY WHOM _____ | DATE _____ |
| <input type="checkbox"/> TESTING | BY WHOM _____ | DATE _____ |
| <input type="checkbox"/> EXCAVATION | BY WHOM _____ | DATE _____ |
| <input type="checkbox"/> NONE | | |

PRESENT REPOSITORY OF MATERIALS: _____

8. PREHISTORIC CULTURAL AFFILIATION OR DATE: _____



NATIONAL HERITAGE

Historic Site Survey Record

Coney Island U.S.G.S. 7.5' Quadrangle (1966)

UTM Grid ⁴⁴97,350m.N.

⁵93,500m.E.

View:

Camera Facing:

Note: Due to the extreme nature of 20th cen. disturbance in this area, this location should not be taken to be precise

1. NAME
Historic JB-76
Common Van Wicklen Cottage and Mill
2. LOCATION Banks of Paerdegat Basin
Street & No. Jamaica Bay

Zoning: _____ Map Reference Key # _____

3. CLASSIFICATION

CATEGORY (Check One)	OWNERSHIP	STATUS	ACCESSIBLE TO PUBLIC
<input type="checkbox"/> District <input checked="" type="checkbox"/> Site <input type="checkbox"/> Object	<input type="checkbox"/> Building <input type="checkbox"/> Structure <input checked="" type="checkbox"/> Public <input type="checkbox"/> Private <input type="checkbox"/> Both	<input type="checkbox"/> Occupied <input checked="" type="checkbox"/> Unoccupied <input type="checkbox"/> Work in Progress <input type="checkbox"/> Pres. <input type="checkbox"/> Altera.	<input type="checkbox"/> Yes: <input checked="" type="checkbox"/> Restricted <input type="checkbox"/> Unrestricted <input type="checkbox"/> No

PRESENT USE (Check One or More if Applicable)

☐ Agriculture
☐ Commercial
☐ Educational
☒ Government
☐ Industrial
☐ Military
☐ Museum
☒ Park
☐ Private Residence
 (Owner Occupied)
☐ Religious
☐ Rental Residence
☐ Single Family
☐ Double
☐ Multiple
☐ Scientific
☐ Transportation
☐ Other

ORIGINAL USE: Residential Complex

4a. OWNERSHIP (Present)

Name:

National Park Service

Street and Number:

City or Town:

4b. OWNERSHIP (Original, if known):

4c. BUILDER/ARCHITECT (if known):

5. DESCRIPTION Photographs on file at Long Island Historical Society.

Features (exterior)

Facade Unknown

Foundations

Trim

Roof Type: ☐ flat ☐ gable ☐ shed ☐ "French" ☐ gambrel
☐ hip ☐ other

Chimney(s)

Porch(es)

Addition(s)

Materials

Unknown

Dimensions & Plan Unknown (Sketch):

Structural System:

☐ wood frame, interlocking joints ☐ wood frame, light member
☐ masonry load bearing walls ☐ log ☐ metal ☐ other



NATIONAL HERITAGE

Historic Site Survey Record Coney Island U.S.G.S. 7.5' Quadrangle (1966)

View:

UTM Grid ⁴⁴96,290m.N.

Camera Facing:

⁵93,550m.E.

1. NAME
Historic JB-72
Common Bergen House

2. LOCATION Formerly on Bergen Island
Street & No. Jamaica Bay

Note: Due to the extreme nature of 20th century disturbance in this area, this location should not be taken to be precise.

Zoning: _____ Map Reference Key # _____

3. CLASSIFICATION

CATEGORY (Check One)	OWNERSHIP	STATUS	ACCESSIBLE TO PUBLIC
<input type="checkbox"/> District	<input checked="" type="checkbox"/> Public	<input type="checkbox"/> Occupied	<input type="checkbox"/> Yes:
<input checked="" type="checkbox"/> Site	<input type="checkbox"/> Private	<input checked="" type="checkbox"/> Unoccupied	<input checked="" type="checkbox"/> Restricted
<input type="checkbox"/> Object	<input type="checkbox"/> Both	<input type="checkbox"/> Work in Progress	<input type="checkbox"/> Unrestricted
		<input type="checkbox"/> Pres. <input type="checkbox"/> Altera.	<input type="checkbox"/> No

PRESENT USE (Check One or More if Applicable)

<input type="checkbox"/> Agriculture	<input checked="" type="checkbox"/> Government	<input type="checkbox"/> Museum	<input type="checkbox"/> Religious	<input type="checkbox"/> Scientific
<input type="checkbox"/> Commercial	<input type="checkbox"/> Industrial	<input checked="" type="checkbox"/> Park	<input type="checkbox"/> Rental Residence	<input type="checkbox"/> Transportation
<input type="checkbox"/> Educational	<input type="checkbox"/> Military	<input type="checkbox"/> Private Residence (Owner Occupied)	<input type="checkbox"/> Single Family	<input type="checkbox"/> Other
			<input type="checkbox"/> Double	
			<input type="checkbox"/> Multiple	

ORIGINAL USE: Residential Structure

4a. OWNERSHIP (Present) Name: <u>National Park Service</u>	4b. OWNERSHIP (Original, if known): <u>Stoothoff</u>
Street and Number: _____	4c. BUILDER/ARCHITECT (if known): _____
City or Town: _____	

5. DESCRIPTION Photographs on file at Long Island Historical Society

Features (exterior)	Materials
Facade <u>Unknown</u>	<u>Unknown</u>
Foundations _____	
Trim _____	
Roof Type: <input type="checkbox"/> flat <input type="checkbox"/> gable <input type="checkbox"/> shed <input type="checkbox"/> "French" <input type="checkbox"/> gambrel <input type="checkbox"/> hip <input type="checkbox"/> other	
Chimney(s) _____	
Porch(es) _____	
Addition(s) _____	
Dimensions & Plan <u>Unknown</u> (Sketch):	
Structural System: <input type="checkbox"/> wood frame, interlocking joints <input type="checkbox"/> wood frame, light member <input type="checkbox"/> masonry load bearing walls <input type="checkbox"/> log <input type="checkbox"/> metal <input type="checkbox"/> other	

5. DESCRIPTION (cont.)

Number of Stories Unknown

Other notable features: _____

Condition: EXTERIOR Excellent Good Fair Deteriorated X Ruins
 INTERIOR Excellent Good Fair Deteriorated Ruins

Integrity: a. X Original Site b. Moved If so, when and from where _____

c. Major alterations and dates (if known): _____

Site:

Frontage: _____

Acreage: _____

Depth: _____

Related Outbuildings and Property:

 barn carriage house garage(s) shop shed gardens orchards
 fencing (type) _____ walling (type) _____ other _____

Threats and/or intrusions to Building:

 none known zoning roads X development deterioration other _____

6. INTERRELATIONSHIP OF BUILDING AND SURROUNDINGS

Relationship to Street: Pivotal Positive X Neutral Negative
 Relationship to Village: Pivotal Positive Neutral Negative

7. SIGNIFICANCE

Date of Initial Construction:

 c.1840 c.1850 c.1860 c.1870 c.1880 c.1890 c.1900
 c.1910 after 1910 Specific Date (if known) 1763

Style: Frontier Italianate Neo-Classical Revival Art Deco
 Classic Revival Romanesque Revival English Eclectic Ranch Style
 Gothic Revival Queen Anne Federal Revival Split-Level
 Tuscan Villa Eastlake Bungalow Utilitarian
 Second Empire Georgian Revival Western Stick Style Other

National Register Status:

Presently on National Register or nominated for:

 national significance state significance local significance X none

COMMENTS: (expand on next page)

Mill erected in 1763, cottage at a later date. In 1924 the cottage was destroyed by fire, the mill was demolished in 1934.

Recorder: DGR

Date of Inventory 7/77

Photographer: _____

Date of Exposure _____

9. HISTORICAL DOCUMENTATION OF SITE:

John Milner Associates
1978 "A Cultural Resources Inventory of the Gateway National Recreation
Area, New York & New Jersey." Report prepared for the NPS.
(Copy on file at the NTS DHP.)

10. POSSIBILITY OF SITE DESTRUCTION OR DISTURBANCE:

11. REMARKS:

12. MAP LOCATION

7 1/2 MINUTE SERIES QUAD. NAME: _____

15 MINUTE SERIES QUAD. NAME: _____

U.S.G.S. COORDINATES: _____

D.O.T. COORDINATES: (if known) _____

ATTACH SKETCH, TRACING OR COPY OF MAP

See above cited report, p. 116, Fig. 7.2

SOURCE OF MAP:

13. PHOTOGRAPHS (optional)

(ATTACH)

5. DESCRIPTION (cont.)

Number of Stories Unknown

Other notable features: _____

Condition: EXTERIOR Excellent Good Fair Deteriorated X Ruins
 INTERIOR Excellent Good Fair Deteriorated Ruins

Integrity: a. X Original Site b. Moved If so, when and from where _____

c. Major alterations and dates (if known): _____

Site:

Frontage: _____

Acreage: _____

Depth: _____

Related Outbuildings and Property: None Known barn carriage house garage(s) shop shed gardens orchards fencing (type) _____ walling (type) _____ other _____

Threats and/or intrusions to Building:

 none known zoning roads X development deterioration other _____

6. INTERRELATIONSHIP OF BUILDING AND SURROUNDINGS

Relationship to Street: Pivotal Positive X Neutral NegativeRelationship to Village: Pivotal Positive Neutral Negative

7. SIGNIFICANCE

Date of Initial Construction:

 c.1840 c.1850 c.1860 c.1870 c.1880 c.1890 c.1900
 c.1910 after 1910 Specific Date (if known) _____

Style: Frontier Italianate Neo-Classical Revival Art Deco
 Classic Revival Romanesque Revival English Eclectic Ranch Style
 Gothic Revival Queen Anne Federal Revival Split-Level
 Tuscan Villa Eastlake Bungalow Utilitarian
 Second Empire Georgian Revival Western Stick Style Other

National Register Status:

Presently on National Register or nominated for:

 national significance state significance local significance X none

COMMENTS: (expand on next page)

House built sometime before the Revolutionary War, first occupied by ancestors of Olaf Stoothoff. 1791, ownership of house transferred to John Bergen. Soon after, island became known as Bergen Island. House still extant as late as 1924.

Recorder: DGRDate of Inventory 7/77

Photographer: _____

Date of Exposure _____